

THE CHEDI

PRIVATE RESIDENCES

SHEIKH ZAYED ROAD, DUBAI, UAE



DESIGNED
FOR THOSE WHO
ASPIRE TO THE
EXCEPTIONAL.

A PLACE TO BELONG.



A LEGACY OF LUXURY: THE CHEDI BRAND

For over three decades, The Chedi has been synonymous with timeless elegance, refined hospitality, and seamless integration of heritage and modernity. From the pristine shores of Oman to the cultural vibrance of Japan, The Chedi's global portfolio of award-winning destinations embodies a unique philosophy of understated luxury. Now, this esteemed legacy arrives in Dubai with The Chedi Private Residences—a landmark development offering an unprecedented lifestyle experience.

A SANCTUARY OF *REFINED ELEGANCE*

Ideally located on Sheikh Zayed Road, this groundbreaking development is the world's first standalone private branded residence under The Chedi name.

Globally celebrated for its enduring sophistication, impeccable hospitality, and culturally immersive ethos, The Chedi now brings its iconic legacy to life in Dubai, transforming contemporary urban living with a fresh perspective on luxury and exclusivity.



THE PINNACLE OF *ELEVATED LIVING*

Soaring 240 meters over 52 floors, this architectural marvel, with its sleek glass façade, is masterfully designed by the award-winning Studio Bruno Guelaff. Redefining grandeur, The Chedi Private Residences presents an exclusive collection of sky villas and world-class amenities, offering a lifestyle beyond the extraordinary.

Discover an exclusive collection of expansive residences, ranging from two- to five-bedroom villas and duplexes to the extraordinary triplex Pinnacle Mansion—a one-of-a-kind masterpiece crowning the building. Experience unparalleled luxury and design in every detail.



URBAN VIBRANCE MEETS *TRANQUILLITY*

A beacon of cosmopolitan allure, Dubai embodies ambition, innovation, and luxury, drawing entrepreneurs, businesses, and families to an unmatched experience.

The Chedi Private Residences perfectly balances this captivating energy and sophistication with the serenity of an exclusive retreat.





CRAFTED FOR THOSE WHO *SEEK A PLACE* TO BELONG

Transforming your every day, the residences transcend the expectation of urban living with world-class amenities seamlessly complementing the refined ambience.

From the elegant arrival experience to the exclusive rooftop residents' Sky Social, every space is thoughtfully crafted to foster meaningful connections while providing a serene atmosphere for personal reflection. Each area achieves a harmonious balance, seamlessly blending opportunities for social engagement with moments of tranquil solitude.





THE CHEDI
PRIVATE RESIDENCES

THE AMENITIES



The Chedi Private Residences offers an exceptional range of premium amenities across three distinct levels: Ground Social, Resort Social, and Sky Social. Each level is meticulously designed to enrich the resident experience, offering curated spaces for relaxation, entertainment, and social engagement. The Ground and Resort levels feature a blend of essential amenities and leisure spaces, while the Sky Social level offers an exclusive atmosphere with an adults-only infinity pool, Omakase Experience, Sky Bar & Lounge, ensuring a luxurious living experience at every turn.

FLOORS 6 & 7
THE RESORT SOCIAL

GROUND FLOOR
THE GROUND SOCIAL



THE GROUND SOCIAL

VALET PARKING

ARRIVAL LOBBY

LOBBY LOUNGE & RESTAURANT

CHEDI NAVIGATOR &
CONCIERGE DESK





VALET PARKING

ARRIVAL EXPERIENCE

ARRIVAL LOBBY

The Chedi Navigator and Concierge Desk is your gateway to curated experiences and personalised service. Whether you're seeking adventure, relaxation, or cultural immersion, the round-the-clock Concierge team ensures every detail is flawlessly attended to.



ARRIVAL LOBBY



ELEVATOR LOBBY



CONCIERGE



ARRIVAL LOBBY

THE RESORT SOCIAL

60M LAGOON-INSPIRED POOL

POOL DECK – CABANAS,
AQUA CABANAS, AND
PRIVATE DINING CABANAS

WELLNESS CLUB

YOUNG RESIDENTS' CLUB WITH
WET & DRY OUTDOOR
ACTIVITY AREA

OWNERS' CINEMA

HEALTH CLUB WITH GYM

SPA

SAUNAS AND PLUNGE BATHS

PRIVATE PADEL COURTS

250M JOGGING TRACK

BARBECUE AND LOUNGE GARDEN

FITNESS CENTRE

WELLNESS TERRACE





WELLNESS BAR





THE POOL



THE POOL

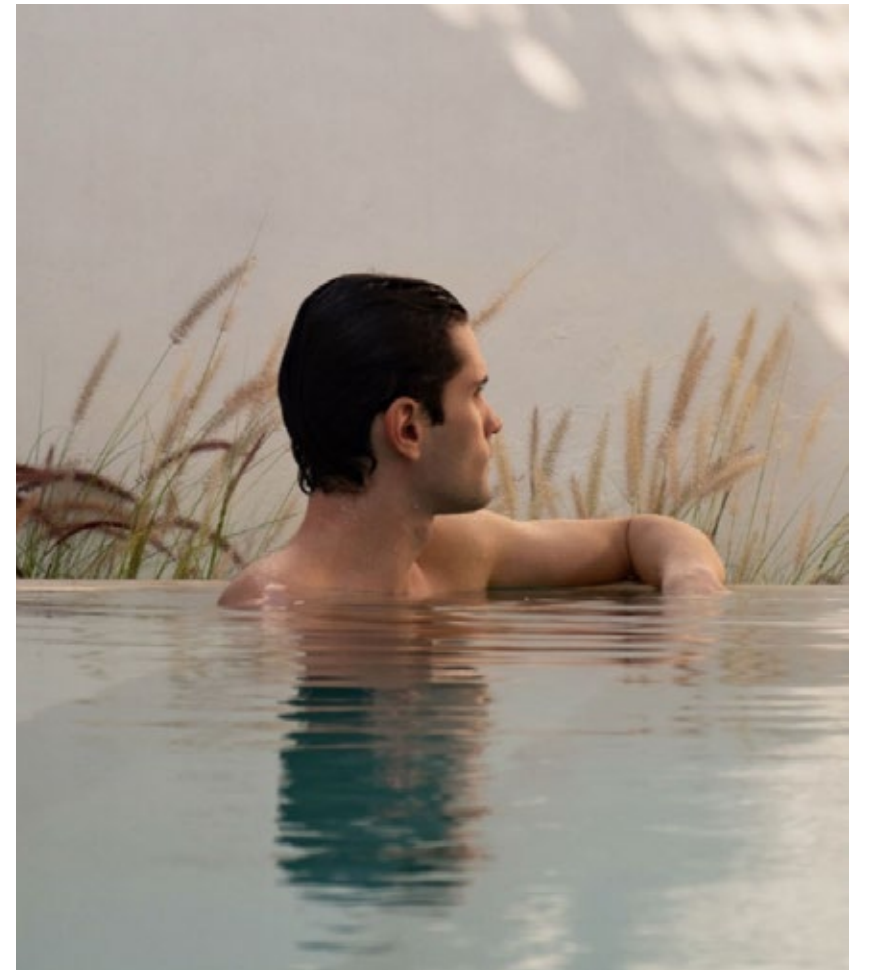
The beautifully crafted 60-meter lagoon-inspired pool offers the perfect balance of an invigorating swim and a serene escape. Surrounded by lush greenery and thoughtfully designed relaxation zones, it invites residents to unwind in style. This tranquil oasis provides an elevated setting to relax, refresh, and embrace the refined elegance of sky-rise living.



THE POOL



THE POOL





OWNERS' CINEMA

Experience the allure of our private cinema, where cutting-edge audio-visual technology meets luxurious comfort. Immerse yourself in a world of cinematic excellence, with every detail thoughtfully designed to enhance your viewing pleasure. This intimate space offers a perfect blend of elegance and style, creating an unforgettable setting for relaxation and entertainment.



OWNERS' CINEMA

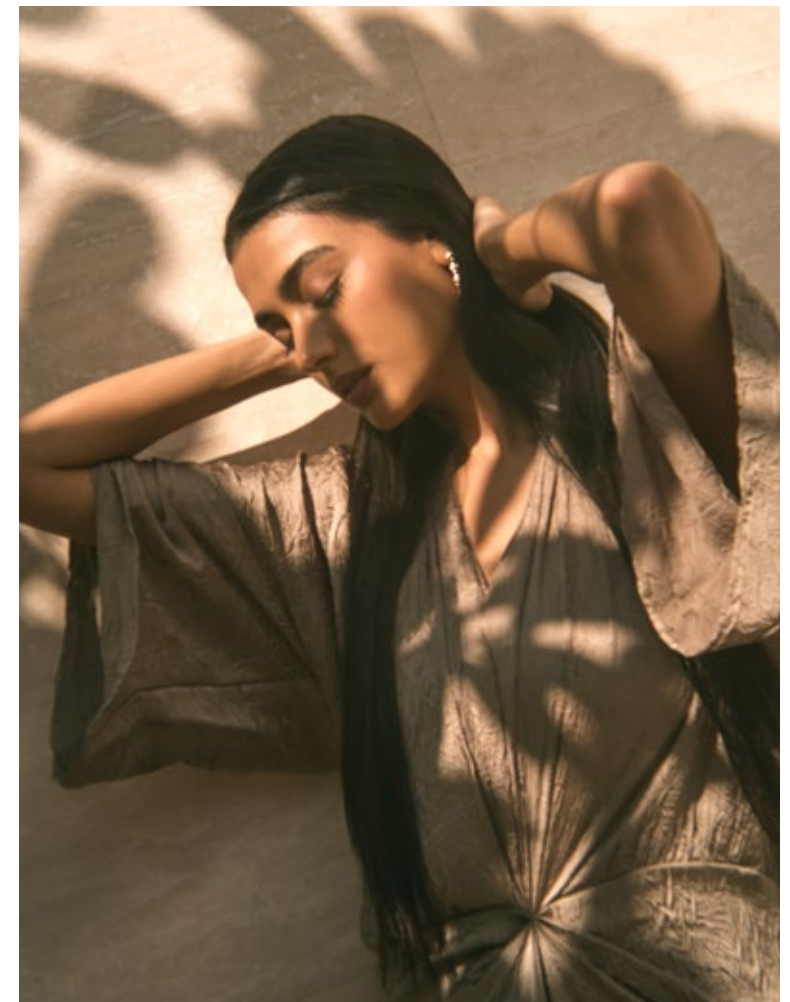




RESIDENTS' SPA

SPA WELLNESS

Step into a haven of tranquillity at the residents' spa, an exclusive sanctuary dedicated to holistic well-being. Indulge in bespoke treatments tailored to your personal journey, each one a fusion of ancient rituals and modern luxury.



CLUB WELLNESS

The residents' dedicated wellness club is a sanctuary where well-being is both body and mind. Discover private spa suites offering infrared saunas, steam showers, plunge baths, and whirlpools designed for profound relaxation and renewal. Invigorate in the state-of-the-art gym, fully equipped with the latest equipment, or seek quiet introspection in dedicated meditation rooms. A wellness concierge and tailored services ensure a seamless immersion into holistic rejuvenation.



RESIDENTS' GYM

THE SKY SOCIAL

ADULTS-ONLY INFINITY POOL & DECK

SKY SOCIAL CAFE

SKY SOCIAL LOUNGE

SUNKEN LOUNGE

SKY SOCIAL BAR

OMAKASE DINING EXPERIENCE

WALK-IN CIGAR HUMIDOR



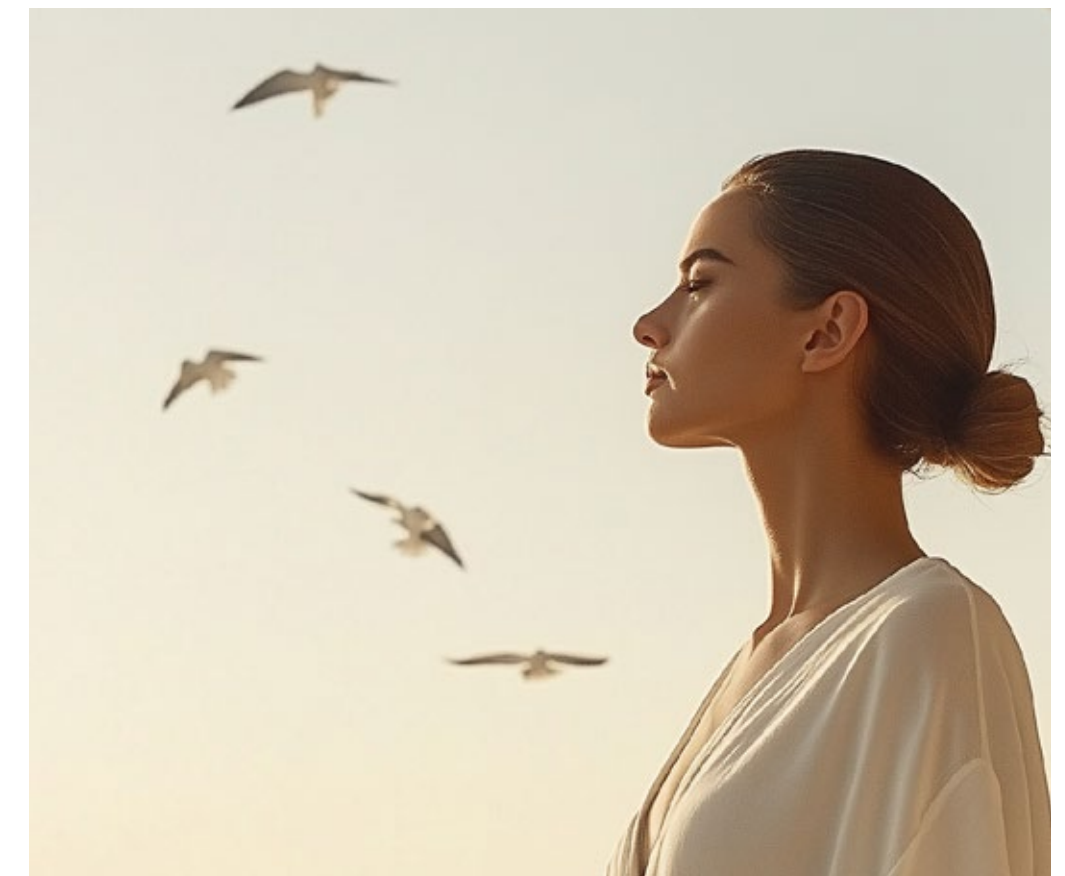
THE SKY SOCIAL BAR



SKY SOCIAL CAFE

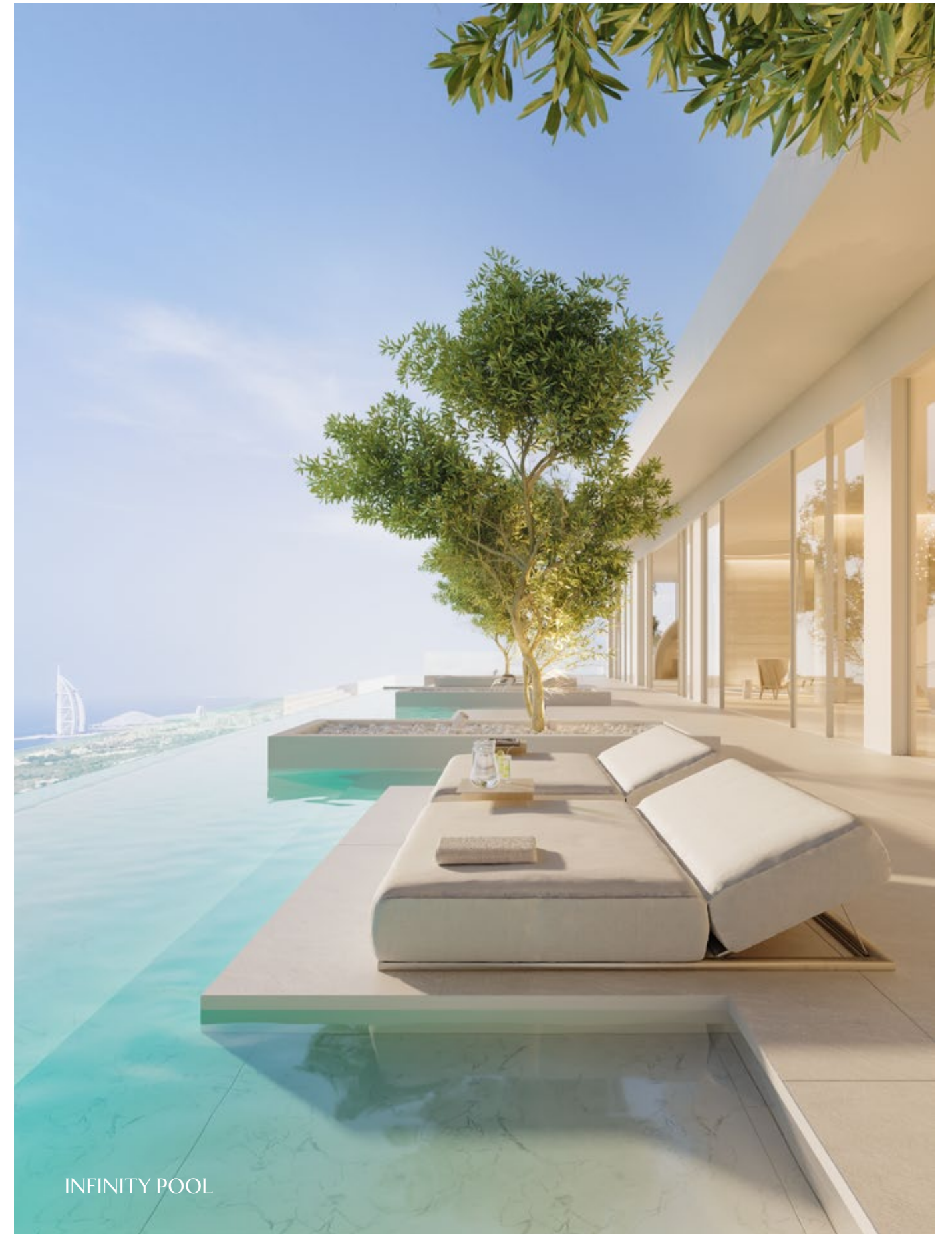
THE SKY SOCIAL

Rise beyond the extraordinary, 240 meters above the city, to an exclusive oasis reserved for residents. Here, amidst Dubai's boundless skyline, the Sky Social offers a harmonious blend of serene retreat and elevated social engagement. Immerse yourself in the adults-only infinity pool or share intimate moments in the sunken lounge with friends, against a backdrop of breathtaking panoramas.





THE SUNKEN LOUNGE



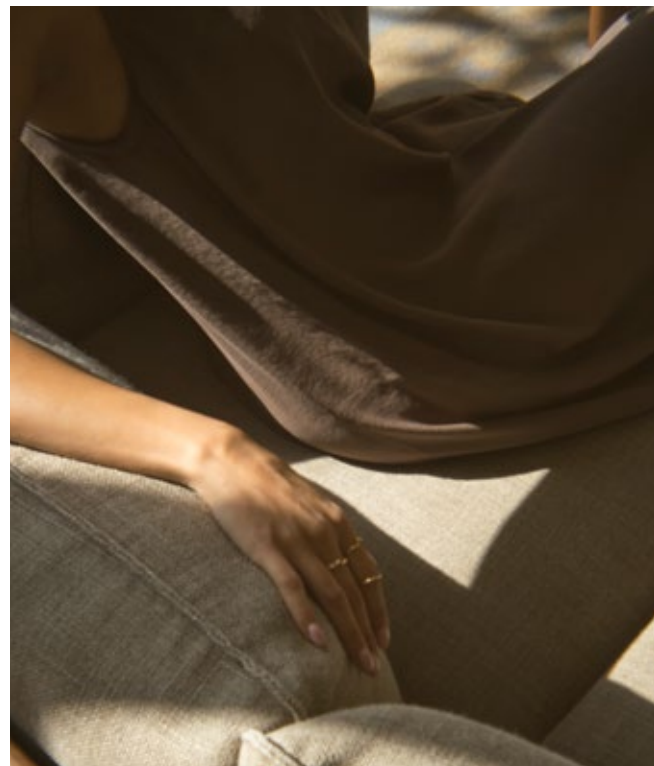
INFINITY POOL

THE RESIDENCES



DISTINCTIVE IN EVERY ASPECT

Embodying The Chedi's signature serene aesthetic, where functionality, privacy and harmony coexist effortlessly, each residence is meticulously crafted with an uncompromising commitment to quality.



FORMAL LIVING & DINING ROOM

Open-plan living and dining spaces are framed by 3.2-meter floor-to-ceiling windows. Expansive sky gardens extend 5 meters towards the horizon, offering unparalleled views of Dubai's iconic skyline for tranquil moments above the city's heartbeat.

Luxury interiors are thoughtfully curated, featuring social kitchens by pioneering Italian designer Pedini, exquisite Miele appliances, and elegant travertine floors and countertops. Bathrooms are equipped with smart mirrors and top-of-the-range Kohler and Hansgrohe fixtures, creating a spa-inspired retreat at home.

ARCHITECTURE

FLOORS 34 TO 44
SERENITY VILLAS (3 BEDROOM)

FLOORS 19 TO 30
SANCTUARY VILLAS (2 BEDROOM)
SERENITY VILLAS (3 BEDROOM)

FLOORS 8 TO 15
SANCTUARY VILLAS (2 BEDROOM)
SERENITY VILLAS (3 BEDROOM)





SANCTUARY VILLAS

2 BEDROOM

Nestled within the lower floors of this architectural marvel, the Sanctuary Villas offer an intimate retreat from urban life. These thoughtfully designed residences combine form and function to create spaces that feel both grand and welcoming. With semi-private elevator lobbies and expansive sky gardens, each home provides a serene environment where privacy and comfort coexist in perfect harmony.



LIVING ROOM



FORMAL LIVING ROOM AND SKY GARDEN



MASTER BEDROOM



WALK-IN CLOSET



MASTER BATHROOM



SERENITY VILLAS

3 BEDROOM

The Serenity Villas embody the essence of harmonious living, where every detail has been carefully considered to create an atmosphere of understated luxury. Sweeping sky gardens frame spectacular views of Palm Jumeirah, while open-plan living spaces flow seamlessly from one area to the next. These residences offer an elevated living experience where sophisticated design meets practical elegance.



FORMAL LIVING ROOM





CHEF'S KITCHEN



MASTER BATHROOM



FORMAL LIVING ROOM



MASTER BEDROOM

ARCHITECTURE

FLOORS 34 TO 44
HORIZON VILLAS (4 BEDROOM)





HORIZON VILLAS

4 BEDROOM

Experience the epitome of sky-high living in the Horizon Villas, where breathtaking views of Dubai's iconic skyline and the Emirates Golf Club create an ever-changing backdrop to daily life. These sprawling residences feature private elevator access and full-width sky gardens and terraces, offering a true villa-in-the-sky experience. Each suite has been masterfully crafted to maximise both space and sophistication, creating homes that are as impressive as they are welcoming.



LIVING ROOM



DINING ROOM



KITCHEN



MASTER BATHROOM



WALK-IN CLOSET



MASTER BEDROOM

ARCHITECTURE

FLOORS 48 & 49
SIGNATURE DUPLEX VILLAS (5 BEDROOM DUPLEX)

FLOORS 31 & 32
SIGNATURE DUPLEX VILLAS (5 BEDROOM DUPLEX)

FLOORS 16 & 17
SIGNATURE DUPLEX VILLAS (5 BEDROOM DUPLEX)





SIGNATURE DUPLEX VILLAS

5 BEDROOM DUPLEX

Six exceptional duplex residences redefine luxury living through their innovative split-level design. These magnificent homes feature private pools and gallery mezzanines that create a sense of vertical grandeur, while floor-to-ceiling windows frame 180-degree views of Dubai's mesmerising cityscape. Natural light floods through multiple levels, creating an atmosphere of boundless space and refined elegance.



FORMAL LIVING AND DINING ROOM



MASTER BEDROOM



MASTER BATHROOM



FAMILY ROOM AND PRIVATE POOL

ARCHITECTURE

FLOORS 48 & 49
THE SKY MANSION (6 BEDROOM)





LIVING ROOM

THE SKY MANSION

6 BEDROOM MANSION

Crowning the tower's upper levels, the Sky Mansion represents the apex of sophisticated living. This two-level masterpiece features expansive 360-degree terraces that seamlessly blend indoor and outdoor living. Complete with a home spa and gym, this residence offers an unparalleled living experience where luxury knows no bounds. Every detail has been meticulously crafted to create a home that stands as a testament to exceptional living.

Crowning the tower's upper levels, the Sky Mansion represents the apex of sophisticated living. This two-level masterpiece features expansive 360-degree terraces that seamlessly blend indoor and outdoor living. Complete with a home spa within the six-bedroom mansion and a private gym, this residence offers an unparalleled living experience where luxury knows no bounds. Every detail has been meticulously crafted to create a home that stands as a testament to exceptional living.



FORMAL LIVING & DINING ROOM



SKY GARDEN WITH PRIVATE POOL



MASTER BEDROOM

ARCHITECTURE

FLOORS 50, 51 & 52
THE PINNACLE MANSION (8 BEDROOM)





THE PINNACLE MANSION

8 BEDROOM PENTHOUSE

The crown jewel of The Chedi Private Residences, this magnificent three-level Mansion redefines the possibilities of luxury living. Spanning three full floors, it offers unprecedented space and privacy along with sweeping panoramic views of Dubai's skyline. Featured amenities include private wellness facilities, an infinity pool, and multiple entertainment areas, all finished with bespoke materials and furnishings that epitomize ultimate refinement. This one-of-a-kind residence represents the pinnacle of exclusive living, offering an unmatched level of sophistication and privacy for those who accept nothing less than extraordinary.



FORMAL DINING ROOM



STUDY AND LOUNGE



SKY GARDEN WITH PRIVATE POOL



MASTER BATHROOM



PRIVATE GYM



PRIVATE SPA

REWARDING *DISTINCTION*

Owners benefit from a distinguished program offering exclusive rates across The Chedi global portfolio of hotels from upgrades, extended check-in/ check-out times, invite-only events and attractive discounts on world-class dining and spa services.





EXCLUSIVE *BESPOKE* SERVICES

The Chedi Private Residences redefine bespoke living with an extensive suite of personalised services. From 24-hour concierge support and dedicated butler assistance to tailored ‘away-from-home’ packages, every detail is seamlessly taken care of. Returning home becomes an unparalleled experience—with customized pantry stocking, impeccable housekeeping, and seamless event planning at your service. Owners also enjoy exclusive privileges, including a bespoke welcome pack featuring a luxury tea set, privileged access to global Chedi properties, and curated shopping experiences with celebrity designers. Enhancing daily convenience, the resident-exclusive app offers seamless access to bookings, concierge services, and personalized assistance—ensuring effortless living at every moment.

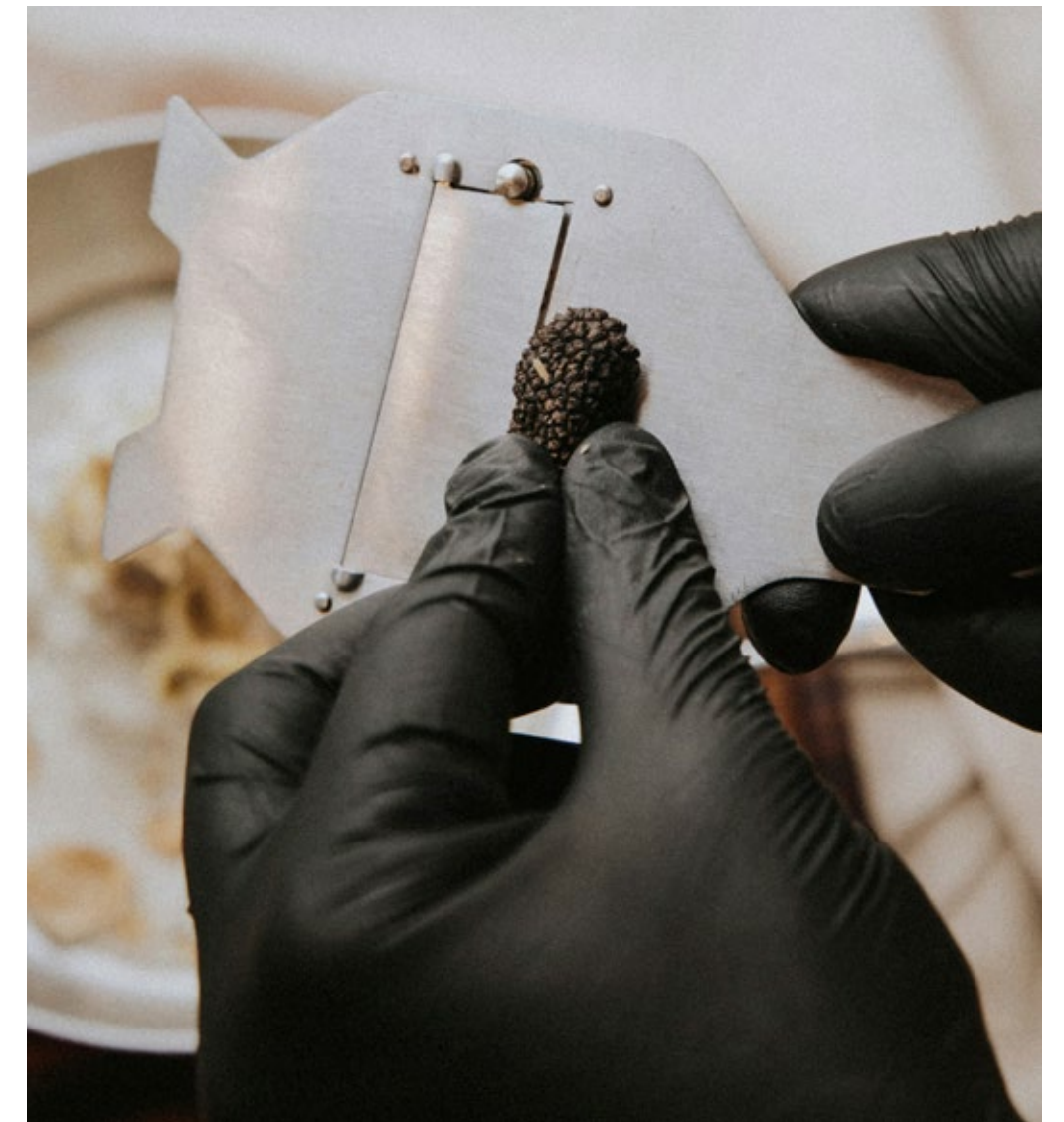


Core Services

- ‘Chedi Navigator’ Concierge Services
- Mail and Package Handling
- Doorman and Porter Assistance
- Secure Parking Facilities
- Round-the-Clock Security
- Common Area Maintenance & Housekeeping
- Wi-fi Internet Access throughout Common Areas and Public Facilities.
- General and Administrative
- Function / Event Planning
- Plant Care Maintenance
- Alteration Services

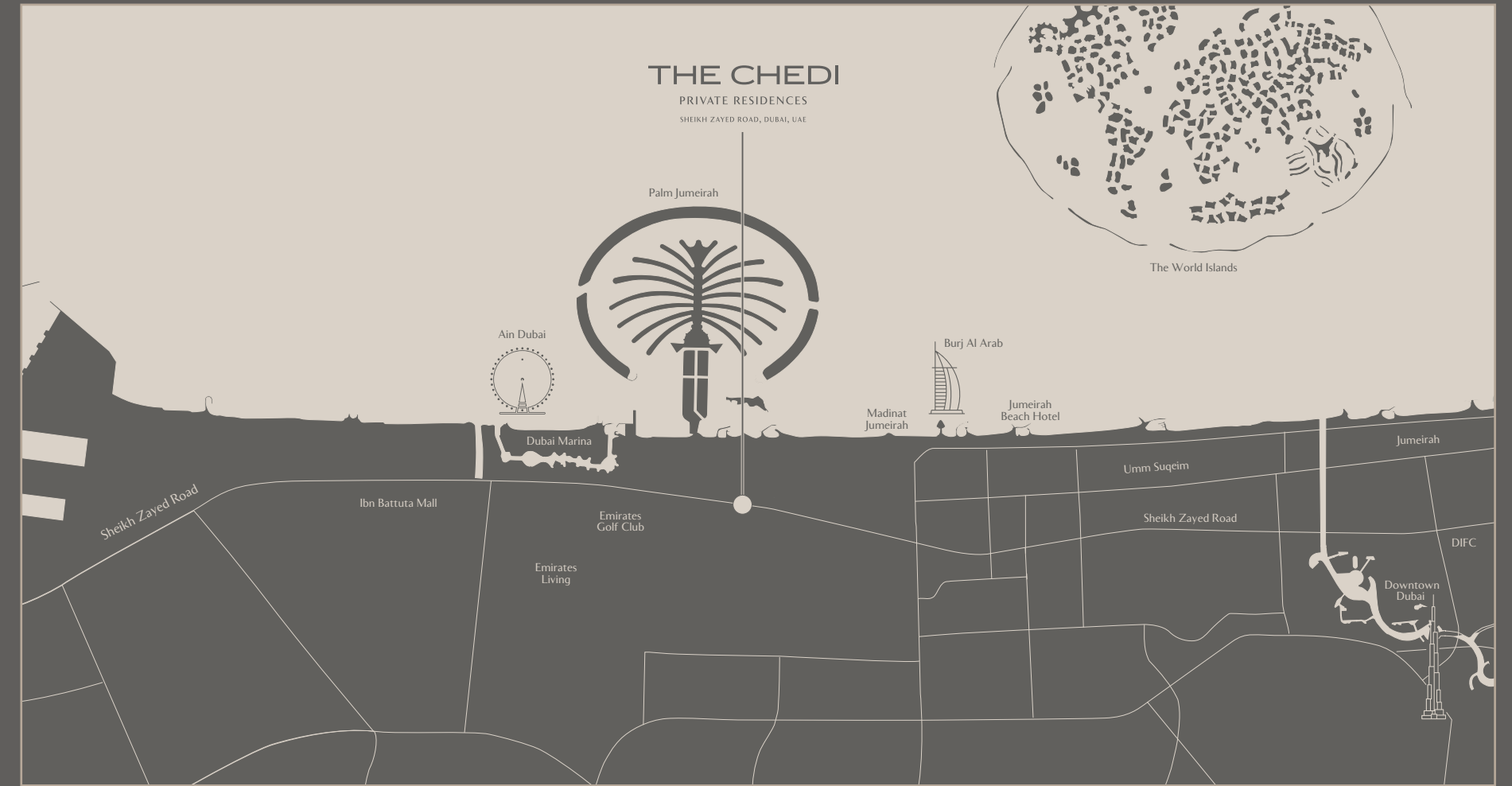
À La Carte Services

- The Chedi Personal Butler
- ‘While You’re Away and Everyday’ Service Support
- Nanny / Child Care Services
- Carwash Services
- Laundry and Dry Cleaning
- Alteration Services
- Private Transportation and Limousine Services
- In Residence Housekeeping & Maintenance
- Florist Services
- Non-routine or Specialised Repair and Maintenance
- Pet-Minding
- Private Event with Private Chef



SEAMLESS CONNECTIVITY BETWEEN URBAN LIVING AND *PRIVATE SANCTUARY*

Nestled in the heart of Dubai's dynamic landscape, yet offering a serene retreat, this prime location provides seamless access to the city's most iconic landmarks. Just minutes from world-class dining, shopping, and entertainment, it seamlessly blends convenience with indulgence for a truly elevated lifestyle.



1

Minute from
Sheikh Zayed Road

5

Minutes to
Emirates Golf Club

5

Minutes to
Beaches

6

Minutes to
Mall of the Emirates

6

Minutes to
Dubai Marina

10

Minutes to
Palm Jumeriah

10

Minutes to
Burj Al Arab

10

Minutes to Jumeirah
Beach Residence

15

Minutes to
Downtown Dubai

20

Minutes to Dubai
International Airport



A VISIONARY DEVELOPER



Al Seeb Real Estate Development is the driving force behind The Chedi Private Residences, reimagining urban luxury in the heart of Dubai. Known for delivering transformative projects, Al Seeb combines innovation and meticulous attention to detail to craft living experiences that set new benchmarks in exclusivity and sophistication.