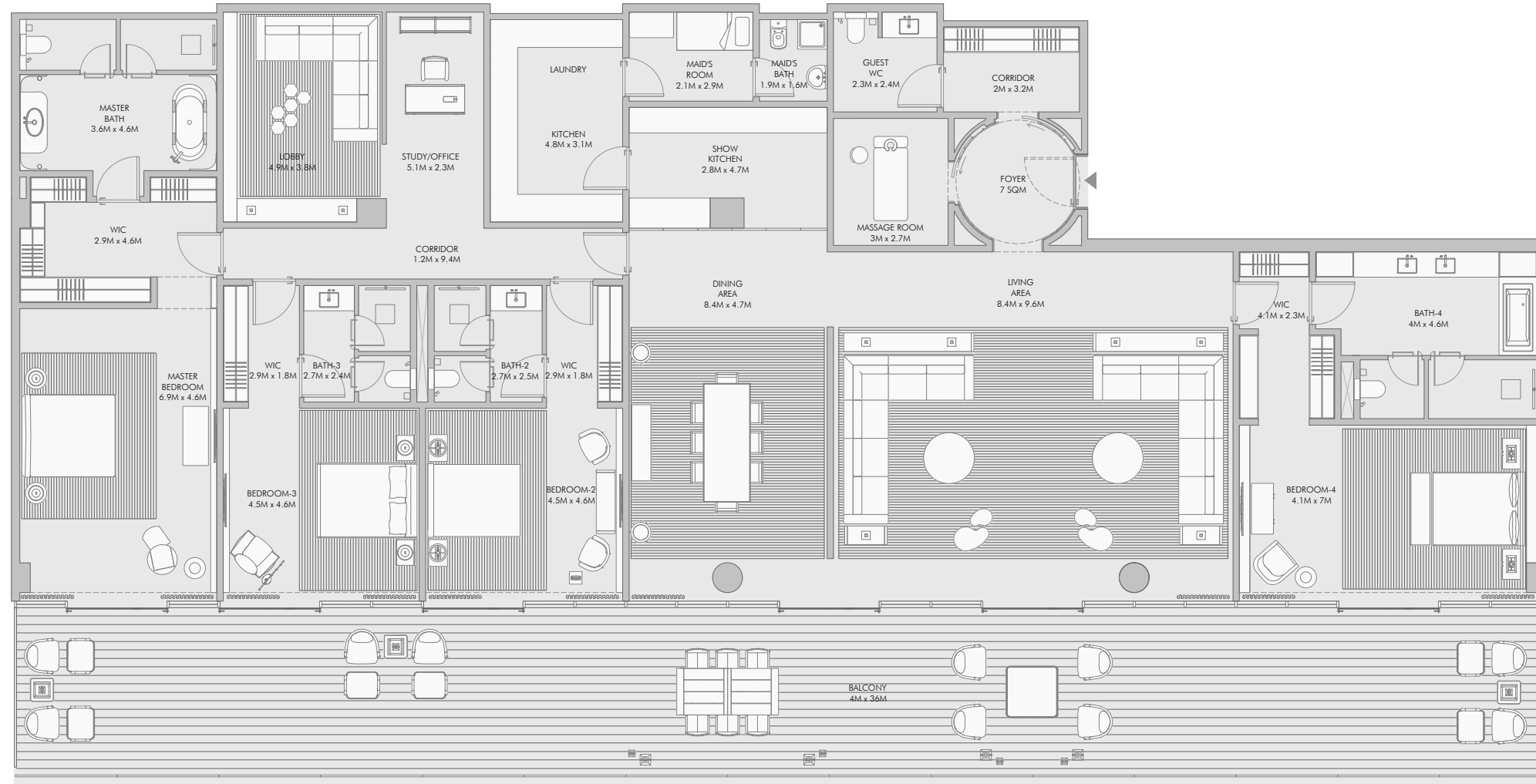
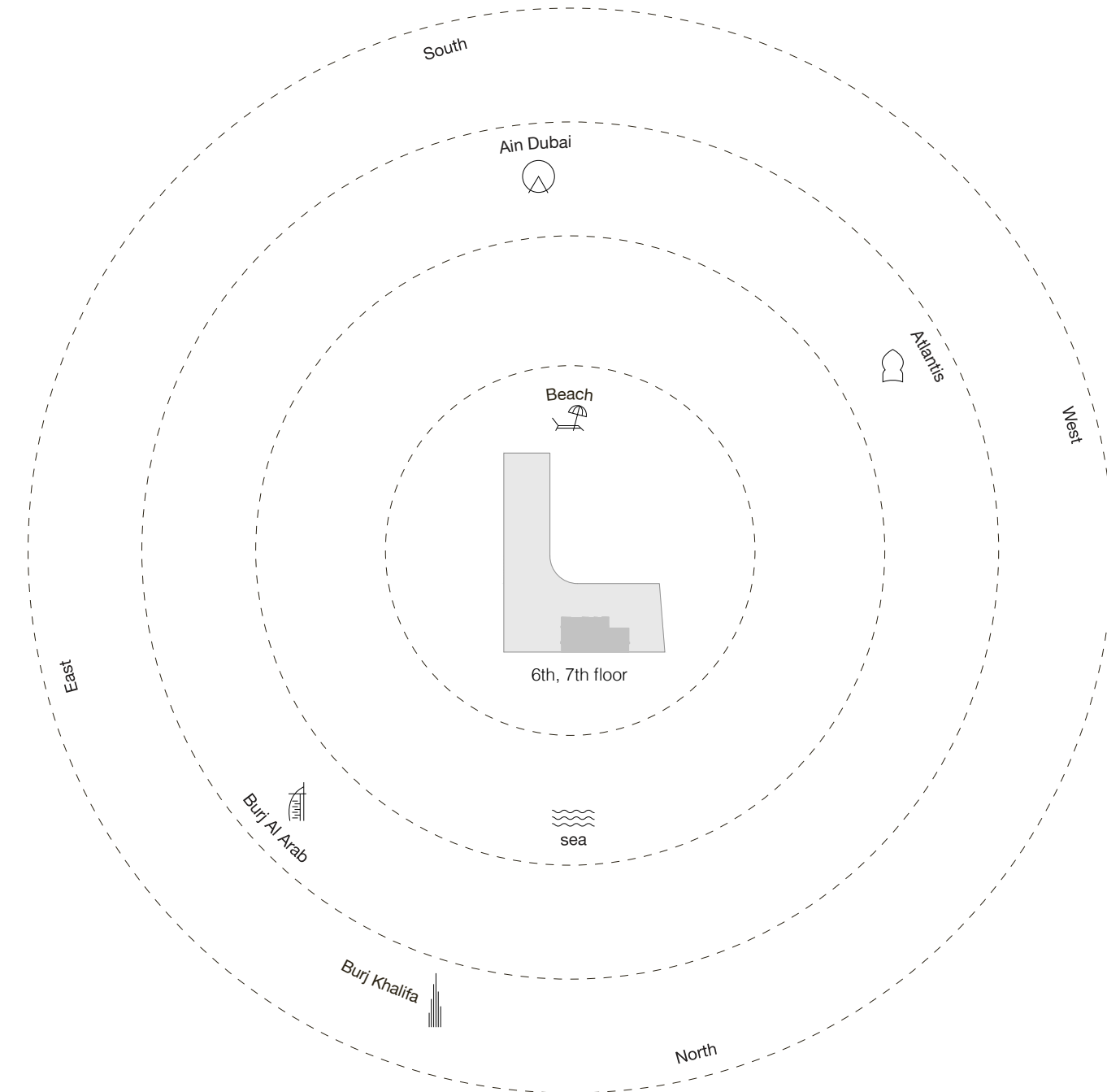


Four Bedroom Type A - Unit Plan



Four Bedroom Type A - Unit Details

Unit Numbers	Unit Area	Balcony Area	Total Area
A-601, A-701	443.04 m ² (4,769 sqft)	144.36 m ² (1,554 sqft)	587.40 m ² (6,323 sqft)



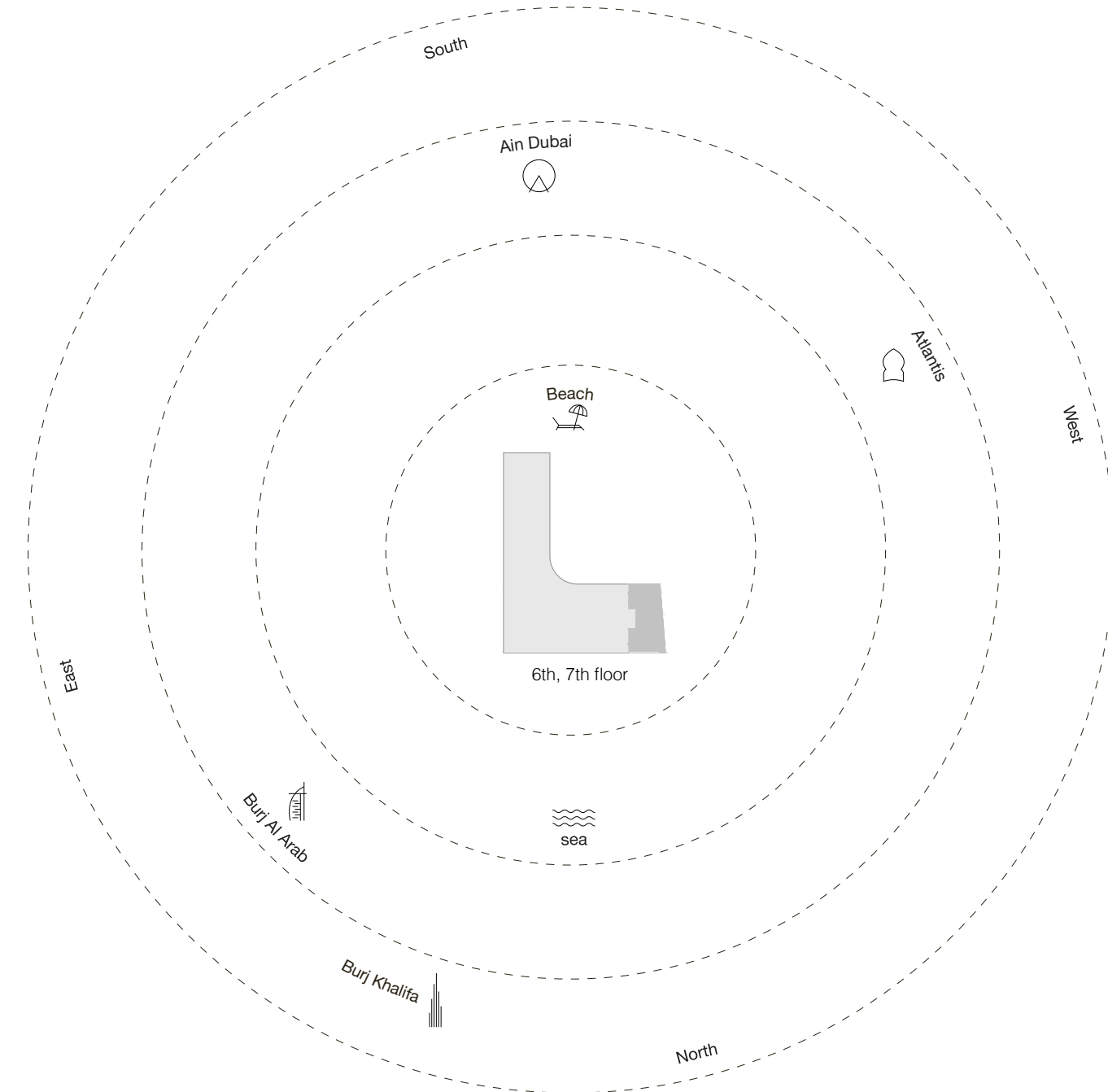
1-Measurements are indicative "finish to finish" in Metric & Imperial excluding construction tolerance. 2-Plot/unit dimensions may vary from brochure, and unit types/plans may exist as mirrored versions; 3-All images used are for illustrative purposes only. 4-Unless stated otherwise, all fittings and interior decorative items shown are for illustrative purposes only. 5-The developer reserves the right to make alterations, at its absolute discretion, without any liability whatsoever up to the final "as built" status.

Four Bedroom Type B - Unit Plan



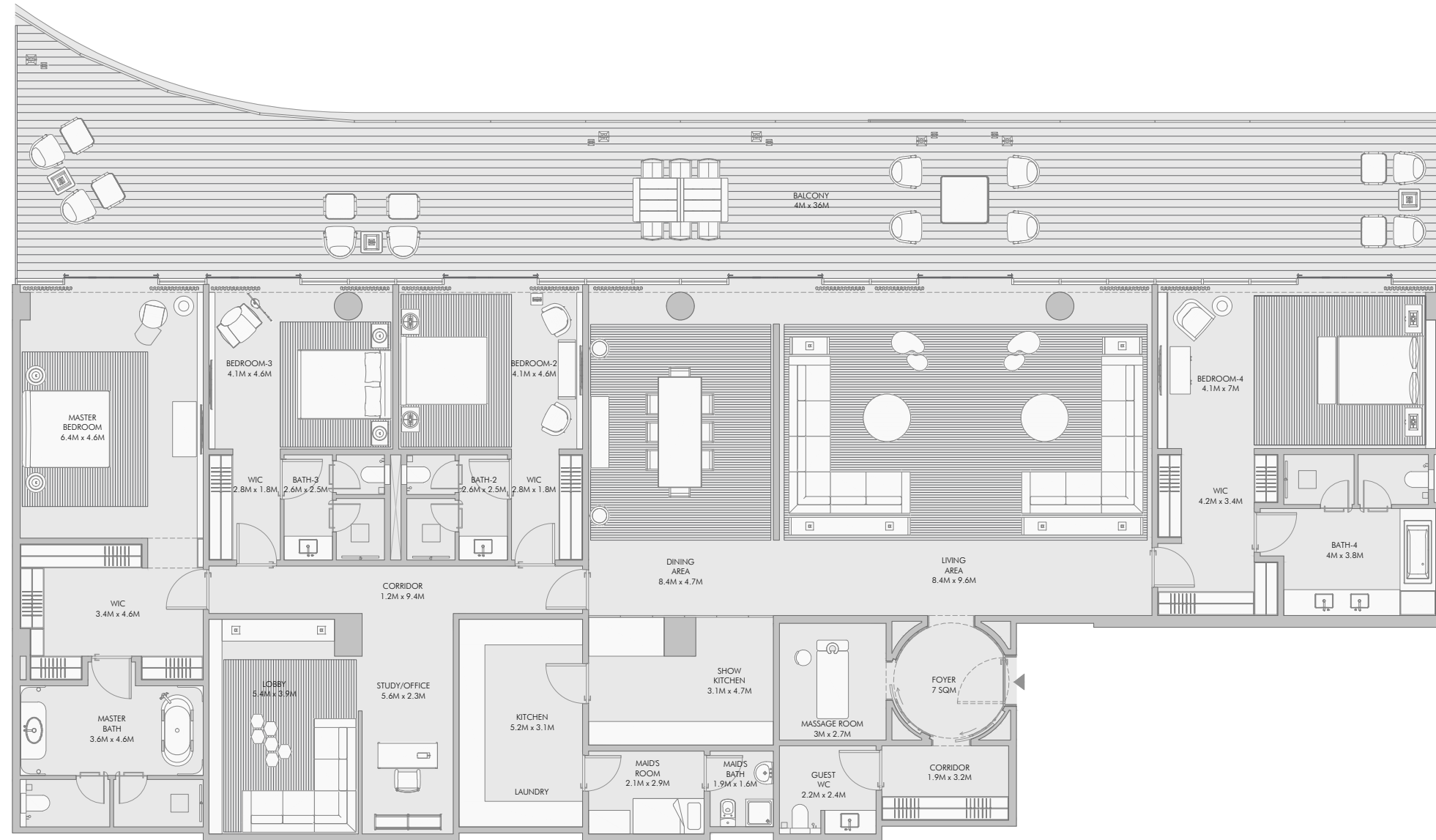
Four Bedroom Type B - Unit Details

Unit Numbers	Unit Area	Balcony Area	Total Area
A-603, A-703	395.05 m ² (4,252 sqft)	200.05 m ² (2,154 sqft)	595.10 m ² (6,406 sqft)



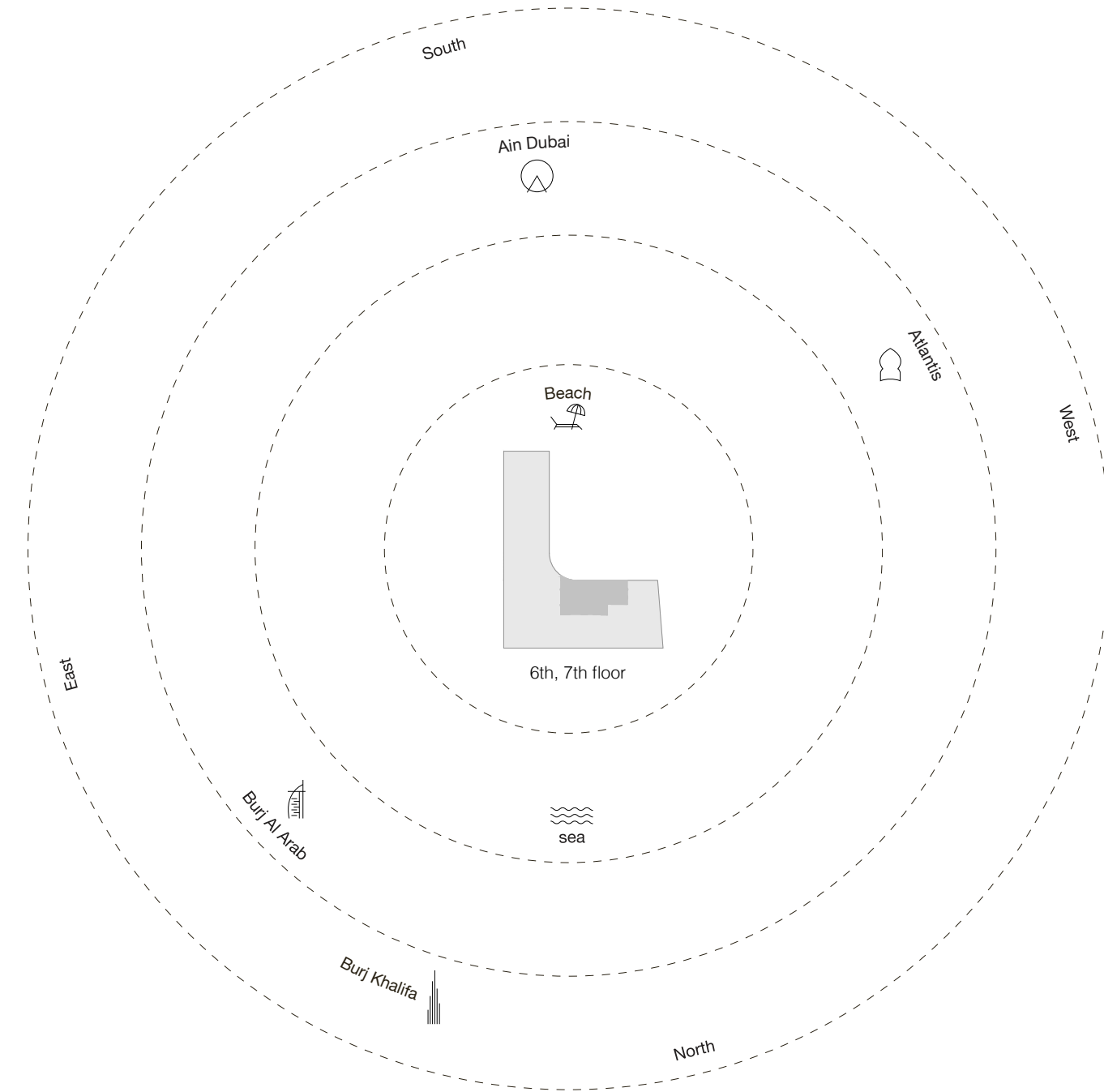
1-Measurements are indicative "finish to finish" in Metric & Imperial excluding construction tolerance. 2-Plot/unit dimensions may vary from brochure, and unit types/plans may exist as mirrored versions; 3-All images used are for illustrative purposes only. 4-Unless stated otherwise, all fittings and interior decorative items shown are for illustrative purposes only. 5-The developer reserves the right to make alterations, at its absolute discretion, without any liability whatsoever up to the final "as built" status.

Four Bedroom Type C - Unit Plan



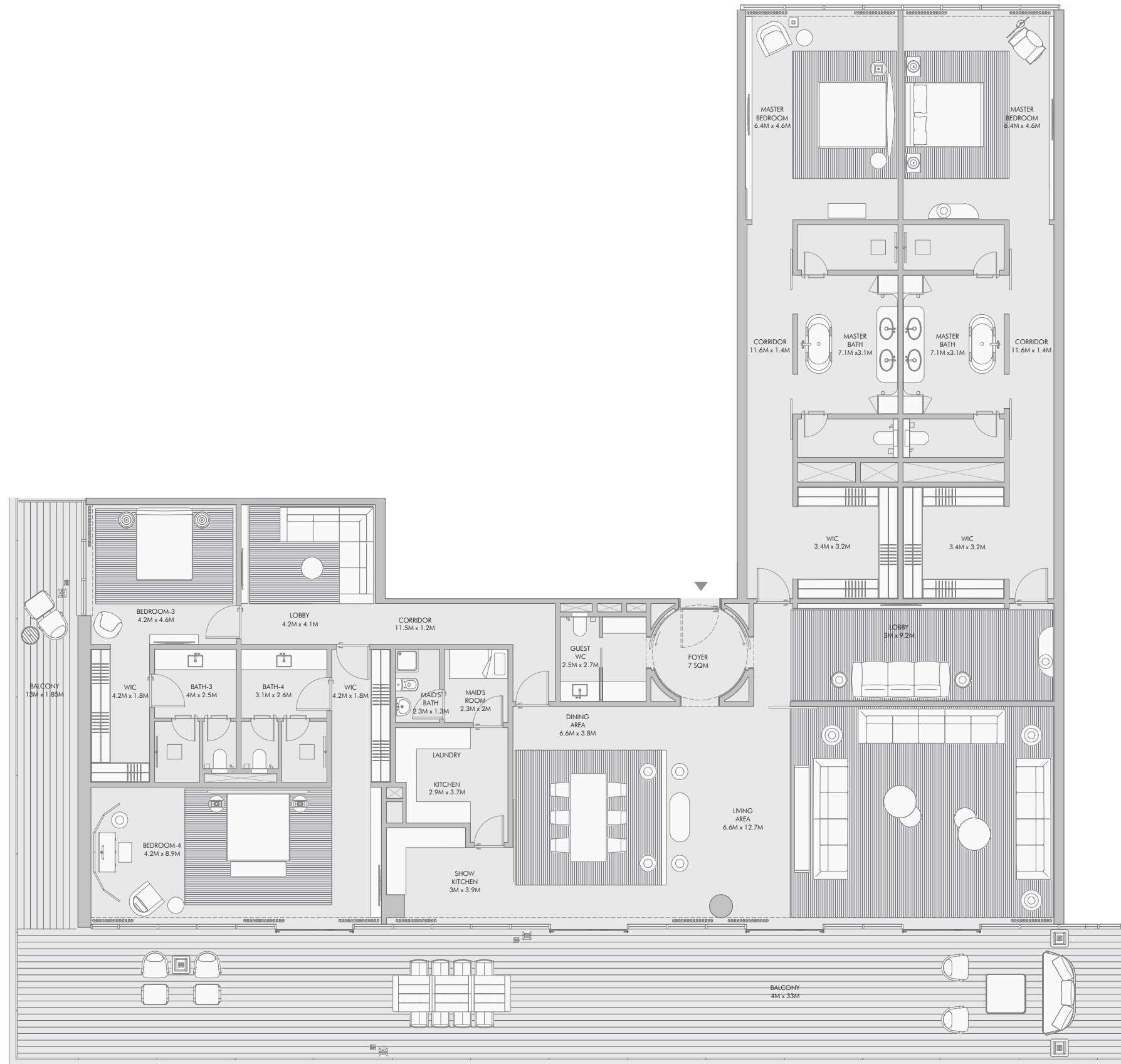
Four Bedroom Type C - Unit Details

Unit Numbers	Unit Area	Balcony Area	Total Area
A-602, A-702	444.10 m ² (4,780 sqft)	151.98 m ² (1,636 sqft)	596.08 m ² (6,416 sqft)



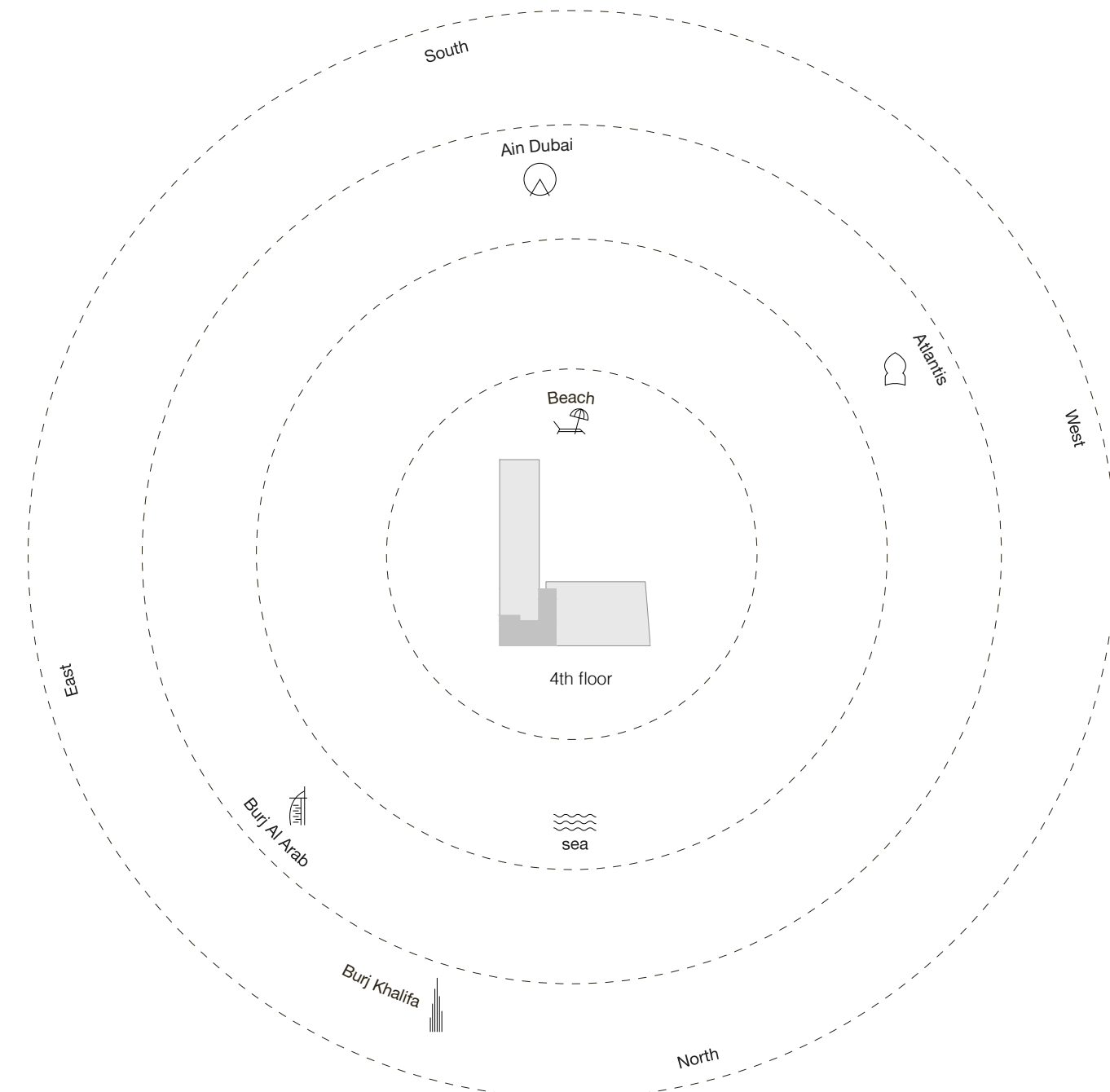
1-Measurements are indicative "finish to finish" in Metric & Imperial excluding construction tolerance. 2-Plot/unit dimensions may vary from brochure, and unit types/plans may exist as mirrored versions; 3-All images used are for illustrative purposes only. 4-Unless stated otherwise, all fittings and interior decorative items shown are for illustrative purposes only. 5-The developer reserves the right to make alterations, at its absolute discretion, without any liability whatsoever up to the final "as built" status.

Four Bedroom Type D - Unit Plan



Four Bedroom Type D - Unit Details

Unit Numbers	Unit Area	Balcony Area	Total Area
B-401	499.37 m ² (5,375 sqft)	168.65 m ² (1,816 sqft)	668.02 m ² (7,191 sqft)



1-Measurements are indicative 'finish to finish' in Metric & Imperial excluding construction tolerance. 2-Plot/unit dimensions may vary from brochure, and unit types/plans may exist as mirrored versions; 3-All images used are for illustrative purposes only. 4-Unless stated otherwise, all fittings and interior decorative items shown are for illustrative purposes only. 5-The developer reserves the right to make alterations, at its absolute discretion, without any liability whatsoever up to the final 'as built' status.

Four Bedroom Type E - Unit Plan



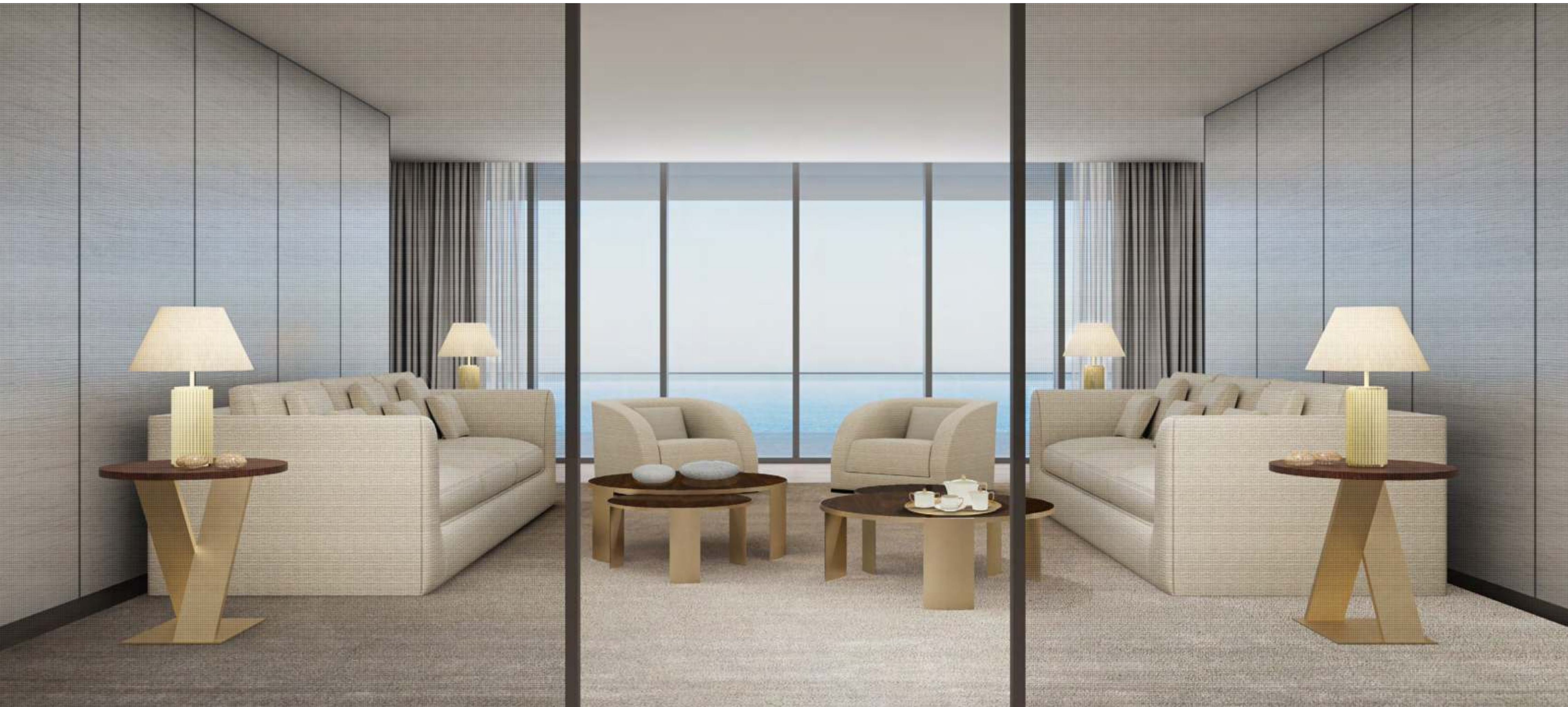
Four Bedroom Type E - Unit Details

Unit Numbers	Unit Area	Balcony Area	Total Area
B-501, B-601, B-701, B-801	508.54 m ² (5,474 sqft)	184.42 m ² (1,985 sqft)	692.92 m ² (7,459 sqft)



1-Measurements are indicative "finish to finish" in Metric & Imperial excluding construction tolerance. 2-Plot/unit dimensions may vary from brochure, and unit types/plans may exist as mirrored versions; 3-All images used are for illustrative purposes only. 4-Unless stated otherwise, all fittings and interior decorative items shown are for illustrative purposes only. 5-The developer reserves the right to make alterations, at its absolute discretion, without any liability whatsoever up to the final "as built" status.







About

Arada

Launched in 2017 and headquartered in the UAE, Arada is the region's fastest-growing and most progressive developer. Arada was created to build communities and experiences that enrich, engage and inspire people.

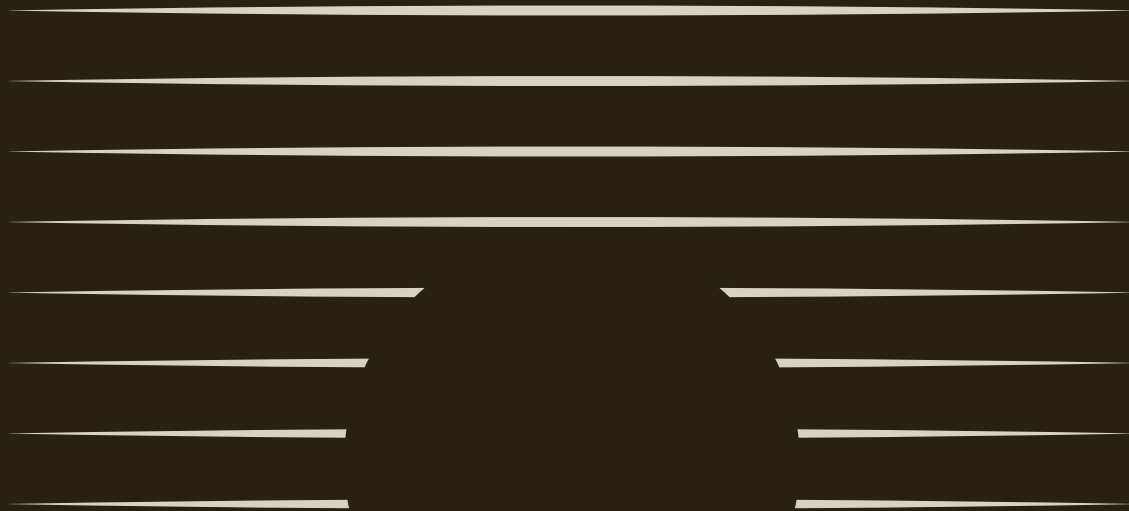
Our homes are exceptionally designed and are complemented with best-in-class amenities, all provided at an accessible price point. Our prime focuses are on the intersection of community, technology and sustainability – all critical and fast-moving issues in the world today - and how these three themes can improve the lives of residents, workers and visitors in Arada's developments.

Arada has so far launched three record-breaking communities in Sharjah, Aljada, Nasma Residences and Masaar, as well as Jouri Hills at Jumeirah Golf Estates in Dubai, and a fifth project, Armani Beach Residences at Palm Jumeirah.

 **ARADA**

ARMANI

Beach Residences at Palm Jumeirah



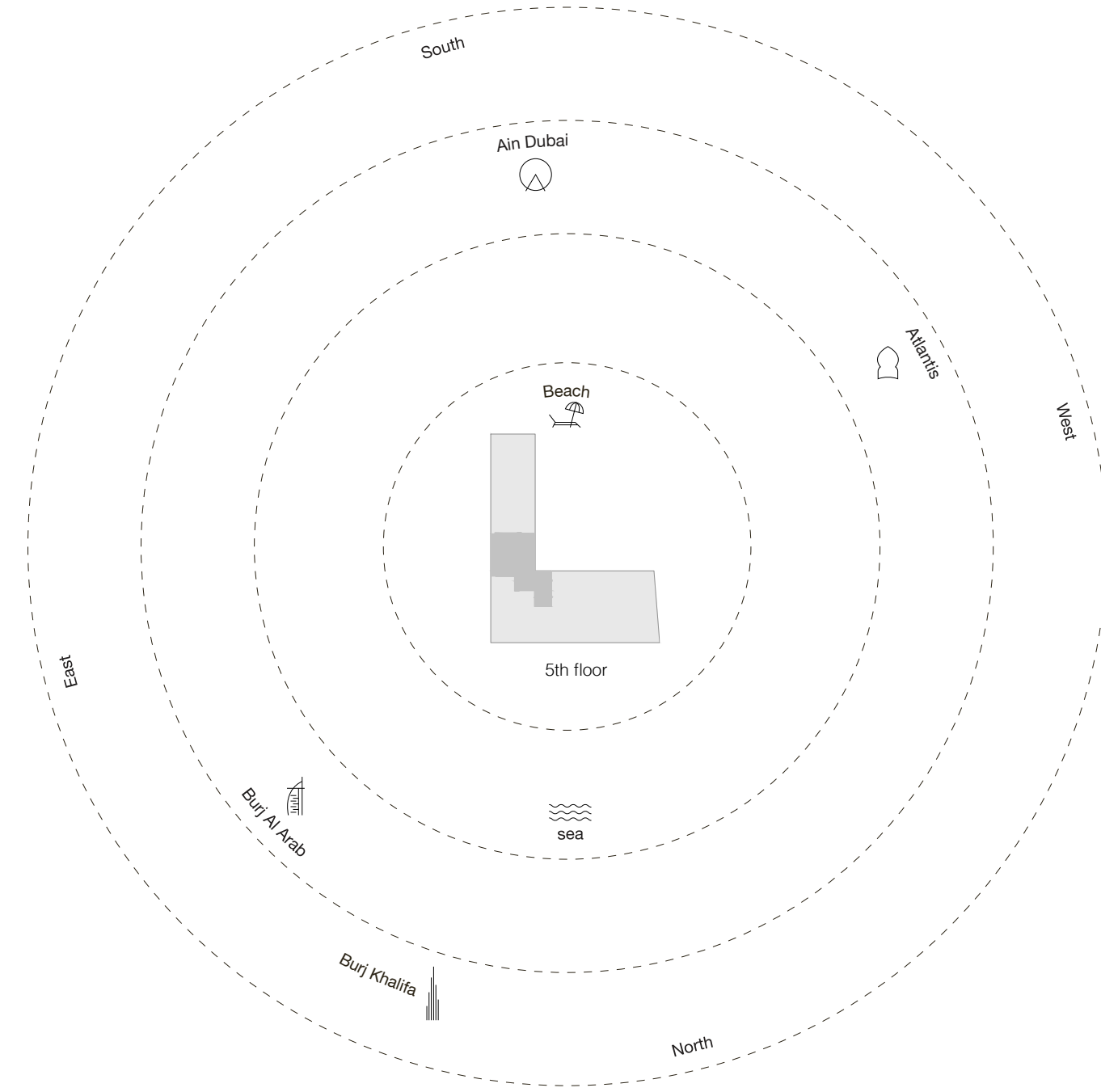
Ultra luxury at The Palm Jumeirah

Five Bedroom Type A - Unit Plan



Five Bedroom Type A - Unit Details

Unit Numbers	Unit Area	Balcony Area	Total Area
B-502	625.20 m ² (6,730 sqft)	78.20 m ² (841 sqft)	703.40 m ² (7,571 sqft)



1-Measurements are indicative "finish to finish" in Metric & Imperial excluding construction tolerance. 2-Plot/unit dimensions may vary from brochure, and unit types/plans may exist as mirrored versions; 3-All images used are for illustrative purposes only. 4-Unless stated otherwise, all fittings and interior decorative items shown are for illustrative purposes only. 5-The developer reserves the right to make alterations, at its absolute discretion, without any liability whatsoever up to the final "as built" status.

Five Bedroom Type B - Unit Plan

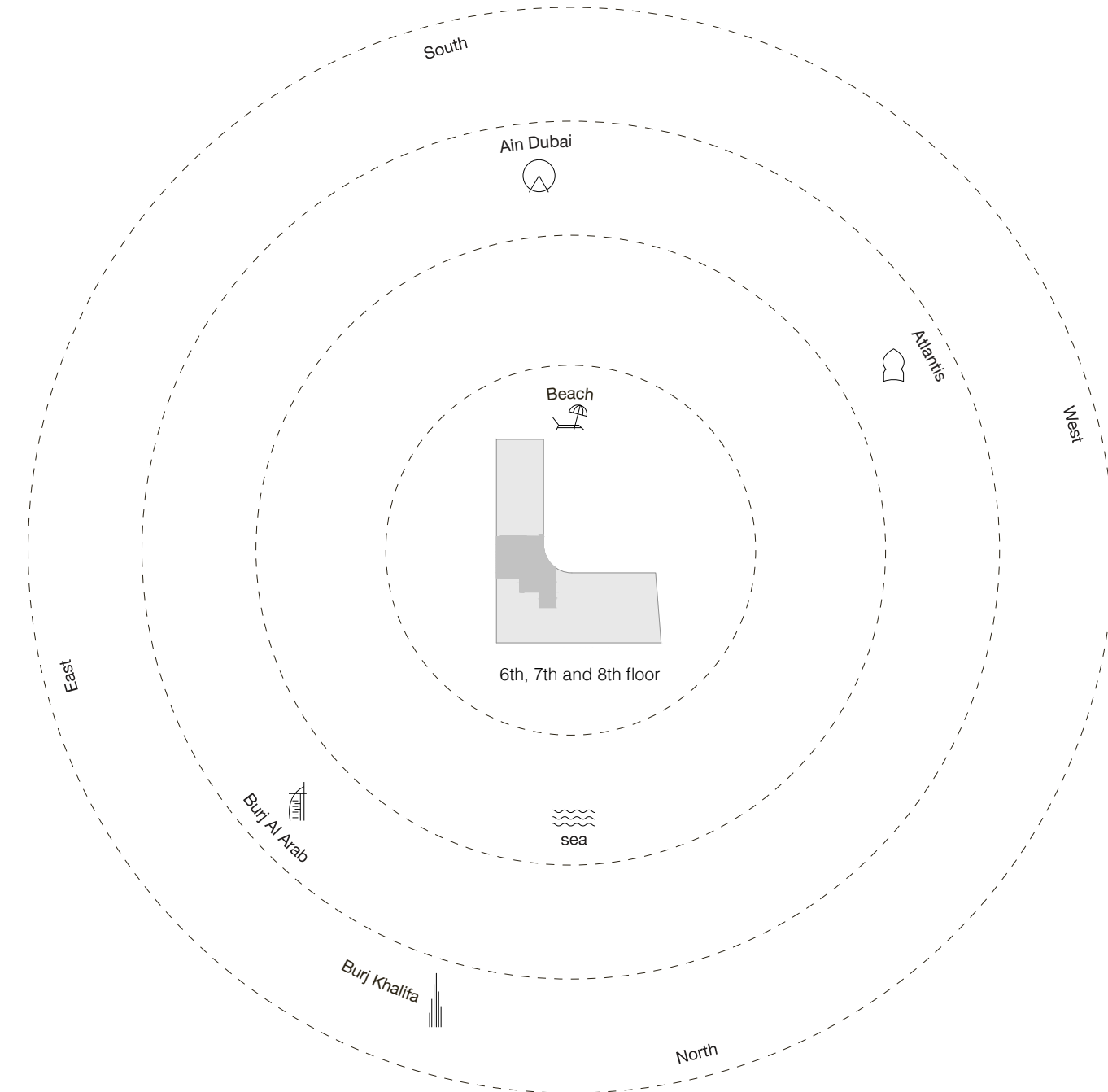


56



Five Bedroom Type B - Unit Details

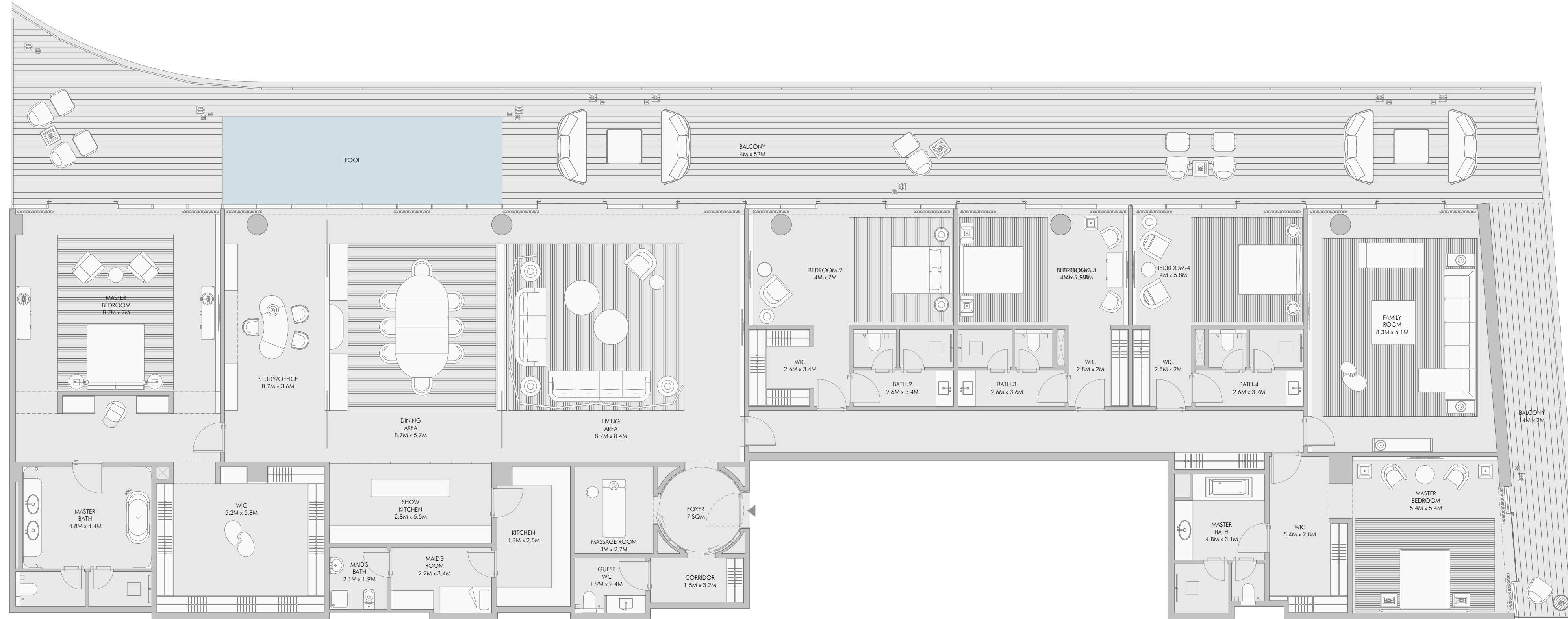
Unit Numbers	Unit Area	Balcony Area	Total Area
B-602, B-702, B-802	625.55 m ² (6,733 sqft)	161.52 m ² (1,739 sqft)	787.07 m ² (8,472 sqft)



57

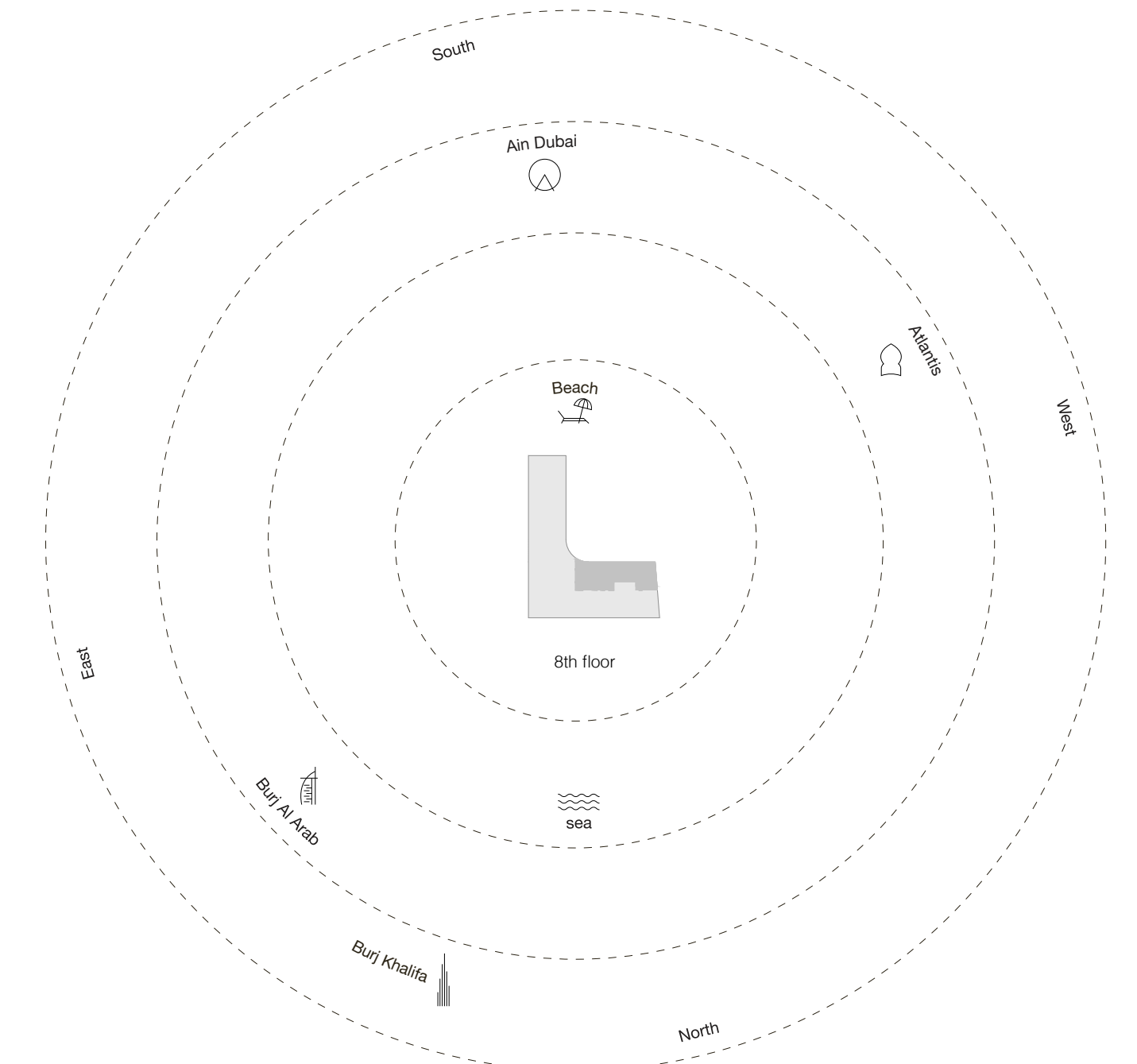
1-Measurements are indicative "finish to finish" in Metric & Imperial excluding construction tolerance. 2-Plot/unit dimensions may vary from brochure, and unit types/plans may exist as mirrored versions; 3-All images used are for illustrative purposes only. 4-Unless stated otherwise, all fittings and interior decorative items shown are for illustrative purposes only. 5-The developer reserves the right to make alterations, at its absolute discretion, without any liability whatsoever up to the final "as built" status.

Five Bedroom Type Penthouse 1 - Unit Plan



Five Bedroom Type Penthouse 1 - Unit Details

Unit Numbers	Unit Area	Balcony Area	Total Area
A-802	635.42 m ² (6,840 sqft)	247.29 m ² (2,661 sqft)	882.71 m ² (9,501 sqft)



1-Measurements are indicative 'finish to finish' in Metric & Imperial excluding construction tolerance. 2-Plot/unit dimensions may vary from brochure, and unit types/plans may exist as mirrored versions; 3-All images used are for illustrative purposes only. 4-Unless stated otherwise, all fittings and interior decorative items shown are for illustrative purposes only. 5-The developer reserves the right to make alterations, at its absolute discretion, without any liability whatsoever up to the final 'as built' status.

Five Bedroom Type Penthouse 2 - Unit Plan

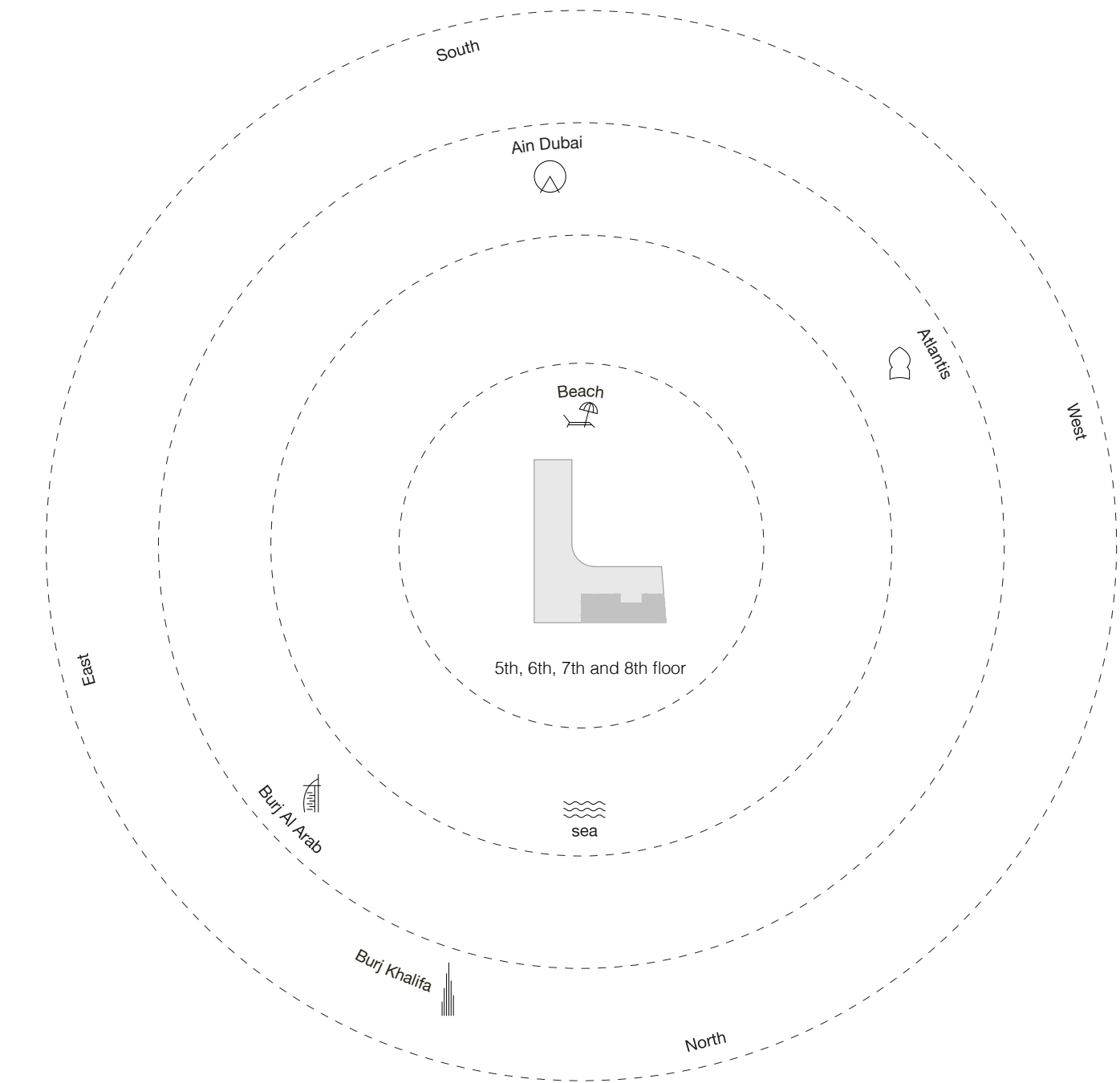
Five Bedroom Type Penthouse 2 - Unit Details

Unit Numbers	Unit Area	Balcony Area	Total Area
A-801	647.79 m ² (6,973 sqft)	250.05 m ² (2,691 sqft)	897.84 m ² (9,664 sqft)

79

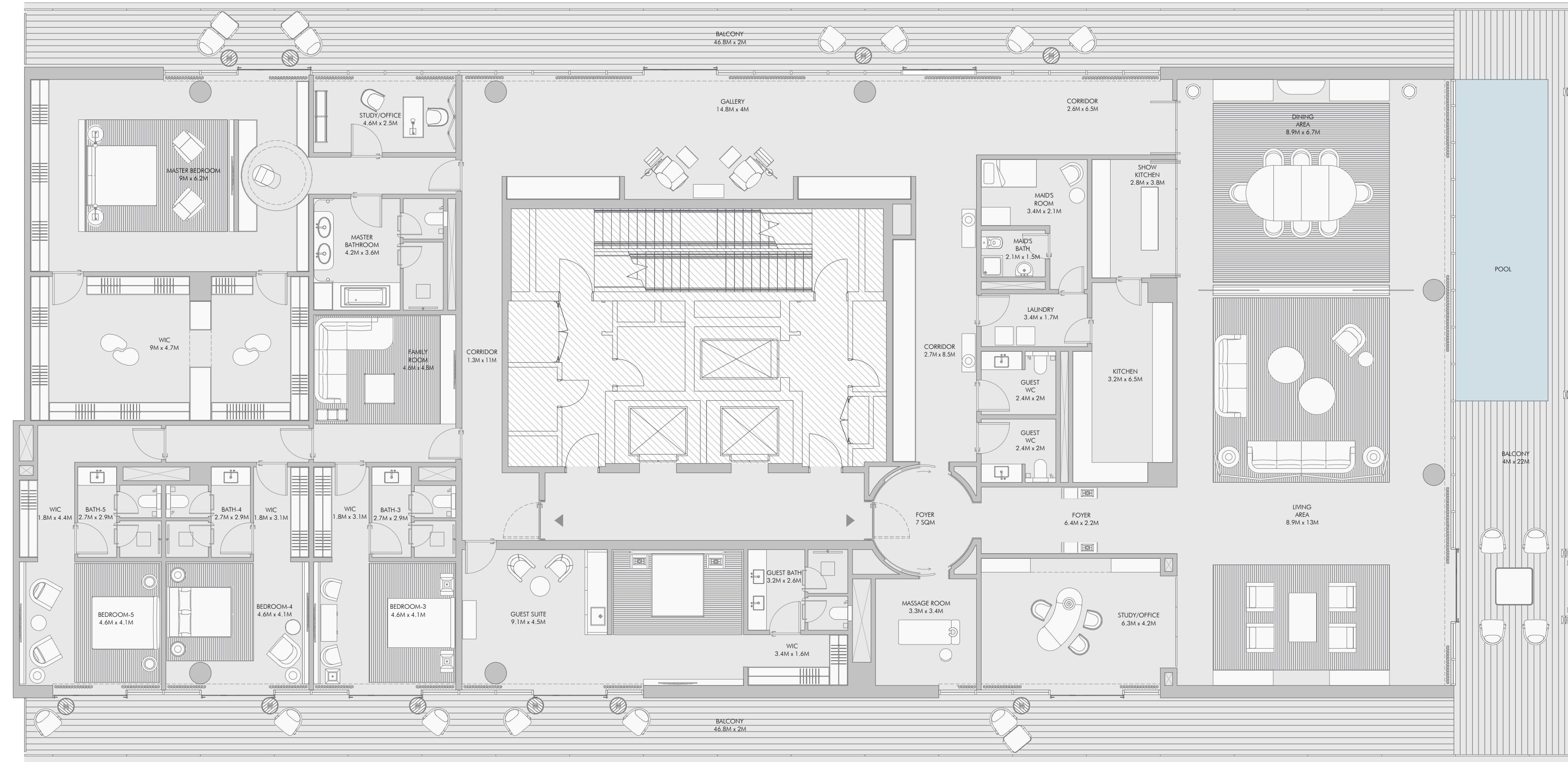


81



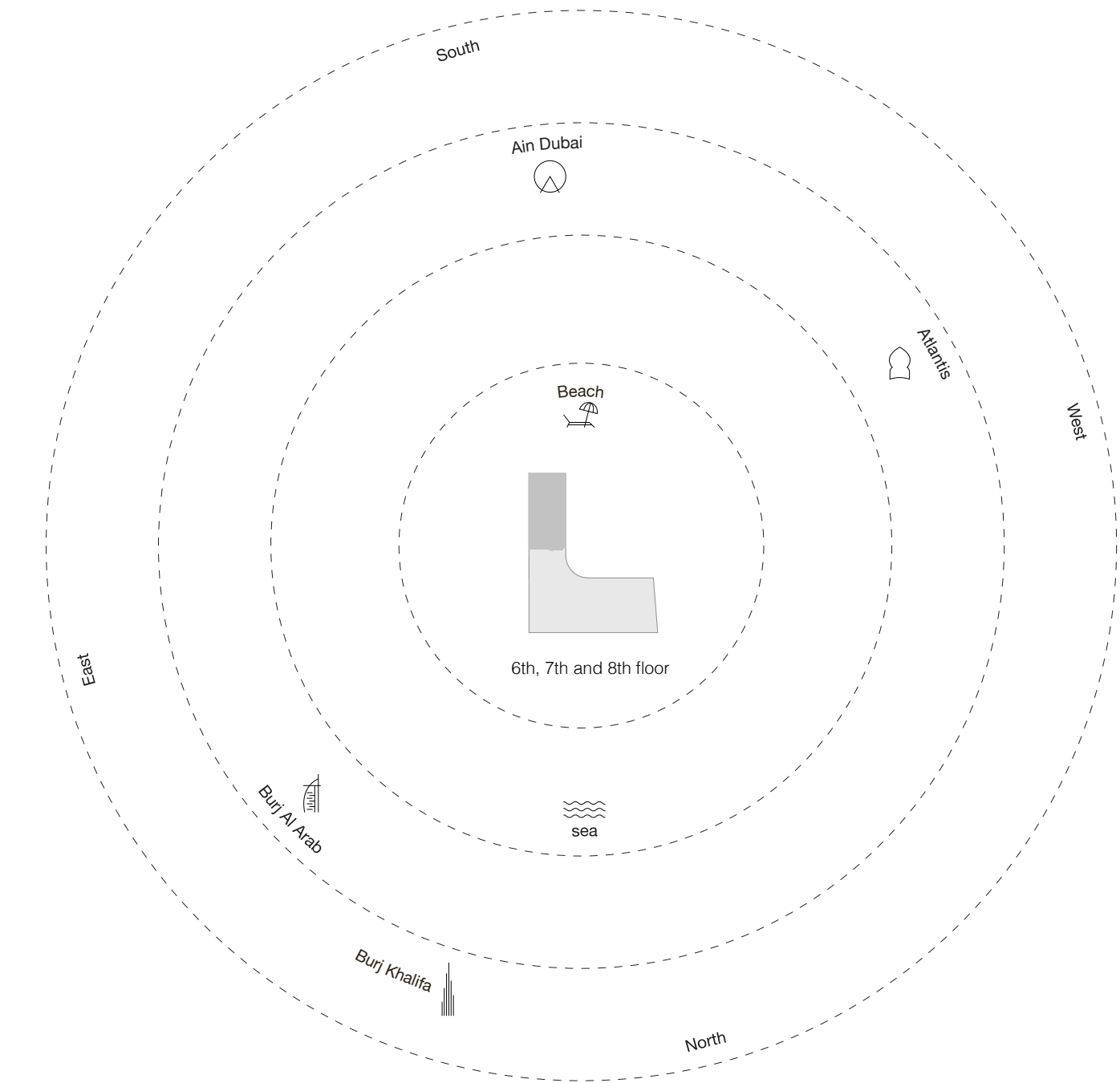
1-Measurements are indicative 'finish to finish' in Metric & Imperial excluding construction tolerance. 2-Plot/unit dimensions may vary from brochure, and unit types/plans may exist as mirrored versions; 3-All images used are for illustrative purposes only. 4-Unless stated otherwise, all fittings and interior decorative items shown are for illustrative purposes only. 5-The developer reserves the right to make alterations, at its absolute discretion, without any liability whatsoever up to the final 'as built' status.

Five Bedroom Type Penthouse 4 - Unit Plan



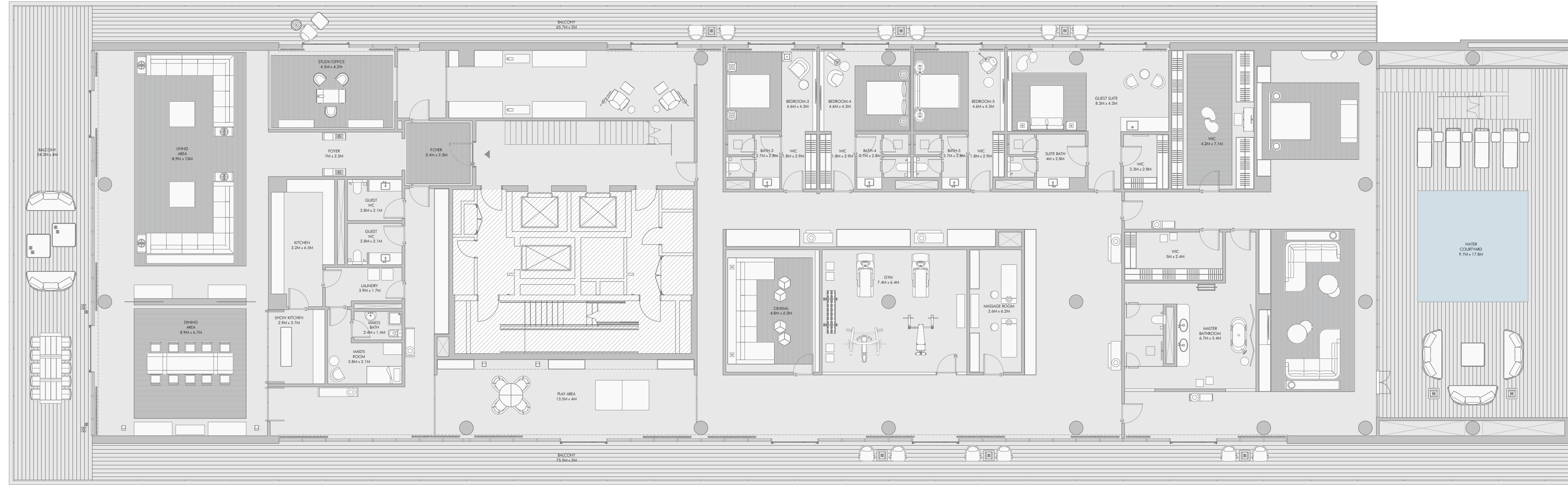
Five Bedroom Type Penthouse 4 - Unit Details

Unit Numbers	Unit Area	Balcony Area	Total Area
C-601, C-701, C-801	794.43 m ² (8,551 sqft)	287.50 m ² (3,095 sqft)	1,081.93 m ² (11,646 sqft)



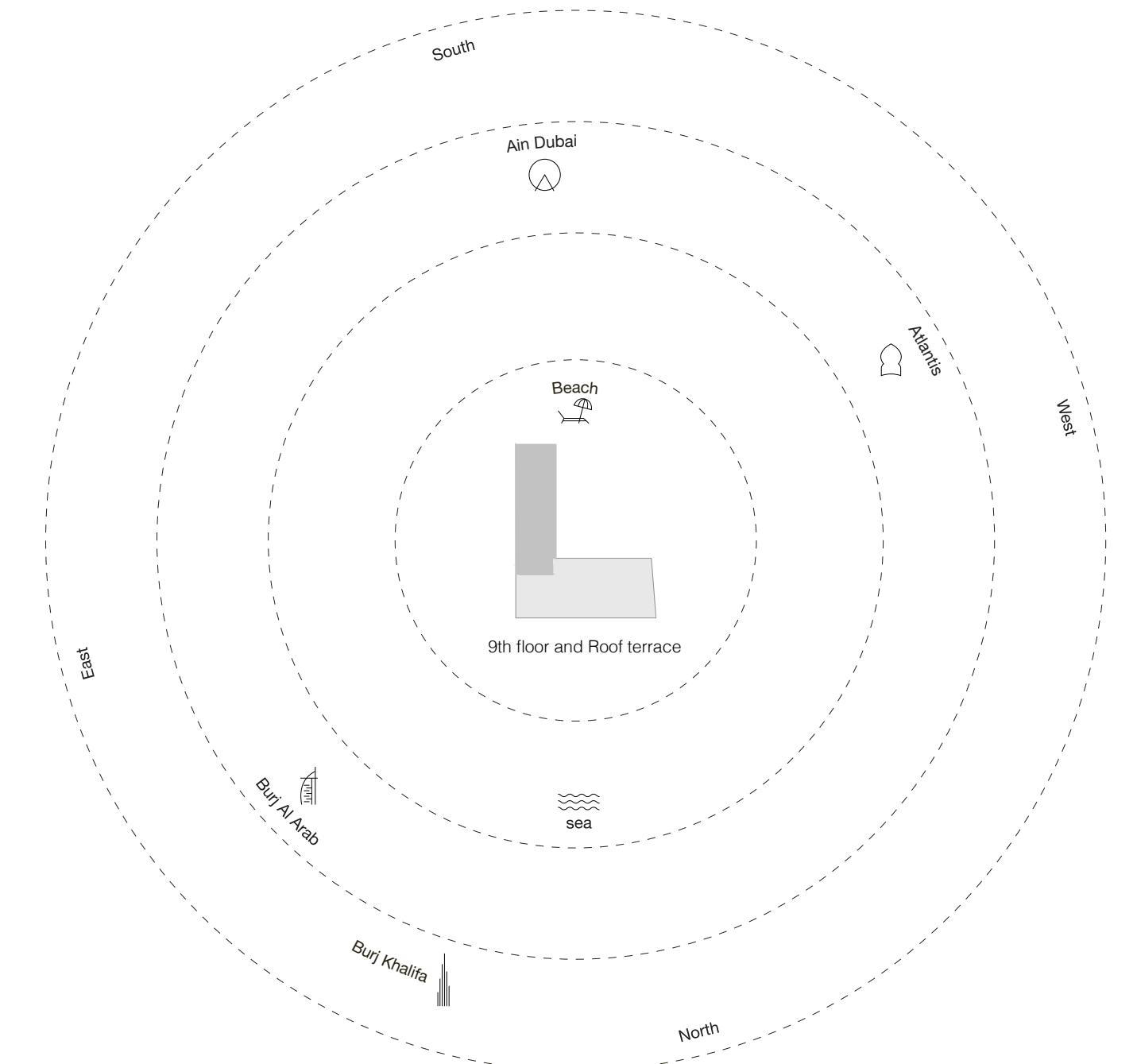
1-Measurements are indicative 'finish to finish' in Metric & Imperial excluding construction tolerance. 2-Plot/unit dimensions may vary from brochure, and unit types/plans may exist as mirrored versions; 3-All images used are for illustrative purposes only. 4-Unless stated otherwise, all fittings and interior decorative items shown are for illustrative purposes only. 5-The developer reserves the right to make alterations, at its absolute discretion, without any liability whatsoever up to the final 'as built' status.

Presidential Suite 1 First Floor - Unit Plan



Presidential Suite 1 First Floor - Unit Details

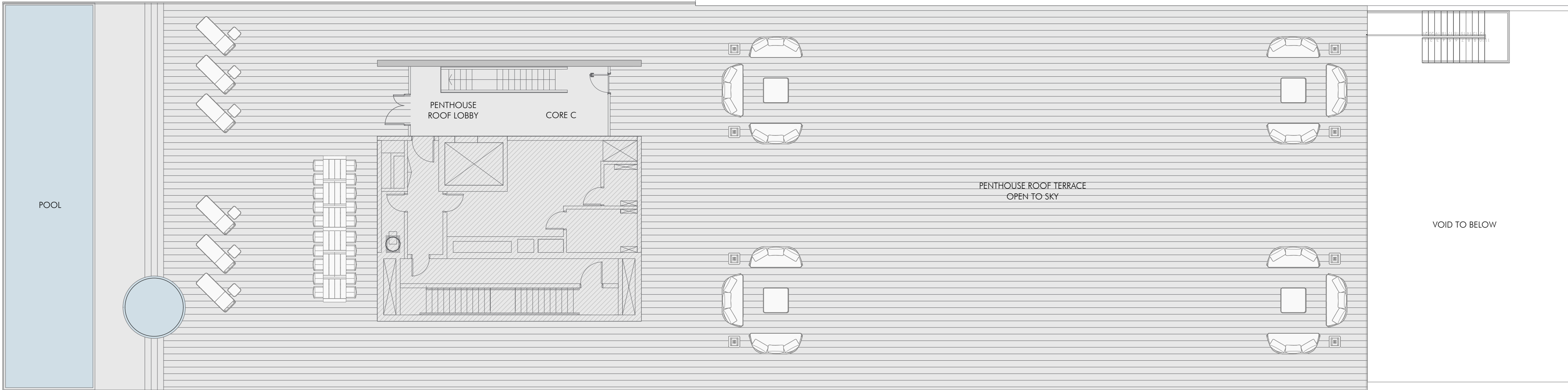
Unit Numbers	Unit Area	Balcony Area	Total Area
C-901	1,242.53 m ² (13,374 sqft)	1,632.75 m ² (17,575 sqft)	2,875.28 m ² (30,949 sqft)



1-Measurements are indicative 'finish to finish' in Metric & Imperial excluding construction tolerance. 2-Plot/unit dimensions may vary from brochure, and unit types/plans may exist as mirrored versions; 3-All images used are for illustrative purposes only. 4-Unless stated otherwise, all fittings and interior decorative items shown are for illustrative purposes only. 5-The developer reserves the right to make alterations, at its absolute discretion, without any liability whatsoever up to the final 'as built' status.

Presidential Suite 1 Roof Top Terrace - Unit Plan

112



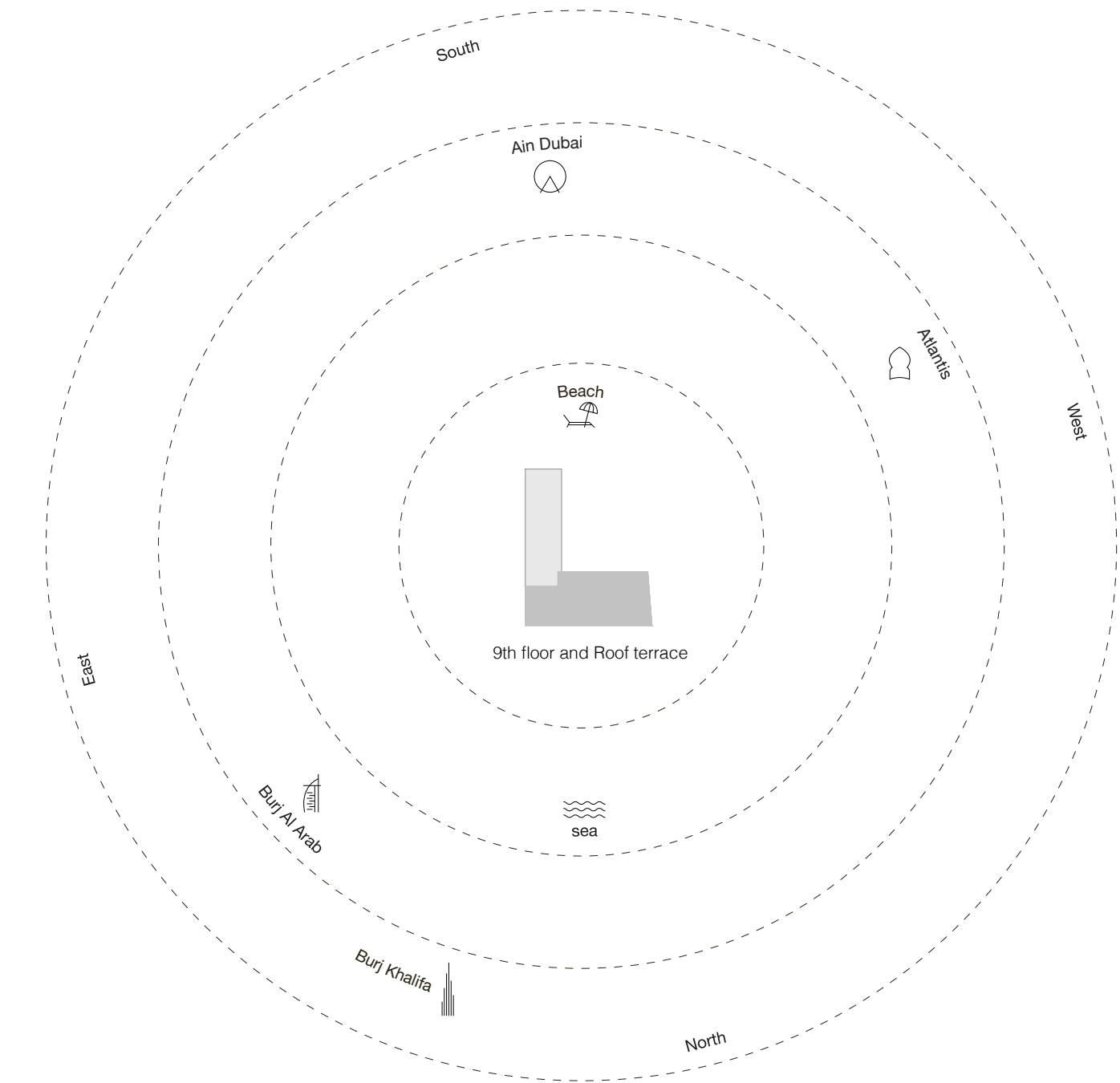
113

Presidential Suite 2 First Floor - Unit Plan



Presidential Suite 2 First Floor - Unit Details

Unit Numbers	Unit Area	Balcony Area	Total Area
A-901	1,698.97 m ² (18,288 sqft)	2,372.94 m ² (25,542 sqft)	4,071.91 m ² (43,830 sqft)



1-Measurements are indicative 'finish to finish' in Metric & Imperial excluding construction tolerance. 2-Plot/unit dimensions may vary from brochure, and unit types/plans may exist as mirrored versions; 3-All images used are for illustrative purposes only. 4-Unless stated otherwise, all fittings and interior decorative items shown are for illustrative purposes only. 5-The developer reserves the right to make alterations, at its absolute discretion, without any liability whatsoever up to the final 'as built' status.

Presidential Suite 2 Roof Top Terrace - Unit Plan

