



# OCEAN HOUSE

ELLINGTON

FLOOR PLAN

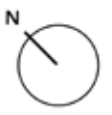
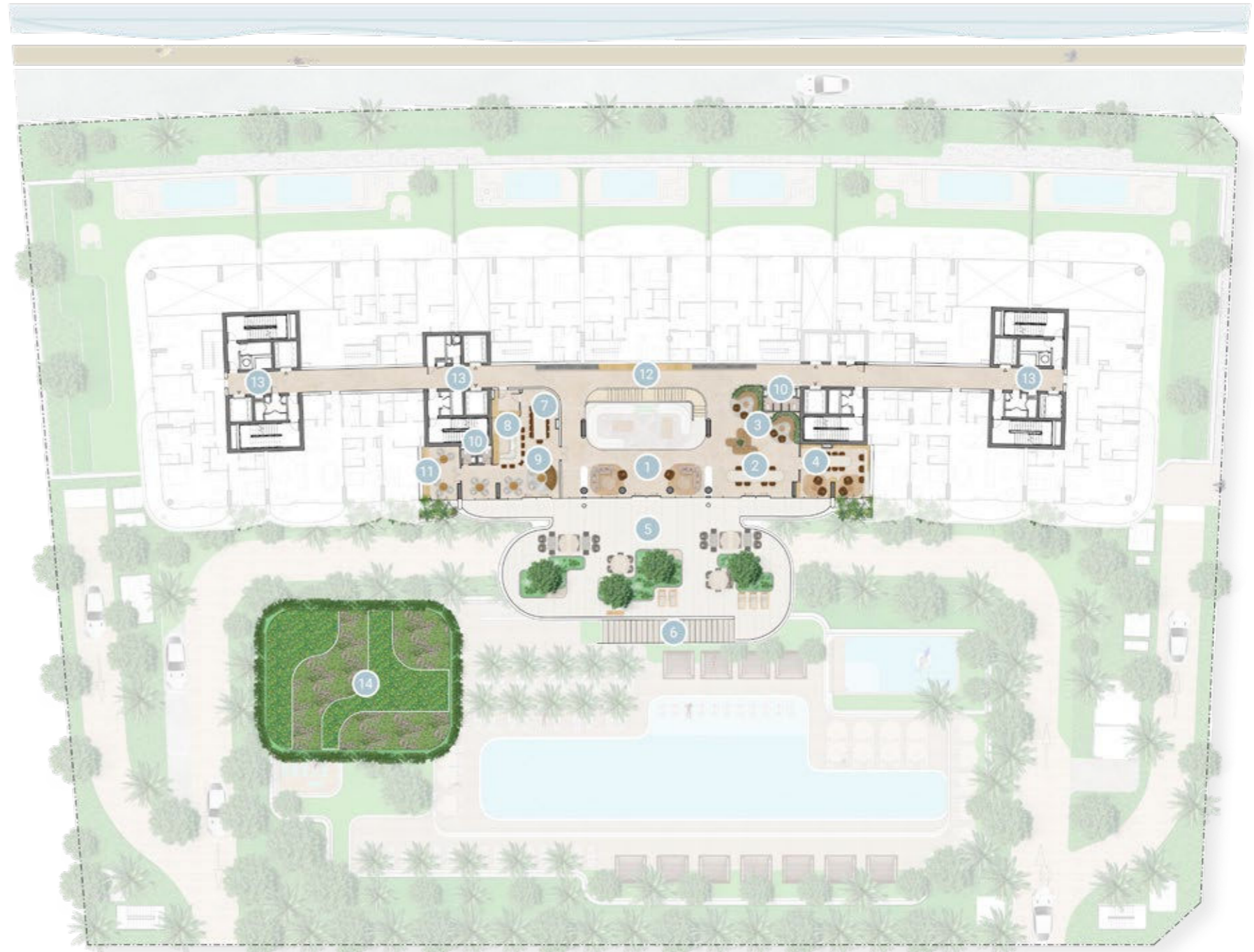
# GROUND FLOOR AMENITIES PLAN

- 01 MAIN ENTRANCE
- 02 KIDS PLAY AREA
- 03 KIDS BATHROOM
- 04 MEETING ROOM
- 05 LOBBY LOUNGE
- 06 LOBBY ENTRANCE
- 07 DROP-OFF AREA
- 08 LOBBY RECEPTION
- 09 CINEMA ROOM
- 10 GAMES ROOM
- 11 ACCESS TO THE POOL TERRACE
- 12 FEATURE STAIRCASE
- 13 OLYMPIC SIZE POOL
- 14 BAJA SHELF
- 15 CABANAS
- 16 SUN LOUNGERS' AREA
- 17 KIDS POOL
- 18 FITNESS STUDIO
- 19 OUTDOOR YOGA DECK
- 20 FEMALE CHANGE ROOM
- 21 MALE CHANGE ROOM
- 22 ACCESS TO WELLNESS SPA
- 23 VISITOR PARKING
- 24 VEHICLE ENTRANCE
- 25 VEHICLE EXIT
- 26 SALT CAVE
- 27 STEAM ROOM
- 28 INFRARED SAUNA ROOM
- 29 PLUNGE POOL
- 30 AROMATHERAPY EXPERIENCE SHOWER
- 31 HYDROTHERAPY PATH WALK
- 32 ACCESS TO BASEMENT PARKING



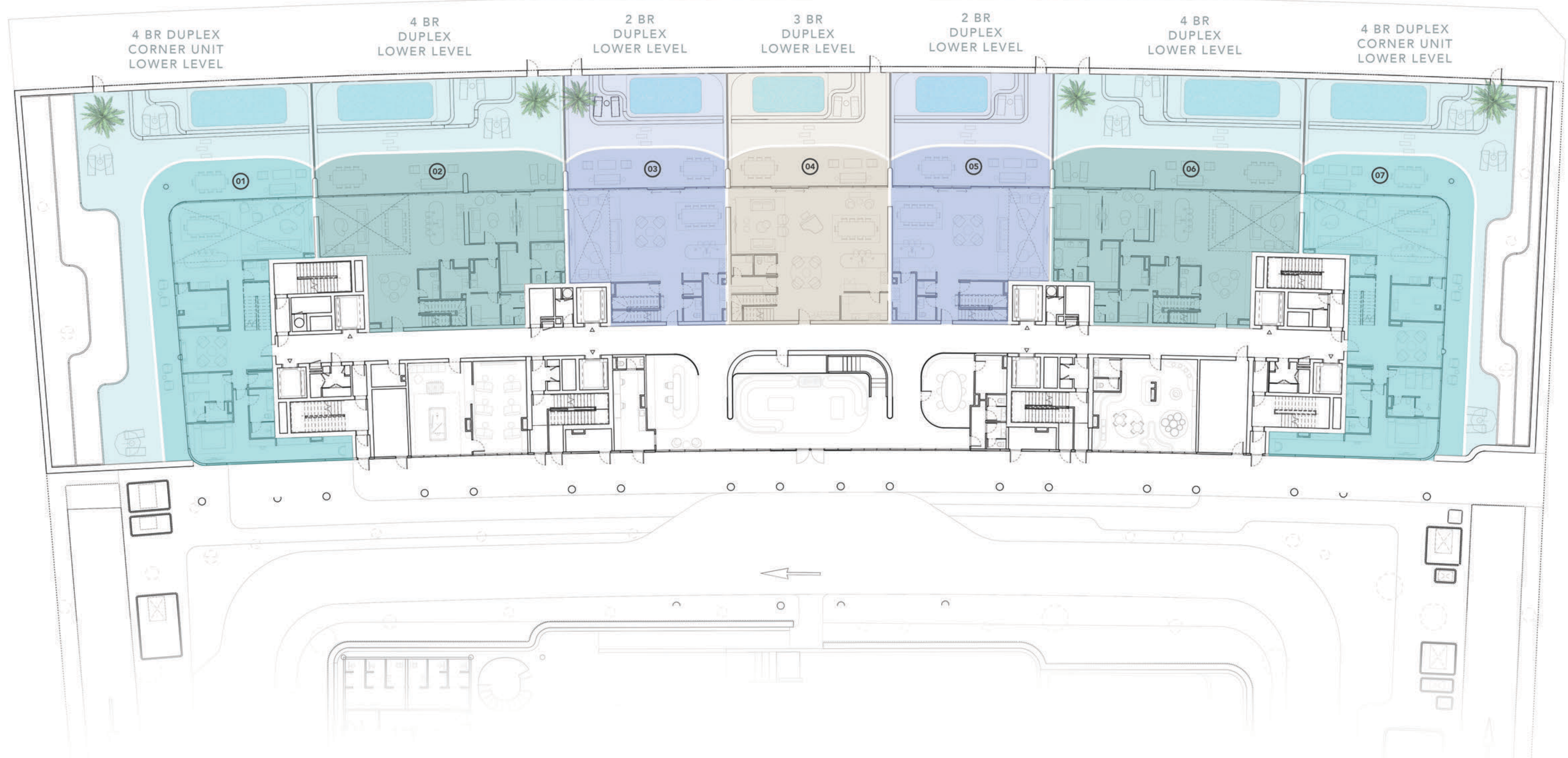
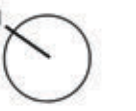
# 1<sup>ST</sup> FLOOR AMENITIES PLAN

- 01 LOUNGE AREA
- 02 COMMUNAL TABLE
- 03 CO-WORKING AREA
- 04 LIBRARY ROOM
- 05 OUTDOOR TERRACE LOUNGE
- 06 ACCESS TO POOL DECK
- 07 PRIVATE DINING
- 08 SHOW KITCHEN
- 09 PRIVATE LOUNGE
- 10 WASHROOM
- 11 CIGAR ROOM
- 12 GALLERY WALL
- 13 LIFT LOBBIES
- 14 ROOFTOP GARDEN



DOWNTOWN DUBAI VIEWS

BURJ AL ARAB VIEWS



GROUND FLOOR PLAN



2 BEDROOM DUPLEX APARTMENTS WITH PRIVATE POOL



3 BEDROOM DUPLEX APARTMENT WITH PRIVATE POOL



4 BEDROOM CORNER DUPLEX APARTMENTS WITH PRIVATE POOL



4 BEDROOM DUPLEX APARTMENTS WITH PRIVATE POOL

DOWNTOWN DUBAI VIEWS

BURJ AL ARAB VIEWS



4 BR DUPLEX  
CORNER UNIT  
UPPER LEVEL

4 BR  
DUPLEX  
UPPER LEVEL

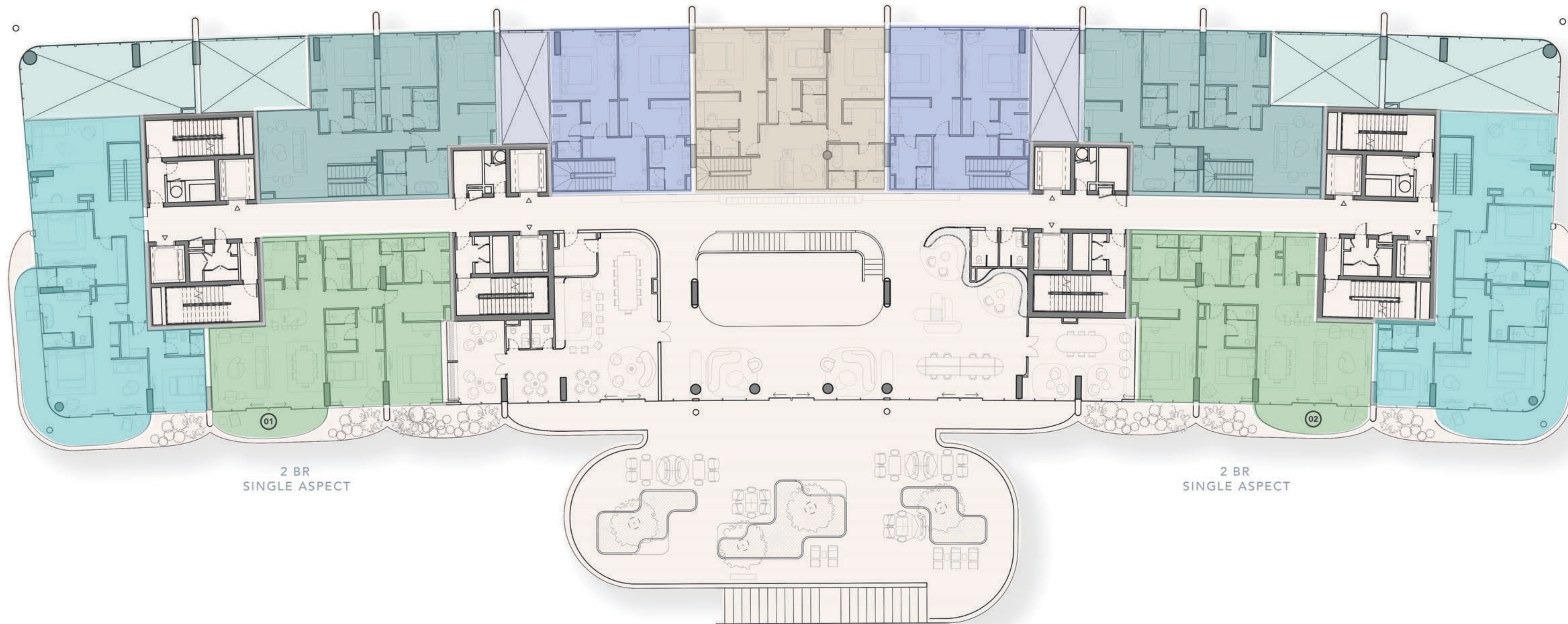
2 BR  
DUPLEX  
UPPER LEVEL

3 BR  
DUPLEX  
UPPER LEVEL

2 BR  
DUPLEX  
UPPER LEVEL

4 BR  
DUPLEX  
UPPER LEVEL

4 BR DUPLEX  
CORNER UNIT  
UPPER LEVEL



2 BR  
SINGLE ASPECT

2 BR  
SINGLE ASPECT

OCEAN HOUSE POOL VIEWS

### LEVEL 01 FLOOR PLAN



2 BEDROOM DUPLEX  
APARTMENTS  
WITH PRIVATE POOL



2 BEDROOM SINGLE  
ASPECT APARTMENTS



3 BEDROOM DUPLEX  
APARTMENT  
WITH PRIVATE POOL



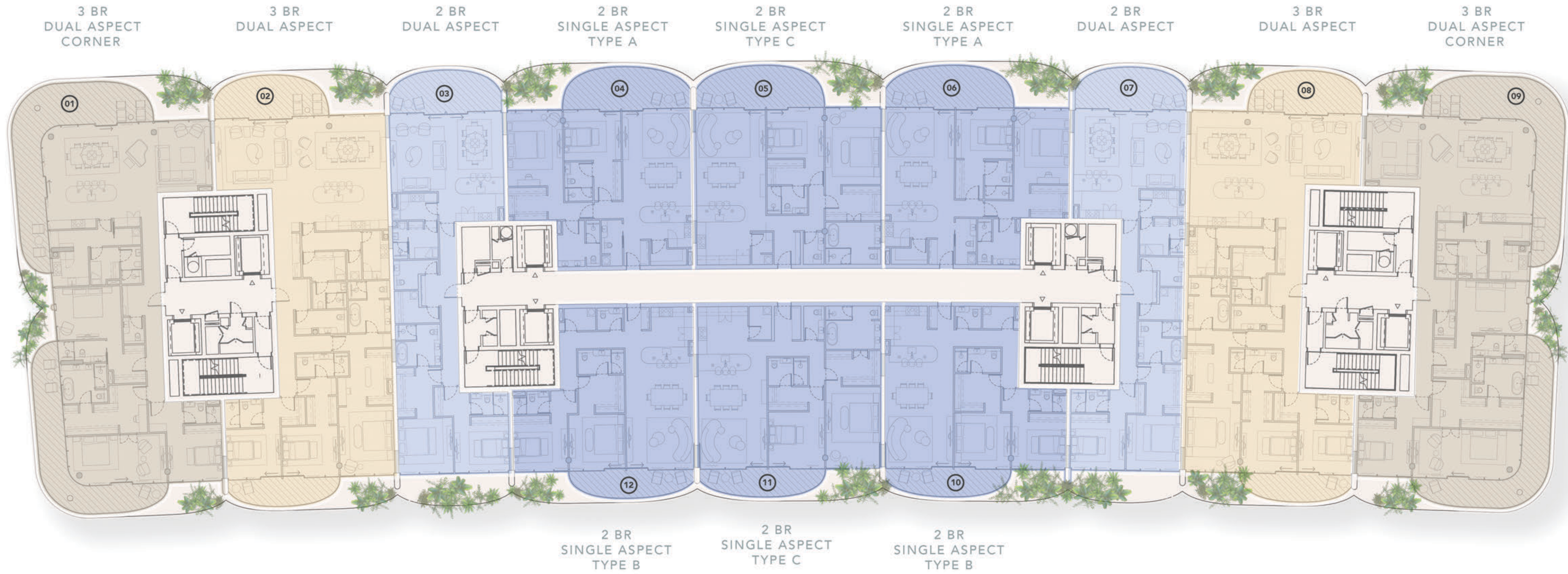
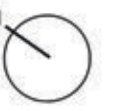
4 BEDROOM CORNER  
DUPLEX APARTMENTS  
WITH PRIVATE POOL



4 BEDROOM DUPLEX  
APARTMENTS  
WITH PRIVATE POOL

DOWNTOWN DUBAI VIEWS

BURJ AL ARAB VIEWS



ROYAL ATLANTIS VIEWS

DUBAI MARINA VIEWS

### LEVEL 02-07 TYPICAL FLOOR PLAN



2 BEDROOM SINGLE ASPECT APARTMENTS



2 BEDROOM DUAL ASPECT APARTMENTS



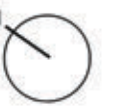
3 BEDROOM DUAL ASPECT CORNER APARTMENTS



3 BEDROOM DUAL ASPECT APARTMENTS

DOWNTOWN DUBAI VIEWS

BURJ AL ARAB VIEWS



3 BR  
DUAL ASPECT  
CORNER

4 BR  
DUAL ASPECT

6 BR  
DUAL ASPECT

4 BR  
DUAL ASPECT

3 BR  
DUAL ASPECT  
CORNER



ROYAL ATLANTIS VIEWS

DUBAI MARINA VIEWS

### LEVEL 08 FLOOR PLAN



3 BEDROOM DUAL ASPECT  
CORNER APARTMENTS



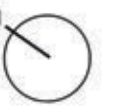
4 BEDROOM DUAL  
ASPECT APARTMENTS



6 BEDROOM DUAL  
ASPECT APARTMENT

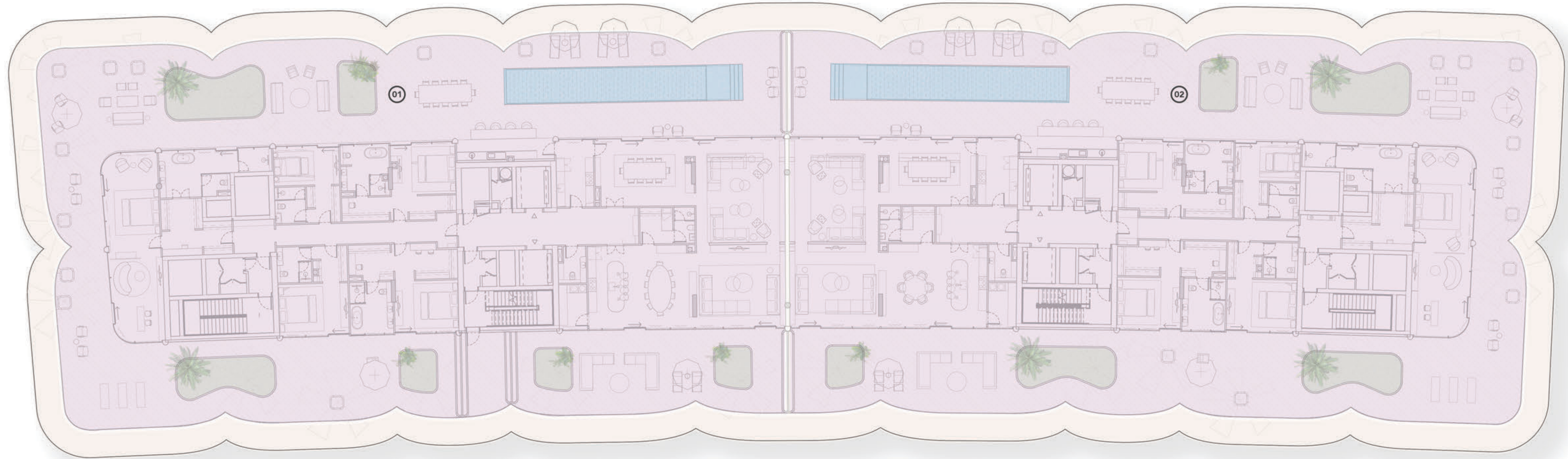
DOWNTOWN DUBAI VIEWS

BURJ AL ARAB VIEWS



PENTHOUSE  
TYPE 01

PENTHOUSE  
TYPE 02



ROYAL ATLANTIS VIEWS

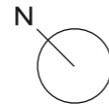
DUBAI MARINA VIEWS

### LEVEL 09 FLOOR PLAN

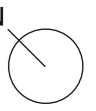


PENTHOUSES

2 BEDROOM SINGLE ASPECT



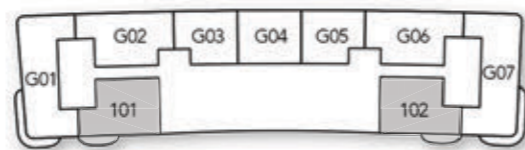
2 BEDROOM SINGLE ASPECT  
TYPE A



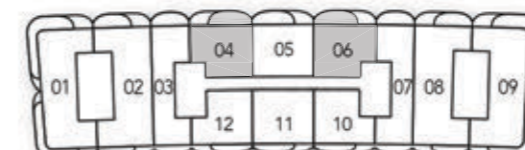
Internal Living Area	Outdoor Living Area	Total Living Area
1895.42 sq.ft	153.82 sq.ft	2049.23

Internal Living Area	Outdoor Living Area	Total Living Area
1519.22 sq.ft	266.62 sq.ft	1785.84 sq.ft

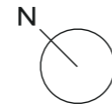
1<sup>st</sup> Floor



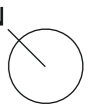
2<sup>nd</sup> Floor - 7<sup>th</sup> Floor



2 BEDROOM SINGLE ASPECT  
TYPE B



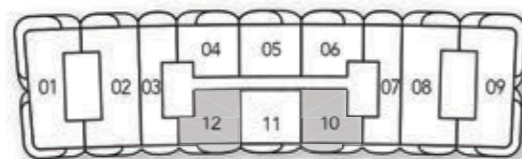
2 BEDROOM SINGLE ASPECT  
TYPE C



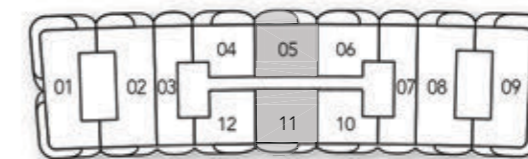
Internal Living Area	Outdoor Living Area	Total Living Area
1470.78 sq.ft	171.47 sq.ft	1642.25 sq.ft

Internal Living Area	Outdoor Living Area	Total Living Area
1665.28 sq.ft	261.67 sq.ft	1926.95 sq.ft

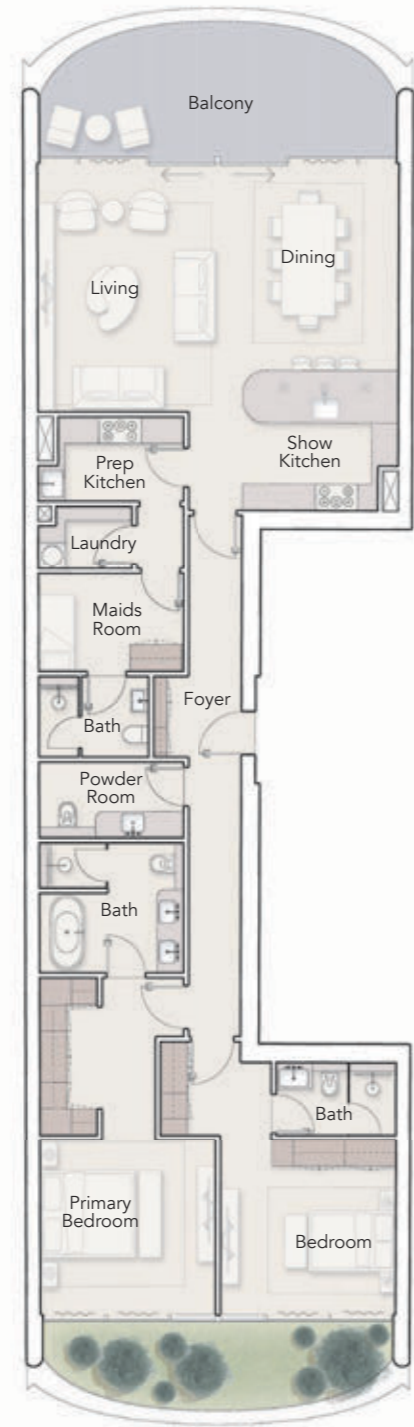
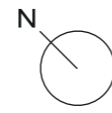
2<sup>nd</sup> Floor - 7<sup>th</sup> Floor



2<sup>nd</sup> Floor - 7<sup>th</sup> Floor



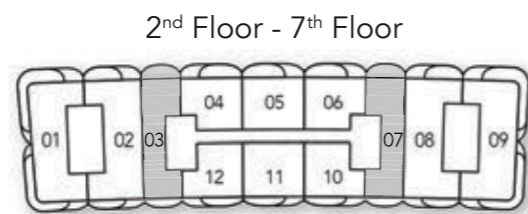
2 BEDROOM DUAL ASPECT



Internal Living Area  
1879.27 sq.ft

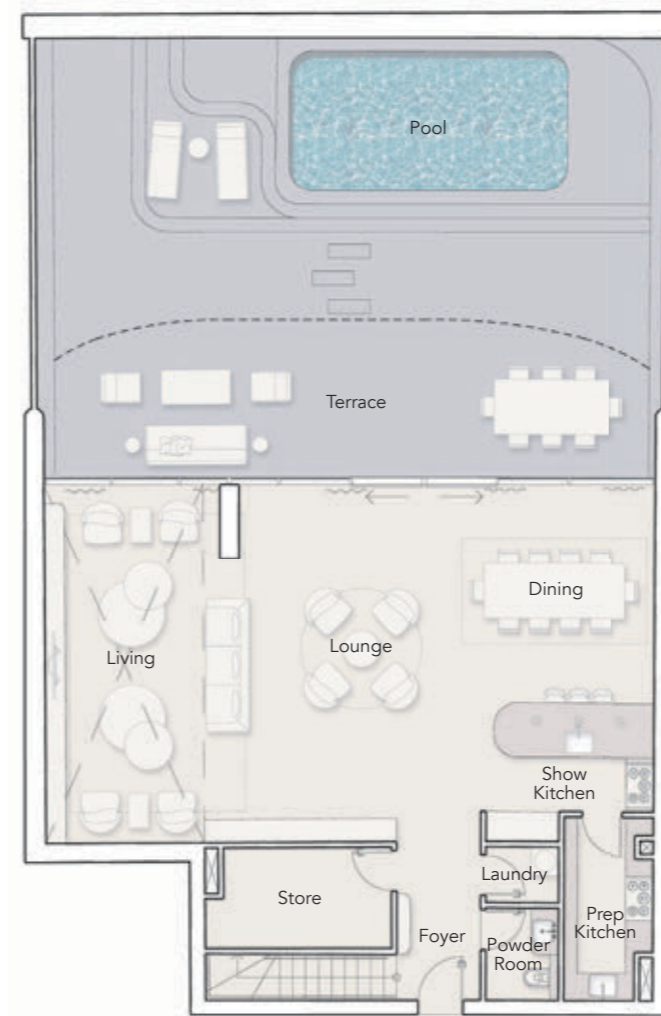
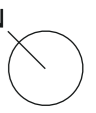
Outdoor Living Area  
238.96 sq.ft

Total Living Area  
2118.23 sq.ft



2<sup>nd</sup> Floor - 7<sup>th</sup> Floor

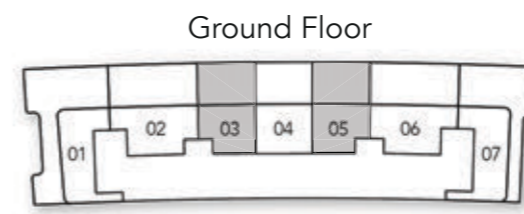
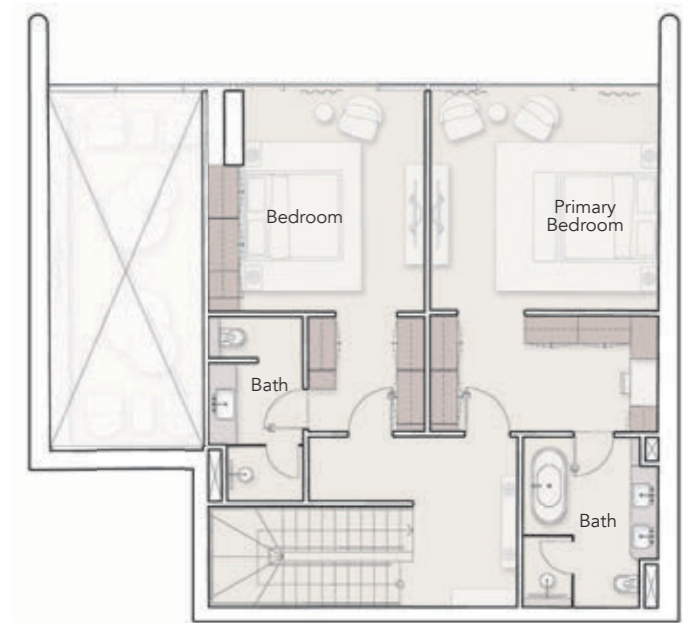
2 BEDROOM DUPLEX



Internal Living Area  
2770.41 sq.ft

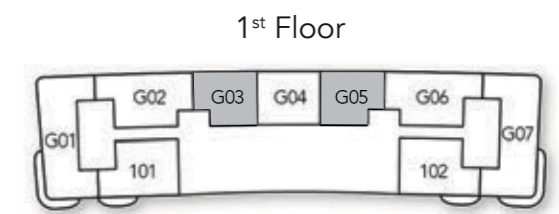
Outdoor Living Area  
1443.44 sq.ft

Total Living Area  
4213.85 sq.ft



Ground Floor

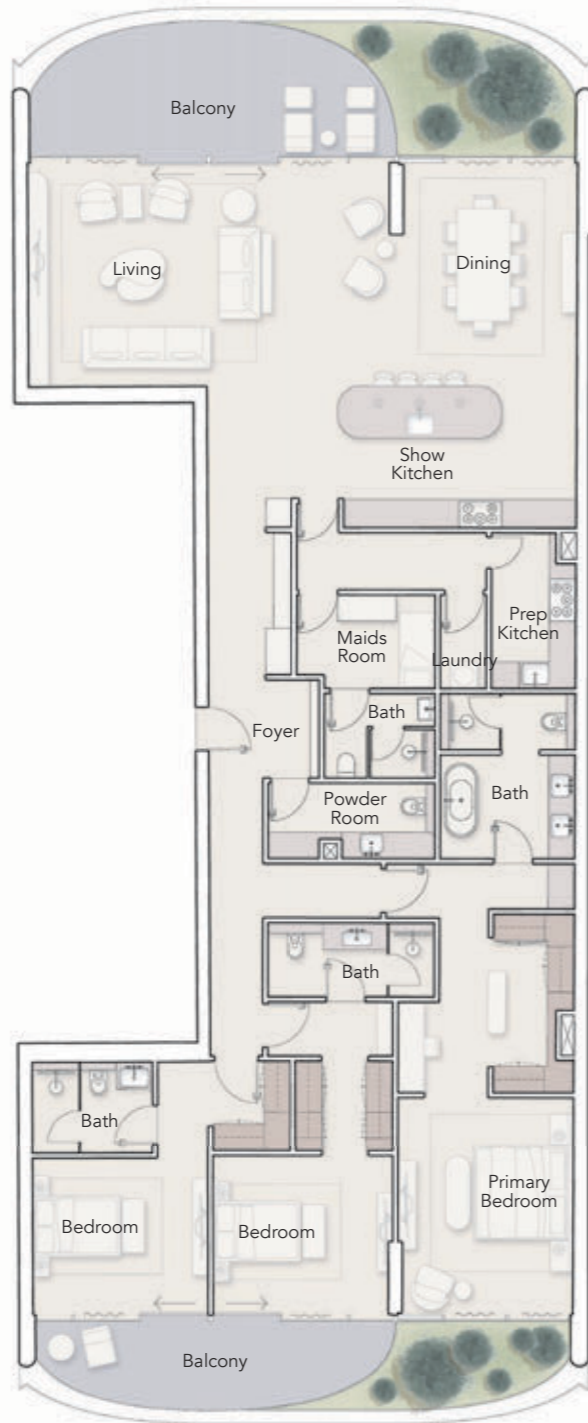
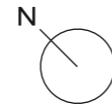
Lower Level



1<sup>st</sup> Floor

Upper Level

3 BEDROOM DUAL ASPECT

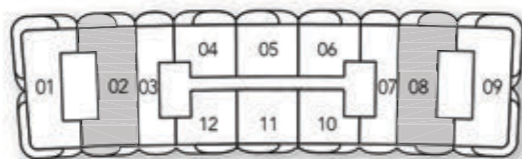


Internal Living Area  
2841.02 sq.ft

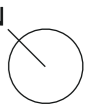
Outdoor Living Area  
392.56 sq.ft

Total Living Area  
3233.58 sq.ft

2<sup>nd</sup> Floor - 7<sup>th</sup> Floor



3 BEDROOM DUAL ASPECT  
CORNER UNIT

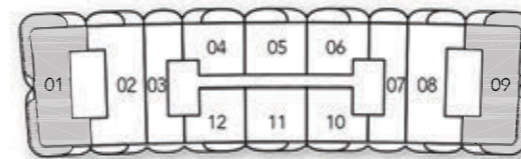


Internal Living Area  
2634.46 sq.ft

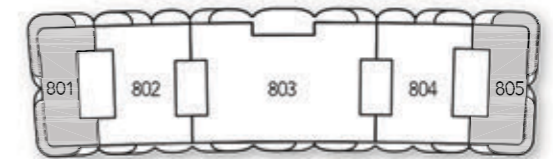
Outdoor Living Area  
897.49 sq.ft

Total Living Area  
3531.96 sq.ft

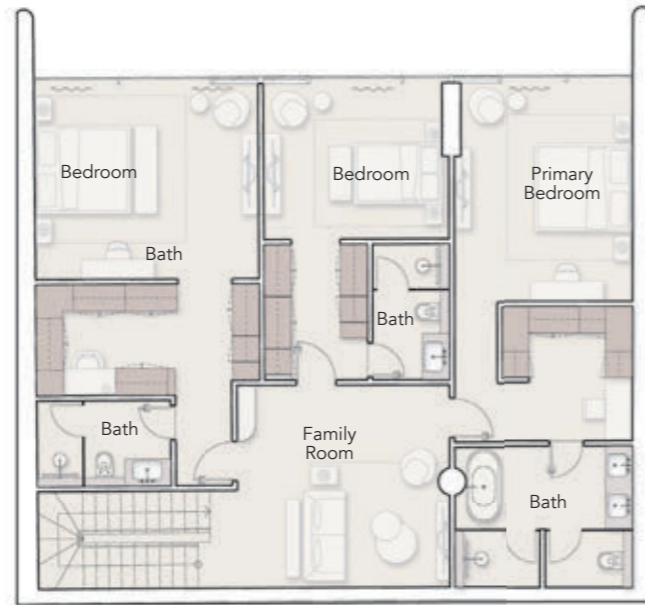
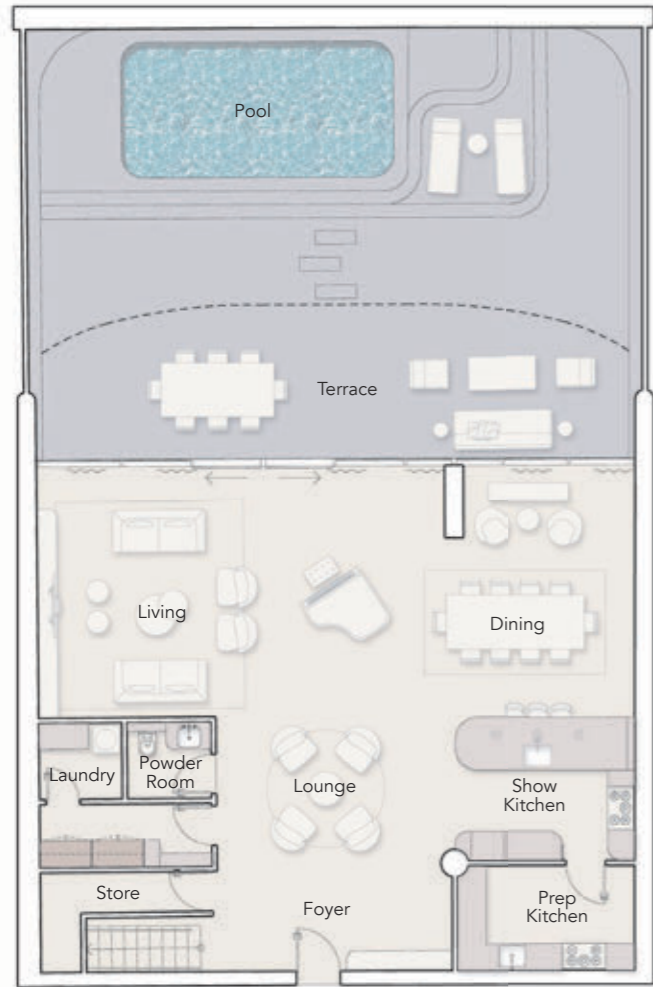
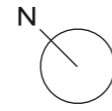
2<sup>nd</sup> Floor - 7<sup>th</sup> Floor



8<sup>th</sup> Floor

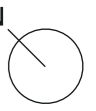


### 3 BEDROOM DUPLEX



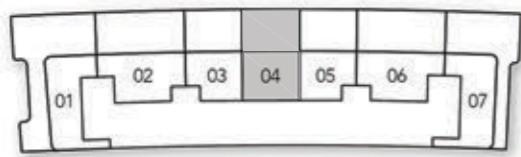
Internal Living Area	Outdoor Living Area	Total Living Area
3325.94 sq.ft	1443.98 sq.ft	4769.91 sq.ft

### 4 BEDROOM DUAL ASPECT



Internal Living Area	Outdoor Living Area	Total Living Area
4720.83 sq.ft	631.52 sq.ft	5352.35 sq.ft

Ground Floor



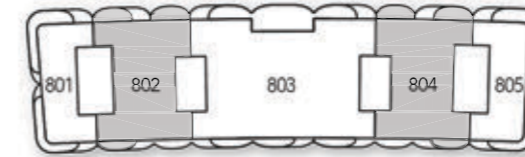
Lower Level

1st Floor

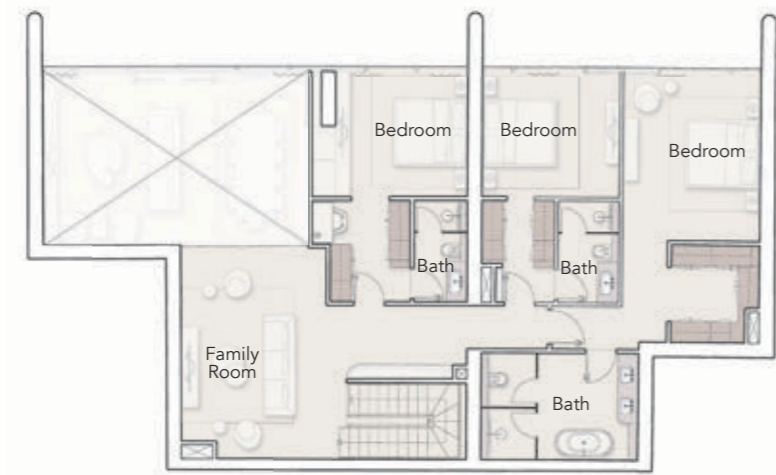
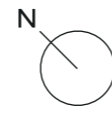


Upper Level

8th Floor



# 4 BEDROOM DUPLEX



Internal Living Area

3909.45 sq.ft

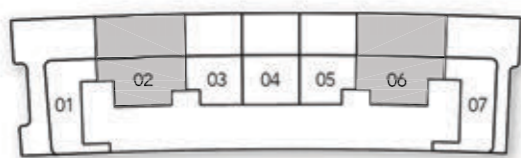
Outdoor Living Area

2230.28 sq.ft

Total Living Area

6139.73 sq.ft

Ground Floor



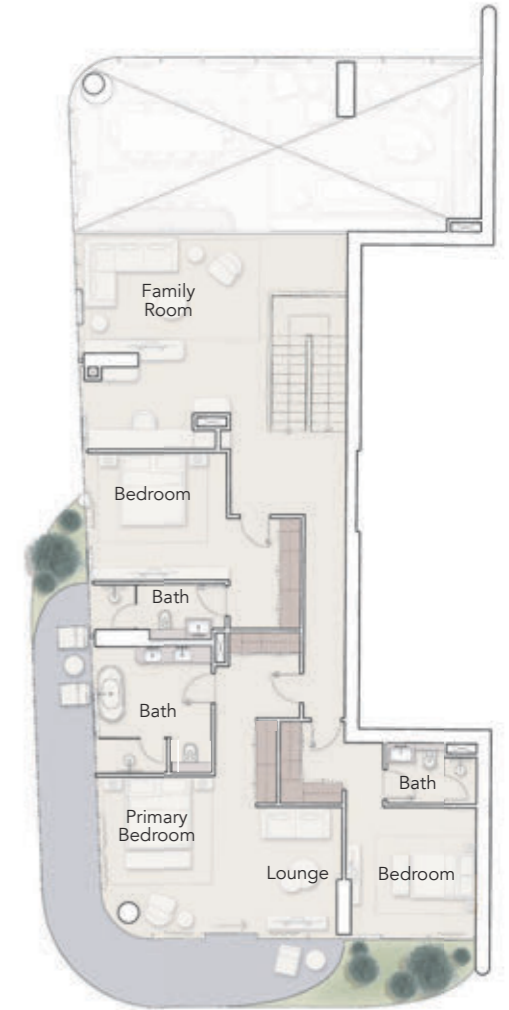
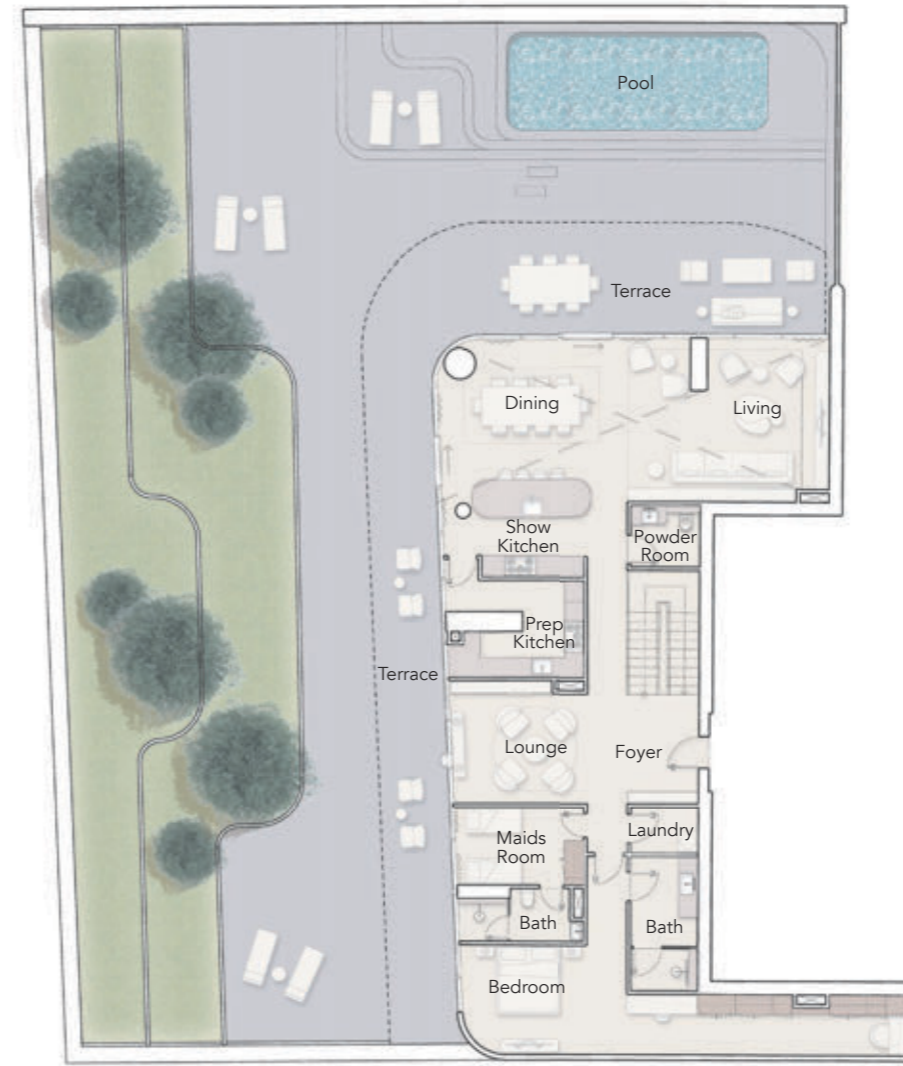
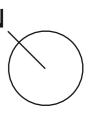
Lower Level

1<sup>st</sup> Floor



Upper Level

# 4 BEDROOM DUPLEX CORNER UNIT



Internal Living Area

4207.29 sq.ft

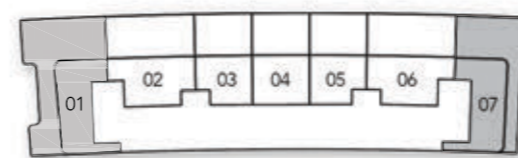
Outdoor Living Area

5710.03 sq.ft

Total Living Area

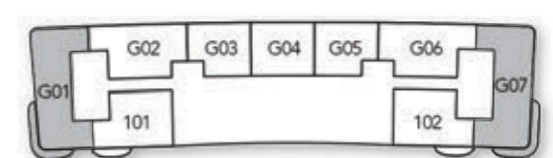
9917.32 sq.ft

Ground Floor



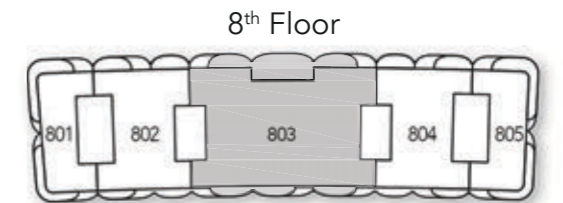
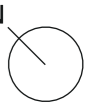
Lower Level

1<sup>st</sup> Floor



Upper Level

PRESIDENTIAL SUITE  
6 BEDROOM DUAL ASPECT

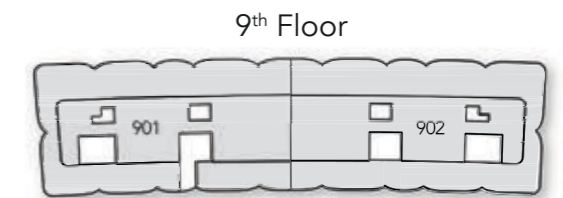
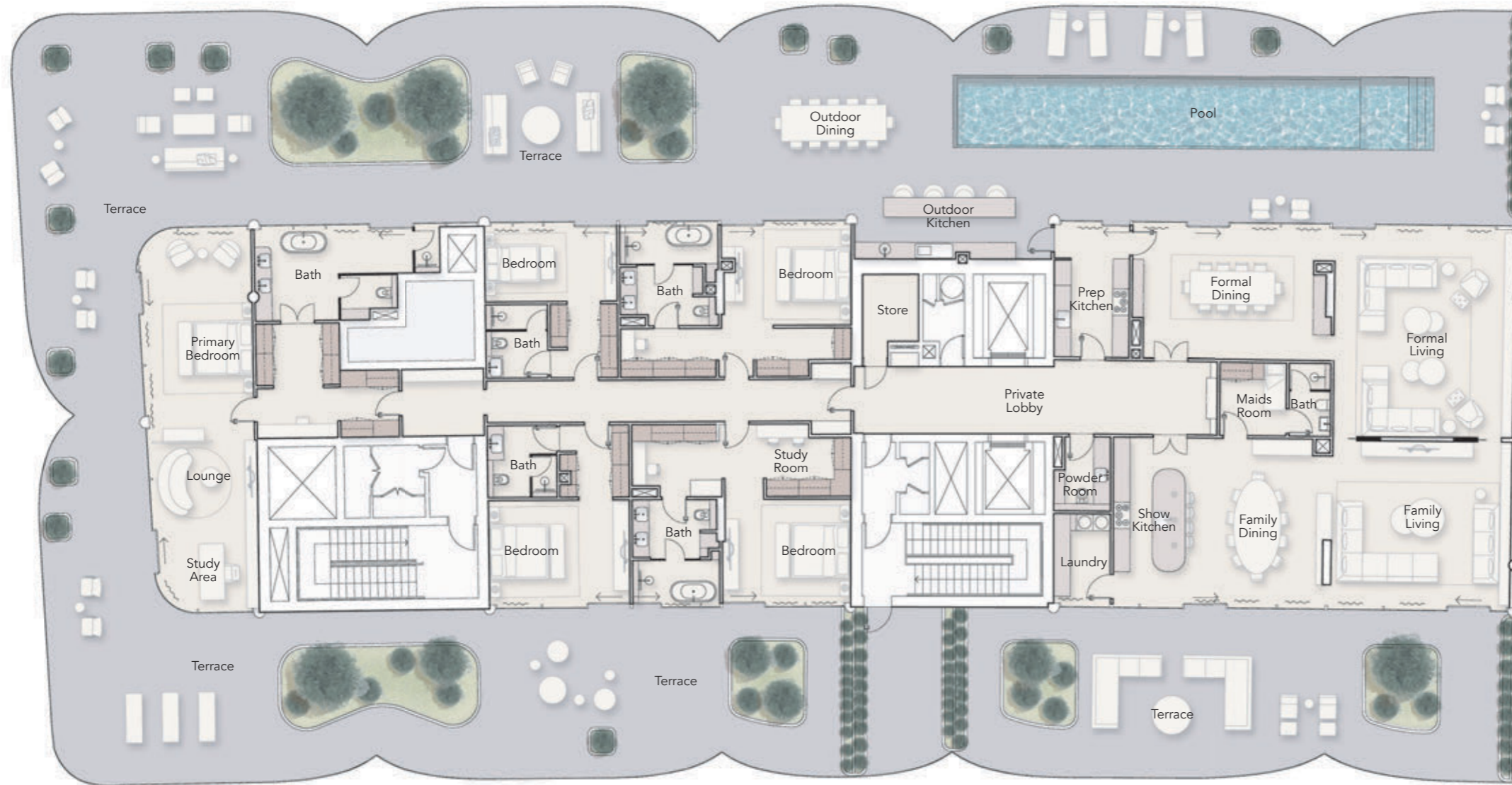
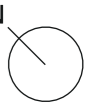


Internal Living Area  
9917.32 sq.ft

Outdoor Living Area  
1852.79 sq.ft

Total Living Area  
11770.11 sq.ft

PENTHOUSE  
5 BEDROOM CORNER ASPECT



Internal Living Area	Outdoor Living Area	Total Living Area
5952.97 sq.ft	8083.90 sq.ft	14036.88 sq.ft



  
**ELLINGTON**  
PROPERTIES

LIVE IN DESIGN

800 8288  
[info@ellingtongroup.com](mailto:info@ellingtongroup.com)

ELLINGTONPROPERTIES.AE

The renderings and visualizations contained in this brochure are provided for illustrative and marketing purposes. While the information provided is believed to be accurate and reliable at the time of printing, only the information contained in the final Sales and Purchase Agreement will have any legal effect.