



W3

WEYBRIDGE  
GARDENS 3

T H E A L P S



## INSPIRED DESIGNS

From architecture and interior design to communal living spaces, Weybridge Gardens 3, The Alps has been carefully crafted with a distinct narrative and design ethos in mind.

Effortlessly blending the serene alpine aesthetic of France and Switzerland with the modern, vibrant landscape of Dubai, we have created a harmonious living experience that appeals to both the heart and the mind.

The contemporary residential development offers striking architectural geometry with feature arches and vertical elements, drawing inspiration from snow melting on the peaks of the alpine mountains and iconic balcony designs that add a dynamic flair.

*Embracing nature's elegance &  
architectural innovation.*





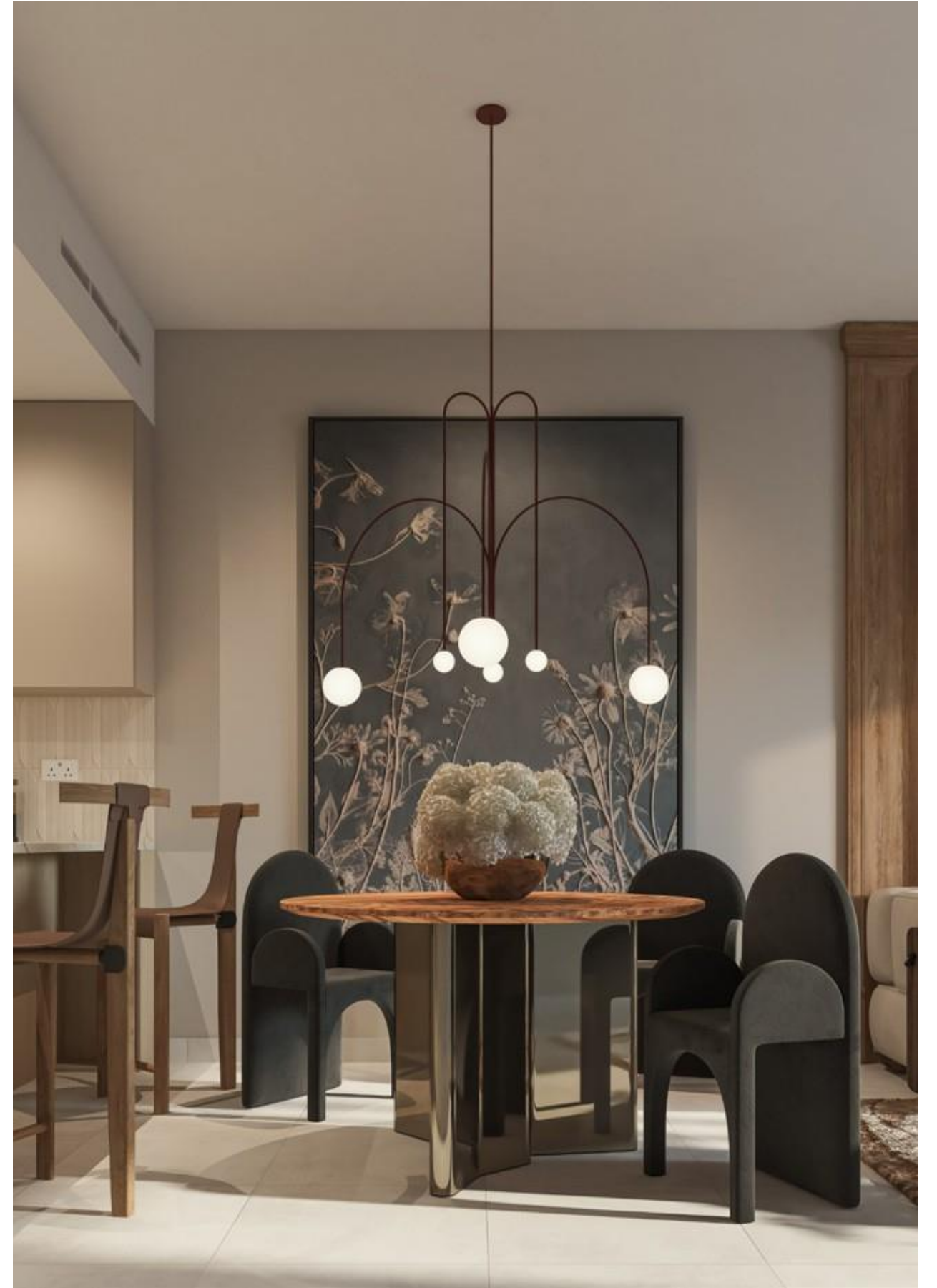
## YOUR HOME IN DUBAILAND

Dubailand spans three million square feet and is essentially a city within a city, offering a vibrant mix of districts and attractions within close proximity.

From theme parks to shopping malls and residential communities, Dubailand epitomises contemporary urban living, providing a dynamic and enriched lifestyle.

What's more, residents enjoy an abundance of world-class education and medical facilities within easy reach.

Dubailand will soon benefit from direct access to the Dubai Metro blue line to offer seamless connectivity to all areas of the city.



# BEAUTIFULLY CRAFTED INTERIORS

Our team went above and beyond to create beautiful interiors which bring the cosiness and calm associated with mountainside log cabins in The Alps to Dubai.

Contemporary and chic, all properties are designed and built to exacting quality standards and every detail has been meticulously crafted to offer luxury and comfort across all interior and exterior living spaces.

All apartments enjoy sunny terraces and one and three bedroom properties feature their own private plunge pool.



# LOCATION

Weybridge Gardens 3 is your gateway to modern living and convenience in Dubailand.

Weybridge Gardens 3, The Alps is ideally situated, just off Sheikh Mohammed Bin Zayed Road, offering good accessibility and excellent connectivity to all areas of the city.

- |   |  |
|---|--|
| 1 AL HABTOOR POLO RESORT<br>10 minutes        | 10 DXB AIRPORT<br>28 minutes             |
| 2 IMG WORLDS OF ADVENTURE<br>12 minutes       | 11 BURJ AL ARAB / JUMEIRAH<br>30 minutes |
| 3 GLOBAL VILLAGE<br>14 minutes                | 12 DUBAI MARINA<br>32 minutes            |
| 4 DUBAI INTERNATIONAL AIRPORT<br>22 minutes   | 13 THE PALM JUMEIRAH<br>33 minutes       |
| 5 DOWNTOWN DUBAI & BURJ KHALIFA<br>22 minutes |  |
| 6 DUBAI MALL<br>22 minutes                    |  |
| 7 DIFC<br>22 minutes                          |  |
| 8 DUBAI FRAME<br>22 minutes                   |  |
| 9 MALL OF THE EMIRATES<br>25 minutes          |  |







# ROOF TOP LIVING

Residents will enjoy a gorgeous rooftop swimming pool, perfect for both adults and children. The pool is climate controlled which means it can be used 365 days a year. Surrounded by a lovely deck area with sunbeds, shaded cabanas and in-water loungers, the rooftop is the perfect place to take a dip or a leisurely swim and enjoy a variety of amenities.



# A WORLD OF AMENITIES

The rooftop level is a lifestyle and leisure hub, featuring a state-of-the-art gymnasium, a dedicated boxing and dance academy, an outdoor cinema, a barbecue area, a pizza bar and relaxed outdoor seating areas.

These world-class amenities offer residents unlimited opportunities for relaxation and entertainment in a vibrant community where every moment is infused with joy and tranquility.

