



W3

WEYBRIDGE  
GARDENS 3

T H E A L P S

# UNIT 17 STUDIO

TYPICAL UNIT TYPE 01



# UNIT 18 STUDIO

TYPICAL UNIT TYPE 02



## TOTAL AREA

488.14 SQ.FT.    45.35 SQ.M.

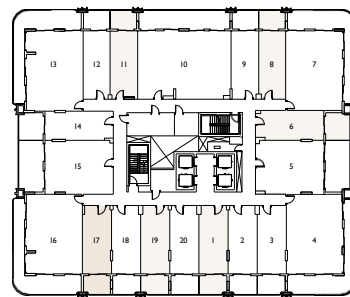
## TOTAL INTERNAL AREA

377.28 SQ.FT.    35.05 SQ.M.

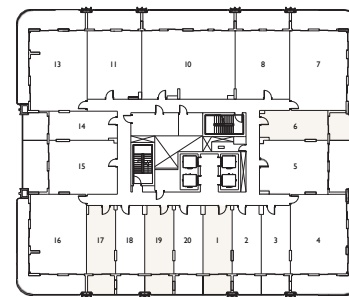
## TOTAL EXTERNAL AREA

110.87 SQ.FT.    10.30 SQ.M.

LEVELS 1 - 5  
FL OOR PL ATE



LEVELS 6 - 11  
FL OOR PL ATE



\*Indicative floor plate shows the actual unit in dark beige and typical units of the same type in light beige.

\*\*All drawings and dimensions are approximate. Drawings are not to scale and are subject to change without notice. The developer reserves the right to make revisions. The units are measured as a typical floor in the building and columns may vary in size depending on the floor level. The furnishings and accessories shown are for representation purposes only. The length and width of the unit and balcony varies depending on the floor and orientation, in line with building authority regulations and compliance.

## TOTAL AREA

488.14 SQ.FT.    45.35 SQ.M.

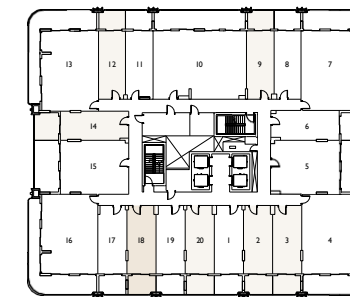
## TOTAL INTERNAL AREA

377.28 SQ.FT.    35.05 SQ.M.

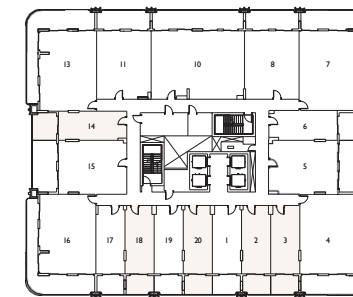
## TOTAL EXTERNAL AREA

110.87 SQ.FT.    10.30 SQ.M.

LEVELS 1 - 5  
FL OOR PL ATE



LEVELS 6 - 11  
FL OOR PL ATE



\*Indicative floor plate shows the actual unit in dark beige and typical units of the same type in light beige.

\*\*All drawings and dimensions are approximate. Drawings are not to scale and are subject to change without notice. The developer reserves the right to make revisions. The units are measured as a typical floor in the building and columns may vary in size depending on the floor level. The furnishings and accessories shown are for representation purposes only. The length and width of the unit and balcony varies depending on the floor and orientation, in line with building authority regulations and compliance.

# UNIT 05

# 1 BEDROOM

TYPICAL UNIT TYPE 01



# UNIT 08

# 1 BEDROOM

TYPICAL UNIT TYPE 02



## TOTAL AREA

946.69 SQ.FT.    87.95 SQ.M.

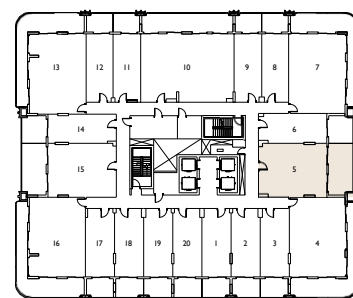
## TOTAL INTERNAL AREA

689.97 SQ.FT.    64.10 SQ.M.

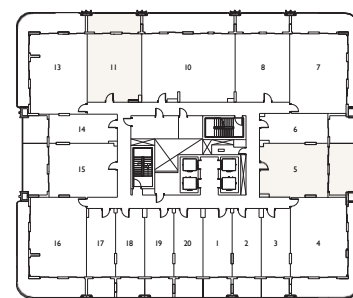
## TOTAL EXTERNAL AREA

256.72 SQ.FT.    23.85 SQ.M.

LEVELS 1 - 5  
FL OOR PL ATE



LEVELS 6 - 11  
FL OOR PL ATE



\*Indicative floor plate shows the actual unit in dark beige and typical units of the same type in light beige.

\*\*All drawings and dimensions are approximate. Drawings are not to scale and are subject to change without notice. The developer reserves the right to make revisions. The units are measured as a typical floor in the building and columns may vary in size depending on the floor level. The furnishings and accessories shown are for representation purposes only. The length and width of the unit and balcony varies depending on the floor and orientation, in line with building authority regulations and compliance.

## TOTAL AREA

930.43 SQ.FT.    86.44 SQ.M.

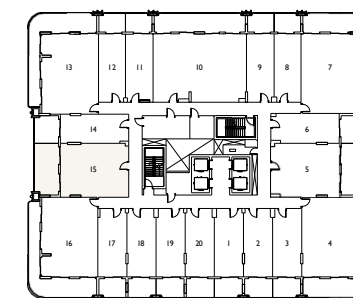
## TOTAL INTERNAL AREA

720.00 SQ.FT.    66.89 SQ.M.

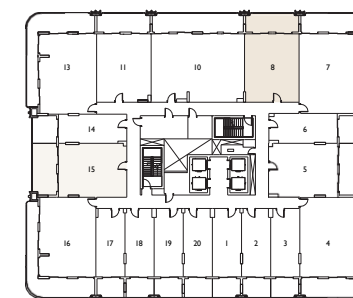
## TOTAL EXTERNAL AREA

210.43 SQ.FT.    19.55 SQ.M.

LEVELS 1 - 5  
FL OOR PL ATE



LEVELS 6 - 11  
FL OOR PL ATE



\*Indicative floor plate shows the actual unit in dark beige and typical units of the same type in light beige.

\*\*All drawings and dimensions are approximate. Drawings are not to scale and are subject to change without notice. The developer reserves the right to make revisions. The units are measured as a typical floor in the building and columns may vary in size depending on the floor level. The furnishings and accessories shown are for representation purposes only. The length and width of the unit and balcony varies depending on the floor and orientation, in line with building authority regulations and compliance.

# UNIT 04

## 3 BEDROOM

TYPICAL UNIT TYPE 01



# UNIT 16

## 3 BEDROOM

TYPICAL UNIT TYPE 02



### TOTAL AREA

1319.33 SQ.FT.    122.57 SQ.M.

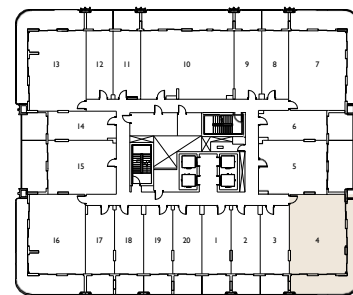
### TOTAL INTERNAL AREA

890.07 SQ.FT.    82.69 SQ.M.

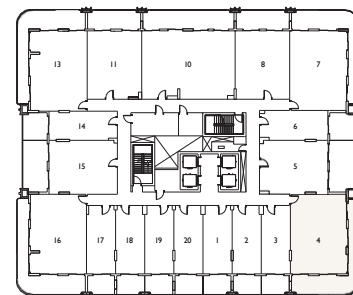
### TOTAL EXTERNAL AREA

429.26 SQ.FT.    39.88 SQ.M.

LEVELS 1 - 5  
FL OOR PL ATE



LEVELS 6 - 11  
FL OOR PL ATE



\*Indicative floor plate shows the actual unit in dark beige and typical units of the same type in light beige.

\*\*All drawings and dimensions are approximate. Drawings are not to scale and are subject to change without notice. The developer reserves the right to make revisions. The units are measured as a typical floor in the building and columns may vary in size depending on the floor level. The furnishings and accessories shown are for representation purposes only. The length and width of the unit and balcony varies depending on the floor and orientation, in line with building authority regulations and compliance.

### TOTAL AREA

1326.97 SQ.FT.    123.28 SQ.M.

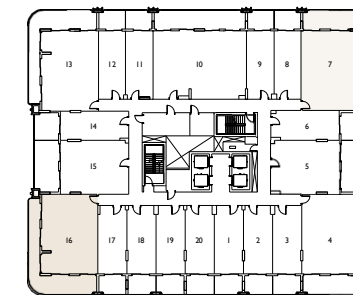
### TOTAL INTERNAL AREA

890.61 SQ.FT.    82.74 SQ.M.

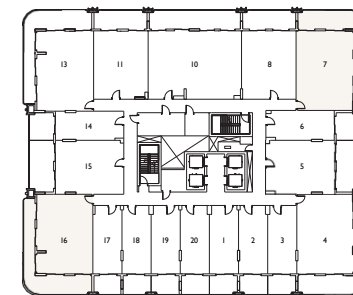
### TOTAL EXTERNAL AREA

436.37 SQ.FT.    40.54 SQ.M.

LEVELS 1 - 5  
FL OOR PL ATE



LEVELS 6 - 11  
FL OOR PL ATE



\*Indicative floor plate shows the actual unit in dark beige and typical units of the same type in light beige.

\*\*All drawings and dimensions are approximate. Drawings are not to scale and are subject to change without notice. The developer reserves the right to make revisions. The units are measured as a typical floor in the building and columns may vary in size depending on the floor level. The furnishings and accessories shown are for representation purposes only. The length and width of the unit and balcony varies depending on the floor and orientation, in line with building authority regulations and compliance.

# UNIT 13 3 BEDROOM

TYPICAL UNIT TYPE 03



# UNIT 10 3 BEDROOM

TYPICAL UNIT TYPE 04



## TOTAL AREA

1322.24 SQ.FT. 122.84 SQ.M.

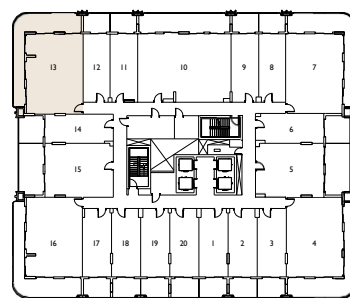
## TOTAL INTERNAL AREA

890.50 SQ.FT. 82.73 SQ.M.

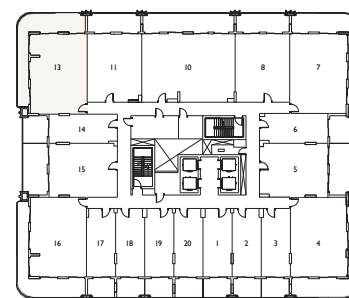
## TOTAL EXTERNAL AREA

431.74 SQ.FT. 40.11 SQ.M.

LEVELS 1 - 5  
FL OOR PL ATE



LEVELS 6 - 11  
FL OOR PL ATE



\*Indicative floor plate shows the actual unit in dark beige and typical units of the same type in light beige.

\*\*All drawings and dimensions are approximate. Drawings are not to scale and are subject to change without notice. The developer reserves the right to make revisions. The units are measured as a typical floor in the building and columns may vary in size depending on the floor level. The furnishings and accessories shown are for representation purposes only. The length and width of the unit and balcony varies depending on the floor and orientation, in line with building authority regulations and compliance.

## TOTAL AREA

1569.59 SQ.FT. 145.82 SQ.M.

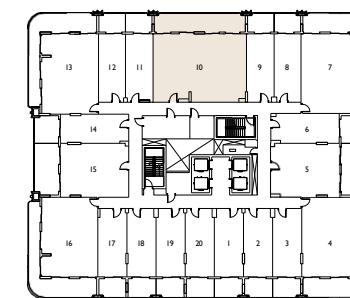
## TOTAL INTERNAL AREA

1213.95 SQ.FT. 112.78 SQ.M.

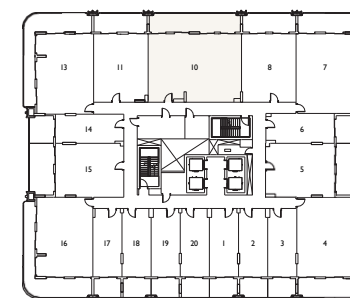
## TOTAL EXTERNAL AREA

355.64 SQ.FT. 33.04 SQ.M.

LEVELS 1 - 5  
FL OOR PL ATE



LEVELS 6 - 11  
FL OOR PL ATE



\*Indicative floor plate shows the actual unit in dark beige and typical units of the same type in light beige.

\*\*All drawings and dimensions are approximate. Drawings are not to scale and are subject to change without notice. The developer reserves the right to make revisions. The units are measured as a typical floor in the building and columns may vary in size depending on the floor level. The furnishings and accessories shown are for representation purposes only. The length and width of the unit and balcony varies depending on the floor and orientation, in line with building authority regulations and compliance.



# AMENITIES

- A lobby
- A co-working space
- A swimming pool
- Cabanas
- Sunken pool loungers
- Outdoor seating areas
- Changing rooms
- Saunas
- An outdoor cinema
- A fully-equipped gymnasium
- A zen garden with water feature
- An urban farm
- A pizzeria
- A BBQ area
- LEOS Davinci Art Academy
- LEOS Dance Studio
- LEOS Boxing Academy
- Concierge by LEOS app
- 24hr security

