

# *floareá* *Oasis*

THE ARCHITECTS OF LIVING EXCELLENCE



MASHRIQ ELITE  
DEVELOPMENTS



# Table of Contents

---

---

Heart of Dubailand	05
About Mashriq Elite Developments	07
About Floareá Oasis	09
Key Features	11
Typical Floor Plan	12
Interior that Echos Prestige	14
Amenities Designed for the Moder Lifestyle	29
Strategically Located	35
Our Upcoming Chapter	41
Al Mashriq Group	43

# Contents





# Welcome Home to the Heart of Dubailand

---

Nestled in the heart of Dubai, Dubailand is a vibrant community that promises a unique blend of excitement and tranquility. Known for its stunning landscapes and family-friendly attractions, this sought-after location offers residents a lifestyle enriched with leisure and adventure. With easy access to world-class entertainment, shopping, and dining options, Dubailand is the location for those who seek the best of both worlds.



MASHRIQ ELITE  
DEVELOPMENTS

About  
*Floarea  
Oasis*

---

Introducing Floarea Oasis, a remarkable new project that redefines modern living in a beautifully designed community. Strategically located in Dubailand, it places you just moments away from essential amenities, including parks, shopping malls, and schools within the community.

Each spacious apartment is thoughtfully designed to maximize natural light and modern comforts, creating an inviting sanctuary where you can truly feel at home. Experience a life of luxury, convenience, and joy at Floarea Oasis!

Rising majestically across **13 floors**, this distinguished development features **257 beautifully appointed residences**, including **studio, 1-bedroom, and 2-bedroom apartments**, making this project an ideal retreat for modern living.



# MASHRIQ ELITE

— DEVELOPMENTS —



# Developing *Elite* Lifestyles

---

## About The Developer

True luxury begins with intention and that's where Mashriq Elite Developers stands apart. Every space is a reflection of refined aesthetics, modern functionality, and a deep understanding of how people truly live. The commitment goes beyond construction, it's about delivering trust through timeless design, curated amenities, and seamless living experiences. With a vision rooted in quality and a reputation shaped by integrity, Mashriq stands for a new era of elevated urban living.

Reside in the  
Splendor of Your  
Aspirations

---





Your Haven Amidst  
*Urban Dreamscape*

Studio, 1 & 2 Bedroom Apartments

# The Key Features of Floarea Oasis

---

- ◆ **Strategic Location:** Perfectly positioned in Dubai Land, offering seamless connectivity to key landmarks and lifestyle destinations.
- ◆ **Convenient Access:** Four high-speed elevators ensure effortless movement across all floors for residents and guests alike.
- ◆ **Designer Lobby:** An elegantly curated arrival space that blends contemporary design with timeless charm.
- ◆ **Spacious Apartments:** Thoughtfully designed layouts offering generous proportions for comfortable, modern living.
- ◆ **Spacious Balconies:** Expansive outdoor spaces that invite natural light and mesmerizing views.
- ◆ **Hightened Glass Windows:** Floor-to-ceiling windows that frame the outdoors while enhancing light and space indoors.
- ◆ **Italian Tile Flooring:** Sophisticated, high-quality Italian tiles that bring understated luxury underfoot.
- ◆ **European-branded wood finishes and appliances.** Premium European craftsmanship reflected in every finish and appliance for a refined living experience.
- ◆ **Designer Interiors:** Every corner thoughtfully finished to balance visual appeal with everyday functionality.
- ◆ **Fully Fitted Kitchens:** State-of-the-art appliances and sleek fittings designed for both ease and elegance in culinary moments.
- ◆ **Feature Walls:** Artfully designed wall accents that lend character and depth to your interiors.
- ◆ **Consoles:** Bespoke designer consoles and dresser console that add both functionality and aesthetic appeal to every apartment.
- ◆ **Exceptional Amenities:** Two floors of thoughtfully curated lifestyle spaces to enrich your everyday.
- ◆ **Smart Home System with ALEXA Voice Assistant:** Integrated smart features offering intuitive control and modern convenience at your command.
- ◆ **ANPR Car Parking System:** A seamless, number plate recognition parking solution for hassle-free entry and exit.



MASHRIQ ELITE  
DEVELOPMENTS

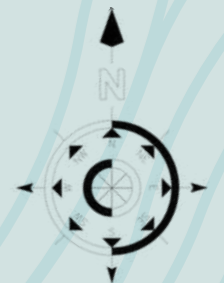
*floareșă*  
*Jasis*

# Typical Floor Plan



**Disclaimer:**

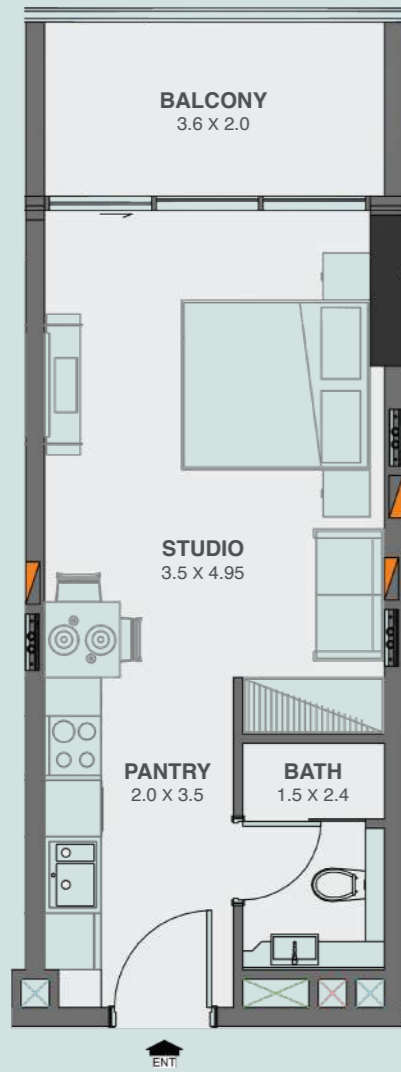
All pictures, plans, layouts, information, data, dimensions and details included in this floor plan are indicative only and may change at any time up to the final 'as built' status in accordance with final designs of the project, regulatory approvals and planning permissions.



**800 MASHRIQ**  
**62 74 747**

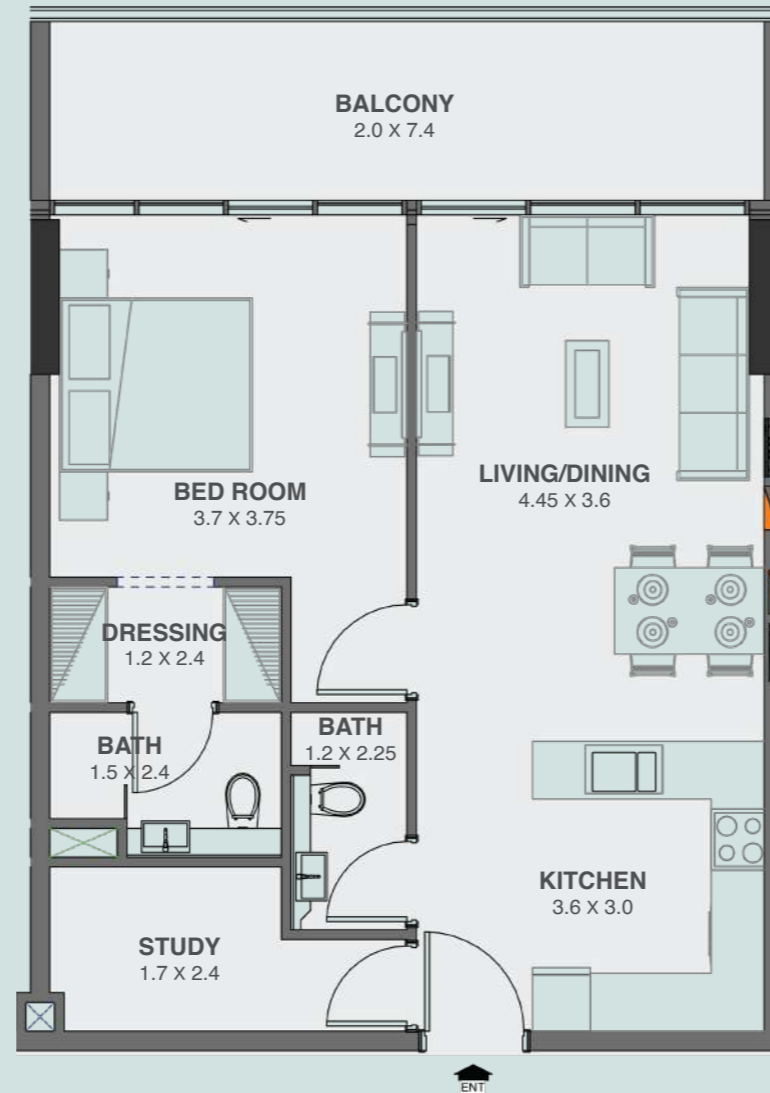
sales@mashriqelite.com  
www.mashriqelite.com

# Studio



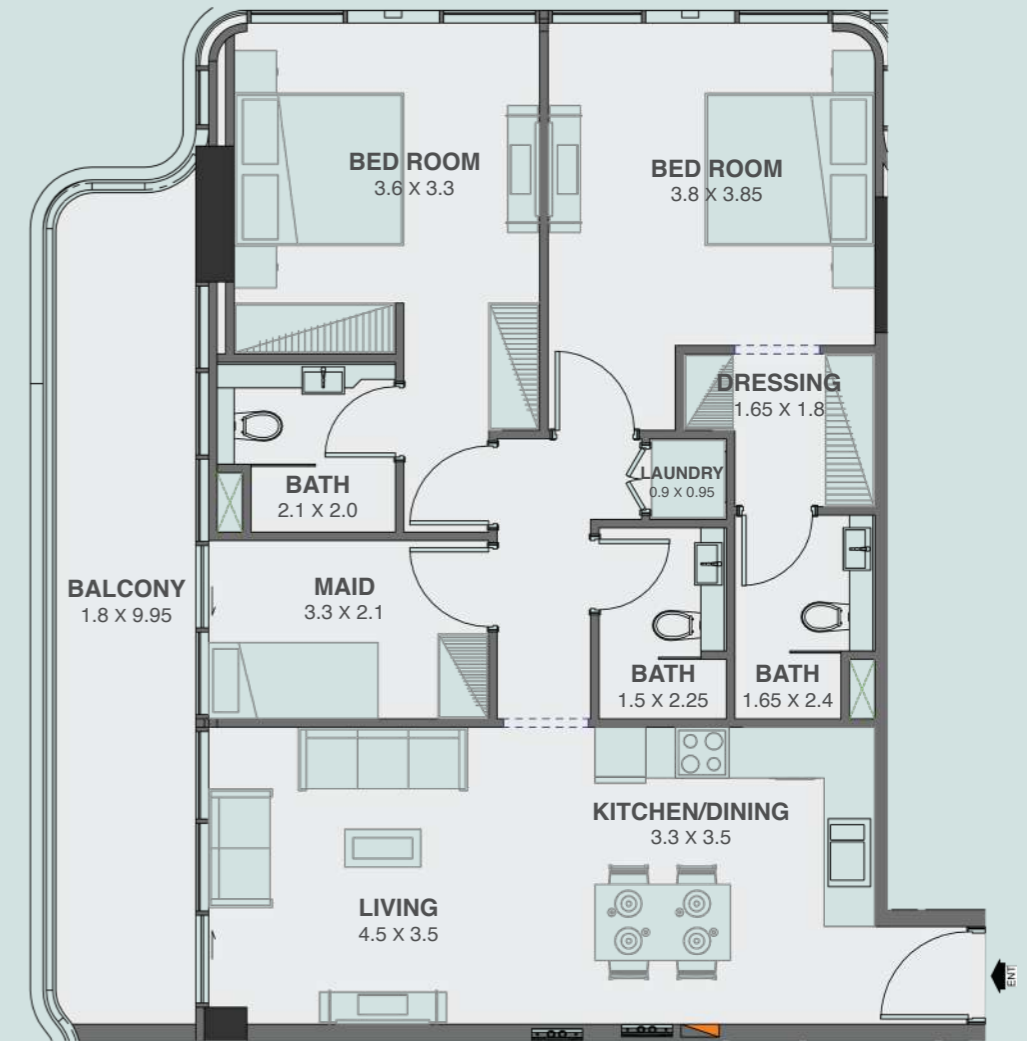
SUITE AREA	344.66 SQ.FT
TERRACE AREA	80.62 SQ.FT
TOTAL AREA	425.28 SQ.FT

# 1 BHK



SUITE AREA	703.50 SQ.FT
TERRACE AREA	161.00 SQ.FT
TOTAL AREA	864.50 SQ.FT

# 2 BHK



SUITE AREA	1039.15 SQ.FT
TERRACE AREA	197.00 SQ.FT
TOTAL AREA	1236.15 SQ.FT

**800 MASHRIQ**  
**62 74 747**

sales@mashriqelite.com  
www.mashriqelite.com

**Disclaimer:**

All pictures, plans, layouts, information, data, dimensions and details included in this floor plan are indicative only and may change at any time up to the final 'as built' status in accordance with final designs of the project, regulatory approvals and planning permissions.

Interiors  
That Echoes  
*Prestige*

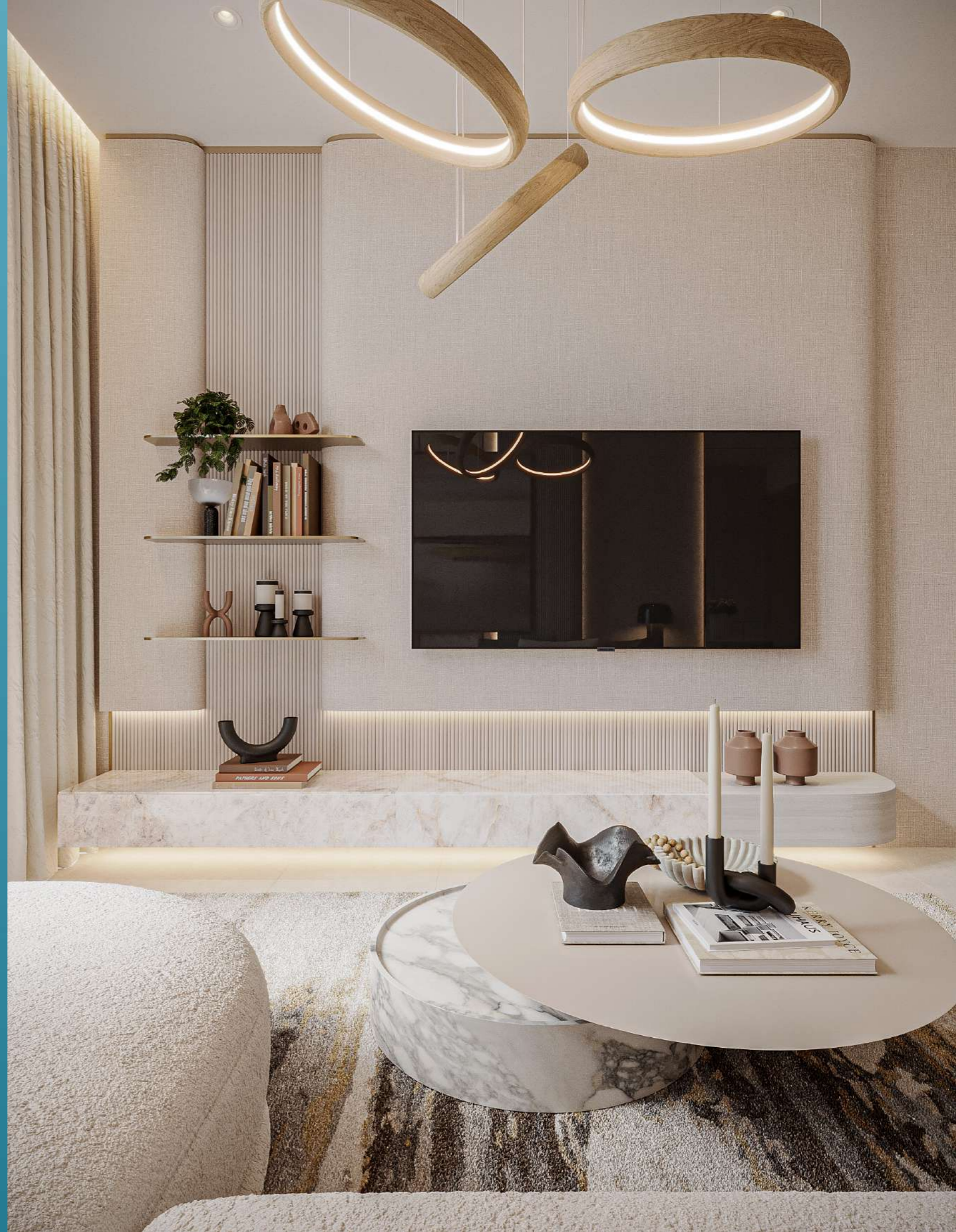






# Bespoke Living Area

Step into our bespoke living area, where every detail is thoughtfully curated to reflect your unique style. Experience the art of living in a design that speaks to your individuality and taste.





# Contemporary Kitchen

Designed for both functionality and style, this space features sleek finishes and innovative appliances that inspire creativity and efficiency. Enjoy preparing meals in an inviting environment that seamlessly blends modern aesthetics with practicality.





# Calm Study Room

The Study Room offers a quiet, focused environment perfect for work, study, or personal projects. With comfortable seating, ample lighting, and a well-organized layout, it provides the ideal space for productivity.





# Peaceful Bedroom

With an inviting ambiance that promotes peace and comfort, our bedrooms provide the perfect escape from the hustle and bustle of daily life. Embrace restful nights and peaceful mornings in a space that reflects your style and serenity.





# Pristine Bathroom

Discover our serene bathroom, a retreat designed to evoke peace and relaxation. This thoughtfully designed space combines modern aesthetics with a calming color palette, creating a tranquil atmosphere perfect for unwinding after a long day.





A Lifestyle That Prioritizes  
*Comfort & Well-Being*





Amenities  
Designed for the  
*Modern Lifestyle*



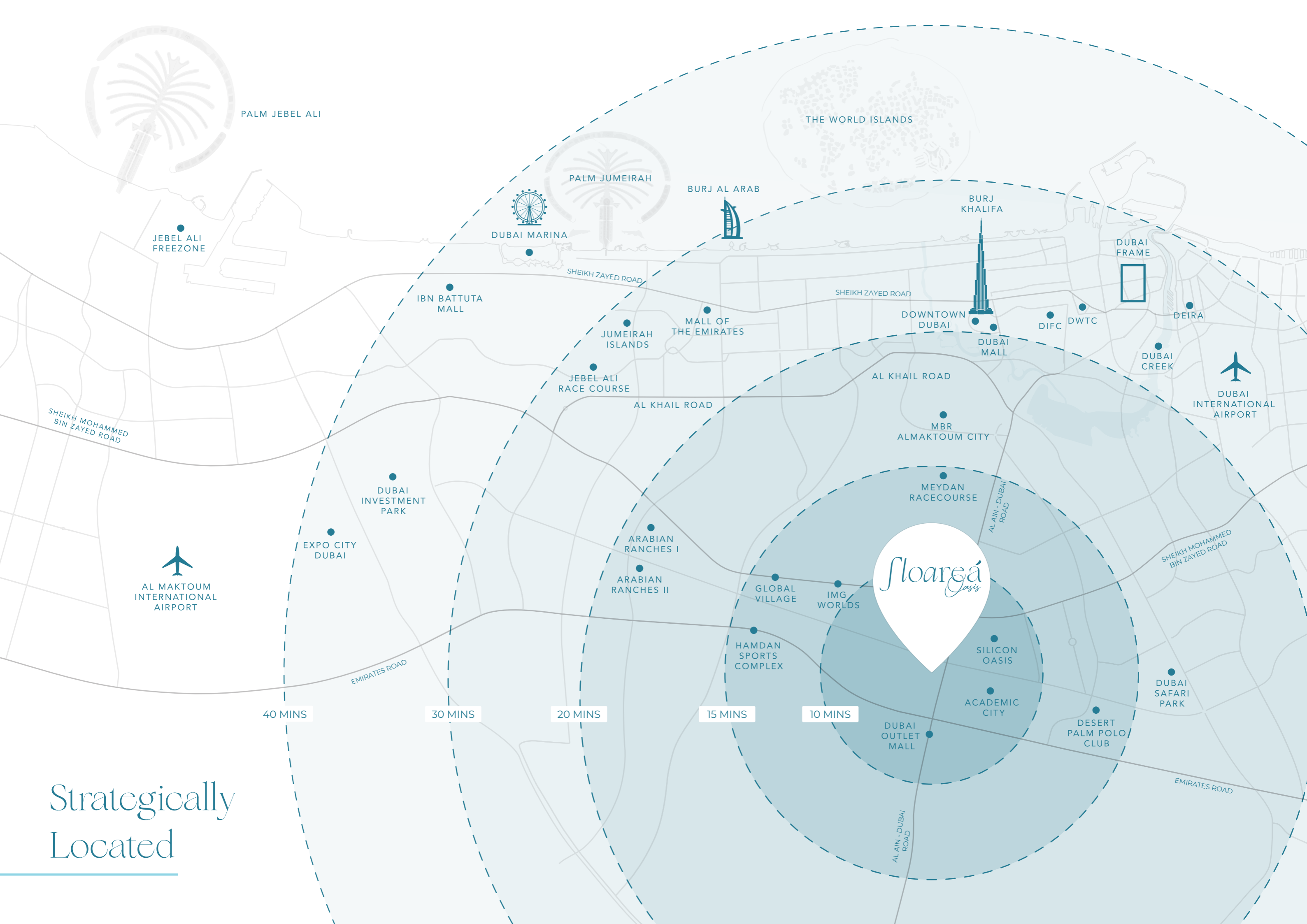






A person wearing a traditional white thobe and ghutra is shown in profile, looking out over a city skyline at sunset. The sun is low on the horizon, creating a warm, golden glow. The city buildings are silhouetted against the bright sky. The overall mood is serene and contemplative.

Your Gateway to  
Vibrant Living in a  
*Prime Location*



Strategically  
Located

# *floareá*

R E S I D E N C E

Floareá Residence laid the foundation for Mashriq Elite Developments, heralding a new era of luxury real estate. Positioned in Arjan along Sheikh Mohammed Bin Zayed Road, it promises upscale living with easy access to Dubai's premier destinations. Offering a range of meticulously designed units, from Studios to 2-bedroom apartments, Floareá focuses on community well-being with smart infrastructure, indoor gyms, and serene living spaces.

---

**Completed  
In Handover Process**



# *floareá Vista*

Presenting Floareá Vista, the newest creation from Mashriq Elite Developments in Discovery Gardens - Al Furjan Community. This Architectural Gem sets a new standard for living with enchanting interiors, innovative exteriors, and unmatched amenities. Spanning 10-Floors, it offers 158 Residential Units, having mix of Studios, One-Bedroom, and Two-Bedroom Apartments complemented by Amenities on First & Roof Floor.

---

**Completion Date**  
**Q4 2026**



# *Floareá Grandé*

In the realm of architectural brilliance, Floareá Grandé is a beacon of extraordinary design, where each creation is a fusion of visionary artistry and meticulous craftsmanship. Every structure embodies a harmonious balance of form and function, bringing to life a bold expression of innovation.

Each spacious apartment is a masterpiece offering expansive layouts that provide the perfect canvas for creating personalized, comfortable living spaces, while the latest in modern amenities ensure a lifestyle of unparalleled convenience. From sleek interiors to thoughtfully designed exteriors, every detail at Floareá Grandé is meticulously designed to elevate daily life.

---

**Completion Date**  
**Q4 2026**



# *floareá* *Skies*

A new benchmark in modern living, Floareá Skies is designed for those who seek refined living without compromise. Offering an exquisite selection of studio, 1-bedroom, and 2-bedroom residences, each home is perfectly designed with spacious layouts, premium finishes, and seamless functionality.

With a bold architectural presence and meticulously curated amenities, this development exudes an aura of refinement and comfort. Rooted in quality and timeless allure, Floareá Skies reimagines contemporary urban living at its finest.

---

**Completion Date**  
**Q3 2027**



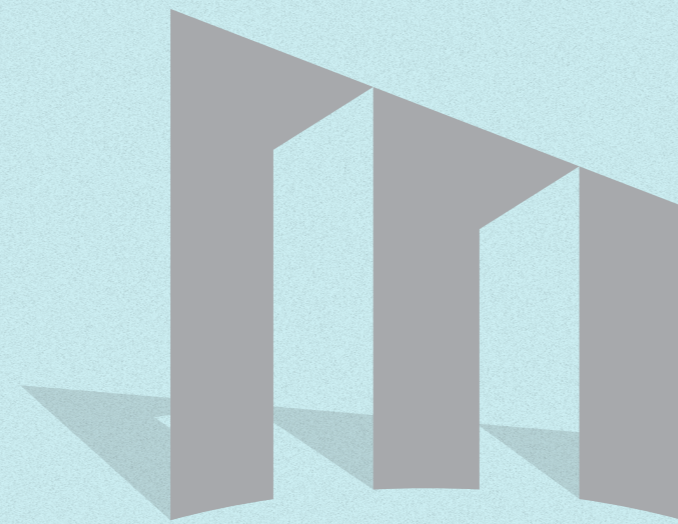
# The Art of Living

## *Entering Its Coastal Chapter*

Mashriq Elite Developers has quietly built a reputation for crafting refined, future-forward communities rooted in trust and thoughtful design. With a portfolio that includes one successfully completed project and three ongoing developments across JVC, Arjan, and Discovery Garden, the brand continues to elevate modern living. Now, Mashriq turns to its most ambitious chapter yet, a new waterfront masterpiece rising on the prestigious Dubai Islands. Seamlessly blending resort-style luxury with curated finishes and intelligent spaces, this upcoming project promises to redefine coastal living in Dubai.

# Upcoming Project | Dubai Island





Al Mashriq  
Group of Companies

**Mashriq Group**, your trusted partner in Real Estate, Project Development, and Telecommunication. With over two decades of experience, we have become pioneers in these industries, having network not only in the UAE but also across United States, Europe, Singapore, Saudi Arabia, and the wider region.

## Project Development

Our collateral team of highly skilled professionals collaborates closely with architects, engineers, contractors, and local authorities to ensure successful project delivery, adhering to the highest standards of quality, sustainability, and safety.

Our success stems from our commitment to customer satisfaction, innovation, and delivering tailored solutions. We excel in on-time, on-budget, high-quality project delivery. We adapt to industry trends, embrace technology, and thrive on overcoming challenges.

Choose Al Mashriq Group as your partner to ignite possibilities, unlock potential, and elevate your projects to new heights of success.

## Telecommunication

As technology continues to advance rapidly, the telecommunication industry plays a pivotal role in connecting people globally. In Telecommunication segment, we have a strong presence with an extensive supply chain and trading network. Our deep understanding of clientele needs allows us to provide top-notch services, solutions, trading, and supply chain management.

## Real Estate

In the realm of Real Estate, we specialize in a wide range of services including property development, investment, sales, and management in Asian & Middle-East Region. We have successfully completed a substantial count of residential and commercial segment in the region, catering to the evolving needs of our clients.

## Design Centre

Design is at the core of what we do. Our design and architecture services are a blend of innovation and practicality, where aesthetics harmoniously meet functionality. Our team of visionary architects and designers work closely with clients to understand their unique vision and needs.



MASHRIQ ELITE  
— DEVELOPMENTS —

The Next Chapter  
*of Your Life*

**800** MASHRIQ  
62 74 747

[sales@mashriqelite.com](mailto:sales@mashriqelite.com) | [www.mashriqelite.com](http://www.mashriqelite.com)

Main Office - 2901 & 2902 Sales Center - 2903 & 2904, West Burry Business Tower, Business Bay, Dubai