

||| MERAAS



CITY WALK
CRESTLANE



A LEADING MASTER DEVELOPER

Meraas is the developer behind some of Dubai's most iconic addresses from Bluewaters Residences to BVLGARI Residences. Known for exclusive, limited-edition homes in exceptional locations, Meraas blends innovation with artistic mastery to create exceptional living environments. Each development has a signature setting where sophistication, serenity, and vibrant communities thrive.



CITY WALK



WHERE LIFE
IS LIVED FULLY

City Walk is a creative lifestyle space to live, work, and play in the heart of Dubai. This upscale destination boasts a fusion of international retail offerings, gourmet restaurants, luxurious residences, and hotels, blending cutting-edge design with modern conveniences.

Drawing inspiration from the vibrancy of urban living and easy connectivity, City Walk has evolved into one of the city's most distinguished and recognisable neighbourhoods.

DIVE INTO THE CITY'S RHYTHM

At City Walk Crestlane, every corner pulses with energy, and every moment invites you to embrace the beat of the city and the calm of waterside living, creating an experience as dynamic and unique as you are.

It's a new vibe. It's a new space.
It's a new story.





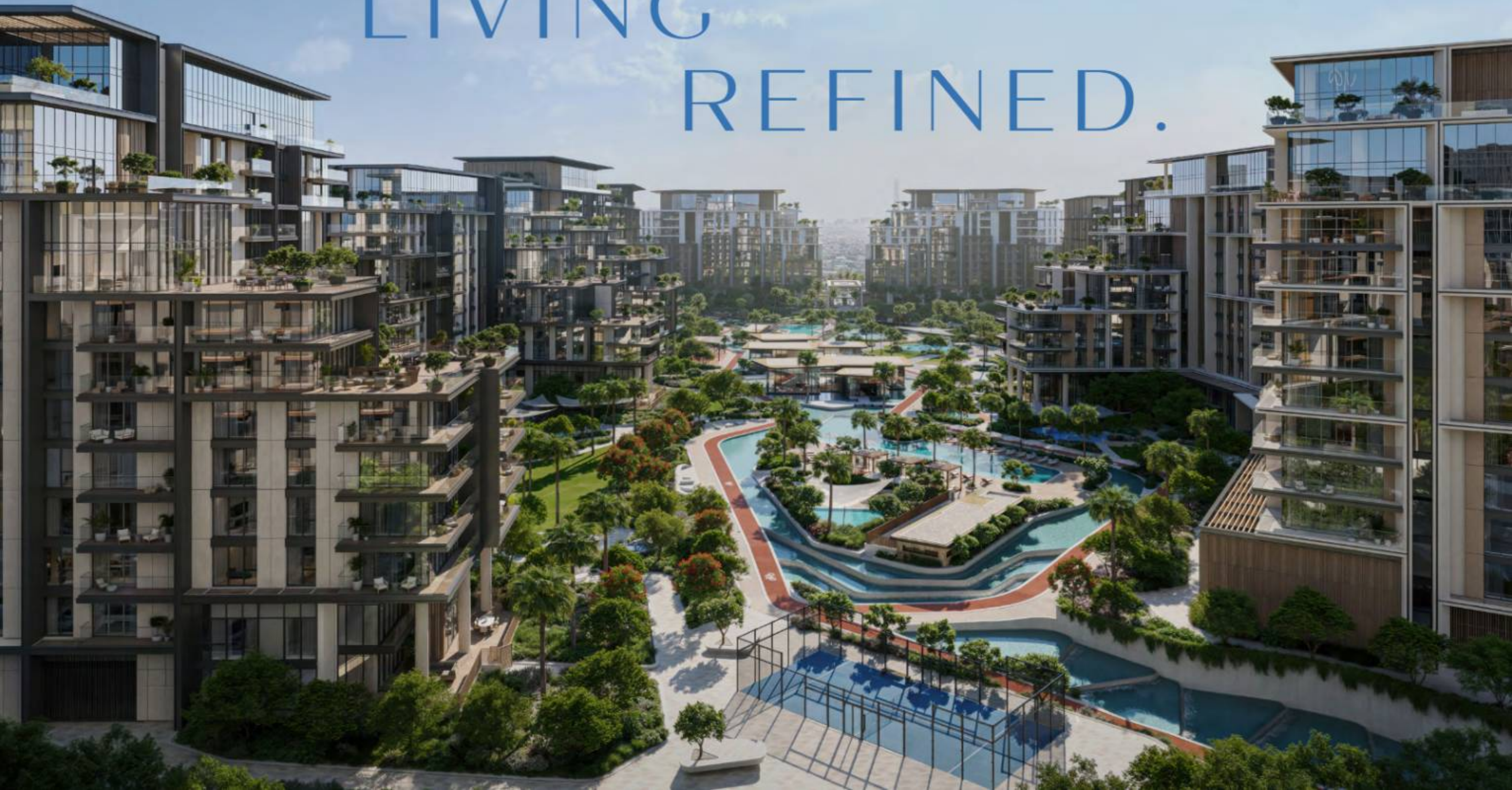
LET WATER SHAPE THE CITY'S BEAT

Water isn't just a feature at City Walk Crestlane, it's the essence of this masterfully designed community. Every building faces the water, making it the first thing you see, and the last thing you think about.

From tranquil reflections to gentle ripples, water flows

through every corner of the community, creating an atmosphere of movement and connection. Whether you're sitting back to enjoy the view, taking a refreshing dip, or gliding through its depths, here, the water draws you into its rhythm.

LIVING
IN SYNC.
LIVING
REFINED.



MOMENTS FROM THE CITY, MILES FROM THE ORDINARY

City Walk Crestlane offers seamless access to Dubai's most iconic landmarks and destinations. Just 10 minutes from the pristine shores of Jumeirah Beach and 5 minutes from the vibrant energy of Downtown Dubai, this prime location connects you to the city through major highways and road networks.

From breathtaking views of Dubai's glittering skyline to the tranquil expanse of the Arabian Gulf, this is a home where the best of both worlds meet. Here, city energy merges with peaceful, refreshing spaces, placing everything you love within reach, right in the heart of City Walk.

2
MINUTES FROM
CITY WALK MALL

3
MINUTES FROM
SHEIKH ZAYED ROAD

7
MINUTES FROM
JUMEIRAH BEACH

15
MINUTES FROM
DXB AIRPORT

7
MINUTES FROM
DUBAI MALL

11
MINUTES FROM
DIFC

CITY WALK CRESTLANE



AL WASL ROAD

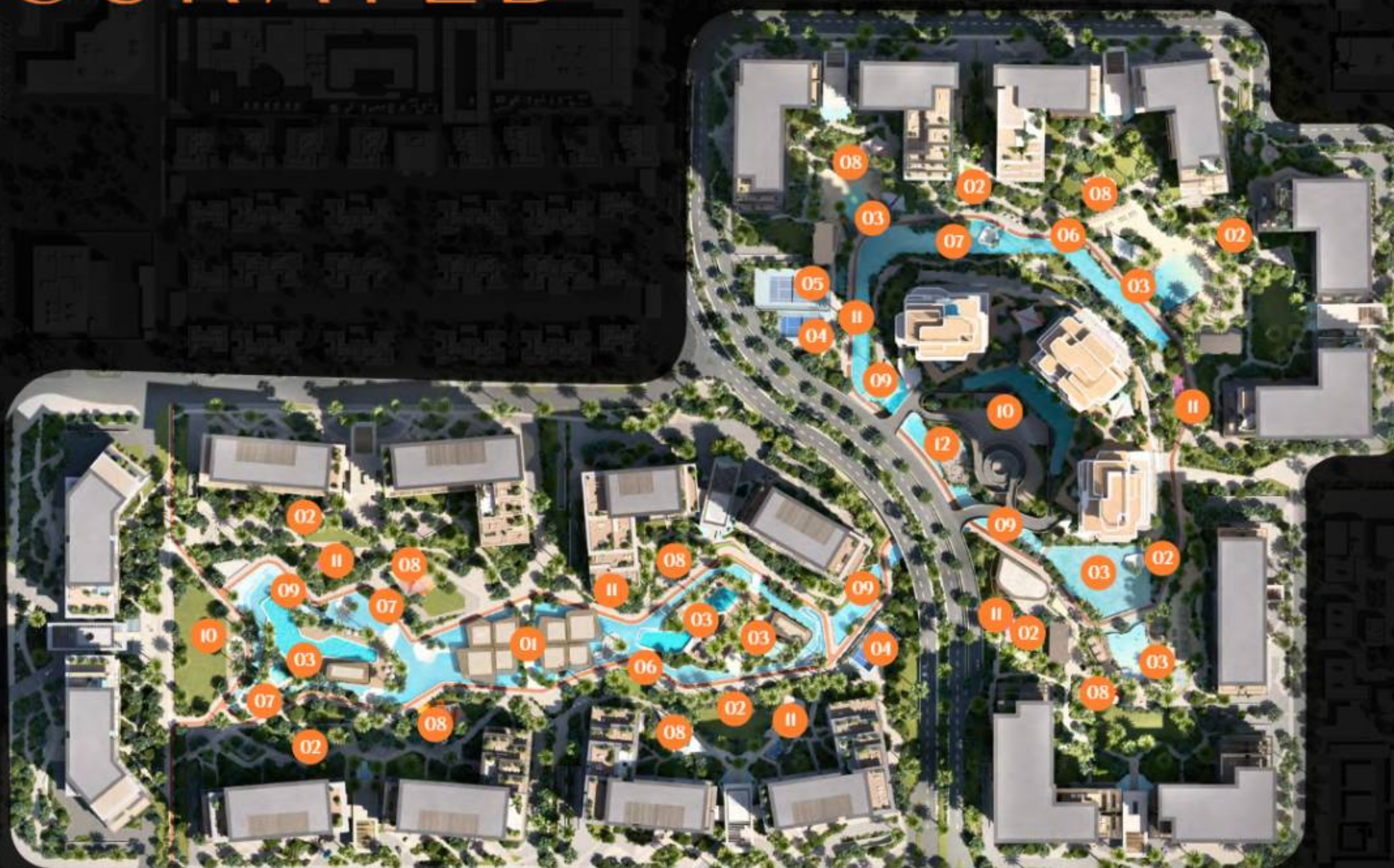
SHEIKH ZAYED ROAD

AL KHAIL ROAD



MEYDAN RACECOURSE

YOUR LIFESTYLE, CURATED



01 - COMMUNITY HUBS

02 - YOGA AND EXERCISE LAWNS

03 - SWIMMING POOLS

04 - PADEL COURT

05 - TENNIS COURT

06 - JOGGING TRACKS

07 - SUNKEN SEATS

08 - KIDS' PLAY AREA

09 - WATER FEATURES

10 - EVENTS LAWN

11 - OUTDOOR FITNESS STATIONS

12 - OUTDOOR CINEMA



URBAN FLOW, UNLIMITED MOMENTS

COMMUNITY

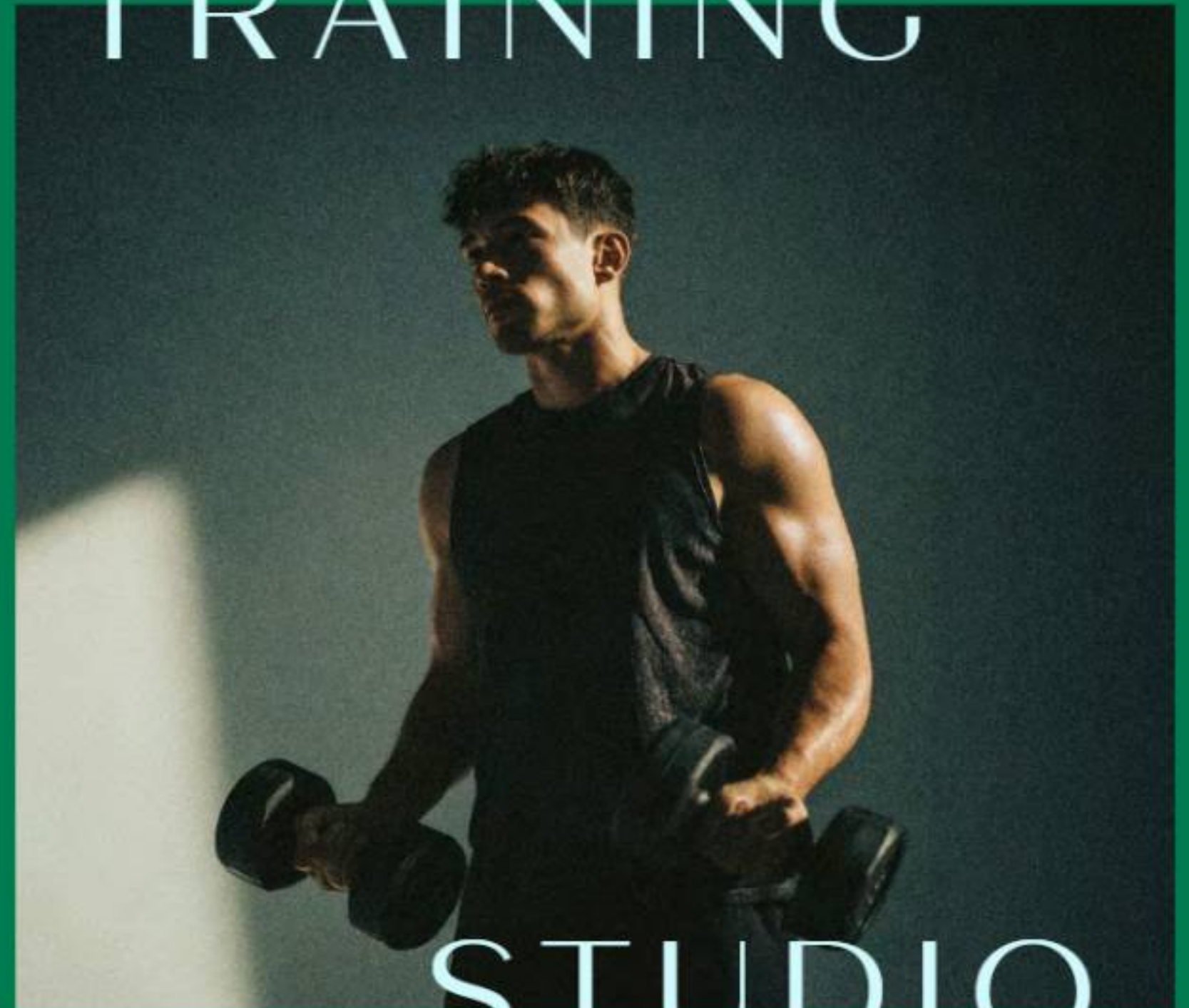


HUBS



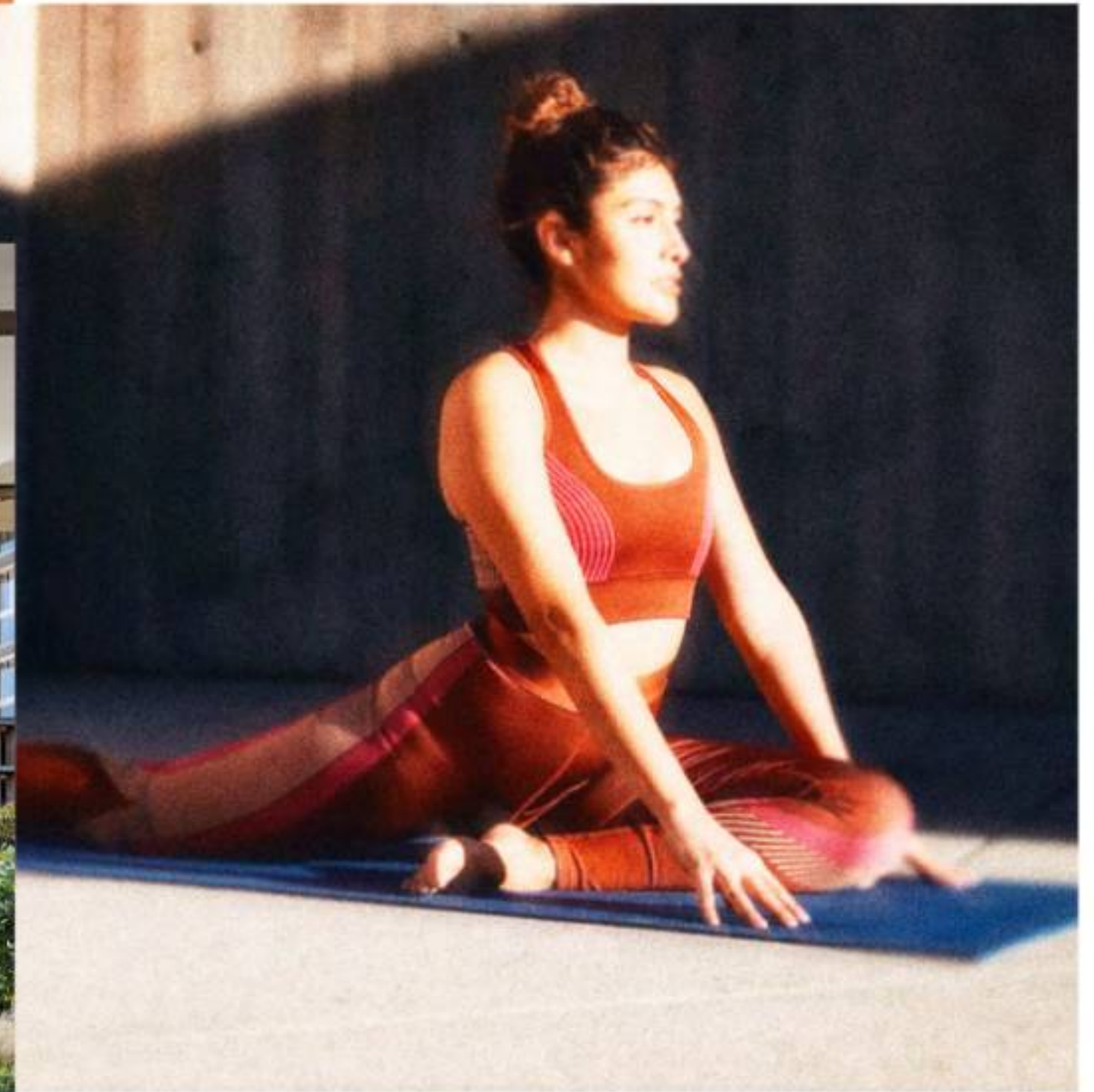


TRAINING



STUDIO

The Cardio Space fuels high-energy workouts with cutting-edge equipment, all set against the serene water view. Meanwhile, the Weights Area is designed to push your limits, featuring the latest fitness tech in a space built for strength and power.



YOGA STUDIO

The Yoga Studio is your calm within the storm—a serene escape where panoramic glass walls frame tranquil water views, inviting you to unwind, breathe, and find your balance in perfect harmony.

COMMUNITY LOUNGE

The Community Lounge is a multi-purpose space that effortlessly blends indoor and outdoor, featuring a sunken seating area overlooking the pool and waterscape.

Whether you're relaxing, socialising, or creating moments that matter, this is your space to make it happen, with views that inspire and vibes that energise.



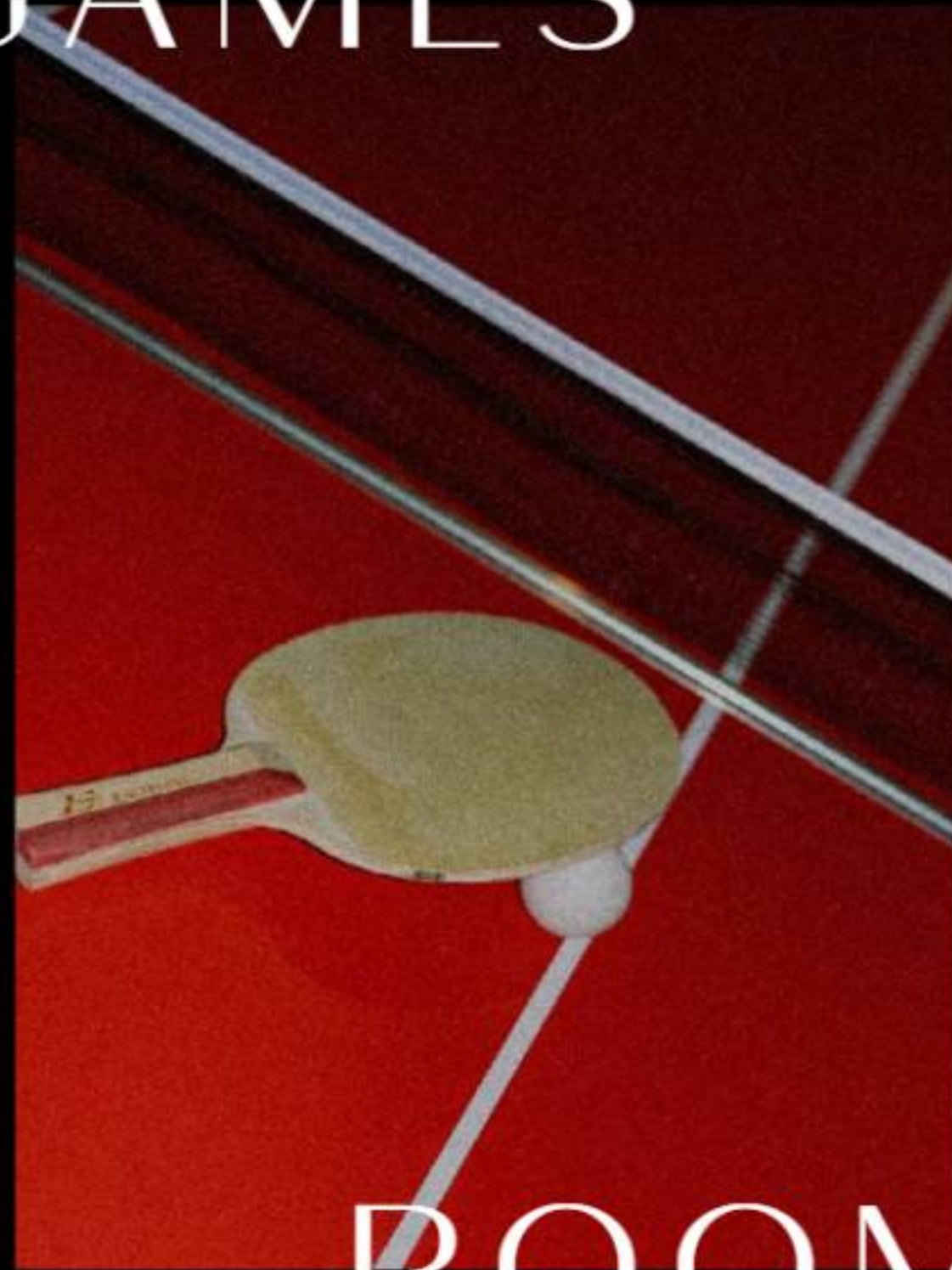
COLLABORATIVE SUITE



The Collaborative Suite isn't just a workspace—it's the perfect fusion of productivity and peace, featuring modern workstations and expansive windows with uninterrupted water views to keep your creativity flowing and your vibe perfectly balanced.

This space also offers a library, providing a quiet retreat for reading when you need a break, making it the ideal environment to focus, collaborate, and create.

GAMES



ROOM



The Games Room is a sun-filled social space curated for connection and entertainment. With a selection of table games in a spacious and sophisticated setting, it offers the perfect backdrop to unwind, compete, and celebrate memorable moments.

OUTDOOR
EXPERIENCES



SWIMMING POOLS



Dive into the refreshing waters, featuring infinity pools, beach-style pools, and dedicated kids' pools. Each space offers the perfect setting for residents to swim, relax, and enjoy quality time with family in a peaceful, resort-style atmosphere.



WATER FEATURES

Embrace the community's ambiance, enhanced by stunning cascading water features that set a calming tone and invite relaxation and tranquility throughout.

SPORTS

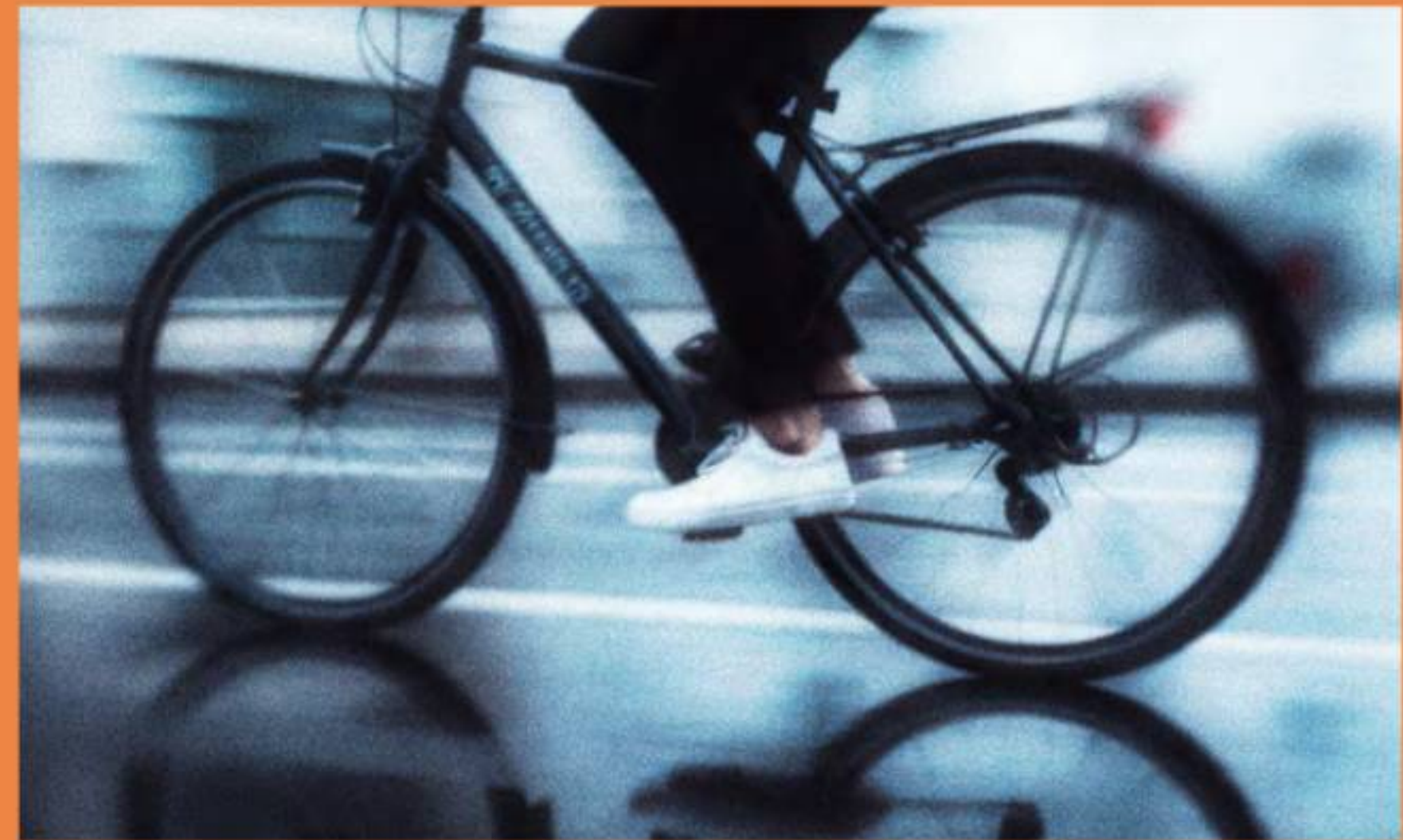


COURTS



Experience world-class Padel and Tennis Courts, where casual games meet intense competition, set in a vibrant, dynamic outdoor environment that pulses with energy.

ACTIVE TRACKS



Hit the winding jogging tracks that cut through lush greenery, offering the perfect route to run, walk, or just vibe with the outdoors. Dedicated cycling lanes curve with the terrain, giving both fitness enthusiasts and casual riders a chance to enjoy the community's vibrant, natural energy.

SUNKEN LOUNGES



Immerse yourself in the serenity of sunken seating nestled in water, offering a peaceful retreat amidst lush surroundings.



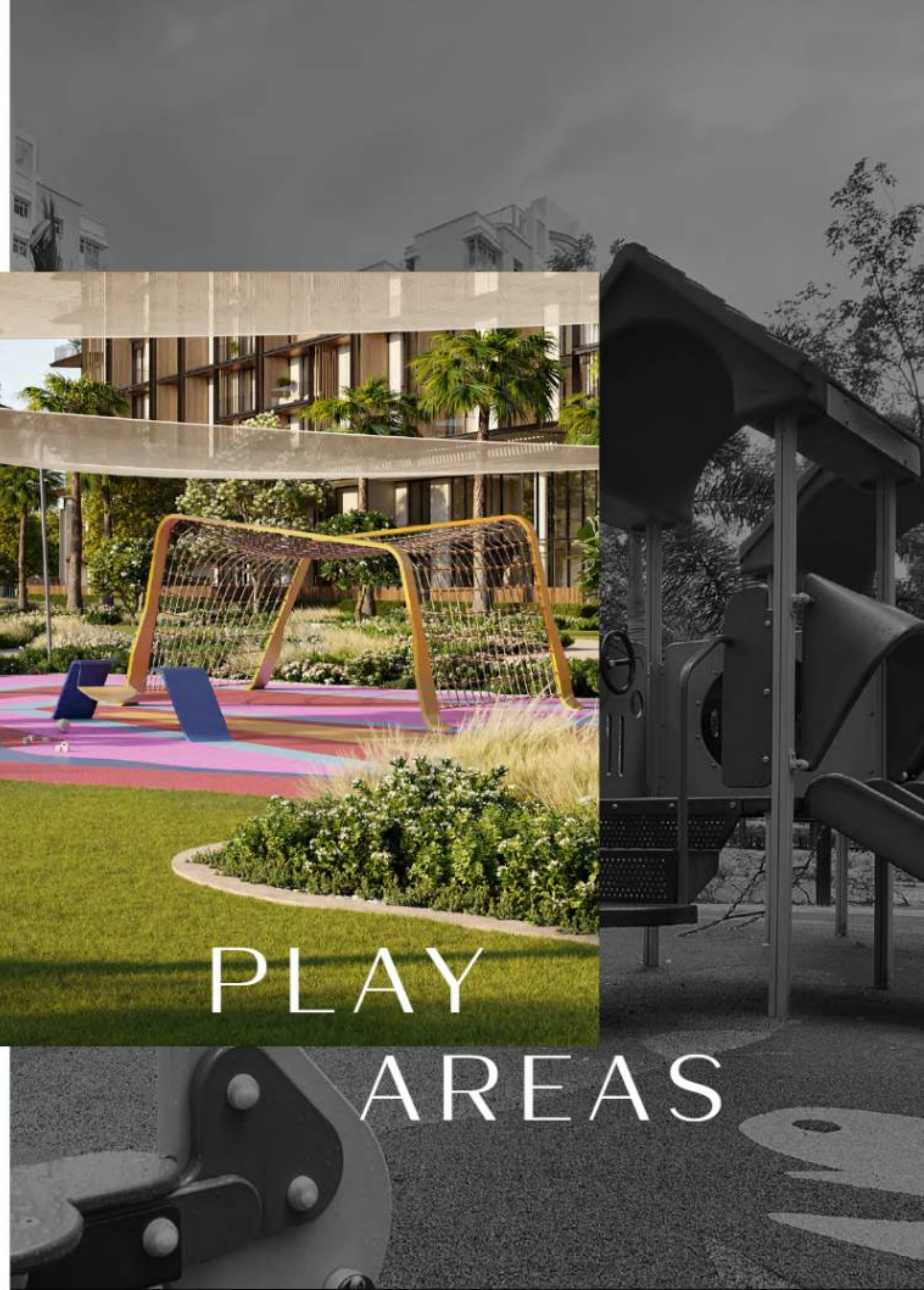
EVENT LAWNS

Set the stage on the Event Lawns for unforgettable gatherings, from community events to exclusive celebrations, where the energy comes alive.

Discover an engaging corner where children can explore, play, and learn with interactive equipment and creative play zones.



PLAY AREAS



NEW CHAPTER, SAME ICONIC ADDRESS





AL WASL ROAD

AL MULTAQA STREET

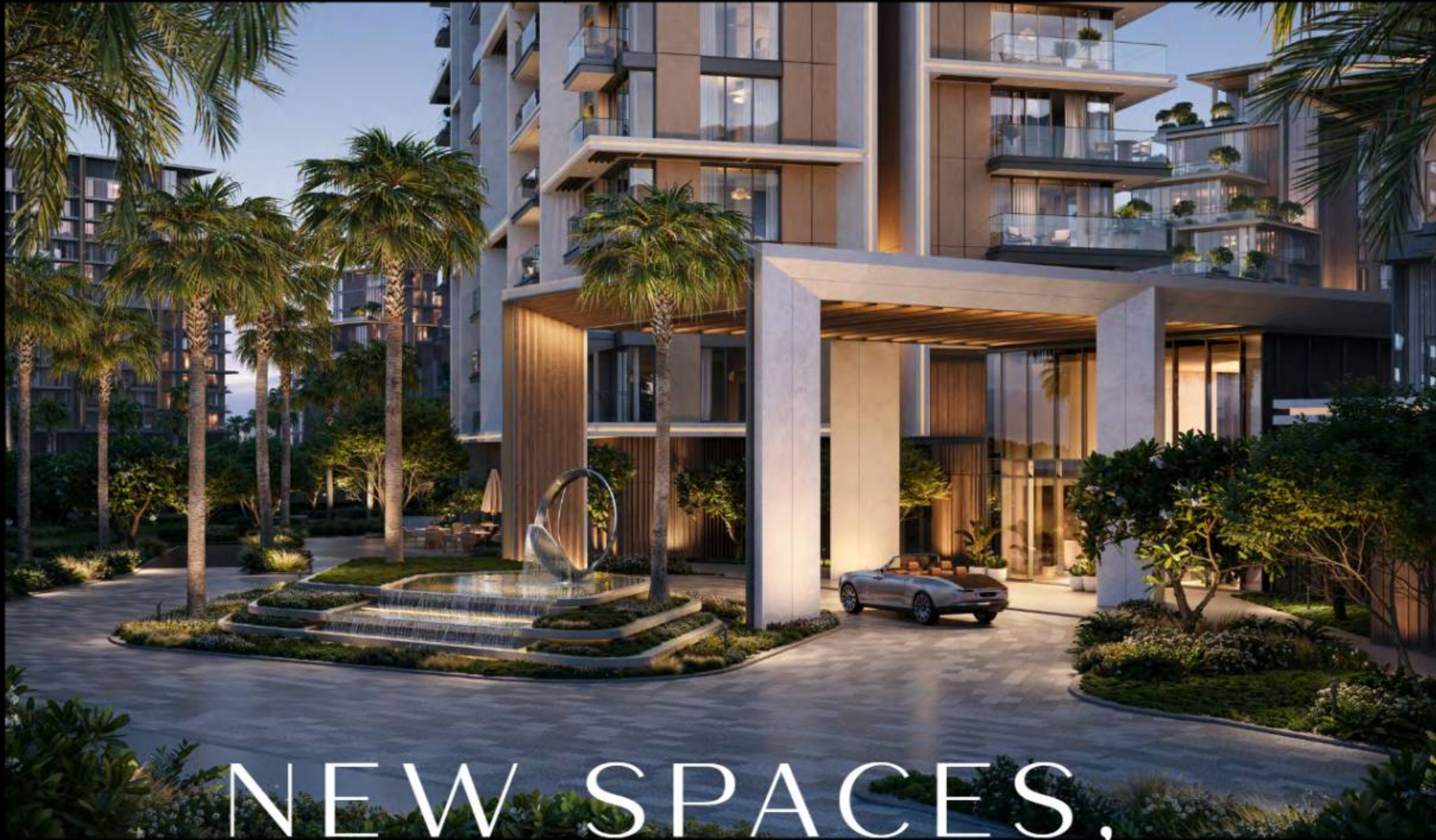
13TH STREET



CITY WALK
CRESTLANE 5

CITY WALK
CRESTLANE 4

Introducing City Walk Crestlane 4 and 5, distinctive residences defined by exclusivity, urban ease, and a connected community lifestyle, setting the pace for contemporary living in the heart of the city. Each comprises two mid-rise towers with direct access to water features and park landscapes, offering a private retreat within the city's core.



NEW SPACES,
ENDLESS MOMENTS

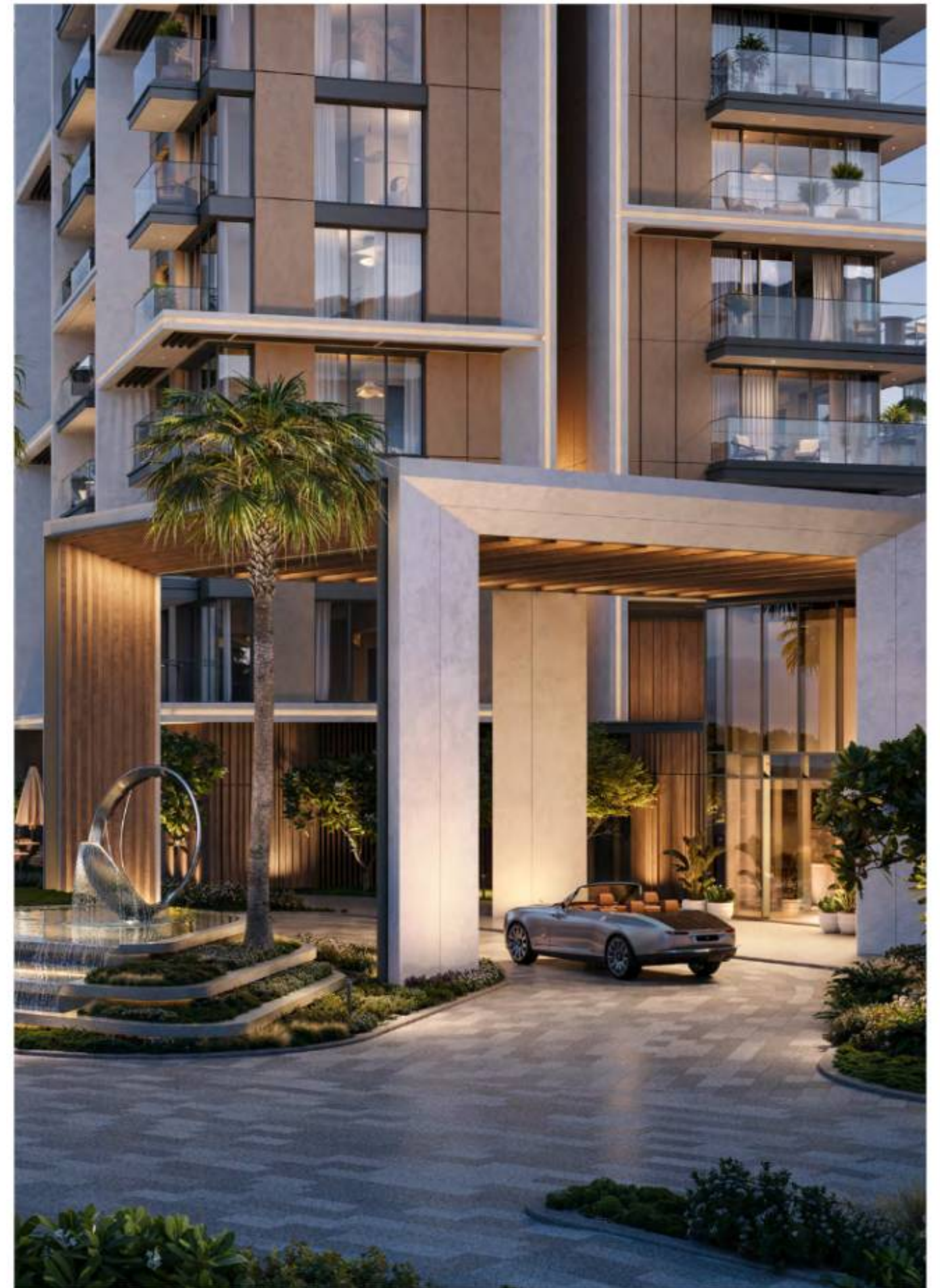


FIRST IMPRESSIONS,

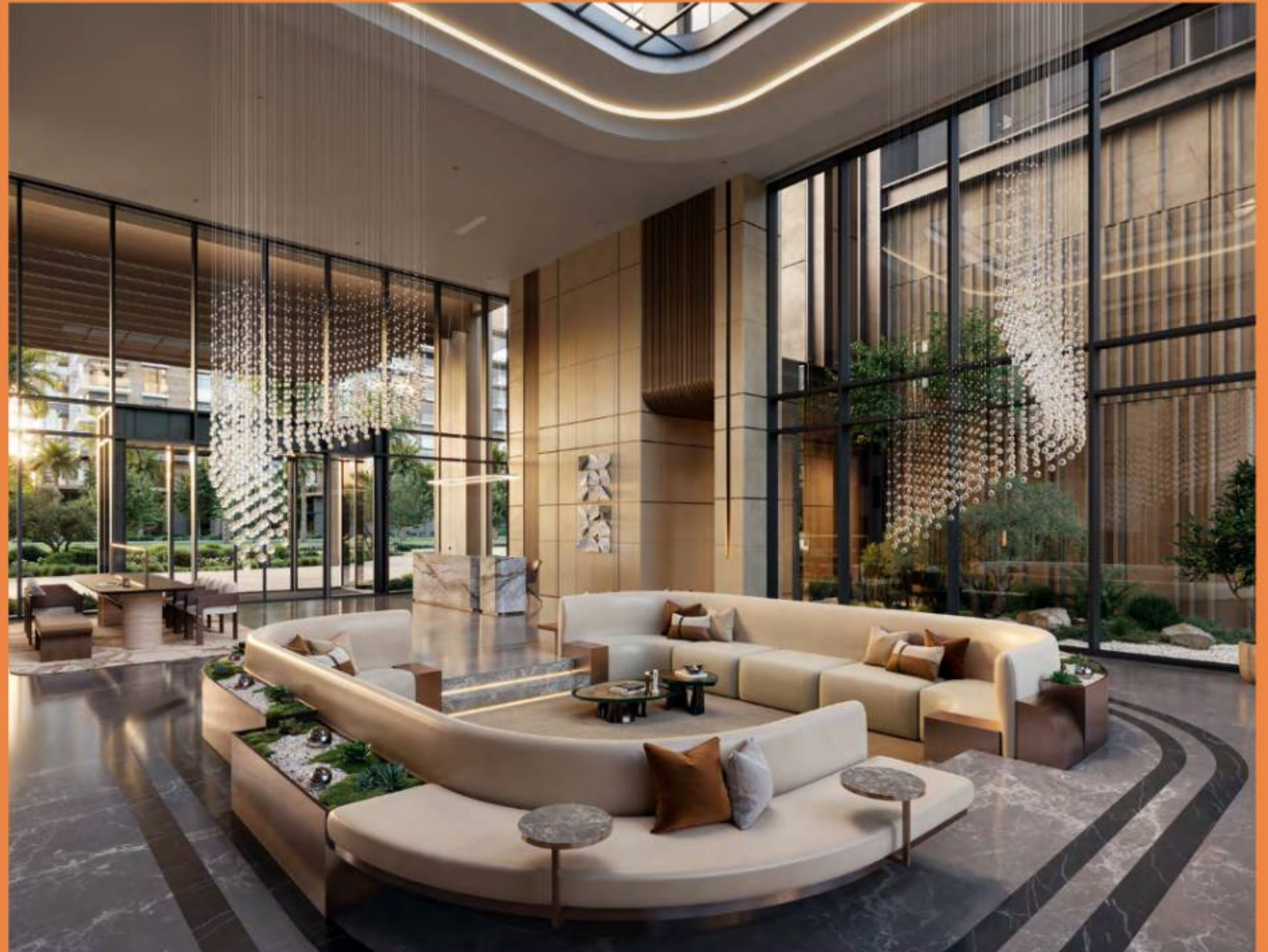


PERFECTED

Arrive at a sleek, elevated drop-off that creates a refined first impression, leading into a striking double-height lobby framed by lush landscaping and tranquil water features, setting the tone for sophisticated living from the moment you enter.



WHERE YOU MAKE AN ENTRANCE



Walk through an expansive double-height lobby where natural light fills the space and lush greenery comes into view. A refined blend of openness and elegance that sets the tone for the vibrant living experience ahead.

WHERE

PLAY



MEETS

IMAGINATION



Discover a themed indoor kids' play area designed to spark creativity and joy. This playful space provides children with a safe and exciting environment to explore.



MULTI-PURPOSE SPACE

A thoughtfully designed multipurpose space with direct park access, curated for a range of activities and experiences.



URBAN
LIVING
TAILORED TO
YOUR
LIFESTYLE



1 TO 4-BEDROOM APARTMENTS

Discover a curated collection of 1- to 3-bedroom apartments that pair contemporary design with panoramic park vistas, tranquil water features, and sweeping city views. Inside, thoughtfully planned layouts, high-quality finishes, and kitchens crafted from premium materials create spaces that maximise both comfort and style.

For those seeking more space and distinction, the signature 3- and 4-bedroom residences elevate living to new heights. Double-height living areas open onto expansive private terraces, offering the ideal backdrop for effortless indoor-outdoor living.









CRESTLANE 4
1 TO 3-BEDROOM

LIVING & DINING



CRESTLANE 4
1 TO 3-BEDROOM

KITCHEN



CRESTLANE 4
1 TO 3-BEDROOM

MASTER BEDROOM



CRESTLANE 4
1 TO 3-BEDROOM

MASTER BATHROOM









CRESTLANE 5
1 TO 3-BEDROOM

LIVING & DINING



CRESTLANE 5
1 TO 3-BEDROOM

KITCHEN



CRESTLANE 5
1 TO 3-BEDROOM

MASTER BEDROOM



4-BEDROOM DUPLICES

Elevate your living experience with the 4-bedroom duplex units, where every detail defines luxury. Double-height living areas flow effortlessly onto private terraces with direct park access and serene water views, blurring the lines between indoors and outdoors to create a perfect blend of style, functionality, and modern living. Exclusive private lift access from designated parking ensures privacy, while bright, expansive interiors amplify the sense of boundless space.



CRESTLANE 4
4-BEDROOM DUPLEXES

LIVING & STAIRCASE





CRESTLANE 4
4-BEDROOM DUPLEXES

MASTER BEDROOM





CRESTLANE 5
4-BEDROOM DUPLEXES

BALCONY







**CRESTLANE 5
4-BEDROOM DUPLEXES**

MASTER BEDROOM



 MERAAS