

**COASTAL
HAVEN**
BY PRESTIGE HARBOUR

PRESTIGE ONE

UNIT 201

2 BEDROOM TYPE A

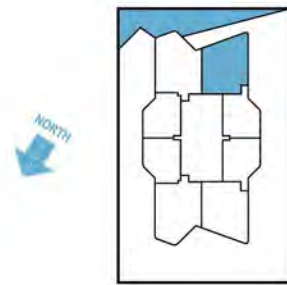
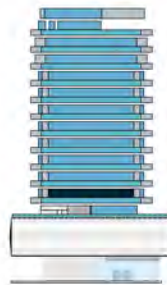
**COASTAL
HAVEN**

BY PRESTIGE HARBOUR



UNIT SIZE

UNIT AREA	1,071.44FT ²
BALCONY AREA	129.27FT ²
TOTAL AREA	1,200.71FT ²



PRESTIGE ONE

All drawings and dimensions are approximate. Drawings are not to scale and are subject to change without notice. The developer reserves the right to make revisions. The units are measured at typical floor in the building and columns may vary in size depending on the floor level. The furnishings and accessories shown are for representation only. The length and width of the Unit and balcony varies depending on which floor and which orientation the unit is located within the building to comply with the building authority regulations. Apartment unit sizes may vary. Actual unit sizes will be reflected on the Sales and Purchase Agreement.



COASTAL HAVEN
BY PRESTIGE HARBOUR

PRESTIGE ONE

UNIT 202

1 BEDROOM TYPE A

COASTAL HAVEN

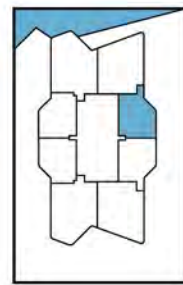
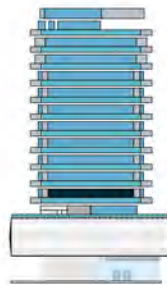


BY PRESTIGE HARBOUR



UNIT SIZE

UNIT AREA	673.39FT ²
BALCONY AREA	136.27FT ²
TOTAL AREA	809.66FT ²



PRESTIGE ONE

All drawings and dimensions are approximate. Drawings are not to scale and are subject to change without notice. The developer reserves the right to make revisions. The units are measured at typical floor in the building and columns may vary in size depending on the floor level. The furnishings and accessories shown are for representation only. The length and width of the Unit and balcony varies depending on which floor and which orientation the unit is located within the building to comply with the building authority regulations. Apartment unit sizes may vary. Actual unit sizes will be reflected on the Sales and Purchase Agreement.



COASTAL
HAVEN
BY PRESTIGE HARBOUR

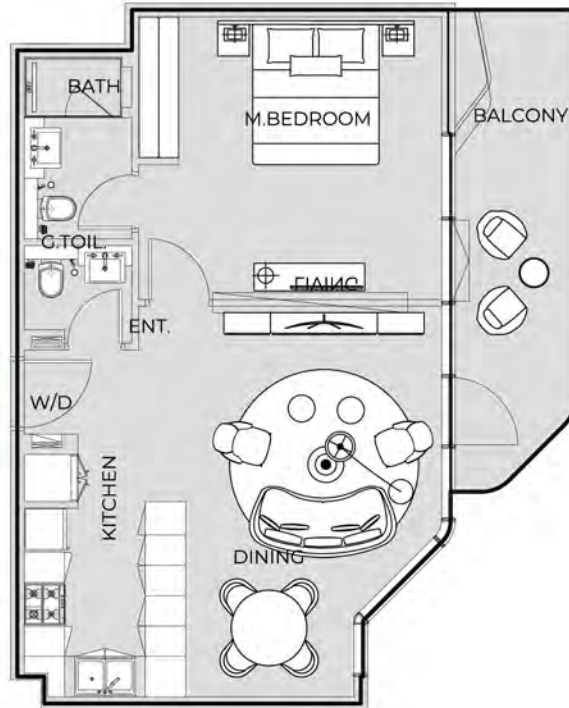
PRESTIGE ONE

UNIT 203

1 BEDROOM TYPE A

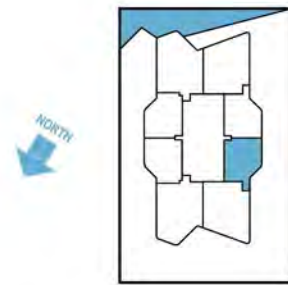
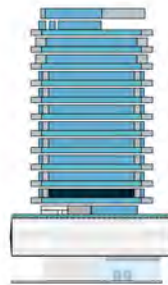
COASTAL
HAVEN

BY PRESTIGE HARBOUR



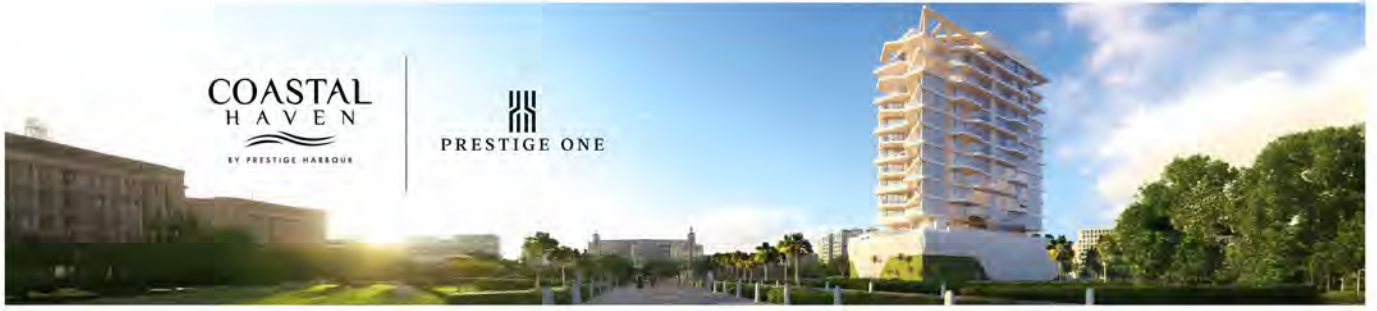
UNIT SIZE

UNIT AREA	673.39FT ²
BALCONY AREA	136.27FT ²
TOTAL AREA	809.66FT ²



PRESTIGE ONE

All drawings and dimensions are approximate. Drawings are not to scale and are subject to change without notice. The developer reserves the right to make revisions. The units are measured at typical floor in the building and columns may vary in size depending on the floor level. The furnishings and accessories shown are for representation only. The length and width of the Unit and balcony varies depending on which floor and which orientation the unit is located within the building to comply with the building authority regulations. Apartment unit sizes may vary. Actual unit sizes will be reflected on the Sales and Purchase Agreement.



COASTAL
HAVEN
BY PRESTIGE HARBOUR

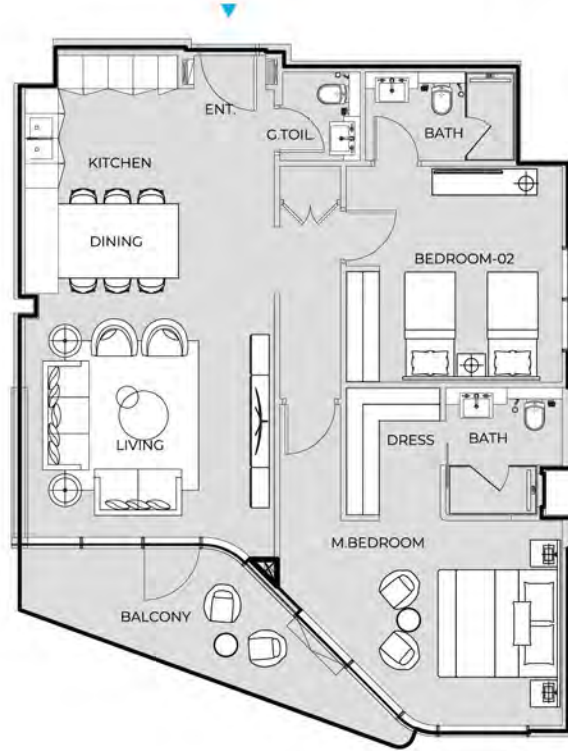
PRESTIGE ONE

UNIT 204

2 BEDROOM TYPE A

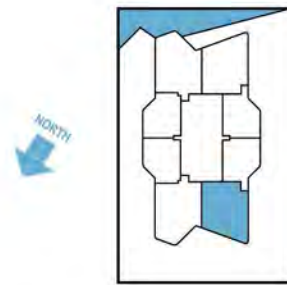
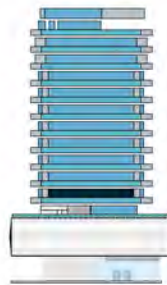
COASTAL
HAVEN

BY PRESTIGE HARBOUR



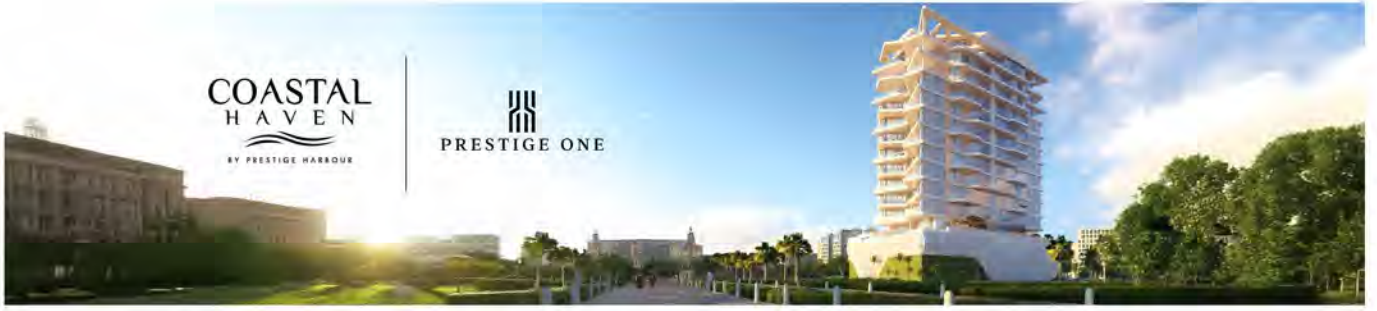
UNIT SIZE

UNIT AREA	1,071.44FT ²
BALCONY AREA	129.27FT ²
TOTAL AREA	1,200.71FT ²



PRESTIGE ONE

All drawings and dimensions are approximate. Drawings are not to scale and are subject to change without notice. The developer reserves the right to make revisions. The units are measured at typical floor in the building and columns may vary in size depending on the floor level. The furnishings and accessories shown are for representation only. The length and width of the Unit and balcony varies depending on which floor and which orientation the unit is located within the building to comply with the building authority regulations. Apartment unit sizes may vary. Actual unit sizes will be reflected on the Sales and Purchase Agreement.



COASTAL
HAVEN
BY PRESTIGE HARBOUR

PRESTIGE ONE

UNIT 205

2 BEDROOM TYPE B

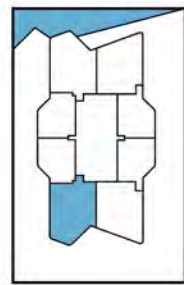
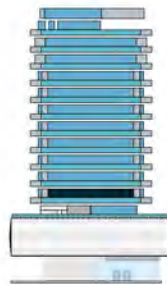
COASTAL
HAVEN

BY PRESTIGE HARBOUR



UNIT SIZE

UNIT AREA	1,071.44FT ²
BALCONY AREA	172.65FT ²
TOTAL AREA	1,244.09FT ²



PRESTIGE ONE

All drawings and dimensions are approximate. Drawings are not to scale and are subject to change without notice. The developer reserves the right to make revisions. The units are measured at typical floor in the building and columns may vary in size depending on the floor level. The furnishings and accessories shown are for representation only. The length and width of the Unit and balcony varies depending on which floor and which orientation the unit is located within the building to comply with the building authority regulations. Apartment unit sizes may vary. Actual unit sizes will be reflected on the Sales and Purchase Agreement.



COASTAL HAVEN
BY PRESTIGE HARBOUR

PRESTIGE ONE

UNIT 206

1 BEDROOM TYPE B

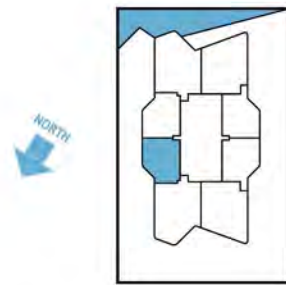
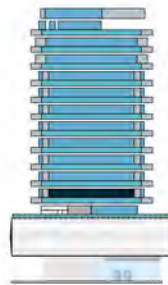
COASTAL HAVEN

BY PRESTIGE HARBOUR



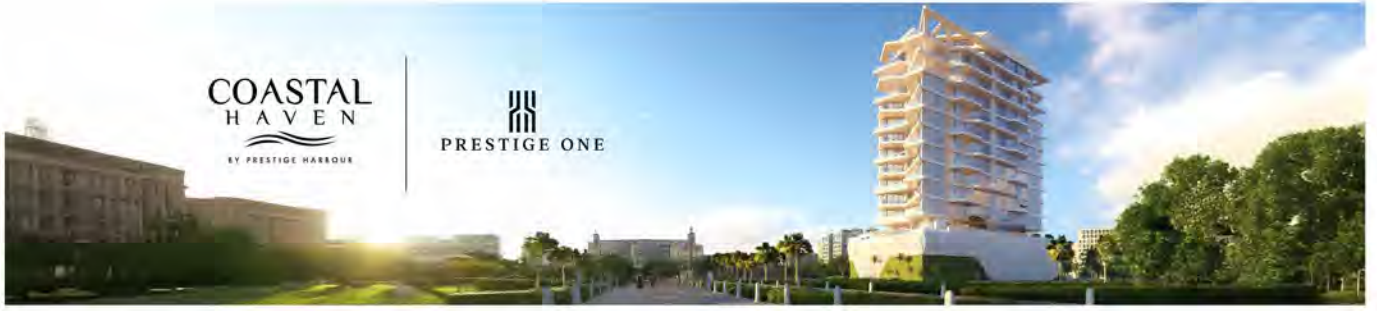
UNIT SIZE

UNIT AREA	671.78FT ²
BALCONY AREA	136.27FT ²
TOTAL AREA	808.05FT ²



PRESTIGE ONE

All drawings and dimensions are approximate. Drawings are not to scale and are subject to change without notice. The developer reserves the right to make revisions. The units are measured at typical floor in the building and columns may vary in size depending on the floor level. The furnishings and accessories shown are for representation only. The length and width of the Unit and balcony varies depending on which floor and which orientation the unit is located within the building to comply with the building authority regulations. Apartment unit sizes may vary. Actual unit sizes will be reflected on the Sales and Purchase Agreement.



COASTAL
HAVEN
BY PRESTIGE HARBOUR

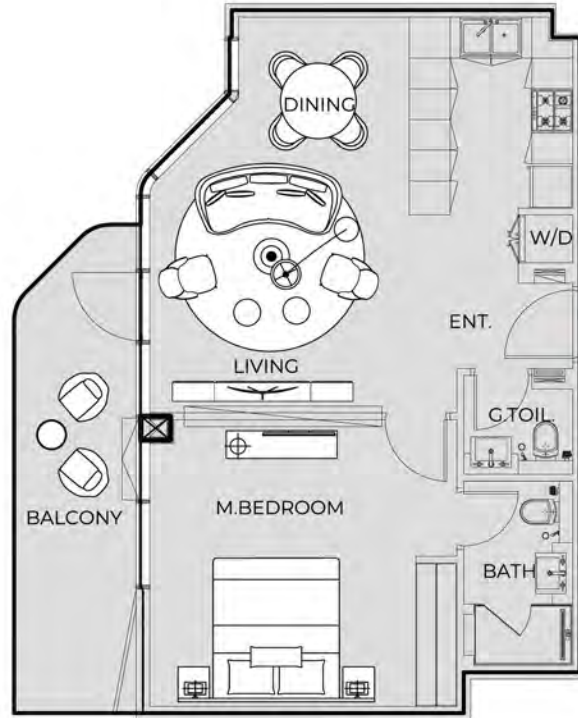
PRESTIGE ONE

UNIT 207

1 BEDROOM TYPE B

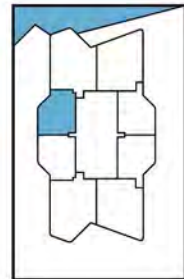
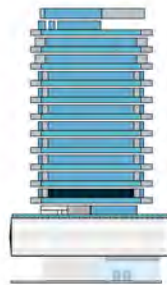
COASTAL
HAVEN

BY PRESTIGE HARBOUR



UNIT SIZE

UNIT AREA	673.39FT ²
BALCONY AREA	136.27FT ²
TOTAL AREA	809.66FT ²



PRESTIGE ONE

All drawings and dimensions are approximate. Drawings are not to scale and are subject to change without notice. The developer reserves the right to make revisions. The units are measured at typical floor in the building and columns may vary in size depending on the floor level. The furnishings and accessories shown are for representation only. The length and width of the Unit and balcony varies depending on which floor and which orientation the unit is located within the building to comply with the building authority regulations. Apartment unit sizes may vary. Actual unit sizes will be reflected on the Sales and Purchase Agreement.



COASTAL
HAVEN
BY PRESTIGE HARBOUR

PRESTIGE ONE

UNIT 208

2 BEDROOM TYPE B

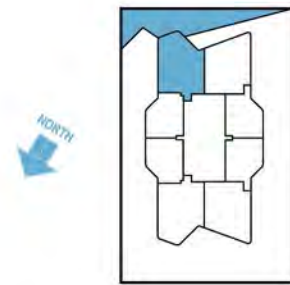
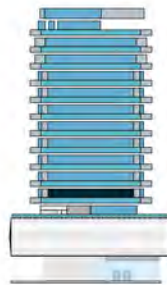
COASTAL
HAVEN

BY PRESTIGE HARBOUR



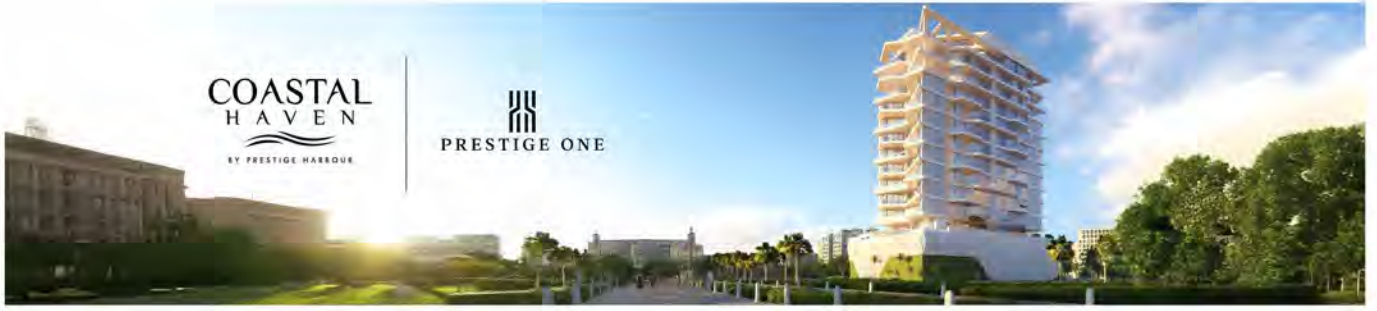
UNIT SIZE

UNIT AREA	1,071.44FT ²
BALCONY AREA	172.65FT ²
TOTAL AREA	1,244.09FT ²



PRESTIGE ONE

All drawings and dimensions are approximate. Drawings are not to scale and are subject to change without notice. The developer reserves the right to make revisions. The units are measured at typical floor in the building and columns may vary in size depending on the floor level. The furnishings and accessories shown are for representation only. The length and width of the Unit and balcony varies depending on which floor and which orientation the unit is located within the building to comply with the building authority regulations. Apartment unit sizes may vary. Actual unit sizes will be reflected on the Sales and Purchase Agreement.



**COASTAL
HAVEN**
BY PRESTIGE HARBOUR

PRESTIGE ONE

UNIT 301

2 BEDROOM TYPE B

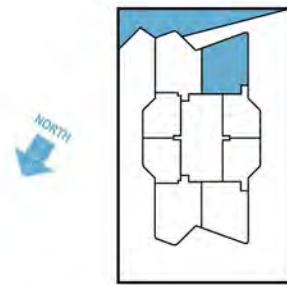
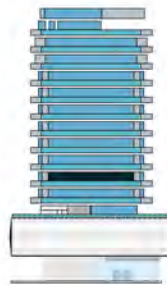
**COASTAL
HAVEN**

BY PRESTIGE HARBOUR



UNIT SIZE

UNIT AREA	1,071.65FT ²
BALCONY AREA	172.22FT ²
TOTAL AREA	1,243.88FT ²



PRESTIGE ONE

All drawings and dimensions are approximate. Drawings are not to scale and are subject to change without notice. The developer reserves the right to make revisions. The units are measured at typical floor in the building and columns may vary in size depending on the floor level. The furnishings and accessories shown are for representation only. The length and width of the Unit and balcony varies depending on which floor and which orientation the unit is located within the building to comply with the building authority regulations. Apartment unit sizes may vary. Actual unit sizes will be reflected on the Sales and Purchase Agreement.



**COASTAL
HAVEN**
BY PRESTIGE HARBOUR

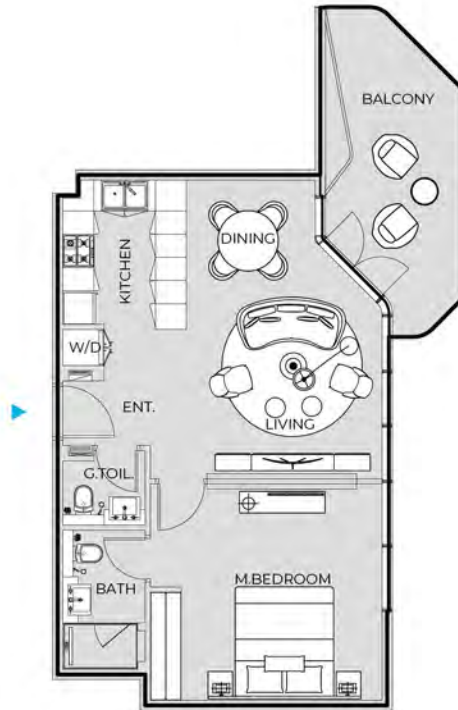
PRESTIGE ONE

UNIT 302

1 BEDROOM TYPE C

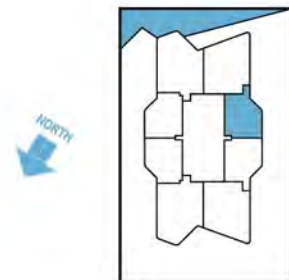
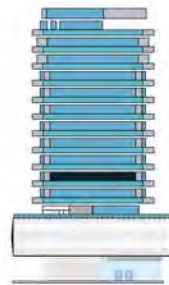
**COASTAL
HAVEN**

BY PRESTIGE HARBOUR



UNIT SIZE

UNIT AREA	673.39FT ²
BALCONY AREA	156.94FT ²
TOTAL AREA	830.33FT ²



PRESTIGE ONE

All drawings and dimensions are approximate. Drawings are not to scale and are subject to change without notice. The developer reserves the right to make revisions. The units are measured at typical floor in the building and columns may vary in size depending on the floor level. The furnishings and accessories shown are for representation only. The length and width of the Unit and balcony varies depending on which floor and which orientation the unit is located within the building to comply with the building authority regulations. Apartment unit sizes may vary. Actual unit sizes will be reflected on the Sales and Purchase Agreement.



COASTAL
HAVEN
BY PRESTIGE HARBOUR

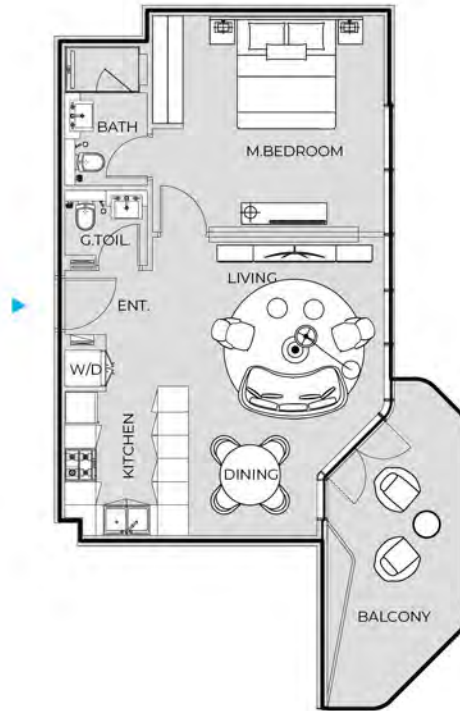
PRESTIGE ONE

UNIT 303

1 BEDROOM TYPE C

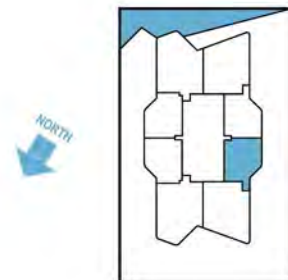
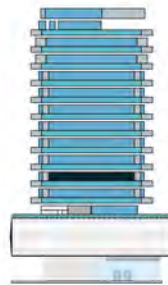
COASTAL
HAVEN

BY PRESTIGE HARBOUR



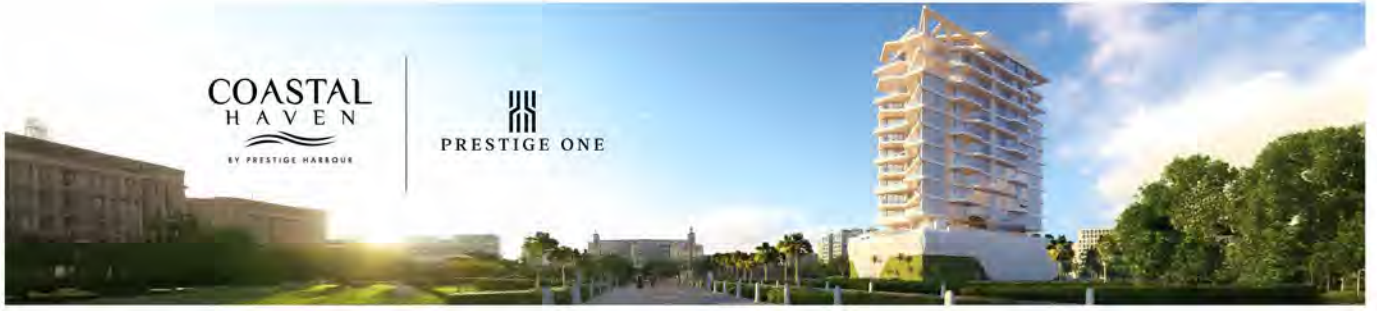
UNIT SIZE

UNIT AREA	673.39FT ²
BALCONY AREA	156.94FT ²
TOTAL AREA	830.33FT ²



PRESTIGE ONE

All drawings and dimensions are approximate. Drawings are not to scale and are subject to change without notice. The developer reserves the right to make revisions. The units are measured at typical floor in the building and columns may vary in size depending on the floor level. The furnishings and accessories shown are for representation only. The length and width of the Unit and balcony varies depending on which floor and which orientation the unit is located within the building to comply with the building authority regulations. Apartment unit sizes may vary. Actual unit sizes will be reflected on the Sales and Purchase Agreement.



COASTAL
HAVEN
BY PRESTIGE HARBOUR

PRESTIGE ONE

UNIT 304

2 BEDROOM TYPE B

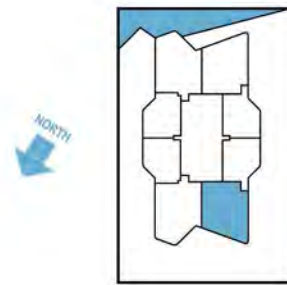
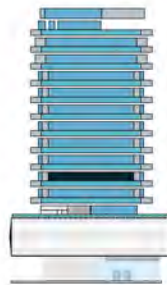
COASTAL
HAVEN

BY PRESTIGE HARBOUR



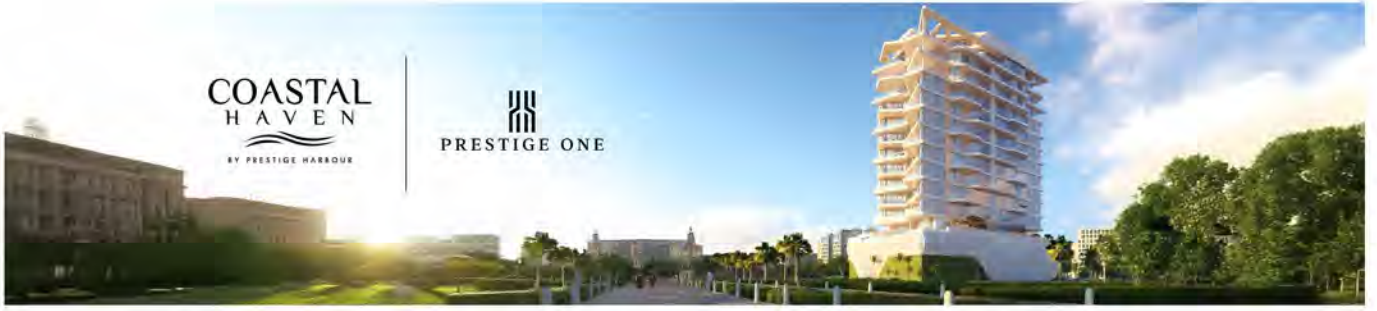
UNIT SIZE

UNIT AREA	1,071.65FT ²
BALCONY AREA	172.11FT ²
TOTAL AREA	1,243.77FT ²



PRESTIGE ONE

All drawings and dimensions are approximate. Drawings are not to scale and are subject to change without notice. The developer reserves the right to make revisions. The units are measured at typical floor in the building and columns may vary in size depending on the floor level. The furnishings and accessories shown are for representation only. The length and width of the Unit and balcony varies depending on which floor and which orientation the unit is located within the building to comply with the building authority regulations. Apartment unit sizes may vary. Actual unit sizes will be reflected on the Sales and Purchase Agreement.

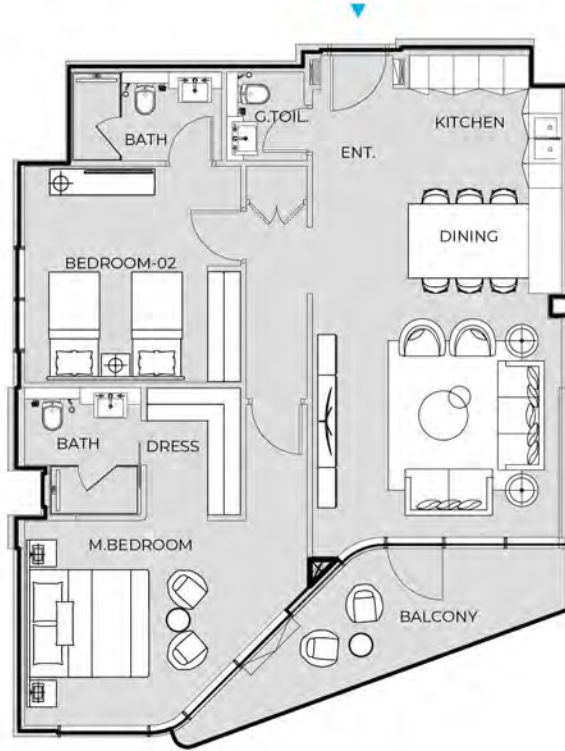


UNIT 305

2 BEDROOM TYPE A

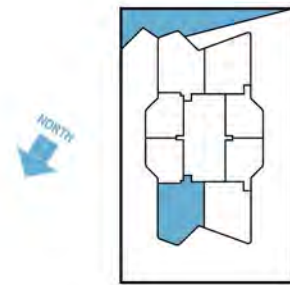
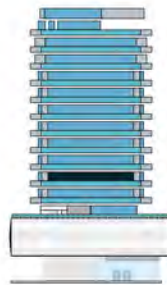
COASTAL HAVEN

BY PRESTIGE HARBOUR



UNIT SIZE

UNIT AREA	1,071.65FT ²
BALCONY AREA	128.74FT ²
TOTAL AREA	1,200.39FT ²





**COASTAL
HAVEN**
BY PRESTIGE HARBOUR

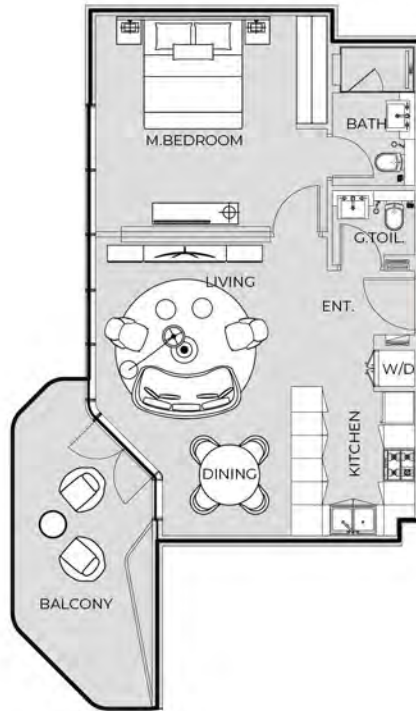
PRESTIGE ONE

UNIT 306

1 BEDROOM TYPE C

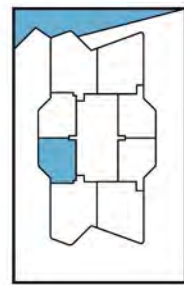
**COASTAL
HAVEN**

BY PRESTIGE HARBOUR



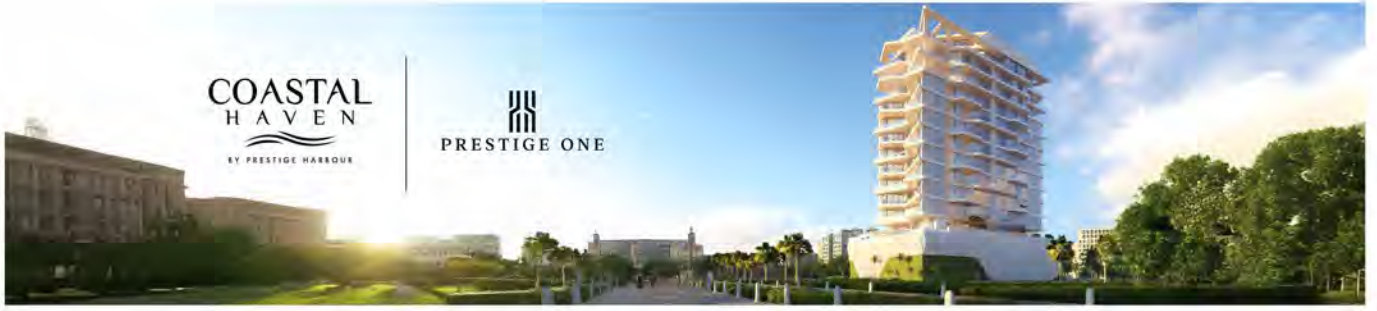
UNIT SIZE

UNIT AREA	671.78FT ²
BALCONY AREA	156.94FT ²
TOTAL AREA	828.71FT ²



PRESTIGE ONE

All drawings and dimensions are approximate. Drawings are not to scale and are subject to change without notice. The developer reserves the right to make revisions. The units are measured at typical floor in the building and columns may vary in size depending on the floor level. The furnishings and accessories shown are for representation only. The length and width of the Unit and balcony varies depending on which floor and which orientation the unit is located within the building to comply with the building authority regulations. Apartment unit sizes may vary. Actual unit sizes will be reflected on the Sales and Purchase Agreement.



**COASTAL
HAVEN**
BY PRESTIGE HARBOUR

PRESTIGE ONE

UNIT 307

1 BEDROOM TYPE C

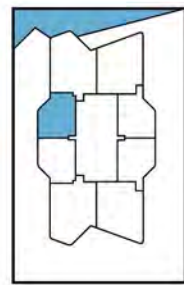
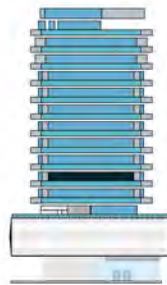
**COASTAL
HAVEN**

BY PRESTIGE HARBOUR



UNIT SIZE

UNIT AREA	673.39FT ²
BALCONY AREA	156.94FT ²
TOTAL AREA	830.33FT ²



PRESTIGE ONE

All drawings and dimensions are approximate. Drawings are not to scale and are subject to change without notice. The developer reserves the right to make revisions. The units are measured at typical floor in the building and columns may vary in size depending on the floor level. The furnishings and accessories shown are for representation only. The length and width of the Unit and balcony varies depending on which floor and which orientation the unit is located within the building to comply with the building authority regulations. Apartment unit sizes may vary. Actual unit sizes will be reflected on the Sales and Purchase Agreement.



**COASTAL
HAVEN**
BY PRESTIGE HARBOUR

PRESTIGE ONE

UNIT 308

2 BEDROOM TYPE A

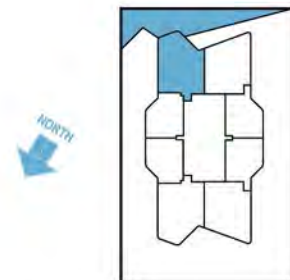
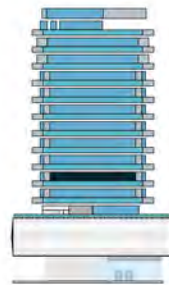
**COASTAL
HAVEN**

BY PRESTIGE HARBOUR



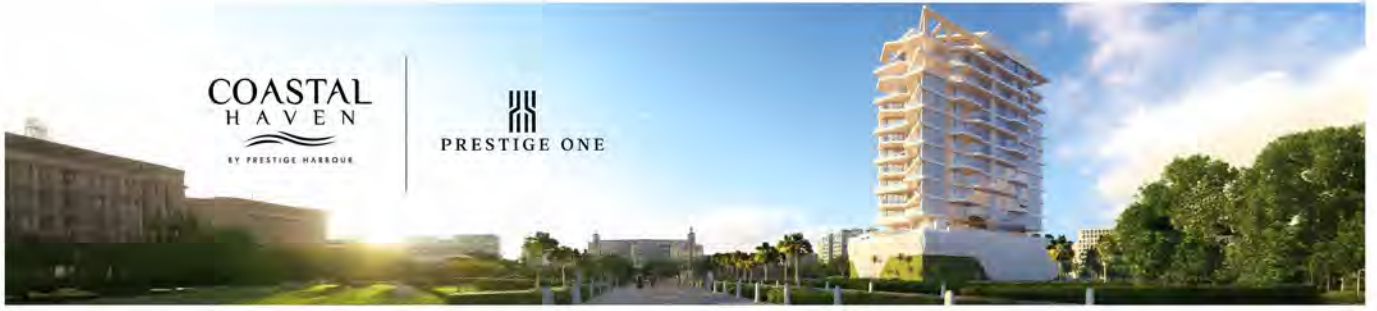
UNIT SIZE

UNIT AREA	1,071.65FT ²
BALCONY AREA	128.74FT ²
TOTAL AREA	1,200.39FT ²



PRESTIGE ONE

All drawings and dimensions are approximate. Drawings are not to scale and are subject to change without notice. The developer reserves the right to make revisions. The units are measured at typical floor in the building and columns may vary in size depending on the floor level. The furnishings and accessories shown are for representation only. The length and width of the Unit and balcony varies depending on which floor and which orientation the unit is located within the building to comply with the building authority regulations. Apartment unit sizes may vary. Actual unit sizes will be reflected on the Sales and Purchase Agreement.



**COASTAL
HAVEN**
BY PRESTIGE HARBOUR

PRESTIGE ONE

UNIT 401

2 BEDROOM TYPE A

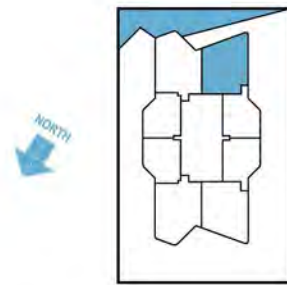
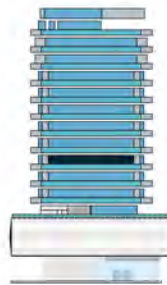
**COASTAL
HAVEN**

BY PRESTIGE HARBOUR



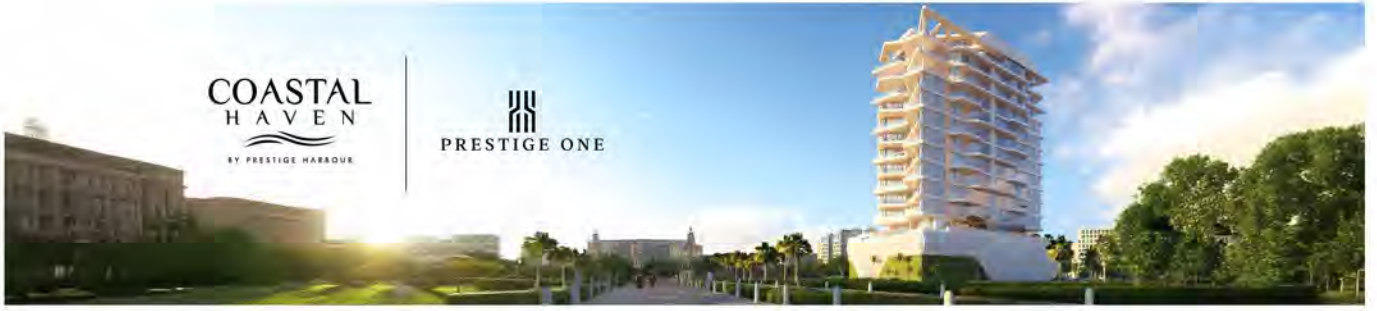
UNIT SIZE

UNIT AREA	1,071.44FT ²
BALCONY AREA	129.27FT ²
TOTAL AREA	1,200.71FT ²



PRESTIGE ONE

All drawings and dimensions are approximate. Drawings are not to scale and are subject to change without notice. The developer reserves the right to make revisions. The units are measured at typical floor in the building and columns may vary in size depending on the floor level. The furnishings and accessories shown are for representation only. The length and width of the Unit and balcony varies depending on which floor and which orientation the unit is located within the building to comply with the building authority regulations. Apartment unit sizes may vary. Actual unit sizes will be reflected on the Sales and Purchase Agreement.



**COASTAL
HAVEN**
BY PRESTIGE HARBOUR

PRESTIGE ONE

UNIT 402

1 BEDROOM TYPE A

**COASTAL
HAVEN**

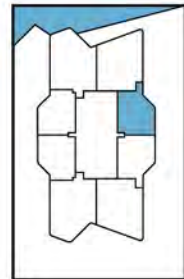
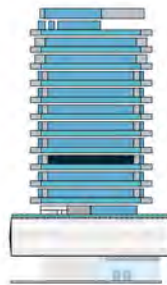


BY PRESTIGE HARBOUR



UNIT SIZE

UNIT AREA	673.39FT ²
BALCONY AREA	136.27FT ²
TOTAL AREA	809.66FT ²



PRESTIGE ONE

All drawings and dimensions are approximate. Drawings are not to scale and are subject to change without notice. The developer reserves the right to make revisions. The units are measured at typical floor in the building and columns may vary in size depending on the floor level. The furnishings and accessories shown are for representation only. The length and width of the Unit and balcony varies depending on which floor and which orientation the unit is located within the building to comply with the building authority regulations. Apartment unit sizes may vary. Actual unit sizes will be reflected on the Sales and Purchase Agreement.



COASTAL
HAVEN
BY PRESTIGE HARBOUR

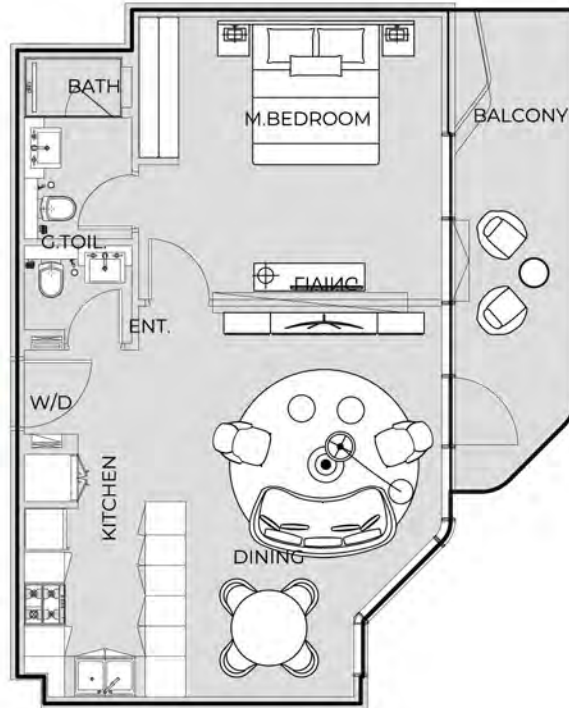
PRESTIGE ONE

UNIT 403

1 BEDROOM TYPE A

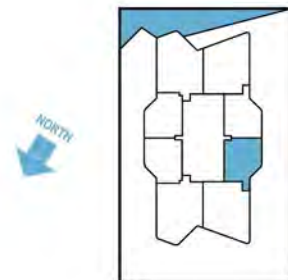
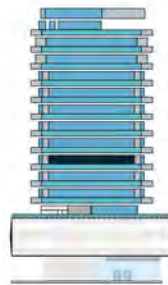
COASTAL
HAVEN

BY PRESTIGE HARBOUR



UNIT SIZE

UNIT AREA	673.39FT ²
BALCONY AREA	136.27FT ²
TOTAL AREA	809.66FT ²



PRESTIGE ONE

All drawings and dimensions are approximate. Drawings are not to scale and are subject to change without notice. The developer reserves the right to make revisions. The units are measured at typical floor in the building and columns may vary in size depending on the floor level. The furnishings and accessories shown are for representation only. The length and width of the Unit and balcony varies depending on which floor and which orientation the unit is located within the building to comply with the building authority regulations. Apartment unit sizes may vary. Actual unit sizes will be reflected on the Sales and Purchase Agreement.



**COASTAL
HAVEN**
BY PRESTIGE HARBOUR

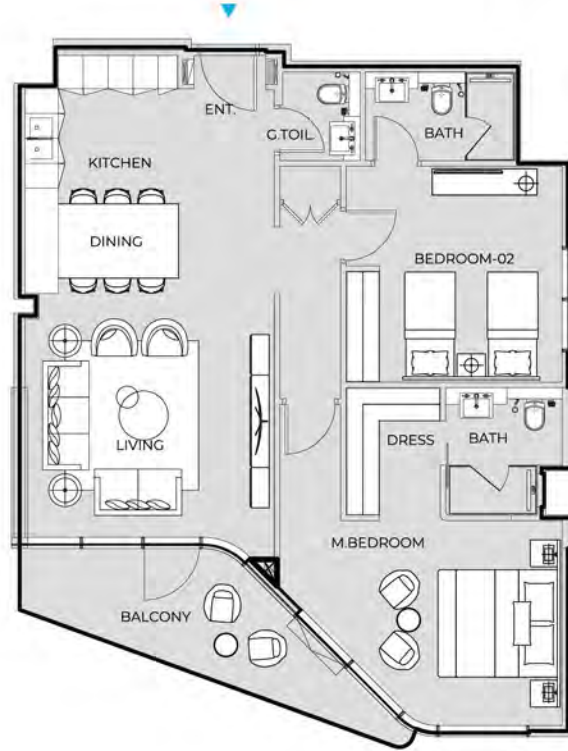
PRESTIGE ONE

UNIT 404

2 BEDROOM TYPE A

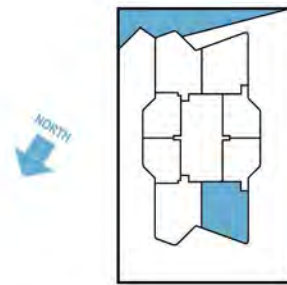
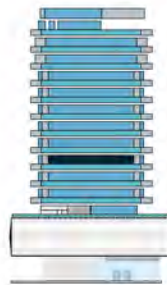
**COASTAL
HAVEN**

BY PRESTIGE HARBOUR



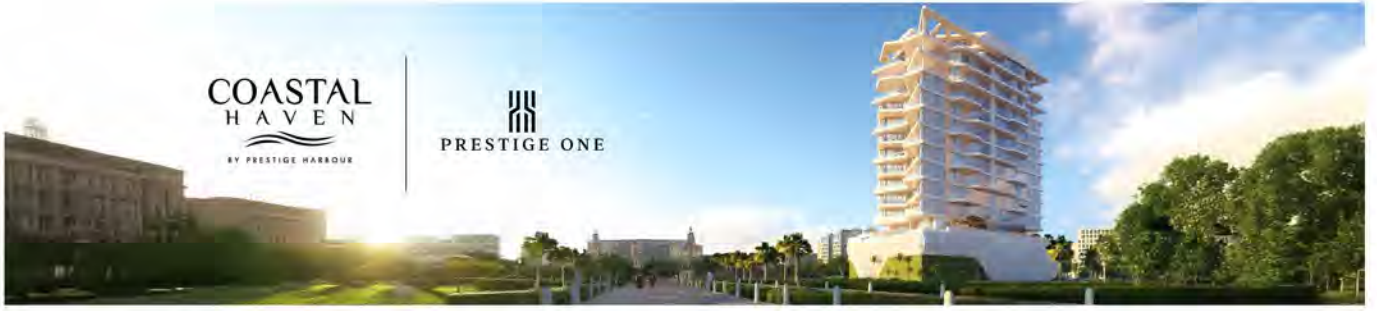
UNIT SIZE

UNIT AREA	1,071.44FT ²
BALCONY AREA	129.27FT ²
TOTAL AREA	1,200.71FT ²



PRESTIGE ONE

All drawings and dimensions are approximate. Drawings are not to scale and are subject to change without notice. The developer reserves the right to make revisions. The units are measured at typical floor in the building and columns may vary in size depending on the floor level. The furnishings and accessories shown are for representation only. The length and width of the Unit and balcony varies depending on which floor and which orientation the unit is located within the building to comply with the building authority regulations. Apartment unit sizes may vary. Actual unit sizes will be reflected on the Sales and Purchase Agreement.



**COASTAL
HAVEN**
BY PRESTIGE HARBOUR

PRESTIGE ONE

UNIT 405

2 BEDROOM TYPE B

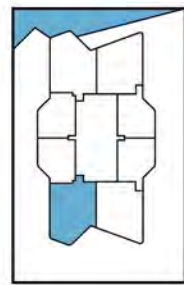
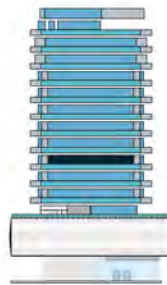
**COASTAL
HAVEN**

BY PRESTIGE HARBOUR



UNIT SIZE

UNIT AREA	1,071.44FT ²
BALCONY AREA	172.65FT ²
TOTAL AREA	1,244.09FT ²



PRESTIGE ONE

All drawings and dimensions are approximate. Drawings are not to scale and are subject to change without notice. The developer reserves the right to make revisions. The units are measured at typical floor in the building and columns may vary in size depending on the floor level. The furnishings and accessories shown are for representation only. The length and width of the Unit and balcony varies depending on which floor and which orientation the unit is located within the building to comply with the building authority regulations. Apartment unit sizes may vary. Actual unit sizes will be reflected on the Sales and Purchase Agreement.



**COASTAL
HAVEN**
BY PRESTIGE HARBOUR

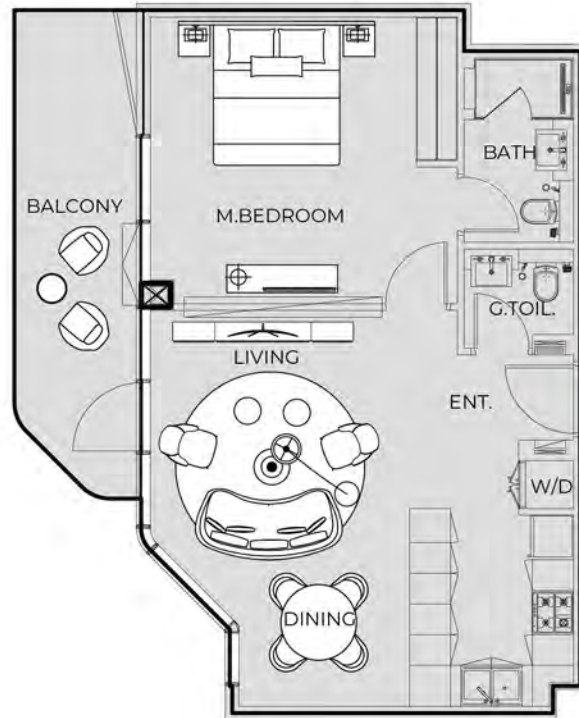
PRESTIGE ONE

UNIT 406

1 BEDROOM TYPE B

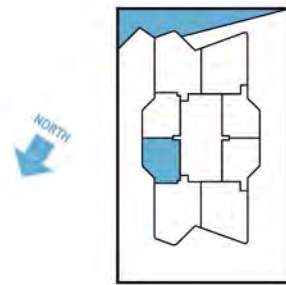
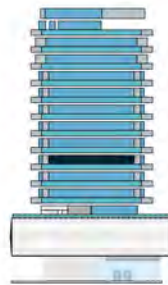
**COASTAL
HAVEN**

BY PRESTIGE HARBOUR



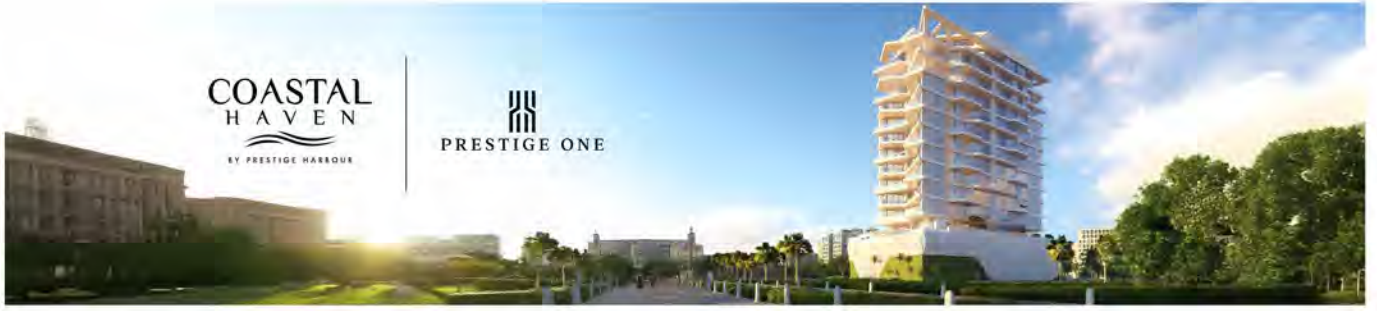
UNIT SIZE

UNIT AREA	671.78FT ²
BALCONY AREA	136.27FT ²
TOTAL AREA	808.05FT ²



PRESTIGE ONE

All drawings and dimensions are approximate. Drawings are not to scale and are subject to change without notice. The developer reserves the right to make revisions. The units are measured at typical floor in the building and columns may vary in size depending on the floor level. The furnishings and accessories shown are for representation only. The length and width of the Unit and balcony varies depending on which floor and which orientation the unit is located within the building to comply with the building authority regulations. Apartment unit sizes may vary. Actual unit sizes will be reflected on the Sales and Purchase Agreement.



COASTAL
HAVEN
BY PRESTIGE HARBOUR

PRESTIGE ONE

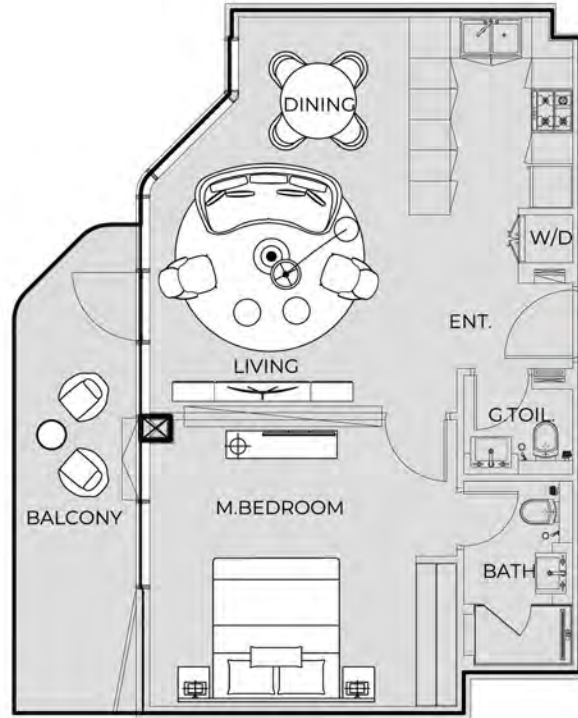
UNIT 407

1 BEDROOM TYPE B

COASTAL
HAVEN

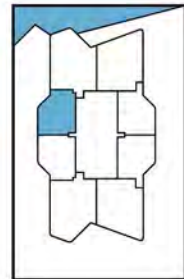
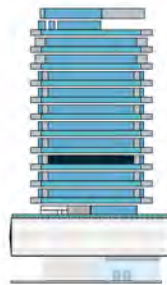


BY PRESTIGE HARBOUR



UNIT SIZE

UNIT AREA	673.39FT ²
BALCONY AREA	136.27FT ²
TOTAL AREA	809.66FT ²



PRESTIGE ONE

All drawings and dimensions are approximate. Drawings are not to scale and are subject to change without notice. The developer reserves the right to make revisions. The units are measured at typical floor in the building and columns may vary in size depending on the floor level. The furnishings and accessories shown are for representation only. The length and width of the Unit and balcony varies depending on which floor and which orientation the unit is located within the building to comply with the building authority regulations. Apartment unit sizes may vary. Actual unit sizes will be reflected on the Sales and Purchase Agreement.



COASTAL
HAVEN
BY PRESTIGE HARBOUR

PRESTIGE ONE

UNIT 408

2 BEDROOM TYPE B

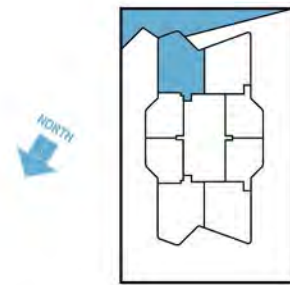
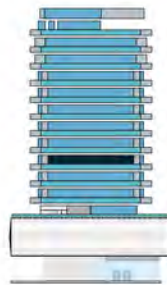
COASTAL
HAVEN

BY PRESTIGE HARBOUR



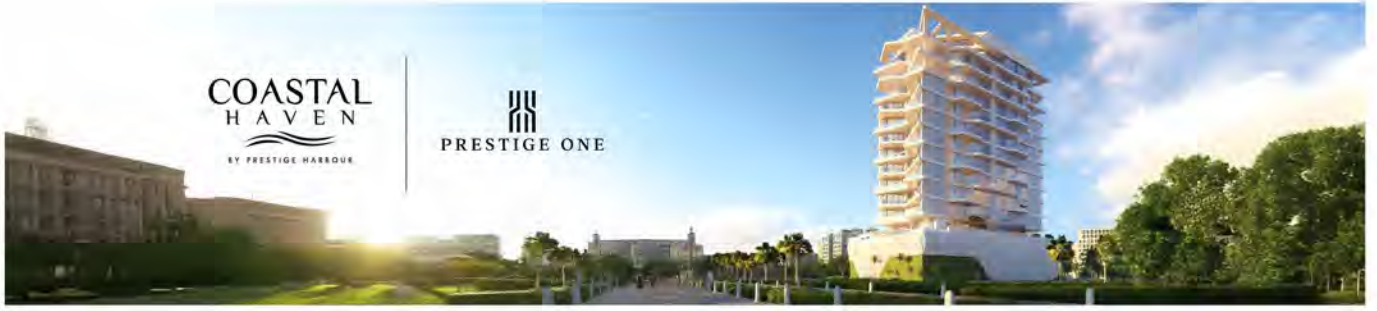
UNIT SIZE

UNIT AREA	1,071.44FT ²
BALCONY AREA	172.65FT ²
TOTAL AREA	1,244.09FT ²



PRESTIGE ONE

All drawings and dimensions are approximate. Drawings are not to scale and are subject to change without notice. The developer reserves the right to make revisions. The units are measured at typical floor in the building and columns may vary in size depending on the floor level. The furnishings and accessories shown are for representation only. The length and width of the Unit and balcony varies depending on which floor and which orientation the unit is located within the building to comply with the building authority regulations. Apartment unit sizes may vary. Actual unit sizes will be reflected on the Sales and Purchase Agreement.



**COASTAL
HAVEN**
BY PRESTIGE HARBOUR

PRESTIGE ONE

UNIT 501

2 BEDROOM TYPE B

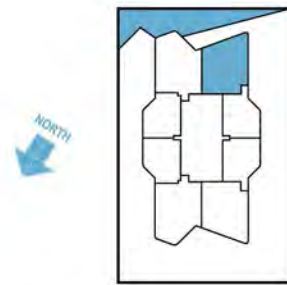
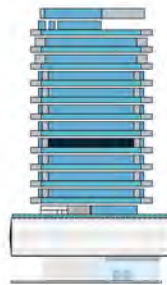
**COASTAL
HAVEN**

BY PRESTIGE HARBOUR



UNIT SIZE

UNIT AREA	1,071.65FT ²
BALCONY AREA	172.22FT ²
TOTAL AREA	1,243.88FT ²



PRESTIGE ONE

All drawings and dimensions are approximate. Drawings are not to scale and are subject to change without notice. The developer reserves the right to make revisions. The units are measured at typical floor in the building and columns may vary in size depending on the floor level. The furnishings and accessories shown are for representation only. The length and width of the Unit and balcony varies depending on which floor and which orientation the unit is located within the building to comply with the building authority regulations. Apartment unit sizes may vary. Actual unit sizes will be reflected on the Sales and Purchase Agreement.



**COASTAL
HAVEN**
BY PRESTIGE HARBOUR

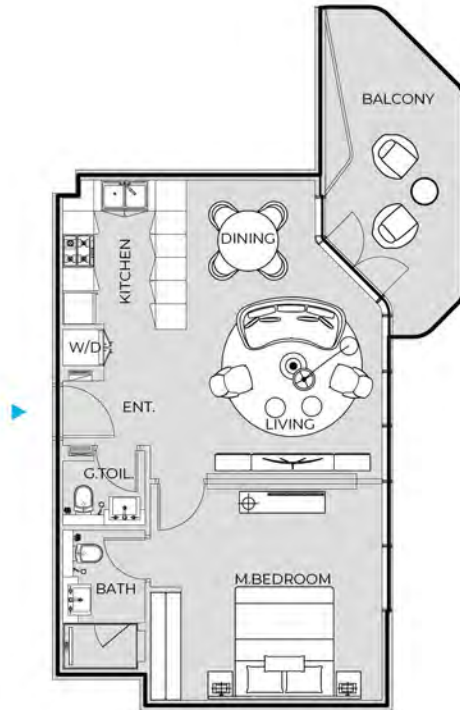
PRESTIGE ONE

UNIT 502

1 BEDROOM TYPE C

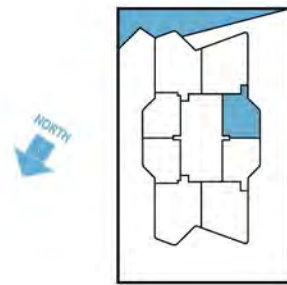
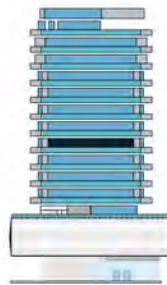
**COASTAL
HAVEN**

BY PRESTIGE HARBOUR



UNIT SIZE

UNIT AREA	673.39FT ²
BALCONY AREA	156.94FT ²
TOTAL AREA	830.33FT ²



PRESTIGE ONE

All drawings and dimensions are approximate. Drawings are not to scale and are subject to change without notice. The developer reserves the right to make revisions. The units are measured at typical floor in the building and columns may vary in size depending on the floor level. The furnishings and accessories shown are for representation only. The length and width of the Unit and balcony varies depending on which floor and which orientation the unit is located within the building to comply with the building authority regulations. Apartment unit sizes may vary. Actual unit sizes will be reflected on the Sales and Purchase Agreement.



COASTAL
HAVEN
BY PRESTIGE HARBOUR

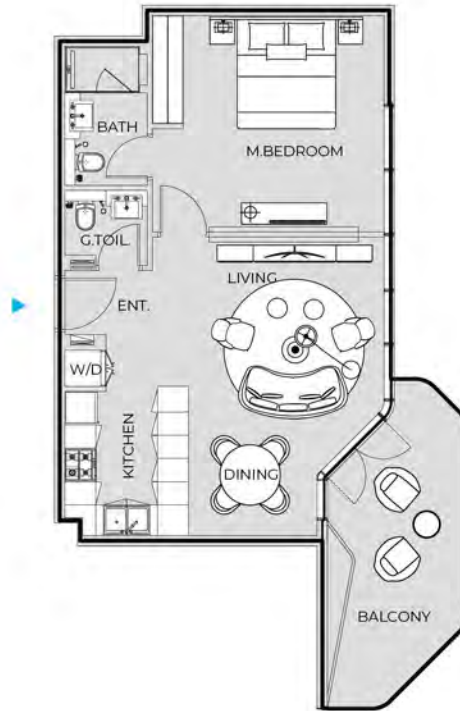
PRESTIGE ONE

UNIT 503

1 BEDROOM TYPE C

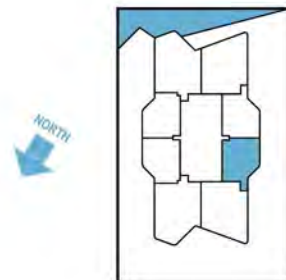
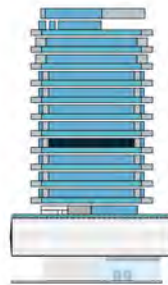
COASTAL
HAVEN

BY PRESTIGE HARBOUR



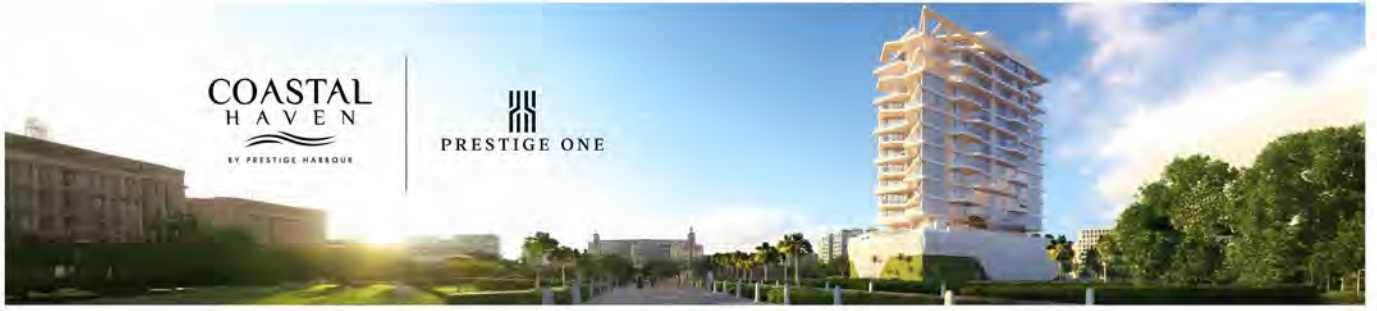
UNIT SIZE

UNIT AREA	673.39FT ²
BALCONY AREA	156.94FT ²
TOTAL AREA	830.33FT ²



PRESTIGE ONE

All drawings and dimensions are approximate. Drawings are not to scale and are subject to change without notice. The developer reserves the right to make revisions. The units are measured at typical floor in the building and columns may vary in size depending on the floor level. The furnishings and accessories shown are for representation only. The length and width of the Unit and balcony varies depending on which floor and which orientation the unit is located within the building to comply with the building authority regulations. Apartment unit sizes may vary. Actual unit sizes will be reflected on the Sales and Purchase Agreement.



COASTAL
HAVEN
BY PRESTIGE HARBOUR

PRESTIGE ONE

UNIT 504

2 BEDROOM TYPE B

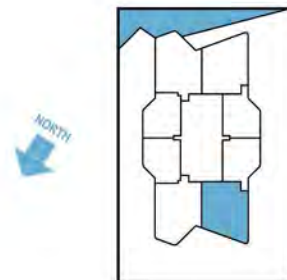
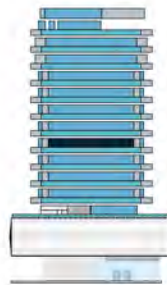
COASTAL
HAVEN

BY PRESTIGE HARBOUR



UNIT SIZE

UNIT AREA	1,071.65FT ²
BALCONY AREA	172.11FT ²
TOTAL AREA	1,243.77FT ²



PRESTIGE ONE

All drawings and dimensions are approximate. Drawings are not to scale and are subject to change without notice. The developer reserves the right to make revisions. The units are measured at typical floor in the building and columns may vary in size depending on the floor level. The furnishings and accessories shown are for representation only. The length and width of the Unit and balcony varies depending on which floor and which orientation the unit is located within the building to comply with the building authority regulations. Apartment unit sizes may vary. Actual unit sizes will be reflected on the Sales and Purchase Agreement.



**COASTAL
HAVEN**
BY PRESTIGE HARBOUR

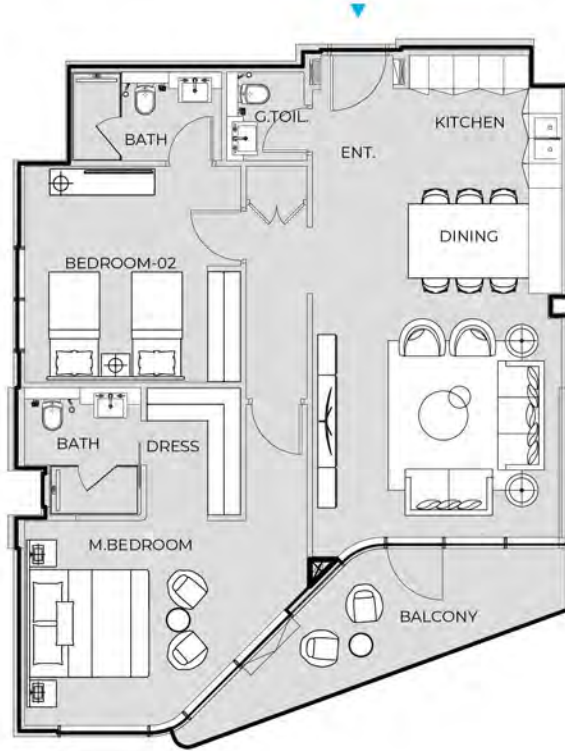
PRESTIGE ONE

UNIT 505

2 BEDROOM TYPE A

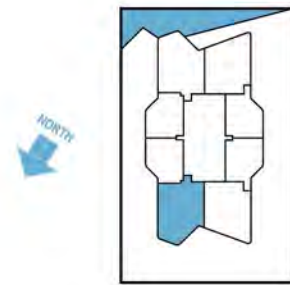
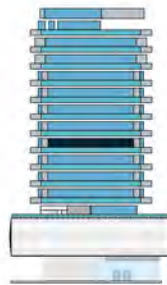
**COASTAL
HAVEN**

BY PRESTIGE HARBOUR



UNIT SIZE

UNIT AREA	1,071.65FT ²
BALCONY AREA	128.74FT ²
TOTAL AREA	1,200.39FT ²



PRESTIGE ONE

All drawings and dimensions are approximate. Drawings are not to scale and are subject to change without notice. The developer reserves the right to make revisions. The units are measured at typical floor in the building and columns may vary in size depending on the floor level. The furnishings and accessories shown are for representation only. The length and width of the Unit and balcony varies depending on which floor and which orientation the unit is located within the building to comply with the building authority regulations. Apartment unit sizes may vary. Actual unit sizes will be reflected on the Sales and Purchase Agreement.



**COASTAL
HAVEN**
BY PRESTIGE HARBOUR

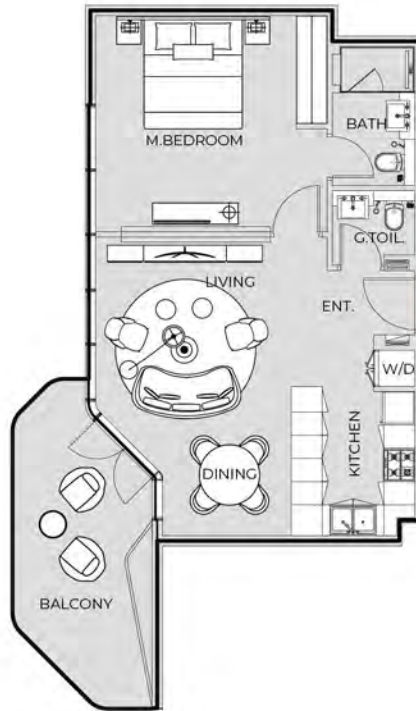
PRESTIGE ONE

UNIT 506

1 BEDROOM TYPE C

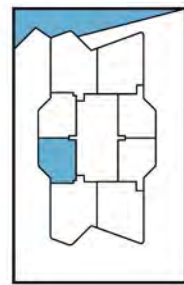
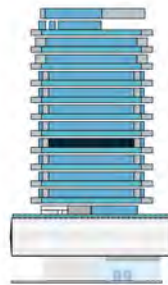
**COASTAL
HAVEN**

BY PRESTIGE HARBOUR



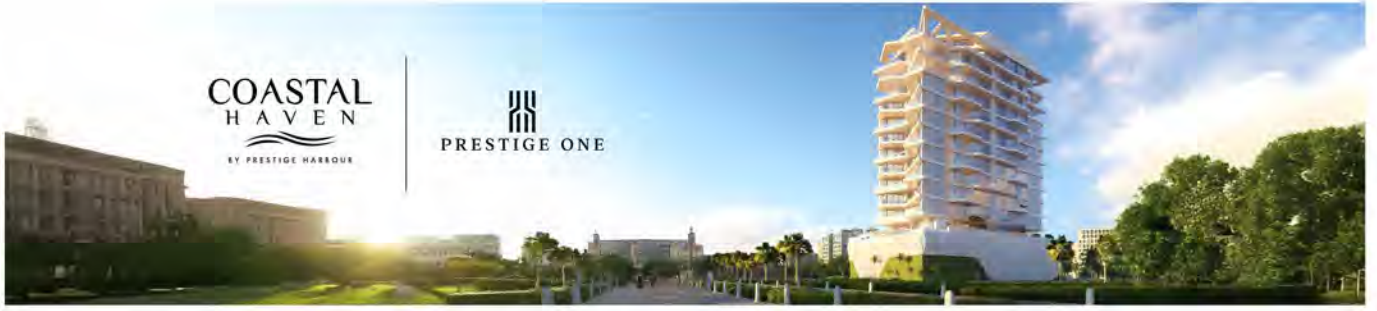
UNIT SIZE

UNIT AREA	671.78FT ²
BALCONY AREA	156.94FT ²
TOTAL AREA	828.71FT ²



PRESTIGE ONE

All drawings and dimensions are approximate. Drawings are not to scale and are subject to change without notice. The developer reserves the right to make revisions. The units are measured at typical floor in the building and columns may vary in size depending on the floor level. The furnishings and accessories shown are for representation only. The length and width of the Unit and balcony varies depending on which floor and which orientation the unit is located within the building to comply with the building authority regulations. Apartment unit sizes may vary. Actual unit sizes will be reflected on the Sales and Purchase Agreement.



**COASTAL
HAVEN**
BY PRESTIGE HARBOUR

PRESTIGE ONE

UNIT 507

1 BEDROOM TYPE C

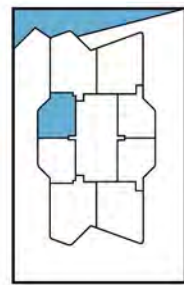
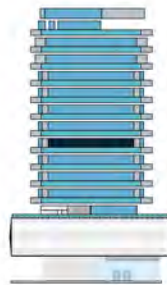
**COASTAL
HAVEN**

BY PRESTIGE HARBOUR



UNIT SIZE

UNIT AREA	673.39FT ²
BALCONY AREA	156.94FT ²
TOTAL AREA	830.33FT ²



PRESTIGE ONE

All drawings and dimensions are approximate. Drawings are not to scale and are subject to change without notice. The developer reserves the right to make revisions. The units are measured at typical floor in the building and columns may vary in size depending on the floor level. The furnishings and accessories shown are for representation only. The length and width of the Unit and balcony varies depending on which floor and which orientation the unit is located within the building to comply with the building authority regulations. Apartment unit sizes may vary. Actual unit sizes will be reflected on the Sales and Purchase Agreement.



COASTAL
HAVEN
BY PRESTIGE HARBOUR

PRESTIGE ONE

UNIT 508

2 BEDROOM TYPE A

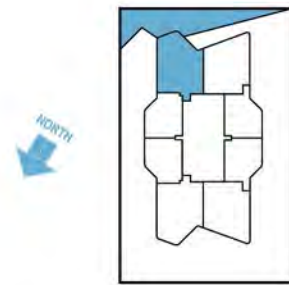
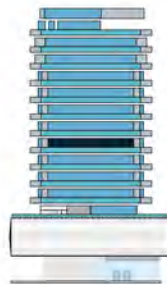
COASTAL
HAVEN

BY PRESTIGE HARBOUR



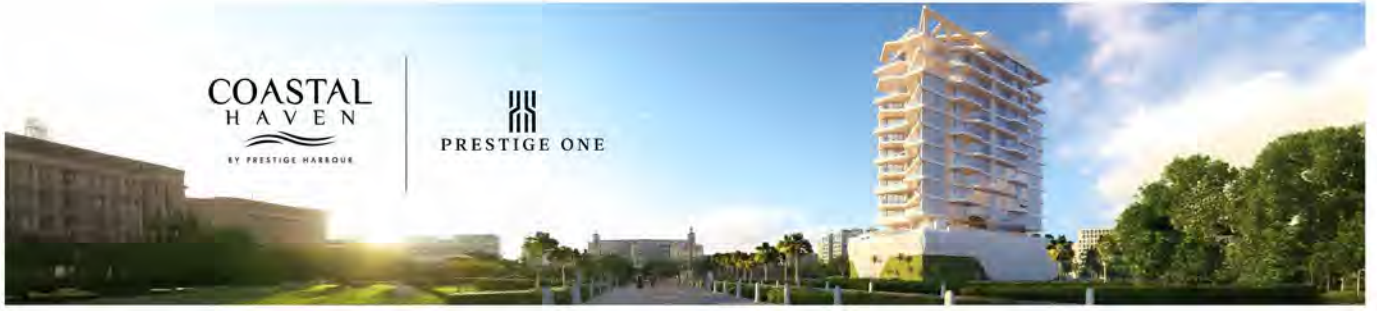
UNIT SIZE

UNIT AREA	1,071.65FT ²
BALCONY AREA	128.74FT ²
TOTAL AREA	1,200.39FT ²



PRESTIGE ONE

All drawings and dimensions are approximate. Drawings are not to scale and are subject to change without notice. The developer reserves the right to make revisions. The units are measured at typical floor in the building and columns may vary in size depending on the floor level. The furnishings and accessories shown are for representation only. The length and width of the Unit and balcony varies depending on which floor and which orientation the unit is located within the building to comply with the building authority regulations. Apartment unit sizes may vary. Actual unit sizes will be reflected on the Sales and Purchase Agreement.



**COASTAL
HAVEN**
BY PRESTIGE HARBOUR

PRESTIGE ONE

UNIT 601

2 BEDROOM TYPE A

**COASTAL
HAVEN**

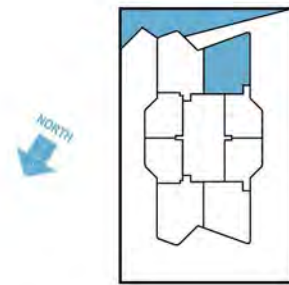
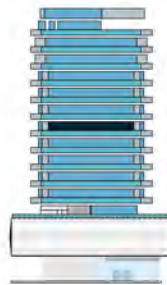


BY PRESTIGE HARBOUR



UNIT SIZE

UNIT AREA	1,071.44FT ²
BALCONY AREA	129.27FT ²
TOTAL AREA	1,200.71FT ²



PRESTIGE ONE

All drawings and dimensions are approximate. Drawings are not to scale and are subject to change without notice. The developer reserves the right to make revisions. The units are measured at typical floor in the building and columns may vary in size depending on the floor level. The furnishings and accessories shown are for representation only. The length and width of the Unit and balcony varies depending on which floor and which orientation the unit is located within the building to comply with the building authority regulations. Apartment unit sizes may vary. Actual unit sizes will be reflected on the Sales and Purchase Agreement.



UNIT 602

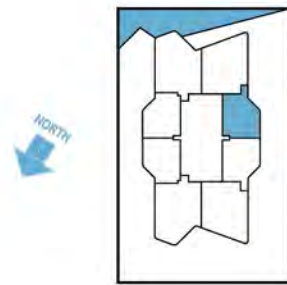
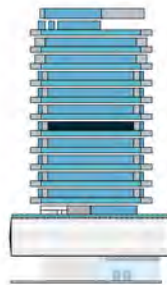
1 BEDROOM TYPE A

COASTAL HAVEN
BY PRESTIGE HARBOUR



UNIT SIZE

UNIT AREA	673.39FT ²
BALCONY AREA	136.27FT ²
TOTAL AREA	809.66FT ²





COASTAL
HAVEN
BY PRESTIGE HARBOUR

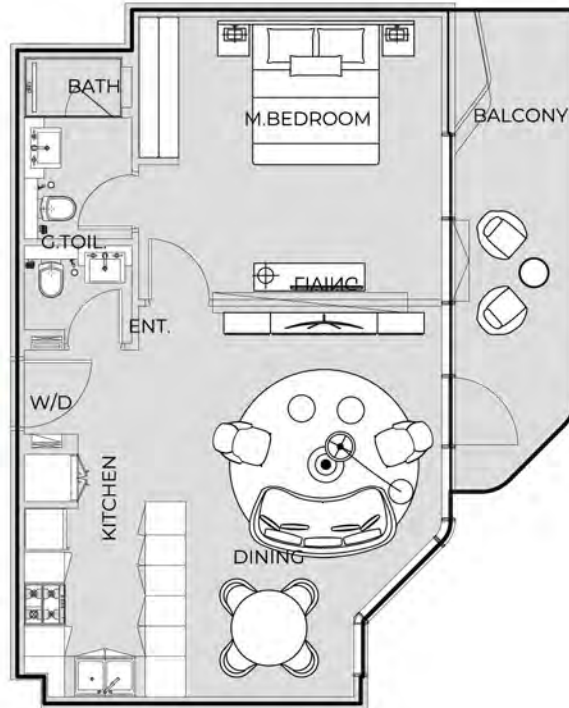
PRESTIGE ONE

UNIT 603

1 BEDROOM TYPE A

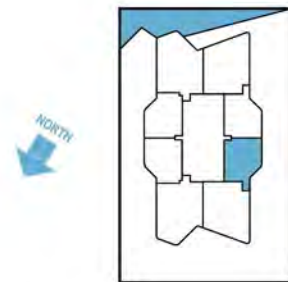
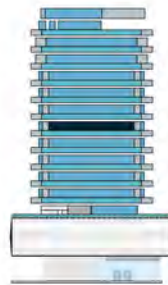
COASTAL
HAVEN

BY PRESTIGE HARBOUR



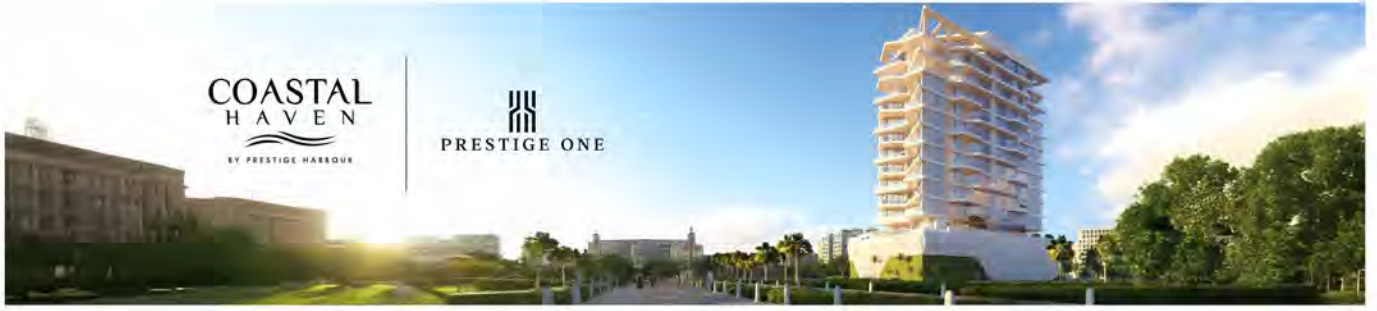
UNIT SIZE

UNIT AREA	673.39FT ²
BALCONY AREA	136.27FT ²
TOTAL AREA	809.66FT ²



PRESTIGE ONE

All drawings and dimensions are approximate. Drawings are not to scale and are subject to change without notice. The developer reserves the right to make revisions. The units are measured at typical floor in the building and columns may vary in size depending on the floor level. The furnishings and accessories shown are for representation only. The length and width of the Unit and balcony varies depending on which floor and which orientation the unit is located within the building to comply with the building authority regulations. Apartment unit sizes may vary. Actual unit sizes will be reflected on the Sales and Purchase Agreement.



COASTAL
HAVEN
BY PRESTIGE HARBOUR

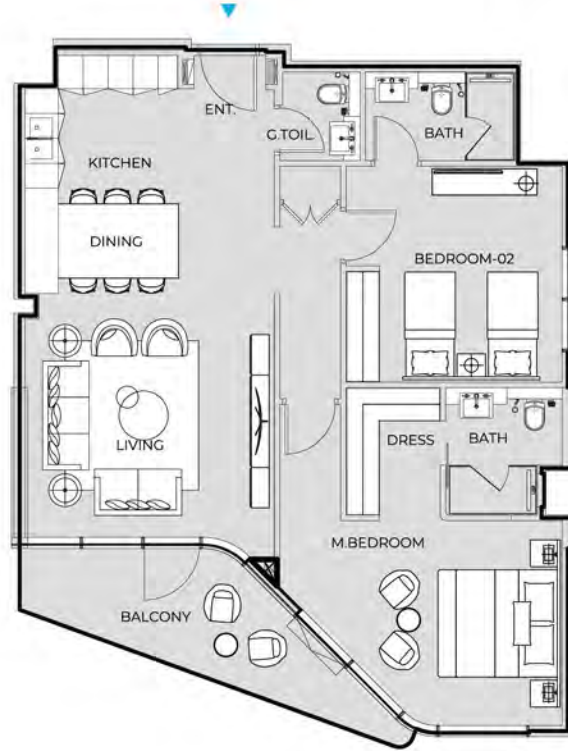
PRESTIGE ONE

UNIT 604

2 BEDROOM TYPE A

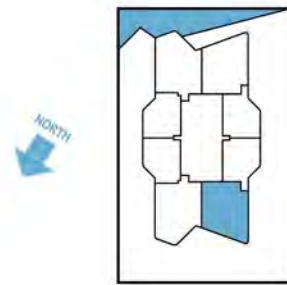
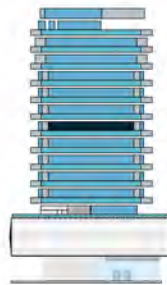
COASTAL
HAVEN

BY PRESTIGE HARBOUR



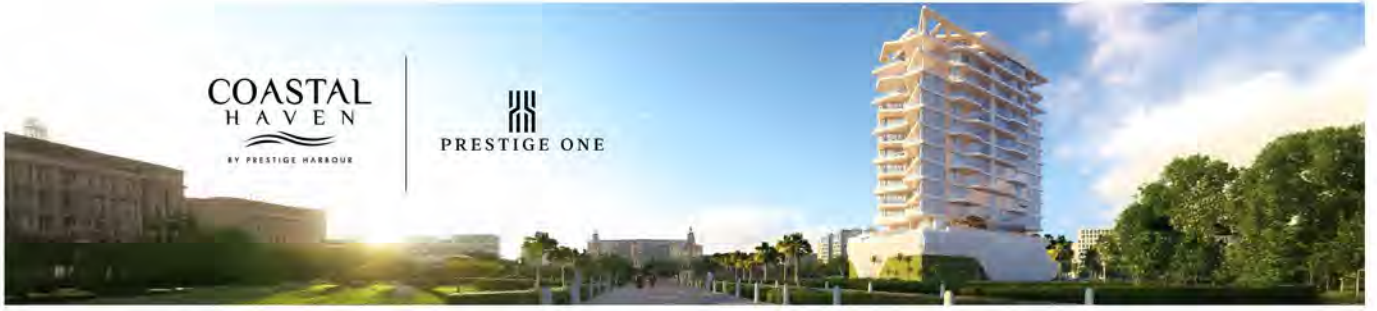
UNIT SIZE

UNIT AREA	1,071.44FT ²
BALCONY AREA	129.27FT ²
TOTAL AREA	1,200.71FT ²



PRESTIGE ONE

All drawings and dimensions are approximate. Drawings are not to scale and are subject to change without notice. The developer reserves the right to make revisions. The units are measured at typical floor in the building and columns may vary in size depending on the floor level. The furnishings and accessories shown are for representation only. The length and width of the Unit and balcony varies depending on which floor and which orientation the unit is located within the building to comply with the building authority regulations. Apartment unit sizes may vary. Actual unit sizes will be reflected on the Sales and Purchase Agreement.



**COASTAL
HAVEN**
BY PRESTIGE HARBOUR

PRESTIGE ONE

UNIT 605

2 BEDROOM TYPE B

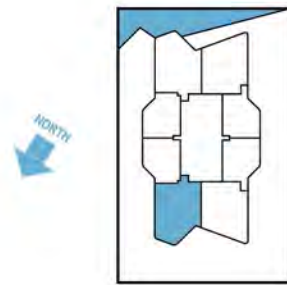
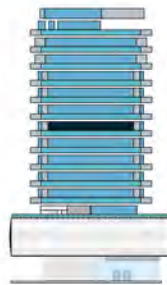
**COASTAL
HAVEN**

BY PRESTIGE HARBOUR



UNIT SIZE

UNIT AREA	1,071.44FT ²
BALCONY AREA	172.65FT ²
TOTAL AREA	1,244.09FT ²



PRESTIGE ONE

All drawings and dimensions are approximate. Drawings are not to scale and are subject to change without notice. The developer reserves the right to make revisions. The units are measured at typical floor in the building and columns may vary in size depending on the floor level. The furnishings and accessories shown are for representation only. The length and width of the Unit and balcony varies depending on which floor and which orientation the unit is located within the building to comply with the building authority regulations. Apartment unit sizes may vary. Actual unit sizes will be reflected on the Sales and Purchase Agreement.



**COASTAL
HAVEN**
BY PRESTIGE HARBOUR

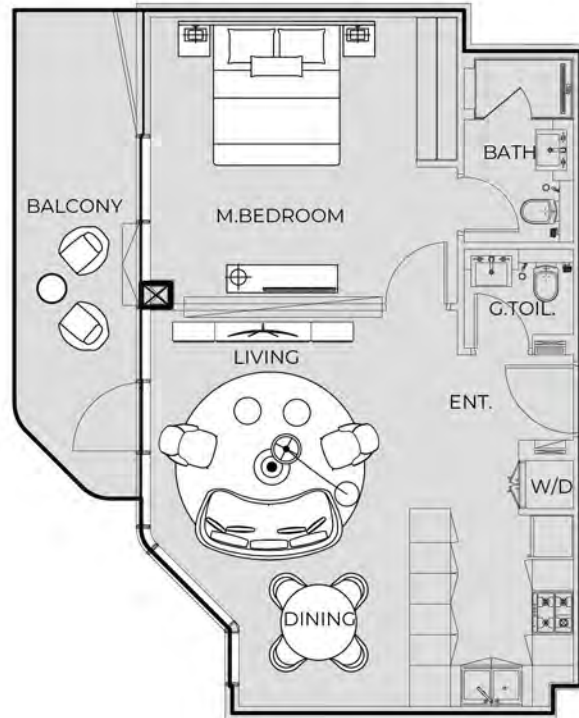
PRESTIGE ONE

UNIT 606

1 BEDROOM TYPE B

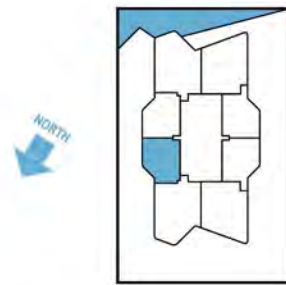
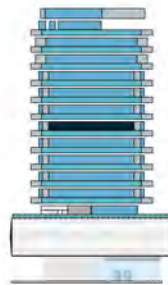
**COASTAL
HAVEN**

BY PRESTIGE HARBOUR



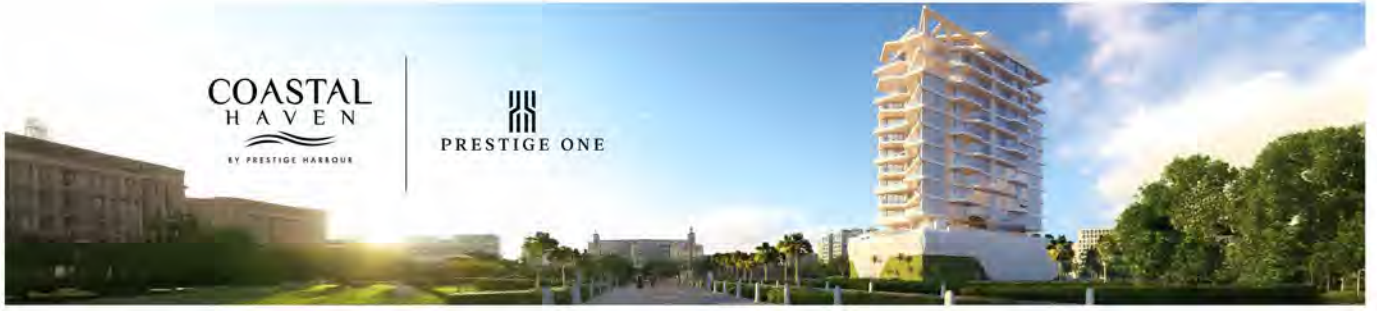
UNIT SIZE

UNIT AREA	671.78FT ²
BALCONY AREA	136.27FT ²
TOTAL AREA	808.05FT ²



PRESTIGE ONE

All drawings and dimensions are approximate. Drawings are not to scale and are subject to change without notice. The developer reserves the right to make revisions. The units are measured at typical floor in the building and columns may vary in size depending on the floor level. The furnishings and accessories shown are for representation only. The length and width of the Unit and balcony varies depending on which floor and which orientation the unit is located within the building to comply with the building authority regulations. Apartment unit sizes may vary. Actual unit sizes will be reflected on the Sales and Purchase Agreement.



COASTAL
HAVEN
BY PRESTIGE HARBOUR

PRESTIGE ONE

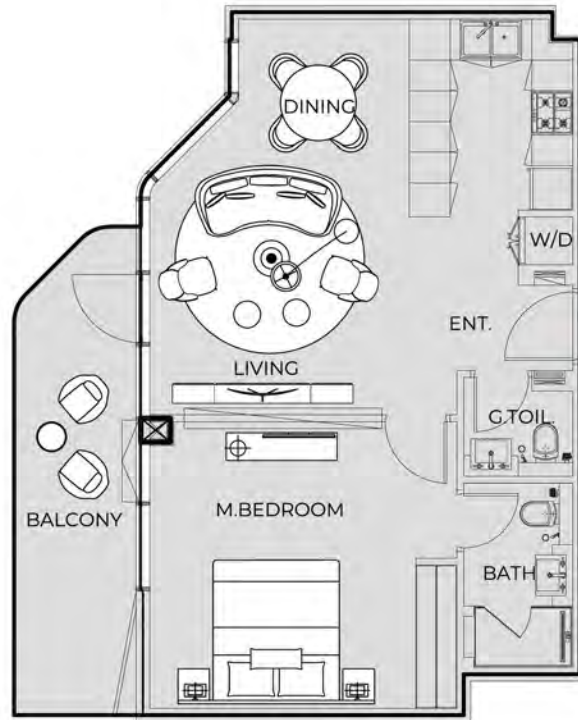
UNIT 607

1 BEDROOM TYPE B

COASTAL
HAVEN

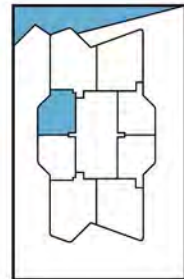
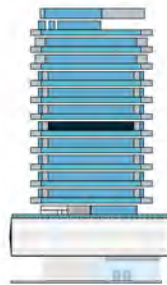


BY PRESTIGE HARBOUR



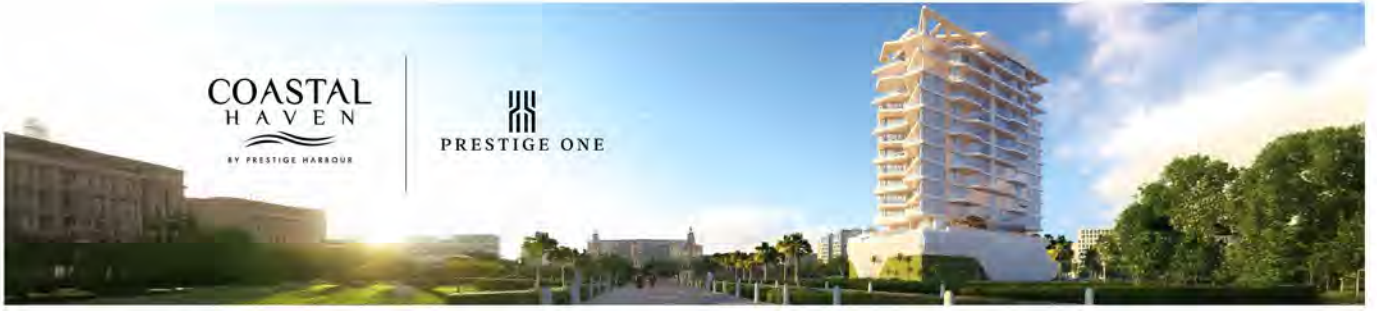
UNIT SIZE

UNIT AREA	673.39FT ²
BALCONY AREA	136.27FT ²
TOTAL AREA	809.66FT ²



PRESTIGE ONE

All drawings and dimensions are approximate. Drawings are not to scale and are subject to change without notice. The developer reserves the right to make revisions. The units are measured at typical floor in the building and columns may vary in size depending on the floor level. The furnishings and accessories shown are for representation only. The length and width of the Unit and balcony varies depending on which floor and which orientation the unit is located within the building to comply with the building authority regulations. Apartment unit sizes may vary. Actual unit sizes will be reflected on the Sales and Purchase Agreement.



COASTAL
HAVEN
BY PRESTIGE HARBOUR

PRESTIGE ONE

UNIT 608

2 BEDROOM TYPE B

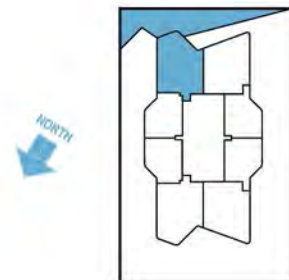
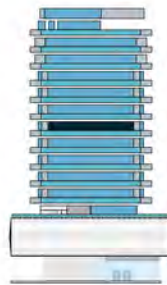
COASTAL
HAVEN

BY PRESTIGE HARBOUR



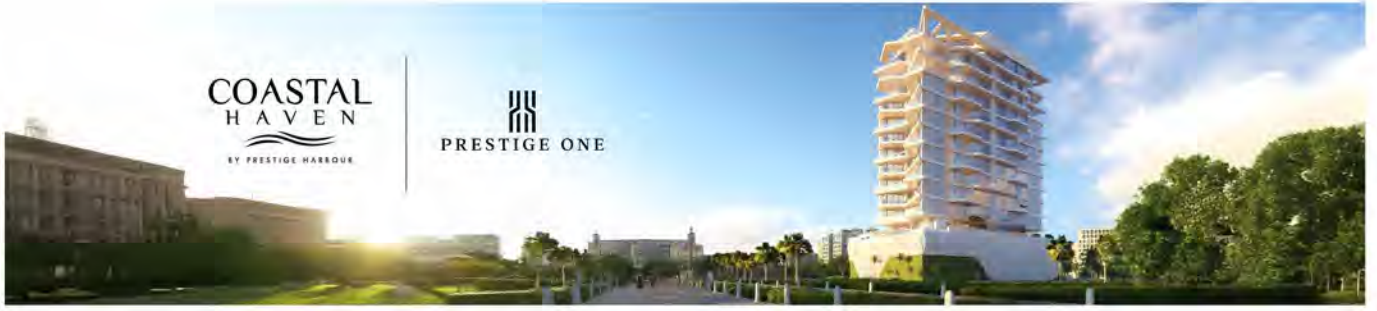
UNIT SIZE

UNIT AREA	1,071.44FT ²
BALCONY AREA	172.65FT ²
TOTAL AREA	1,244.09FT ²



PRESTIGE ONE

All drawings and dimensions are approximate. Drawings are not to scale and are subject to change without notice. The developer reserves the right to make revisions. The units are measured at typical floor in the building and columns may vary in size depending on the floor level. The furnishings and accessories shown are for representation only. The length and width of the Unit and balcony varies depending on which floor and which orientation the unit is located within the building to comply with the building authority regulations. Apartment unit sizes may vary. Actual unit sizes will be reflected on the Sales and Purchase Agreement.



**COASTAL
HAVEN**
BY PRESTIGE HARBOUR

PRESTIGE ONE

UNIT 701

2 BEDROOM TYPE B

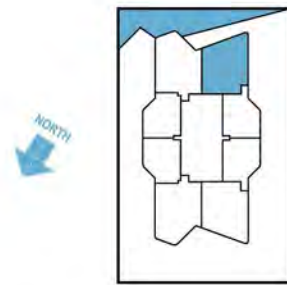
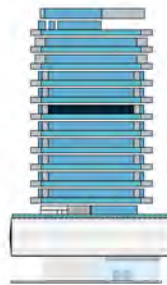
**COASTAL
HAVEN**

BY PRESTIGE HARBOUR



UNIT SIZE

UNIT AREA	1,071.65FT ²
BALCONY AREA	172.22FT ²
TOTAL AREA	1,243.88FT ²



PRESTIGE ONE

All drawings and dimensions are approximate. Drawings are not to scale and are subject to change without notice. The developer reserves the right to make revisions. The units are measured at typical floor in the building and columns may vary in size depending on the floor level. The furnishings and accessories shown are for representation only. The length and width of the Unit and balcony varies depending on which floor and which orientation the unit is located within the building to comply with the building authority regulations. Apartment unit sizes may vary. Actual unit sizes will be reflected on the Sales and Purchase Agreement.



COASTAL
HAVEN
BY PRESTIGE HARBOUR

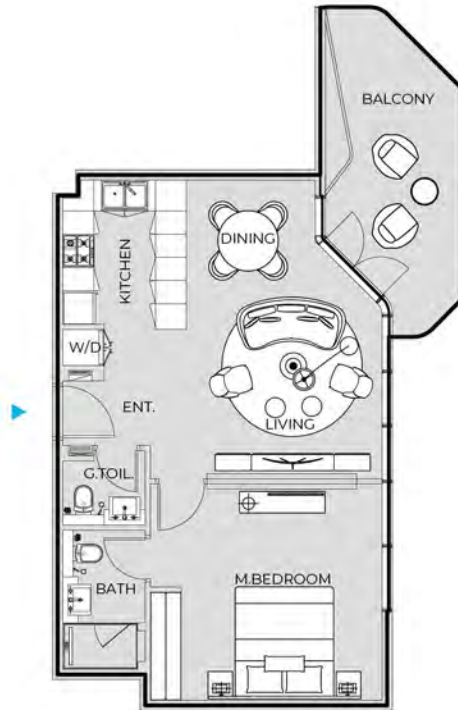
PRESTIGE ONE

UNIT 702

1 BEDROOM TYPE C

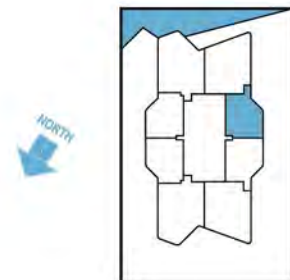
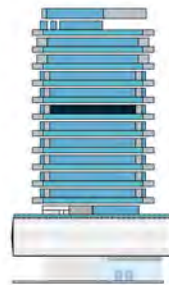
COASTAL
HAVEN

BY PRESTIGE HARBOUR



UNIT SIZE

UNIT AREA	673.39FT ²
BALCONY AREA	156.94FT ²
TOTAL AREA	830.33FT ²



PRESTIGE ONE

All drawings and dimensions are approximate. Drawings are not to scale and are subject to change without notice. The developer reserves the right to make revisions. The units are measured at typical floor in the building and columns may vary in size depending on the floor level. The furnishings and accessories shown are for representation only. The length and width of the Unit and balcony varies depending on which floor and which orientation the unit is located within the building to comply with the building authority regulations. Apartment unit sizes may vary. Actual unit sizes will be reflected on the Sales and Purchase Agreement.



COASTAL
HAVEN
BY PRESTIGE HARBOUR

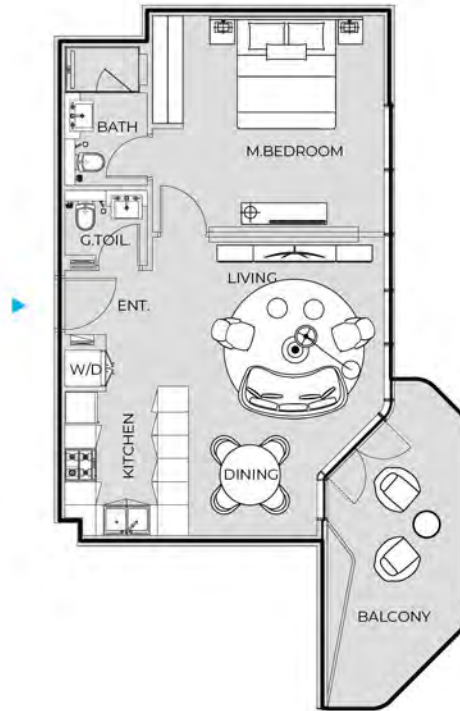
PRESTIGE ONE

UNIT 703

1 BEDROOM TYPE C

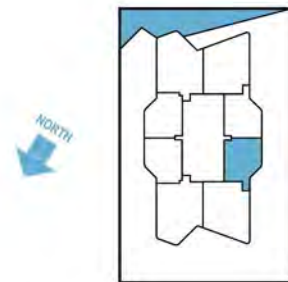
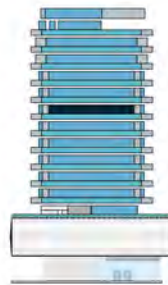
COASTAL
HAVEN

BY PRESTIGE HARBOUR



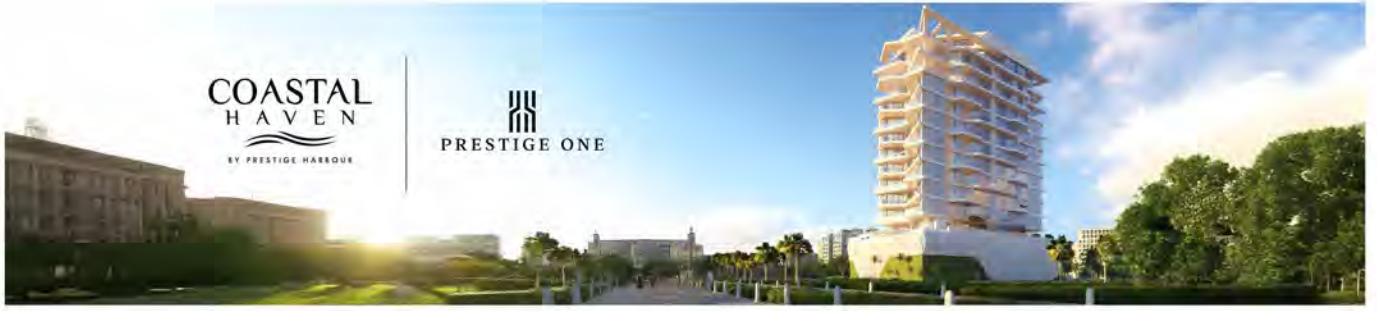
UNIT SIZE

UNIT AREA	673.39FT ²
BALCONY AREA	156.94FT ²
TOTAL AREA	830.33FT ²



PRESTIGE ONE

All drawings and dimensions are approximate. Drawings are not to scale and are subject to change without notice. The developer reserves the right to make revisions. The units are measured at typical floor in the building and columns may vary in size depending on the floor level. The furnishings and accessories shown are for representation only. The length and width of the Unit and balcony varies depending on which floor and which orientation the unit is located within the building to comply with the building authority regulations. Apartment unit sizes may vary. Actual unit sizes will be reflected on the Sales and Purchase Agreement.



**COASTAL
HAVEN**
BY PRESTIGE HARBOUR

PRESTIGE ONE

UNIT 704

2 BEDROOM TYPE B

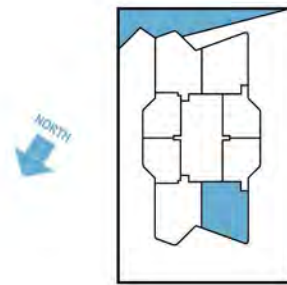
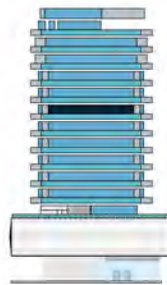
**COASTAL
HAVEN**

BY PRESTIGE HARBOUR



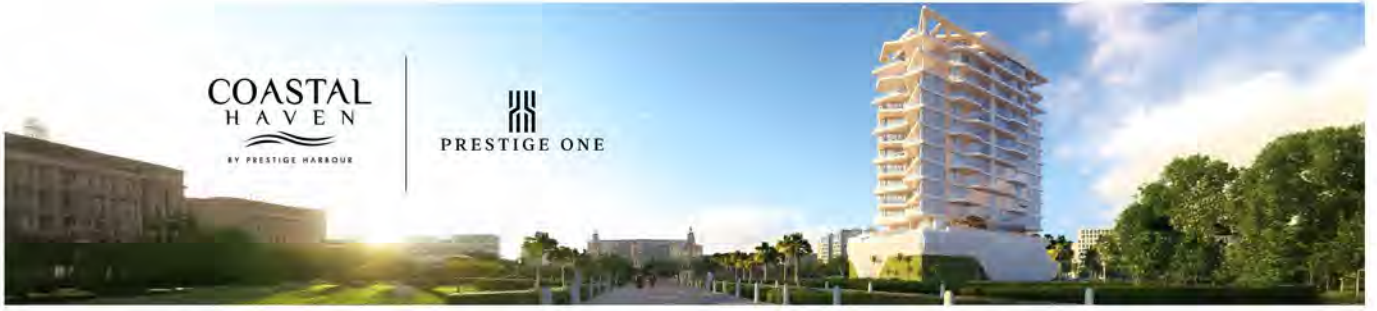
UNIT SIZE

UNIT AREA	1,071.65FT ²
BALCONY AREA	172.11FT ²
TOTAL AREA	1,243.77FT ²



PRESTIGE ONE

All drawings and dimensions are approximate. Drawings are not to scale and are subject to change without notice. The developer reserves the right to make revisions. The units are measured at typical floor in the building and columns may vary in size depending on the floor level. The furnishings and accessories shown are for representation only. The length and width of the Unit and balcony varies depending on which floor and which orientation the unit is located within the building to comply with the building authority regulations. Apartment unit sizes may vary. Actual unit sizes will be reflected on the Sales and Purchase Agreement.



**COASTAL
HAVEN**
BY PRESTIGE HARBOUR

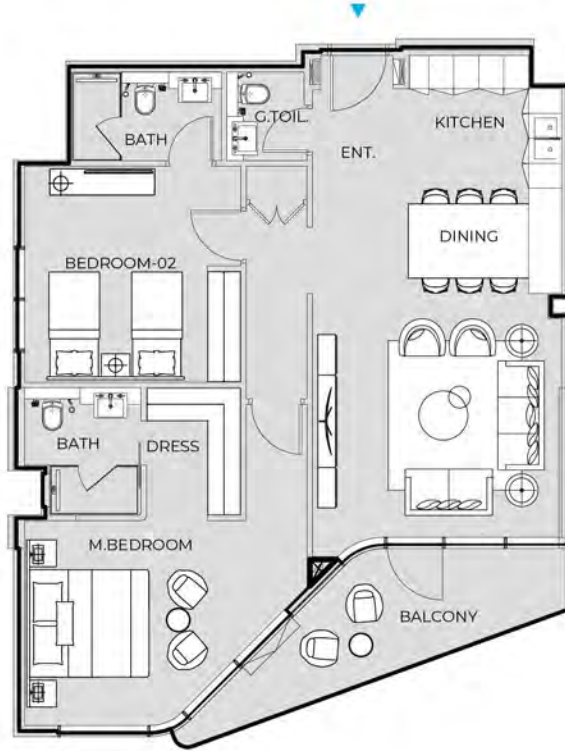
PRESTIGE ONE

UNIT 705

2 BEDROOM TYPE A

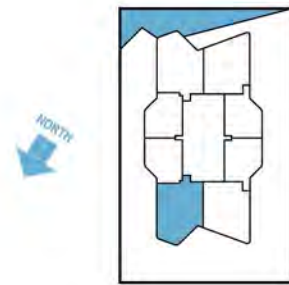
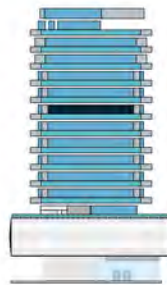
**COASTAL
HAVEN**

BY PRESTIGE HARBOUR



UNIT SIZE

UNIT AREA	1,071.65FT ²
BALCONY AREA	128.74FT ²
TOTAL AREA	1,200.39FT ²



PRESTIGE ONE

All drawings and dimensions are approximate. Drawings are not to scale and are subject to change without notice. The developer reserves the right to make revisions. The units are measured at typical floor in the building and columns may vary in size depending on the floor level. The furnishings and accessories shown are for representation only. The length and width of the Unit and balcony varies depending on which floor and which orientation the unit is located within the building to comply with the building authority regulations. Apartment unit sizes may vary. Actual unit sizes will be reflected on the Sales and Purchase Agreement.



**COASTAL
HAVEN**
BY PRESTIGE HARBOUR

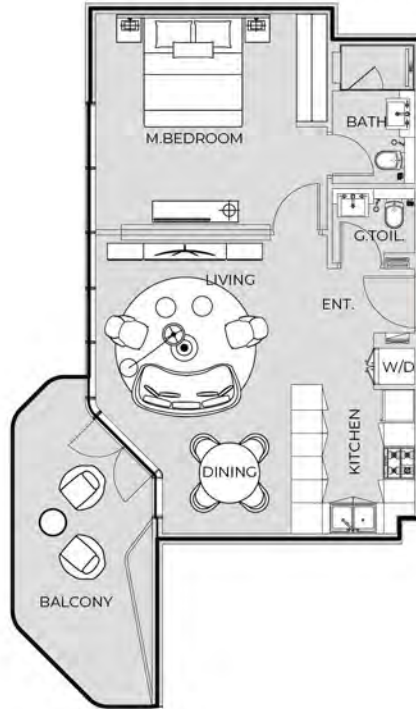
PRESTIGE ONE

UNIT 706

1 BEDROOM TYPE C

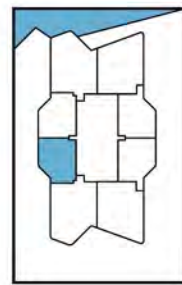
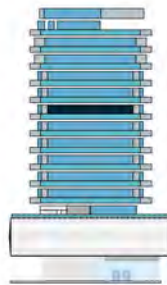
**COASTAL
HAVEN**

BY PRESTIGE HARBOUR



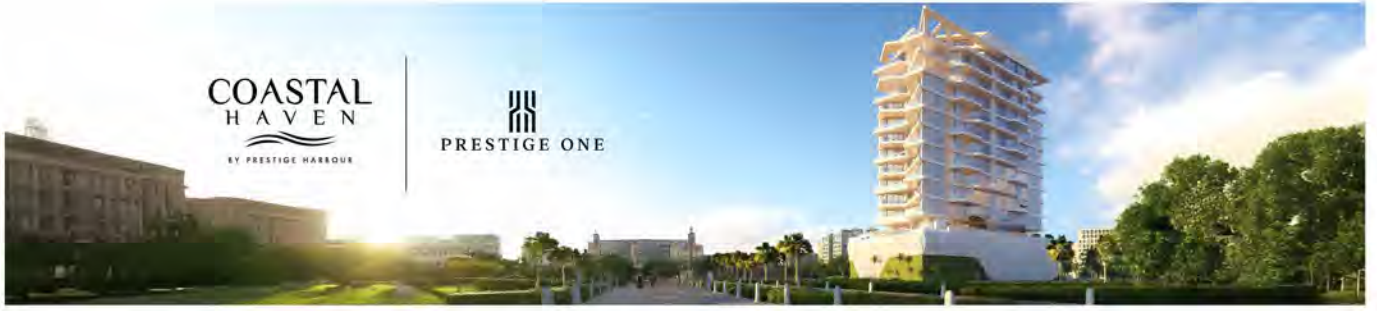
UNIT SIZE

UNIT AREA	671.78FT ²
BALCONY AREA	156.94FT ²
TOTAL AREA	828.71FT ²



PRESTIGE ONE

All drawings and dimensions are approximate. Drawings are not to scale and are subject to change without notice. The developer reserves the right to make revisions. The units are measured at typical floor in the building and columns may vary in size depending on the floor level. The furnishings and accessories shown are for representation only. The length and width of the Unit and balcony varies depending on which floor and which orientation the unit is located within the building to comply with the building authority regulations. Apartment unit sizes may vary. Actual unit sizes will be reflected on the Sales and Purchase Agreement.



COASTAL
HAVEN
BY PRESTIGE HARBOUR

PRESTIGE ONE

UNIT 707

1 BEDROOM TYPE C

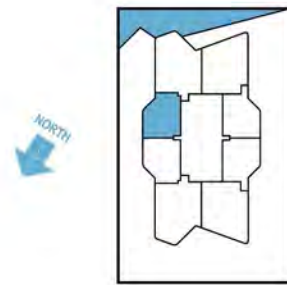
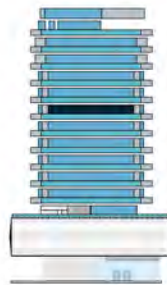
COASTAL
HAVEN

BY PRESTIGE HARBOUR



UNIT SIZE

UNIT AREA	673.39FT ²
BALCONY AREA	156.94FT ²
TOTAL AREA	830.33FT ²



PRESTIGE ONE

All drawings and dimensions are approximate. Drawings are not to scale and are subject to change without notice. The developer reserves the right to make revisions. The units are measured at typical floor in the building and columns may vary in size depending on the floor level. The furnishings and accessories shown are for representation only. The length and width of the Unit and balcony varies depending on which floor and which orientation the unit is located within the building to comply with the building authority regulations. Apartment unit sizes may vary. Actual unit sizes will be reflected on the Sales and Purchase Agreement.



**COASTAL
HAVEN**
BY PRESTIGE HARBOUR

PRESTIGE ONE

UNIT 708

2 BEDROOM TYPE A

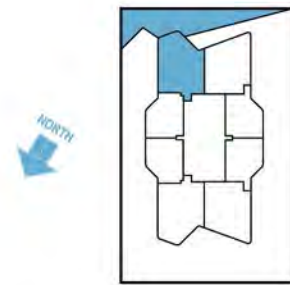
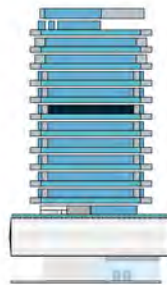
**COASTAL
HAVEN**

BY PRESTIGE HARBOUR



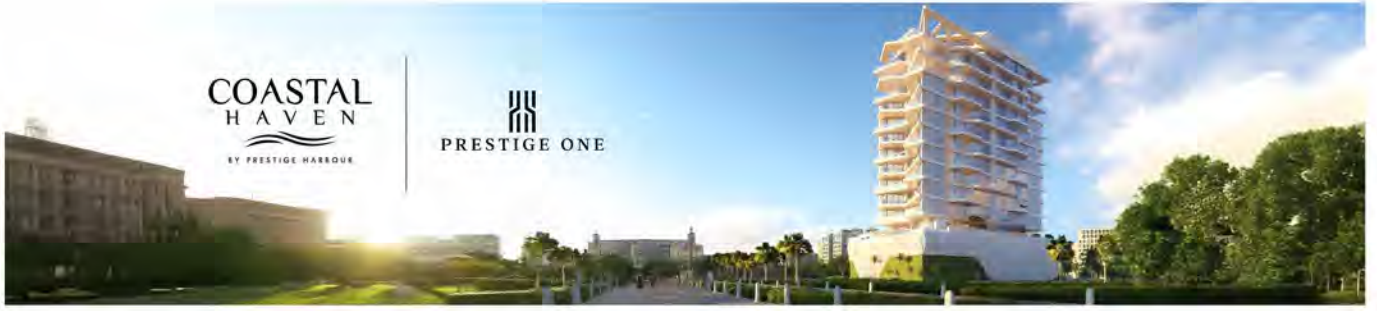
UNIT SIZE

UNIT AREA	1,071.65FT ²
BALCONY AREA	128.74FT ²
TOTAL AREA	1,200.39FT ²



PRESTIGE ONE

All drawings and dimensions are approximate. Drawings are not to scale and are subject to change without notice. The developer reserves the right to make revisions. The units are measured at typical floor in the building and columns may vary in size depending on the floor level. The furnishings and accessories shown are for representation only. The length and width of the Unit and balcony varies depending on which floor and which orientation the unit is located within the building to comply with the building authority regulations. Apartment unit sizes may vary. Actual unit sizes will be reflected on the Sales and Purchase Agreement.



**COASTAL
HAVEN**
BY PRESTIGE HARBOUR

PRESTIGE ONE

UNIT 801

2 BEDROOM TYPE A

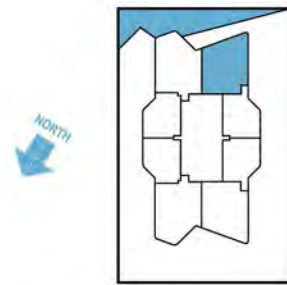
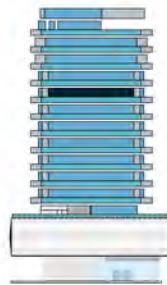
**COASTAL
HAVEN**

BY PRESTIGE HARBOUR



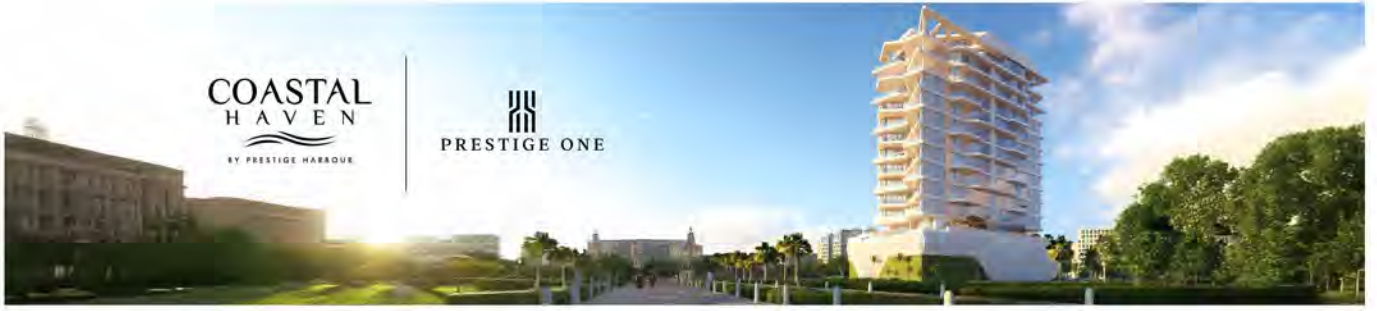
UNIT SIZE

UNIT AREA	1,071.44FT ²
BALCONY AREA	129.27FT ²
TOTAL AREA	1,200.71FT ²



PRESTIGE ONE

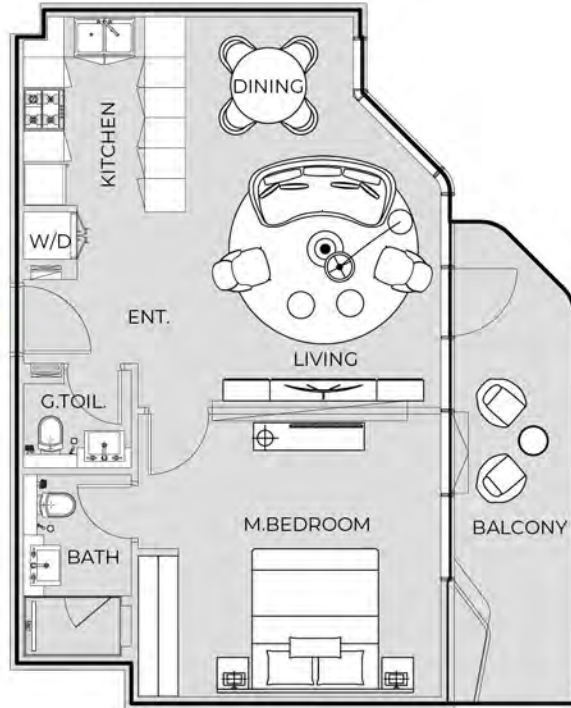
All drawings and dimensions are approximate. Drawings are not to scale and are subject to change without notice. The developer reserves the right to make revisions. The units are measured at typical floor in the building and columns may vary in size depending on the floor level. The furnishings and accessories shown are for representation only. The length and width of the Unit and balcony varies depending on which floor and which orientation the unit is located within the building to comply with the building authority regulations. Apartment unit sizes may vary. Actual unit sizes will be reflected on the Sales and Purchase Agreement.



UNIT 802

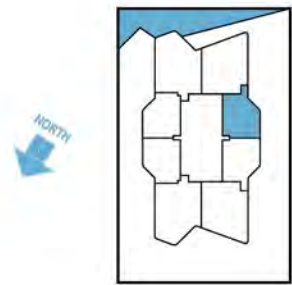
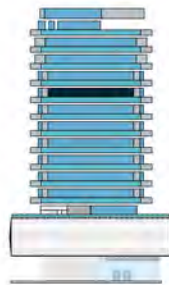
1 BEDROOM TYPE A

COASTAL HAVEN
BY PRESTIGE HARBOUR



UNIT SIZE

UNIT AREA	673.39FT ²
BALCONY AREA	136.27FT ²
TOTAL AREA	809.66FT ²





COASTAL
HAVEN
BY PRESTIGE HARBOUR

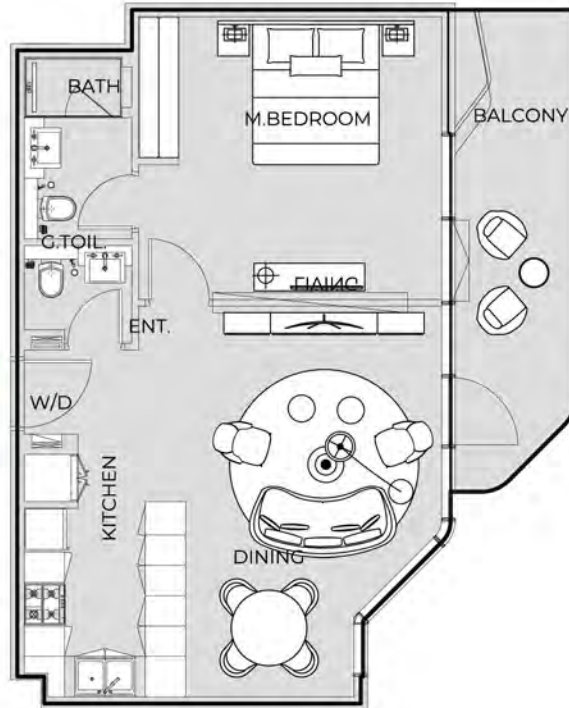
PRESTIGE ONE

UNIT 803

1 BEDROOM TYPE A

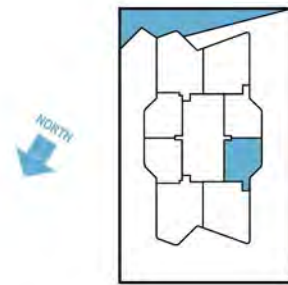
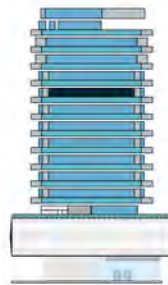
COASTAL
HAVEN

BY PRESTIGE HARBOUR



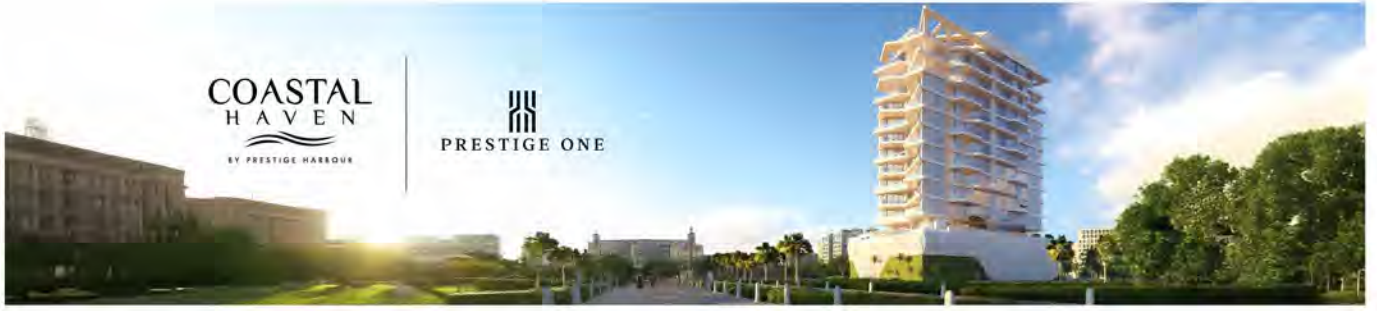
UNIT SIZE

UNIT AREA	673.39FT ²
BALCONY AREA	136.27FT ²
TOTAL AREA	809.66FT ²



PRESTIGE ONE

All drawings and dimensions are approximate. Drawings are not to scale and are subject to change without notice. The developer reserves the right to make revisions. The units are measured at typical floor in the building and columns may vary in size depending on the floor level. The furnishings and accessories shown are for representation only. The length and width of the Unit and balcony varies depending on which floor and which orientation the unit is located within the building to comply with the building authority regulations. Apartment unit sizes may vary. Actual unit sizes will be reflected on the Sales and Purchase Agreement.



COASTAL
HAVEN
BY PRESTIGE HARBOUR

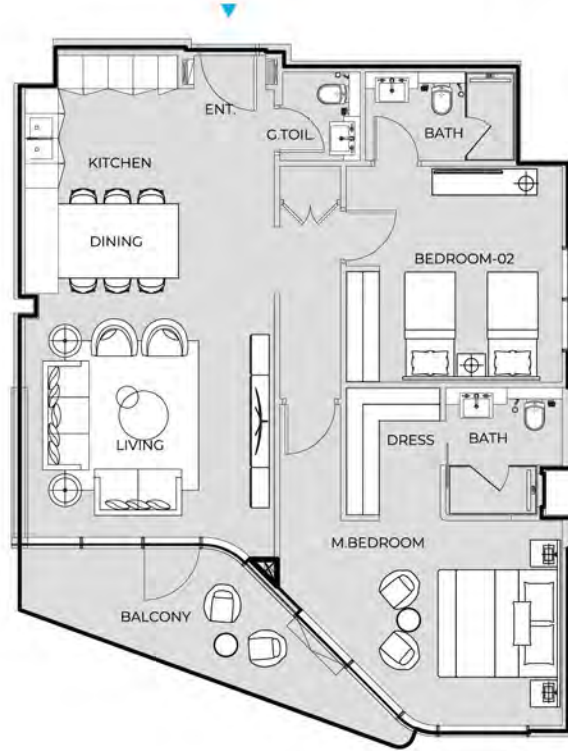
PRESTIGE ONE

UNIT 804

2 BEDROOM TYPE A

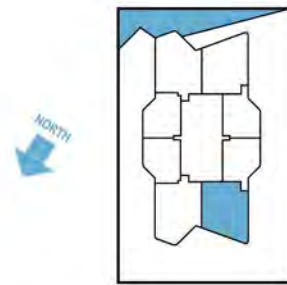
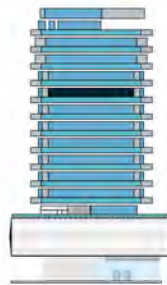
COASTAL
HAVEN

BY PRESTIGE HARBOUR



UNIT SIZE

UNIT AREA	1,071.44FT ²
BALCONY AREA	129.27FT ²
TOTAL AREA	1,200.71FT ²



PRESTIGE ONE

All drawings and dimensions are approximate. Drawings are not to scale and are subject to change without notice. The developer reserves the right to make revisions. The units are measured at typical floor in the building and columns may vary in size depending on the floor level. The furnishings and accessories shown are for representation only. The length and width of the Unit and balcony varies depending on which floor and which orientation the unit is located within the building to comply with the building authority regulations. Apartment unit sizes may vary. Actual unit sizes will be reflected on the Sales and Purchase Agreement.



**COASTAL
HAVEN**
BY PRESTIGE HARBOUR

PRESTIGE ONE

UNIT 805

2 BEDROOM TYPE B

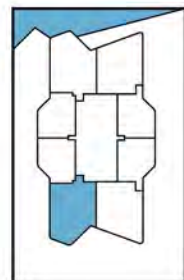
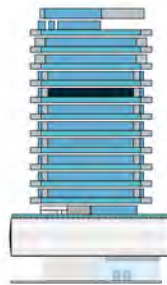
**COASTAL
HAVEN**

BY PRESTIGE HARBOUR



UNIT SIZE

UNIT AREA	1,071.44FT ²
BALCONY AREA	172.65FT ²
TOTAL AREA	1,244.09FT ²



PRESTIGE ONE

All drawings and dimensions are approximate. Drawings are not to scale and are subject to change without notice. The developer reserves the right to make revisions. The units are measured at typical floor in the building and columns may vary in size depending on the floor level. The furnishings and accessories shown are for representation only. The length and width of the Unit and balcony varies depending on which floor and which orientation the unit is located within the building to comply with the building authority regulations. Apartment unit sizes may vary. Actual unit sizes will be reflected on the Sales and Purchase Agreement.



COASTAL
HAVEN
BY PRESTIGE HARBOUR

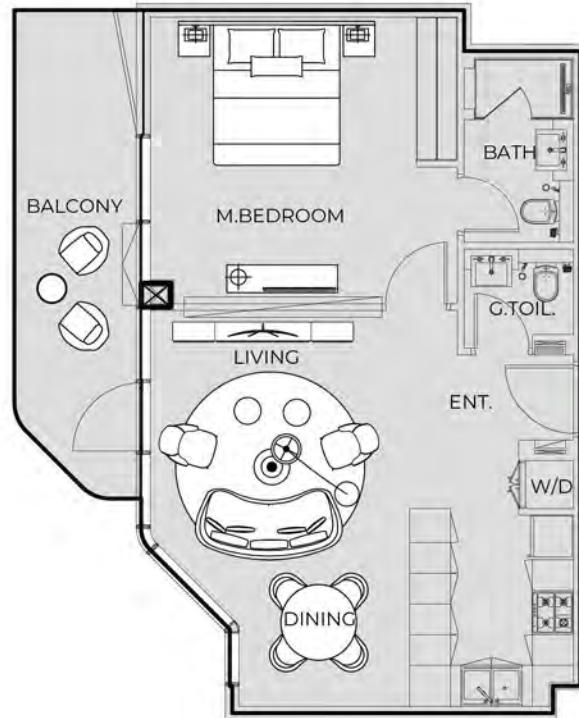
PRESTIGE ONE

UNIT 806

1 BEDROOM TYPE B

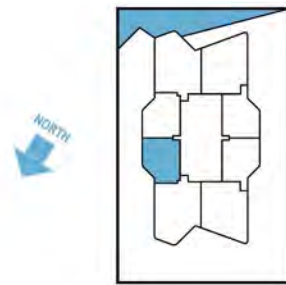
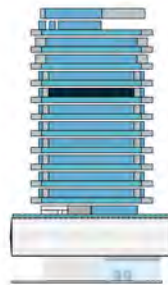
COASTAL
HAVEN

BY PRESTIGE HARBOUR



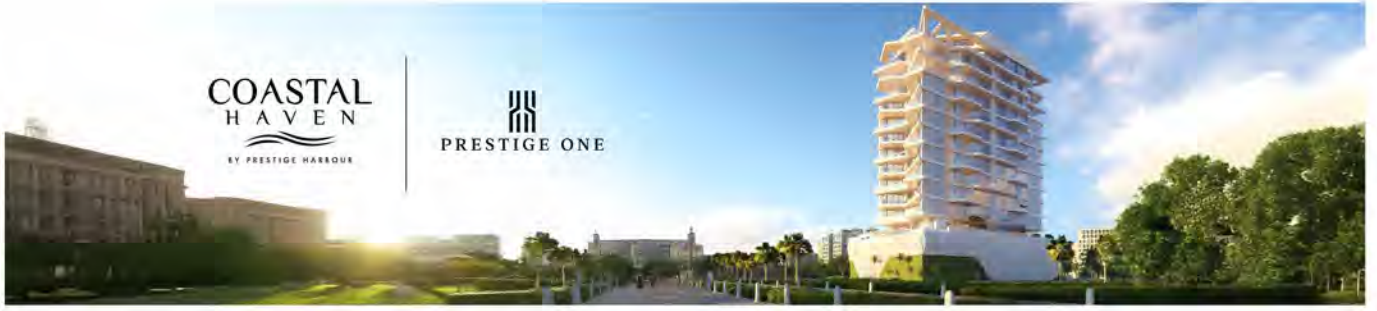
UNIT SIZE

UNIT AREA	671.78FT ²
BALCONY AREA	136.27FT ²
TOTAL AREA	808.05FT ²



PRESTIGE ONE

All drawings and dimensions are approximate. Drawings are not to scale and are subject to change without notice. The developer reserves the right to make revisions. The units are measured at typical floor in the building and columns may vary in size depending on the floor level. The furnishings and accessories shown are for representation only. The length and width of the Unit and balcony varies depending on which floor and which orientation the unit is located within the building to comply with the building authority regulations. Apartment unit sizes may vary. Actual unit sizes will be reflected on the Sales and Purchase Agreement.

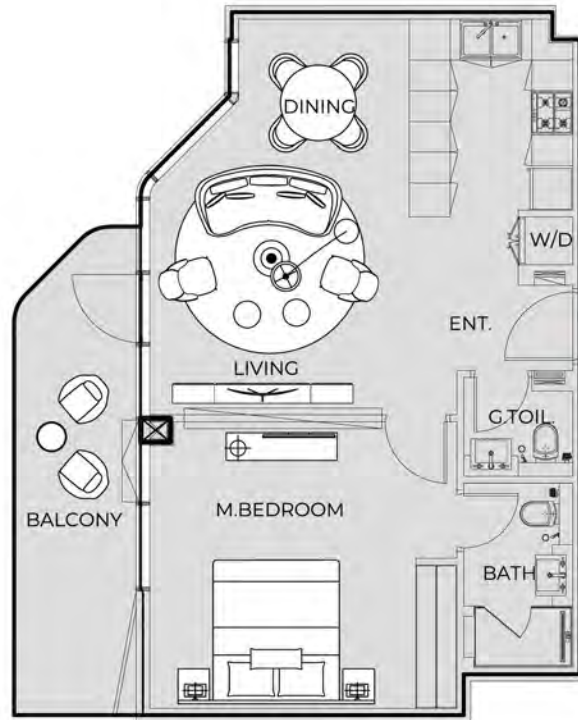


UNIT 807

1 BEDROOM TYPE B

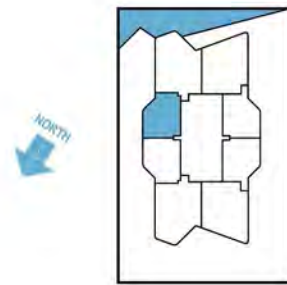
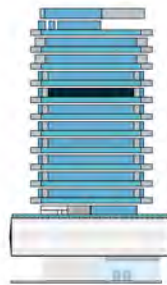
COASTAL HAVEN

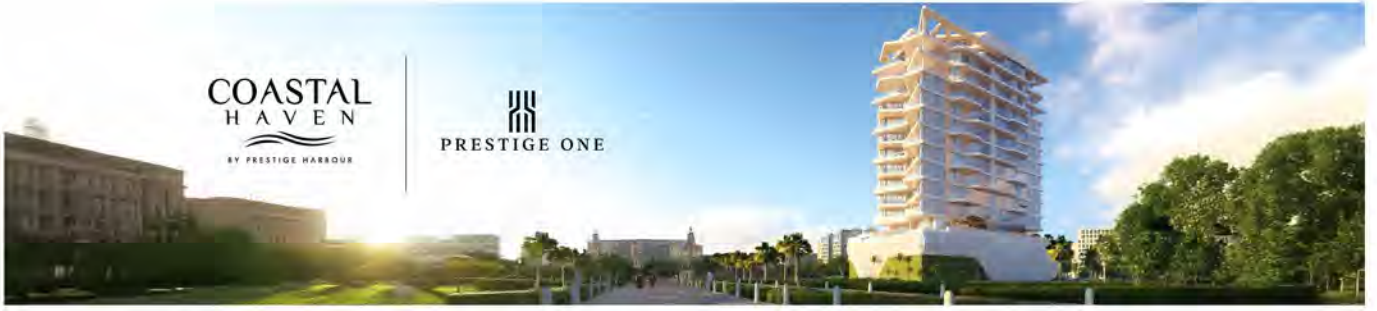
BY PRESTIGE HARBOUR



UNIT SIZE

UNIT AREA	673.39FT ²
BALCONY AREA	136.27FT ²
TOTAL AREA	809.66FT ²





COASTAL
HAVEN
BY PRESTIGE HARBOUR

PRESTIGE ONE

UNIT 808

2 BEDROOM TYPE B

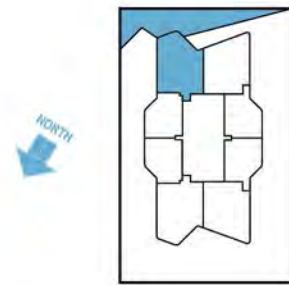
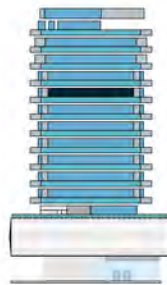
COASTAL
HAVEN

BY PRESTIGE HARBOUR



UNIT SIZE

UNIT AREA	1,071.44FT ²
BALCONY AREA	172.65FT ²
TOTAL AREA	1,244.09FT ²



PRESTIGE ONE

All drawings and dimensions are approximate. Drawings are not to scale and are subject to change without notice. The developer reserves the right to make revisions. The units are measured at typical floor in the building and columns may vary in size depending on the floor level. The furnishings and accessories shown are for representation only. The length and width of the Unit and balcony varies depending on which floor and which orientation the unit is located within the building to comply with the building authority regulations. Apartment unit sizes may vary. Actual unit sizes will be reflected on the Sales and Purchase Agreement.



**COASTAL
HAVEN**
BY PRESTIGE HARBOUR

PRESTIGE ONE

UNIT 901

2 BEDROOM TYPE B

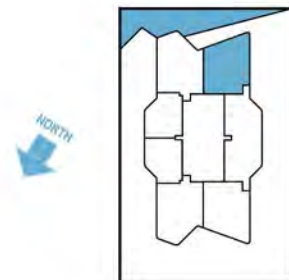
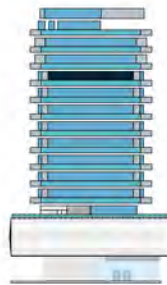
**COASTAL
HAVEN**

BY PRESTIGE HARBOUR



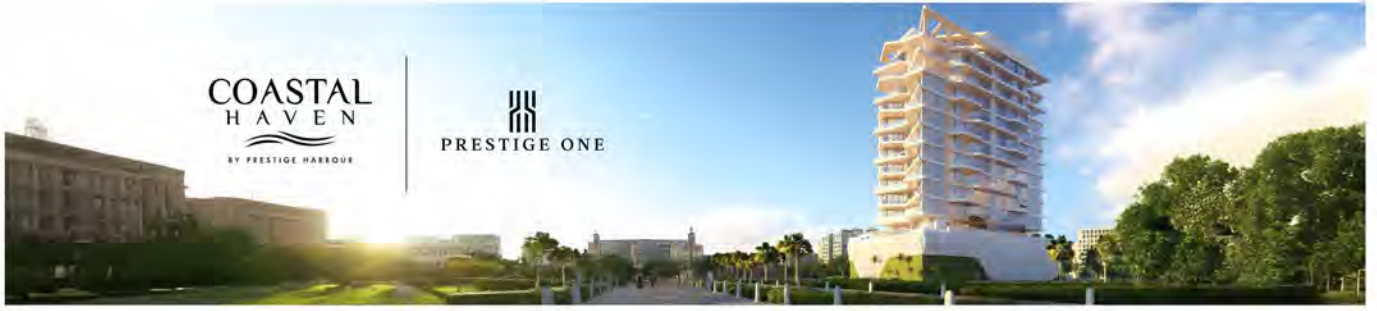
UNIT SIZE

UNIT AREA	1,071.55FT ²
BALCONY AREA	172.65FT ²
TOTAL AREA	1,244.20FT ²



PRESTIGE ONE

All drawings and dimensions are approximate. Drawings are not to scale and are subject to change without notice. The developer reserves the right to make revisions. The units are measured at typical floor in the building and columns may vary in size depending on the floor level. The furnishings and accessories shown are for representation only. The length and width of the Unit and balcony varies depending on which floor and which orientation the unit is located within the building to comply with the building authority regulations. Apartment unit sizes may vary. Actual unit sizes will be reflected on the Sales and Purchase Agreement.



**COASTAL
HAVEN**
BY PRESTIGE HARBOUR

PRESTIGE ONE

UNIT 902

1 BEDROOM TYPE C

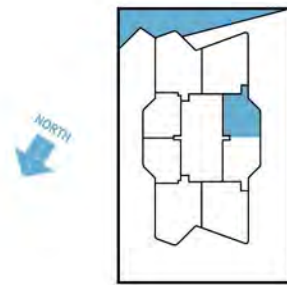
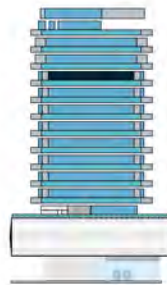
**COASTAL
HAVEN**

BY PRESTIGE HARBOUR



UNIT SIZE

UNIT AREA	673.39FT ²
BALCONY AREA	156.94FT ²
TOTAL AREA	830.33FT ²



PRESTIGE ONE

All drawings and dimensions are approximate. Drawings are not to scale and are subject to change without notice. The developer reserves the right to make revisions. The units are measured at typical floor in the building and columns may vary in size depending on the floor level. The furnishings and accessories shown are for representation only. The length and width of the Unit and balcony varies depending on which floor and which orientation the unit is located within the building to comply with the building authority regulations. Apartment unit sizes may vary. Actual unit sizes will be reflected on the Sales and Purchase Agreement.



**COASTAL
HAVEN**
BY PRESTIGE HARBOUR

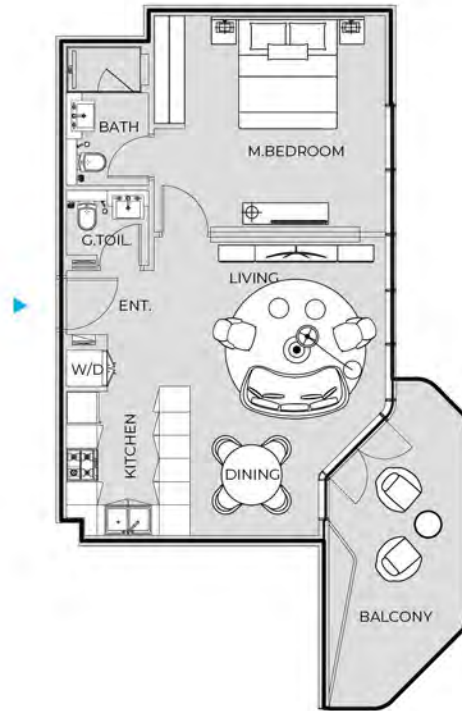
PRESTIGE ONE

UNIT 903

1 BEDROOM TYPE C

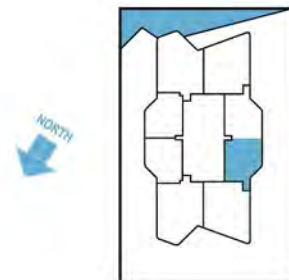
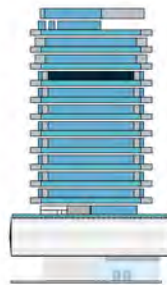
**COASTAL
HAVEN**

BY PRESTIGE HARBOUR



UNIT SIZE

UNIT AREA	673.39FT ²
BALCONY AREA	156.94FT ²
TOTAL AREA	830.33FT ²



PRESTIGE ONE

All drawings and dimensions are approximate. Drawings are not to scale and are subject to change without notice. The developer reserves the right to make revisions. The units are measured at typical floor in the building and columns may vary in size depending on the floor level. The furnishings and accessories shown are for representation only. The length and width of the Unit and balcony varies depending on which floor and which orientation the unit is located within the building to comply with the building authority regulations. Apartment unit sizes may vary. Actual unit sizes will be reflected on the Sales and Purchase Agreement.



UNIT 904

2 BEDROOM TYPE B

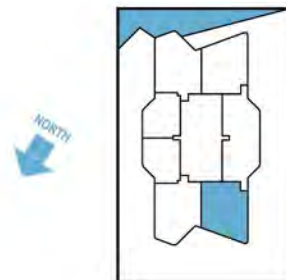
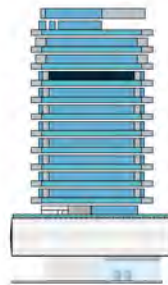
COASTAL HAVEN

BY PRESTIGE HARBOUR



UNIT SIZE

UNIT AREA	1,071.44FT ²
BALCONY AREA	172.65FT ²
TOTAL AREA	1,244.09FT ²





COASTAL
HAVEN
BY PRESTIGE HARBOUR

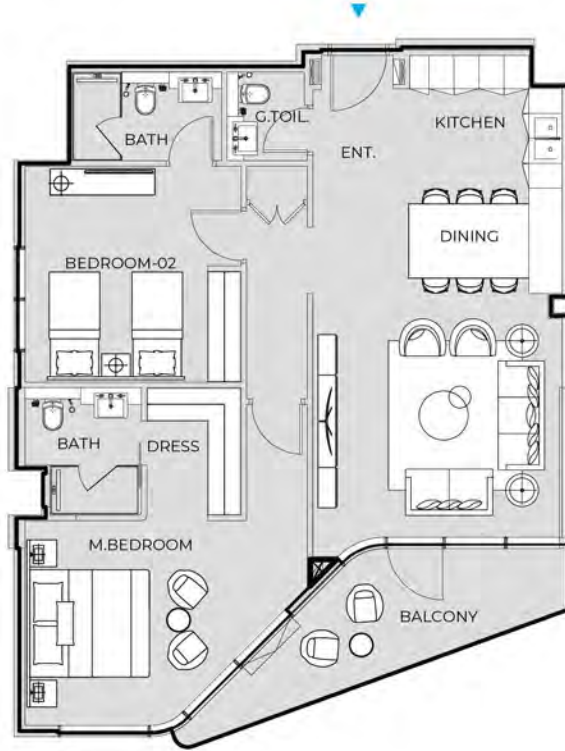
PRESTIGE ONE

UNIT 905

2 BEDROOM TYPE A

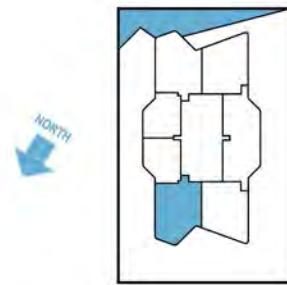
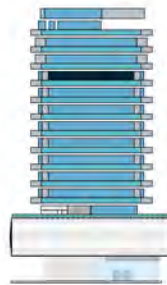
COASTAL
HAVEN

BY PRESTIGE HARBOUR



UNIT SIZE

UNIT AREA	1,071.65FT ²
BALCONY AREA	128.84FT ²
TOTAL AREA	1,200.50FT ²



PRESTIGE ONE

All drawings and dimensions are approximate. Drawings are not to scale and are subject to change without notice. The developer reserves the right to make revisions. The units are measured at typical floor in the building and columns may vary in size depending on the floor level. The furnishings and accessories shown are for representation only. The length and width of the Unit and balcony varies depending on which floor and which orientation the unit is located within the building to comply with the building authority regulations. Apartment unit sizes may vary. Actual unit sizes will be reflected on the Sales and Purchase Agreement.



COASTAL
HAVEN
BY PRESTIGE HARBOUR

PRESTIGE ONE

UNIT 906

3 BEDROOM TYPE A

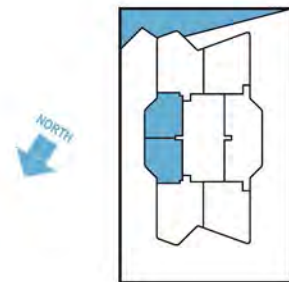
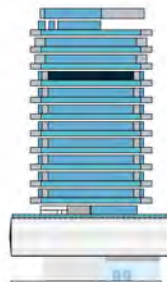
COASTAL
HAVEN

BY PRESTIGE HARBOUR



UNIT SIZE

UNIT AREA	1,351.62FT ²
BALCONY AREA	313.98FT ²
TOTAL AREA	1,665.61FT ²



PRESTIGE ONE

All drawings and dimensions are approximate. Drawings are not to scale and are subject to change without notice. The developer reserves the right to make revisions. The units are measured at typical floor in the building and columns may vary in size depending on the floor level. The furnishings and accessories shown are for representation only. The length and width of the Unit and balcony varies depending on which floor and which orientation the unit is located within the building to comply with the building authority regulations. Apartment unit sizes may vary. Actual unit sizes will be reflected on the Sales and Purchase Agreement.



COASTAL
HAVEN
BY PRESTIGE HARBOUR

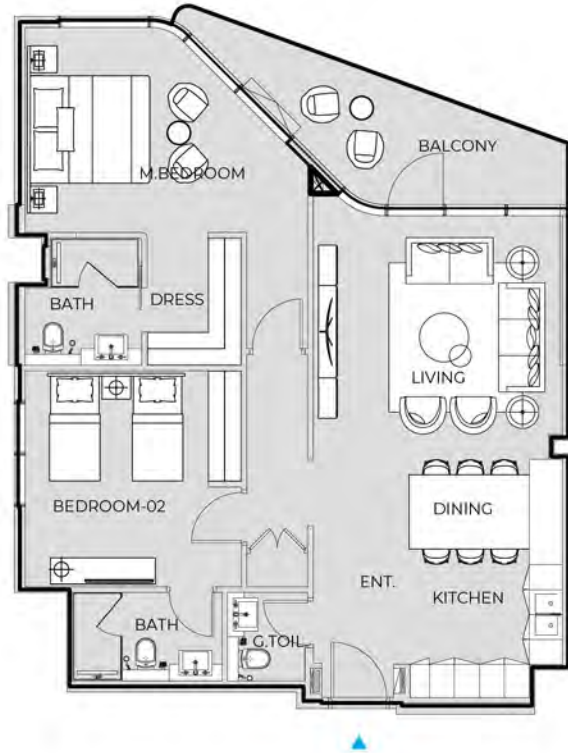
PRESTIGE ONE

UNIT 907

2 BEDROOM TYPE A

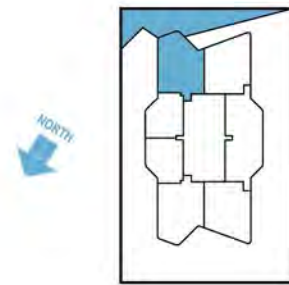
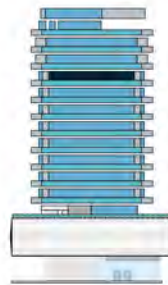
COASTAL
HAVEN

BY PRESTIGE HARBOUR



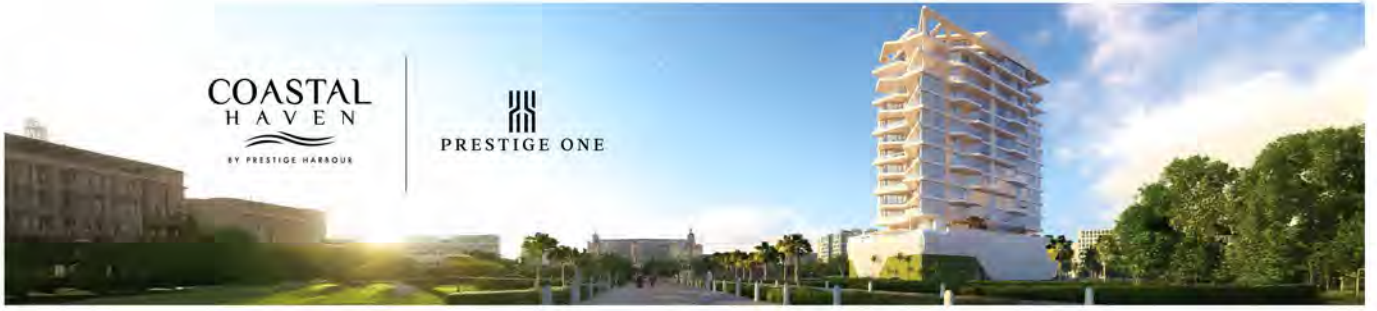
UNIT SIZE

UNIT AREA	1,071.55FT ²
BALCONY AREA	129.27FT ²
TOTAL AREA	1,200.82FT ²



PRESTIGE ONE

All drawings and dimensions are approximate. Drawings are not to scale and are subject to change without notice. The developer reserves the right to make revisions. The units are measured at typical floor in the building and columns may vary in size depending on the floor level. The furnishings and accessories shown are for representation only. The length and width of the Unit and balcony varies depending on which floor and which orientation the unit is located within the building to comply with the building authority regulations. Apartment unit sizes may vary. Actual unit sizes will be reflected on the Sales and Purchase Agreement.



**COASTAL
HAVEN**
BY PRESTIGE HARBOUR

PRESTIGE ONE

UNIT 1001

3 BEDROOM TYPE B

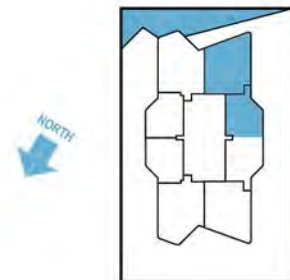
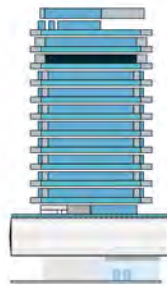
**COASTAL
HAVEN**

BY PRESTIGE HARBOUR



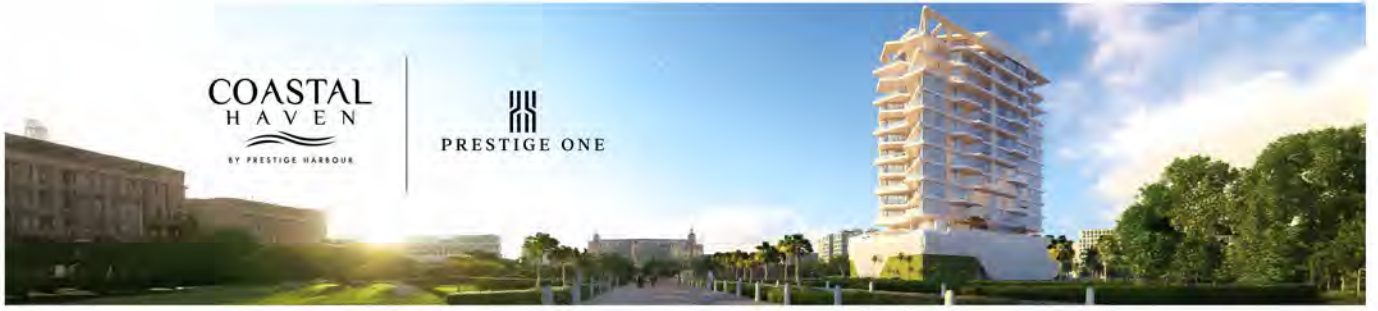
UNIT SIZE

UNIT AREA	1,626.75FT ²
BALCONY AREA	186.24FT ²
TOTAL AREA	2,004.67FT ²



PRESTIGE ONE

All drawings and dimensions are approximate. Drawings are not to scale and are subject to change without notice. The developer reserves the right to make revisions. The units are measured at typical floor in the building and columns may vary in size depending on the floor level. The furnishings and accessories shown are for representation only. The length and width of the Unit and balcony varies depending on which floor and which orientation the unit is located within the building to comply with the building authority regulations. Apartment unit sizes may vary. Actual unit sizes will be reflected on the Sales and Purchase Agreement.



UNIT 1002

3 BEDROOM TYPE B

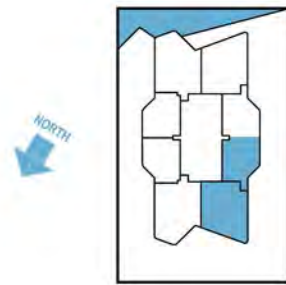
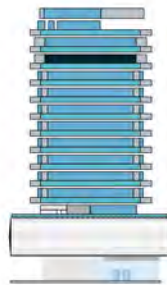
COASTAL HAVEN

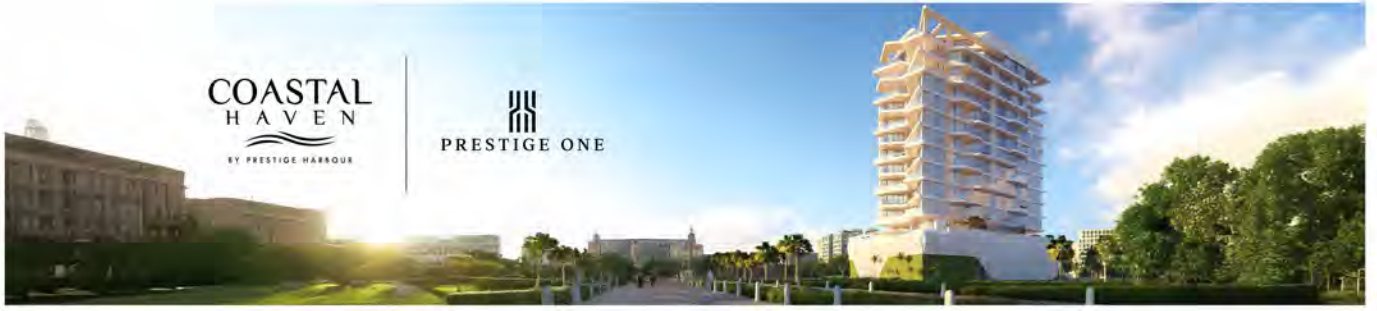
BY PRESTIGE HARBOUR



UNIT SIZE

UNIT AREA	1,627.61FT ²
BALCONY AREA	186.31FT ²
TOTAL AREA	2,005.42FT ²





COASTAL
HAVEN
BY PRESTIGE HARBOUR

PRESTIGE ONE

UNIT 1003

3 BEDROOM TYPE C

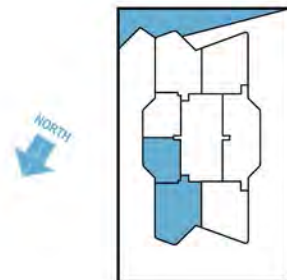
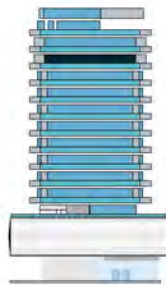
COASTAL
HAVEN

BY PRESTIGE HARBOUR



UNIT SIZE

UNIT AREA	1,627.50FT ²
BALCONY AREA	408.60FT ²
TOTAL AREA	2,036.10FT ²



PRESTIGE ONE

All drawings and dimensions are approximate. Drawings are not to scale and are subject to change without notice. The developer reserves the right to make revisions. The units are measured at typical floor in the building and columns may vary in size depending on the floor level. The furnishings and accessories shown are for representation only. The length and width of the Unit and balcony varies depending on which floor and which orientation the unit is located within the building to comply with the building authority regulations. Apartment unit sizes may vary. Actual unit sizes will be reflected on the Sales and Purchase Agreement.



COASTAL
HAVEN
BY PRESTIGE HARBOUR

PRESTIGE ONE

UNIT 1004

3 BEDROOM TYPE C

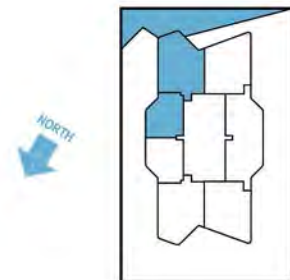
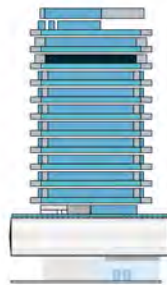
COASTAL
HAVEN

BY PRESTIGE HARBOUR



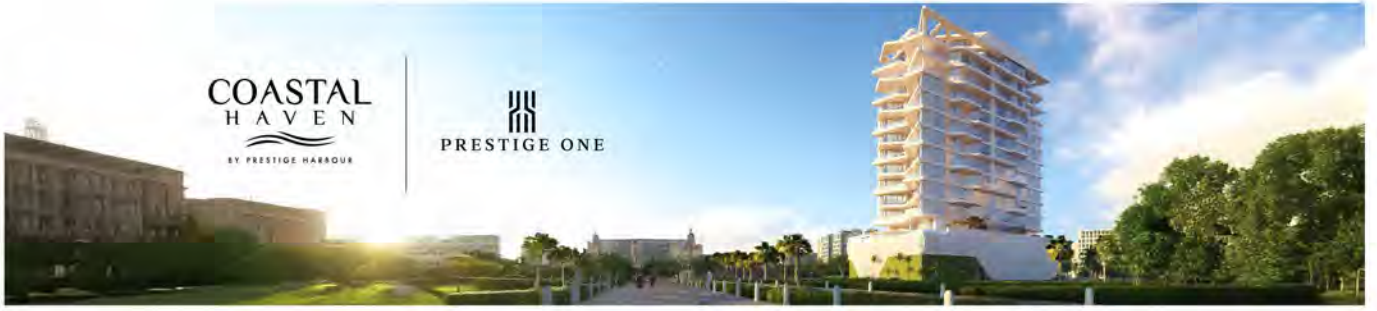
UNIT SIZE

UNIT AREA	1,626.75FT ²
BALCONY AREA	408.60FT ²
TOTAL AREA	2,035.35FT ²



PRESTIGE ONE

All drawings and dimensions are approximate. Drawings are not to scale and are subject to change without notice. The developer reserves the right to make revisions. The units are measured at typical floor in the building and columns may vary in size depending on the floor level. The furnishings and accessories shown are for representation only. The length and width of the Unit and balcony varies depending on which floor and which orientation the unit is located within the building to comply with the building authority regulations. Apartment unit sizes may vary. Actual unit sizes will be reflected on the Sales and Purchase Agreement.



**COASTAL
HAVEN**
BY PRESTIGE HARBOUR

PRESTIGE ONE

UNIT 1101

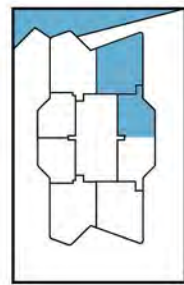
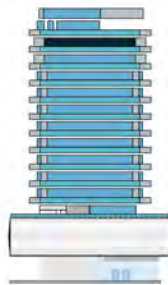
3 BEDROOM TYPE D

**COASTAL
HAVEN**
BY PRESTIGE HARBOUR



UNIT SIZE

UNIT AREA	1,626.75FT ²
BALCONY AREA	417.85FT ²
TOTAL AREA	2,044.60FT ²



PRESTIGE ONE

All drawings and dimensions are approximate. Drawings are not to scale and are subject to change without notice. The developer reserves the right to make revisions. The units are measured at typical floor in the building and columns may vary in size depending on the floor level. The furnishings and accessories shown are for representation only. The length and width of the Unit and balcony varies depending on which floor and which orientation the unit is located within the building to comply with the building authority regulations. Apartment unit sizes may vary. Actual unit sizes will be reflected on the Sales and Purchase Agreement.



**COASTAL
HAVEN**
BY PRESTIGE HARBOUR

PRESTIGE ONE

UNIT 1102

3 BEDROOM TYPE D

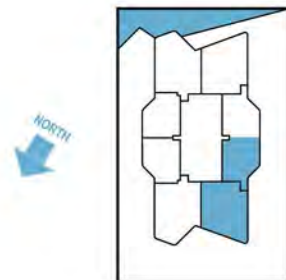
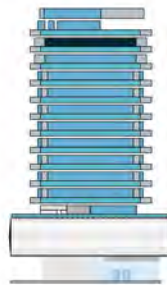
**COASTAL
HAVEN**

BY PRESTIGE HARBOUR



UNIT SIZE

UNIT AREA	1,627.61FT ²
BALCONY AREA	417.75FT ²
TOTAL AREA	2,045.36FT ²



PRESTIGE ONE

All drawings and dimensions are approximate. Drawings are not to scale and are subject to change without notice. The developer reserves the right to make revisions. The units are measured at typical floor in the building and columns may vary in size depending on the floor level. The furnishings and accessories shown are for representation only. The length and width of the Unit and balcony varies depending on which floor and which orientation the unit is located within the building to comply with the building authority regulations. Apartment unit sizes may vary. Actual unit sizes will be reflected on the Sales and Purchase Agreement.



COASTAL
HAVEN
BY PRESTIGE HARBOUR

PRESTIGE ONE

UNIT 1103

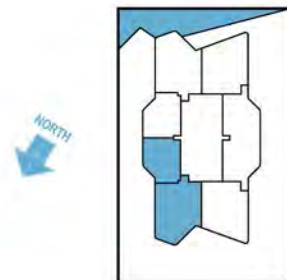
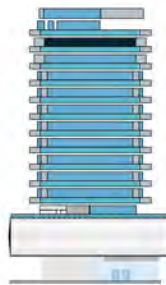
3 BEDROOM TYPE E

COASTAL
HAVEN
BY PRESTIGE HARBOUR



UNIT SIZE

UNIT AREA	1,627.61FT ²
BALCONY AREA	298.91FT ²
TOTAL AREA	1,926.52FT ²



PRESTIGE ONE

All drawings and dimensions are approximate. Drawings are not to scale and are subject to change without notice. The developer reserves the right to make revisions. The units are measured at typical floor in the building and columns may vary in size depending on the floor level. The furnishings and accessories shown are for representation only. The length and width of the Unit and balcony varies depending on which floor and which orientation the unit is located within the building to comply with the building authority regulations. Apartment unit sizes may vary. Actual unit sizes will be reflected on the Sales and Purchase Agreement.



UNIT 1104

3 BEDROOM TYPE E

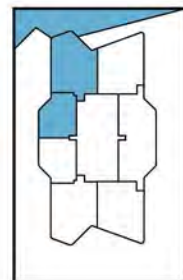
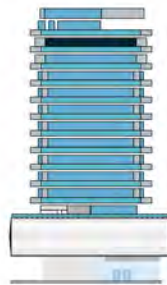
COASTAL HAVEN

BY PRESTIGE HARBOUR



UNIT SIZE

UNIT AREA	1,626.75FT ²
BALCONY AREA	299.02FT ²
TOTAL AREA	1,925.77FT ²





**COASTAL
HAVEN**
BY PRESTIGE HARBOUR

PRESTIGE ONE

UNIT 1201

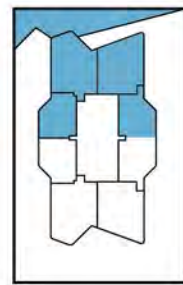
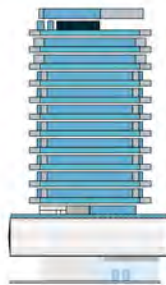
PENTHOUSE

**COASTAL
HAVEN**
BY PRESTIGE HARBOUR



UNIT SIZE

UNIT AREA	1,804.46FT ²
BALCONY AREA	2,612.29FT ²
TOTAL AREA	4,416.76FT ²



PRESTIGE ONE

All drawings and dimensions are approximate. Drawings are not to scale and are subject to change without notice. The developer reserves the right to make revisions. The units are measured at typical floor in the building and columns may vary in size depending on the floor level. The furnishings and accessories shown are for representation only. The length and width of the Unit and balcony varies depending on which floor and which orientation the unit is located within the building to comply with the building authority regulations. Apartment unit sizes may vary. Actual unit sizes will be reflected on the Sales and Purchase Agreement.



**COASTAL
HAVEN**
BY PRESTIGE HARBOUR

PRESTIGE ONE

UNIT 1202

PENTHOUSE

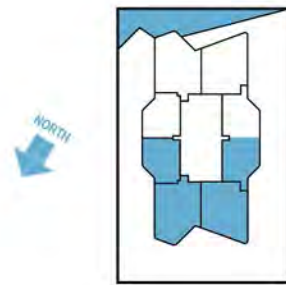
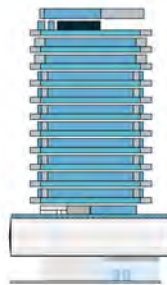
**COASTAL
HAVEN**

BY PRESTIGE HARBOUR



UNIT SIZE

UNIT AREA	1,805.32FT ²
BALCONY AREA	2,614.34FT ²
TOTAL AREA	4,419.66FT ²



PRESTIGE ONE

All drawings and dimensions are approximate. Drawings are not to scale and are subject to change without notice. The developer reserves the right to make revisions. The units are measured at typical floor in the building and columns may vary in size depending on the floor level. The furnishings and accessories shown are for representation only. The length and width of the Unit and balcony varies depending on which floor and which orientation the unit is located within the building to comply with the building authority regulations. Apartment unit sizes may vary. Actual unit sizes will be reflected on the Sales and Purchase Agreement.