

07

مخططات الطوابق

FLOOR PLANS

STUDIO / TYPE 01

Second Floor	201-210
Sixth Floor	601,606,607,612
Tenth Floor	1001,1006,1007,1012
Fourteenth Floor	1401,1406,1407,1412
Eighteenth Floor	1801,1806,1807,1812
Twenty-Second Floor	2201,2206,2207,2212

INTERNAL LIVING AREA

314.84ft²

OUTDOOR LIVING AREA

75.56ft²

TOTAL LIVING AREA

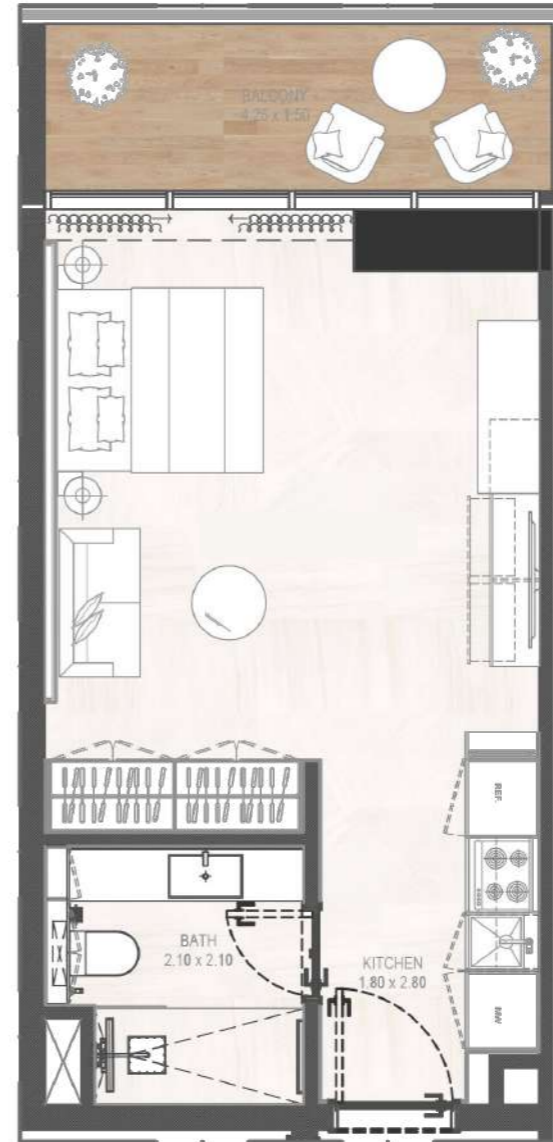
390.41ft²



Second Floor



Sixth Floor Tenth Floor Fourteenth Floor Eighteenth Floor
Twenty-Second Floor



Disclaimer: 1. All room dimensions are measured to structural elements and exclude wall finishes and construction tolerances. 2. All dimensions have been provided by our consultant architects. 3. All materials, dimensions and drawings are approximate. Information is subject to change without notice. 4. Actual suite area may vary from the stated area. Drawings not to scale. The developer reserves the right to make revisions. 5. Calculation of suite area is measured as the area bounded by the centre line of demising or partition walls separating one unit from another unit, the exterior face of all exterior walls, and the exterior face of the corridor wall enclosing the adjoining unit. 6. Calculation of balcony area is measured as the area bounded by the centre line of demising or partition walls separating one unit from another unit, the outmost face of the enclosing guard and the external face of the adjoining balcony. 7. The units are measured at typical floor in the building. Columns may vary in size depending on the floor level. 8. For each unit type, unit sizes and details might be slightly different. Please refer to the sales and purchase agreement for the actual size of each specific unit.





STUDIO / TYPE 02

Fourth Floor	403,404,409,410
Eighth Floor	803,804,809,810
Twelfth Floor	1203,1204,1209,1210
Sixteenth Floor	1603,1604,1609,1610
Twentieth Floor	2003,2004,2009,2010
Twenty-Fourth Floor	2403,2404,2409,2410

INTERNAL LIVING AREA

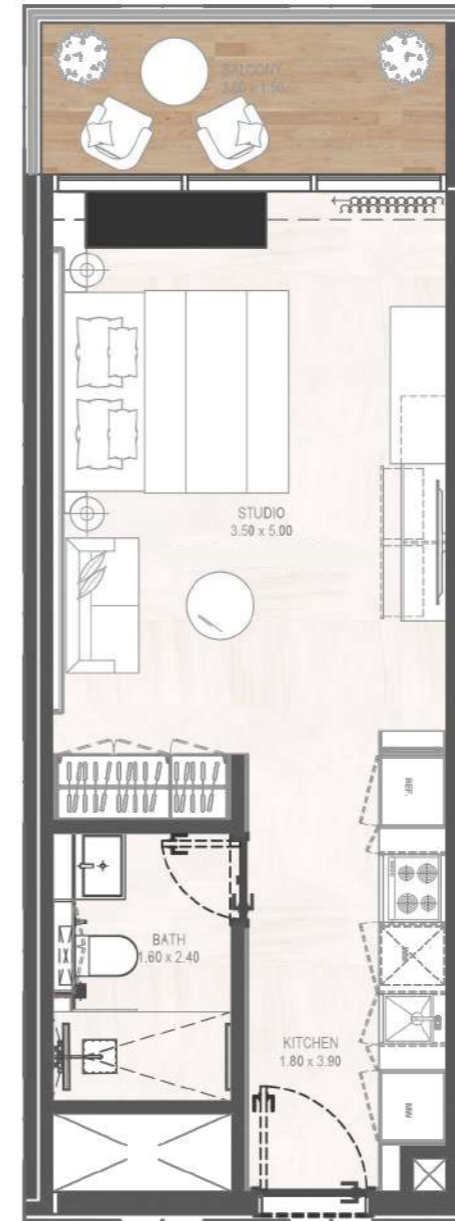
336.37ft²

OUTDOOR LIVING AREA

72.01ft²

TOTAL LIVING AREA

408.38ft²



Disclaimer: 1. All room dimensions are measured to structural elements and exclude wall finishes and construction tolerances. 2. All dimensions have been provided by our consultant architects. 3. All materials, dimensions and drawings are approximate. Information is subject to change without notice. 4. Actual suite area may vary from the stated area. Drawings not to scale. The developer reserves the right to make revisions. 5. Calculation of suite area is measured as the area bounded by the centre line of demising or partition walls separating one unit from another unit, the exterior face of all exterior walls, and the exterior face of the corridor wall enclosing the adjoining unit. 6. Calculation of balcony area is measured as the area bounded by the centre line of demising or partition walls separating one unit from another unit, the outmost face of the enclosing guard and the external face of the adjoining balcony. 7. The units are measured at typical floor in the building. Columns may vary in size depending on the floor level. 8. For each unit type, unit sizes and details might be slightly different. Please refer to the sales and purchase agreement for the actual size of each specific unit.





1BHK / TYPE 01

Second Floor	205,206
--------------	---------

INTERNAL LIVING AREA

794.81ft²

OUTDOOR LIVING AREA

295.15ft²

TOTAL LIVING AREA

1089.95ft²



Disclaimer: 1. All room dimensions are measured to structural elements and exclude wall finishes and construction tolerances. 2. All dimensions have been provided by our consultant architects. 3. All materials, dimensions and drawings are approximate. Information is subject to change without notice. 4. Actual suite area may vary from the stated area. Drawings not to scale. The developer reserves the right to make revisions. 5. Calculation of suite area is measured as the area bounded by the centre line of demising or partition walls separating one unit from another unit, the exterior face of all exterior walls, and the exterior face of the corridor wall enclosing the adjoining unit. 6. Calculation of balcony area is measured as the area bounded by the centre line of demising or partition walls separating one unit from another unit, the outmost face of the enclosing guard and the external face of the adjoining balcony. 7. The units are measured at typical floor in the building. Columns may vary in size depending on the floor level. 8. For each unit type, unit sizes and details might be slightly different. Please refer to the sales and purchase agreement for the actual size of each specific unit.





IBHK / TYPE 02

Second Floor	203,204,207,208
Fifth Floor	502,503,506,507
Sixth Floor	603,604,609,610
Ninth Floor	902,903,906,907
Tenth Floor	1003,1004,1009,1010
Thirteenth Floor	1302,1303,1306,1307
Fourteenth Floor	1403,1404,1409,1410
Seventeenth Floor	1702,1703,1706,1707
Eighteenth Floor	1803,1804,1809,1810
Twenty-first Floor	2102,2103,2106,2107
Twenty-Second Floor	2203,2204,2209,2210

INTERNAL LIVING AREA

623.02ft²

OUTDOOR LIVING AREA

122.17ft²

TOTAL LIVING AREA

745.19ft²



Disclaimer: 1. All room dimensions are measured to structural elements and exclude wall finishes and construction tolerances. 2. All dimensions have been provided by our consultant architects. 3. All materials, dimensions and drawings are approximate. Information is subject to change without notice. 4. Actual suite area may vary from the stated area. Drawings not to scale. The developer reserves the right to make revisions. 5. Calculation of suite area is measured as the area bounded by the centre line of demising or partition walls separating one unit from another unit, the exterior face of all exterior walls, and the exterior face of the corridor wall enclosing the adjoining unit. 6. Calculation of balcony area is measured as the area bounded by the centre line of demising or partition walls separating one unit from another unit, the outmost face of the enclosing guard and the external face of the adjoining balcony. 7. The units are measured at typical floor in the building. Columns may vary in size depending on the floor level. 8. For each unit type, unit sizes and details might be slightly different. Please refer to the sales and purchase agreement for the actual size of each specific unit.



