



## FLOORS & UNIT PLANS

TYPICAL LEVEL 02 - 17



- Studio + Pool
  - 1 Bedroom + Pool
  - 1 Bedroom + Laundry + Pool
  - 2 Bedroom + Pool
  - 2 Bedroom + Store + Laundry + Pool
- 
- Duct
  - Circulation
  - Services

LEVEL - 01

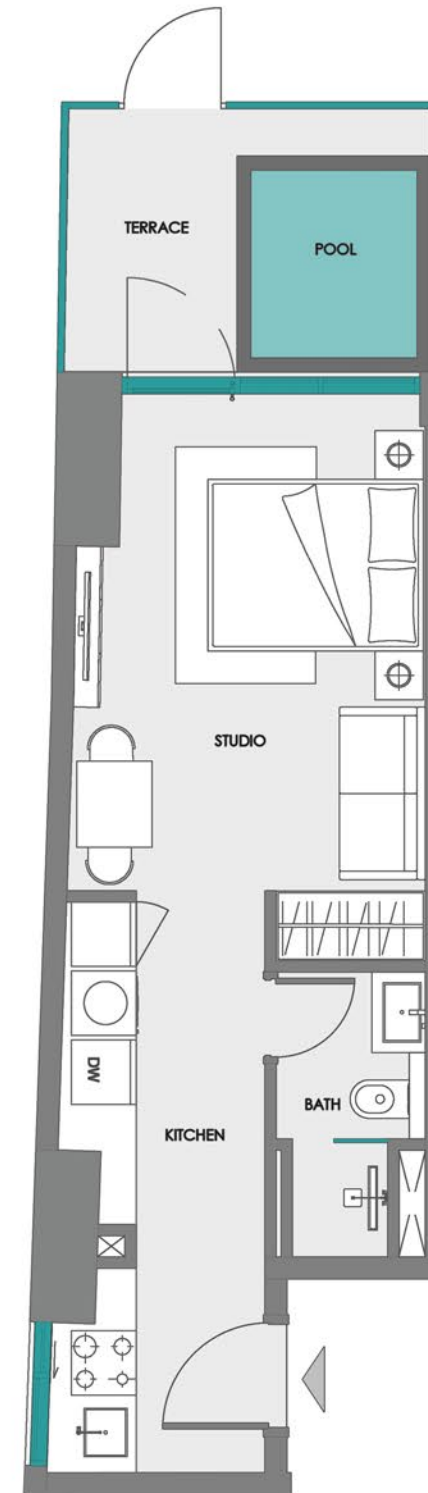


- Studio + Pool
  - 1 Bedroom + Pool
  - 1 Bedroom + Laundry + Pool
  - 2 Bedroom + Pool
  - 2 Bedroom + Store + Laundry + Pool
- 
- Duct
  - Circulation
  - Services
  - Amenities

STUDIO + POOL ( TYPE - 1 )



1<sup>ST</sup> FLOOR KEY PLAN  
UNIT 106



Disclaimer:

1. All room dimensions are measured to structural elements and exclude wall finishes and construction tolerances.
2. All dimensions have been provided by our consultant architects.
3. All materials, dimensions and drawings are approximate. Information is subject to change without notice.
4. Actual suite area may vary from the stated area. Drawings not to scale. The developer reserves the right to make revisions.
5. For each unit type, unit sizes and details might be slightly different. Please refer to the sales and purchase agreement for the actual size of each specific unit.
6. North direction as per the Keyplan



STUDIO + POOL ( TYPE - 2 )



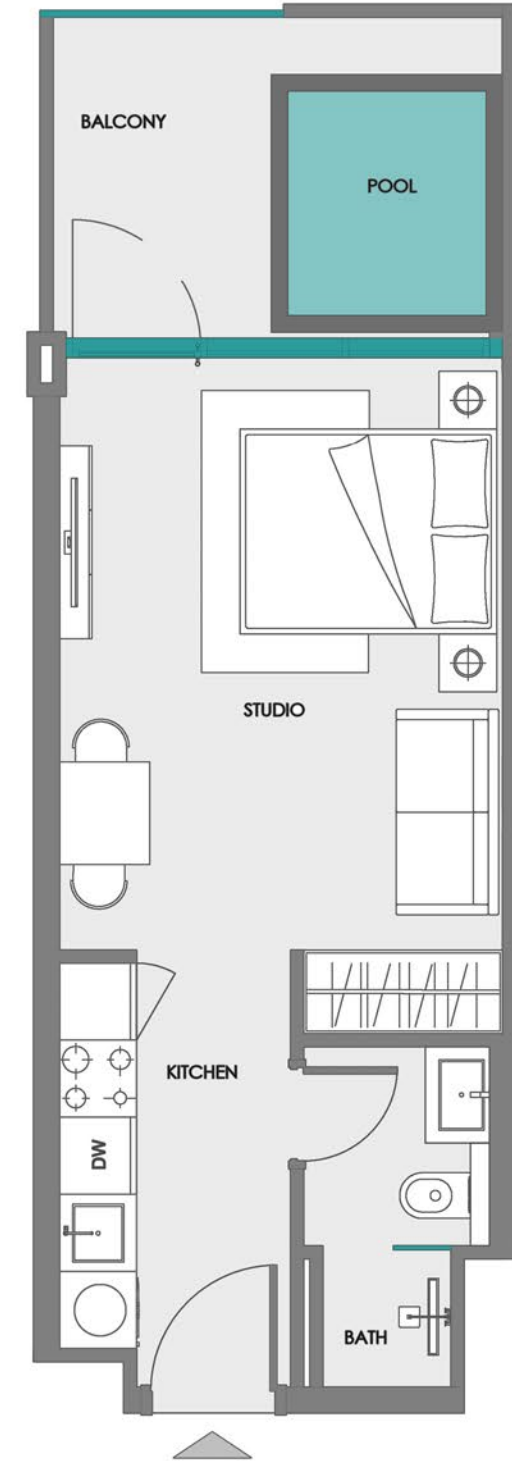
2<sup>ND</sup> - 17<sup>TH</sup>  
FLOOR KEY PLAN

UNIT  
201 - 1701, 204 - 1704  
205 - 1705, 223 - 1723  
224 - 1724, 225 - 1725



1<sup>ST</sup>  
FLOOR KEY PLAN

UNIT  
101, 104, 105, 123, 124, 125



Disclaimer:

1. All room dimensions are measured to structural elements and exclude wall finishes and construction tolerances.
2. All dimensions have been provided by our consultant architects.
3. All materials, dimensions and drawings are approximate. Information is subject to change without notice.
4. Actual suite area may vary from the stated area. Drawings not to scale. The developer reserves the right to make revisions.
5. For each unit type, unit sizes and details might be slightly different. Please refer to the sales and purchase agreement for the actual size of each specific unit.
6. North direction as per the Keyplan



STUDIO + POOL ( TYPE - 3 )



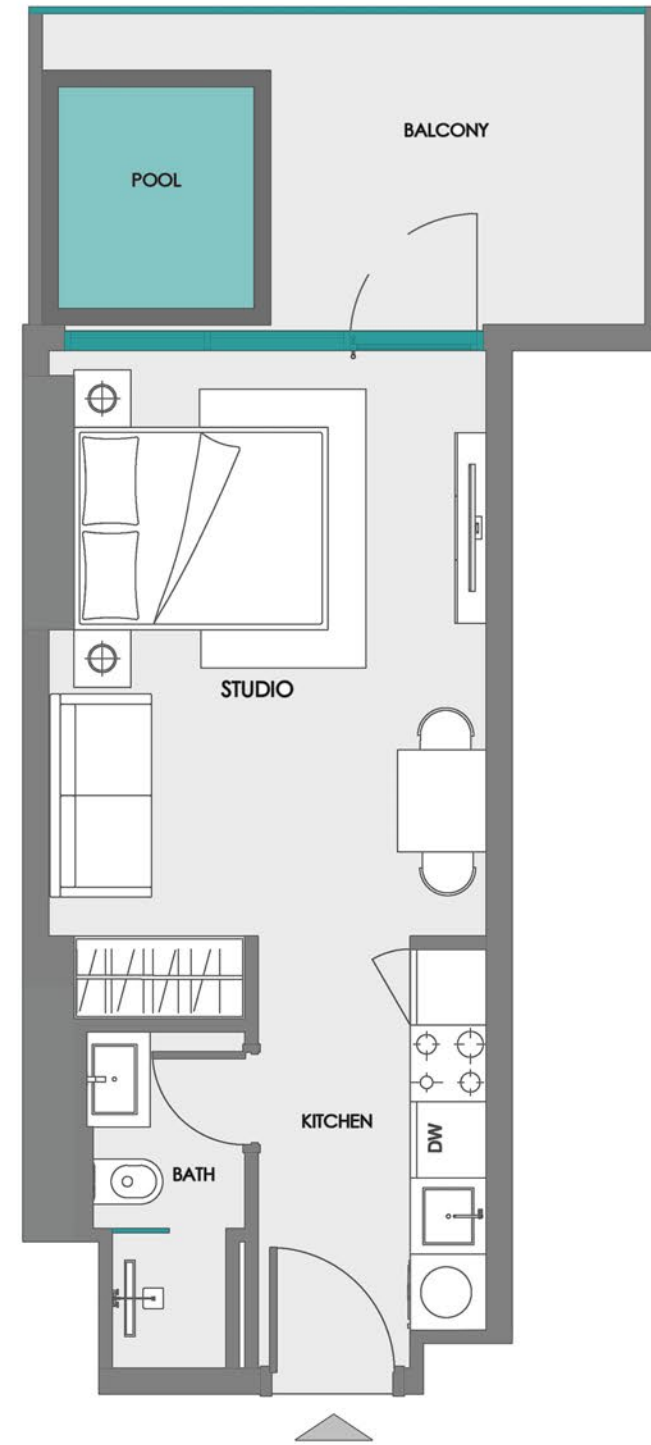
2<sup>ND</sup> - 17<sup>TH</sup>  
FLOOR KEY PLAN

UNIT  
202 - 1702, 203 - 1703



1<sup>ST</sup>  
FLOOR KEY PLAN

UNIT  
102, 103



Disclaimer:

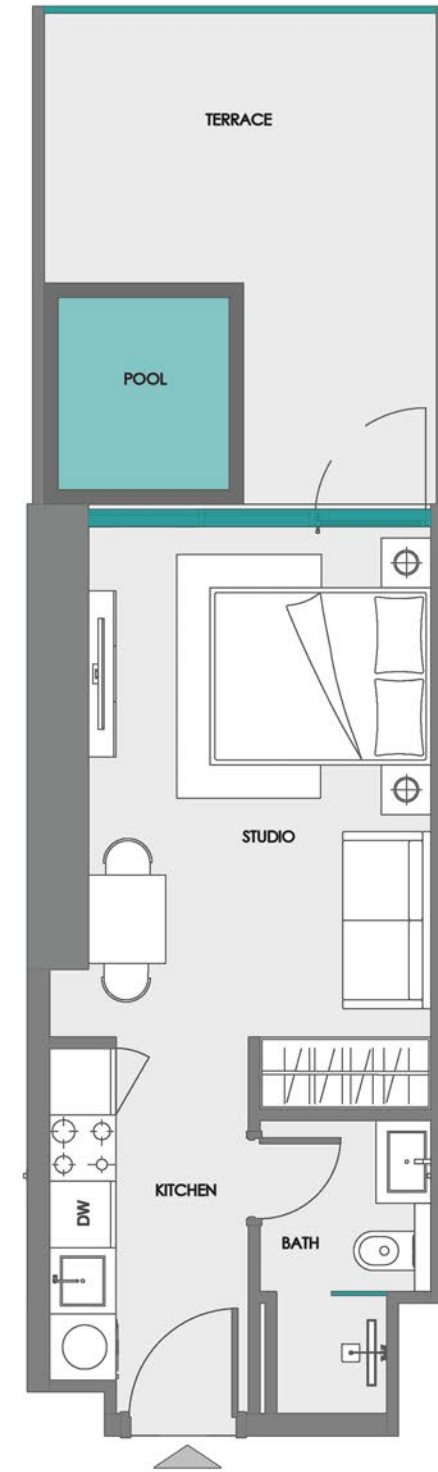
1. All room dimensions are measured to structural elements and exclude wall finishes and construction tolerances.
2. All dimensions have been provided by our consultant architects.
3. All materials, dimensions and drawings are approximate. Information is subject to change without notice.
4. Actual suite area may vary from the stated area. Drawings not to scale. The developer reserves the right to make revisions.
5. For each unit type, unit sizes and details might be slightly different. Please refer to the sales and purchase agreement for the actual size of each specific unit.
6. North direction as per the Keyplan



STUDIO + POOL ( TYPE - 4 )



1<sup>ST</sup> FLOOR KEY PLAN  
UNIT 108, 109, 110, 111, 112, 113, 114



Disclaimer:

1. All room dimensions are measured to structural elements and exclude wall finishes and construction tolerances.
2. All dimensions have been provided by our consultant architects.
3. All materials, dimensions and drawings are approximate. Information is subject to change without notice.
4. Actual suite area may vary from the stated area. Drawings not to scale. The developer reserves the right to make revisions.
5. For each unit type, unit sizes and details might be slightly different. Please refer to the sales and purchase agreement for the actual size of each specific unit.
6. North direction as per the Keyplan



STUDIO + POOL ( TYPE - 5)



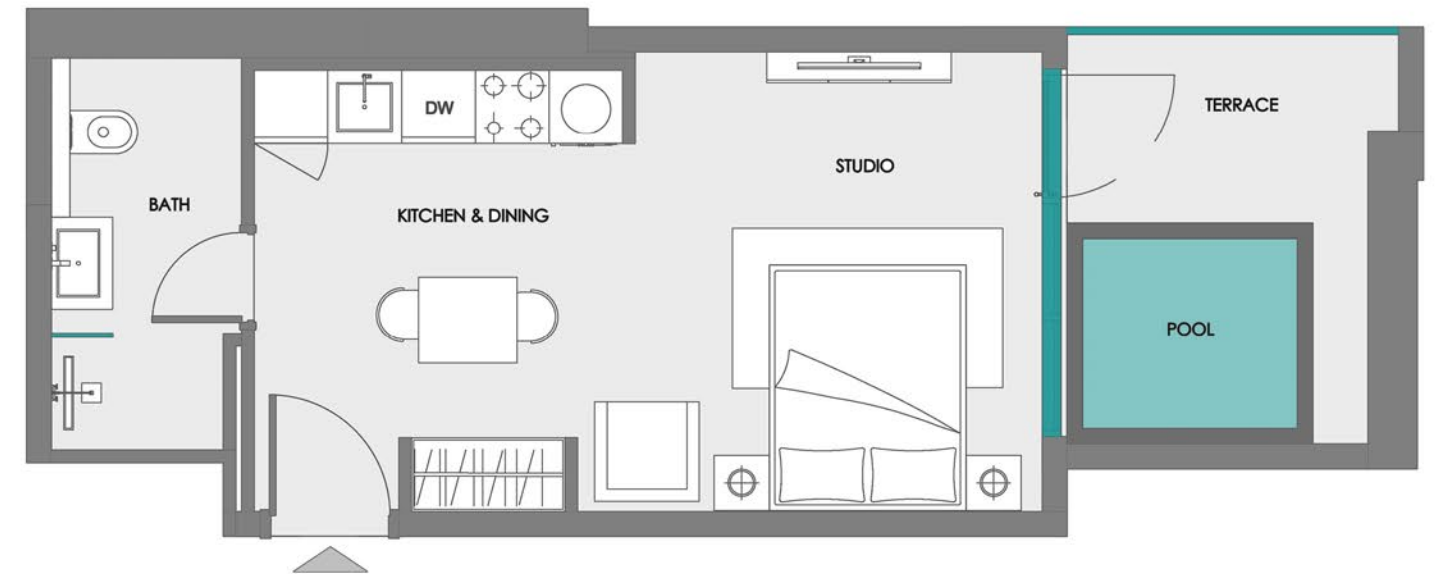
2<sup>ND</sup> - 17<sup>TH</sup>  
FLOOR KEY PLAN

UNIT  
229 - 1729



1<sup>ST</sup>  
FLOOR KEY PLAN

UNIT  
129



Disclaimer:

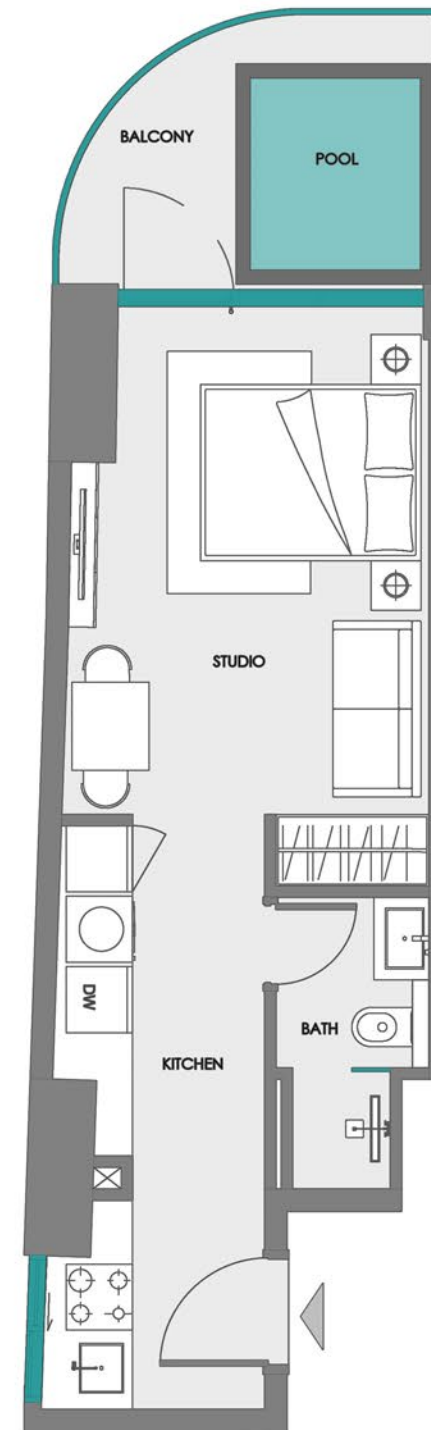
1. All room dimensions are measured to structural elements and exclude wall finishes and construction tolerances.
2. All dimensions have been provided by our consultant architects.
3. All materials, dimensions and drawings are approximate. Information is subject to change without notice.
4. Actual suite area may vary from the stated area. Drawings not to scale. The developer reserves the right to make revisions.
5. For each unit type, unit sizes and details might be slightly different. Please refer to the sales and purchase agreement for the actual size of each specific unit.
6. North direction as per the Keyplan



STUDIO + POOL ( TYPE - 6 )



2<sup>ND</sup> - 17<sup>TH</sup> FLOOR KEY PLAN  
UNIT 206 - 1706



Disclaimer:

1. All room dimensions are measured to structural elements and exclude wall finishes and construction tolerances.
2. All dimensions have been provided by our consultant architects.
3. All materials, dimensions and drawings are approximate. Information is subject to change without notice.
4. Actual suite area may vary from the stated area. Drawings not to scale. The developer reserves the right to make revisions.
5. For each unit type, unit sizes and details might be slightly different. Please refer to the sales and purchase agreement for the actual size of each specific unit.
6. North direction as per the Keyplan

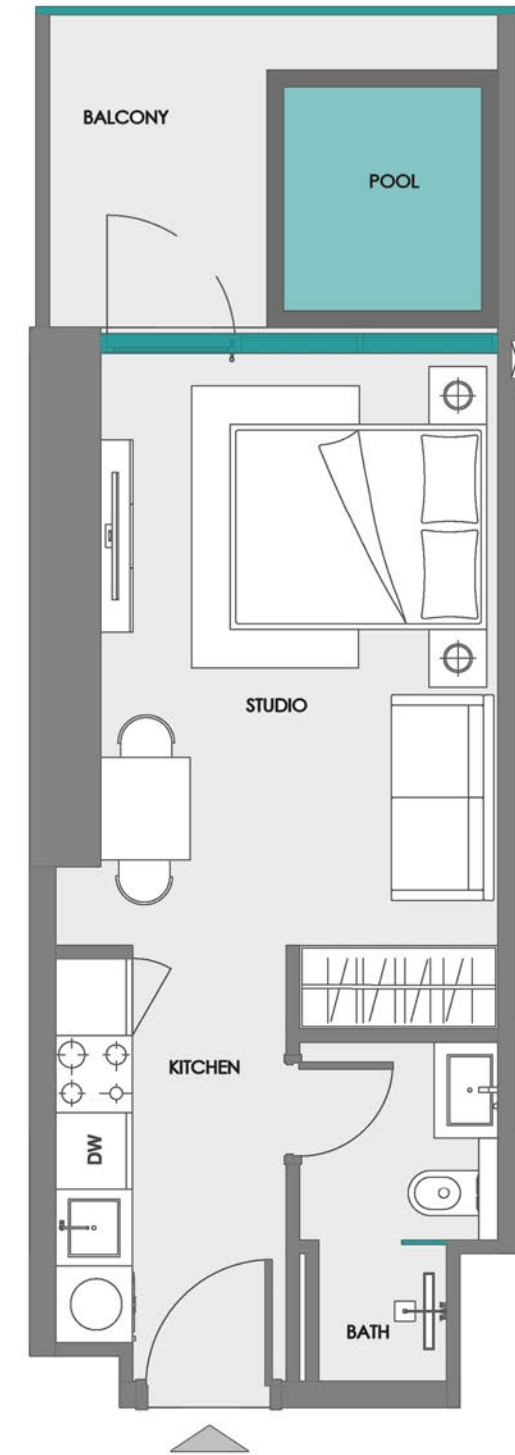


STUDIO + POOL ( TYPE - 7 )



2<sup>ND</sup> - 17<sup>TH</sup> FLOOR KEY PLAN

UNIT 208 - 1708, 209 - 1709,  
210 - 1710, 211 - 1711, 212 - 1712,  
213 - 1713, 214 - 1714



Disclaimer:

1. All room dimensions are measured to structural elements and exclude wall finishes and construction tolerances.
2. All dimensions have been provided by our consultant architects.
3. All materials, dimensions and drawings are approximate. Information is subject to change without notice.
4. Actual suite area may vary from the stated area. Drawings not to scale. The developer reserves the right to make revisions.
5. For each unit type, unit sizes and details might be slightly different. Please refer to the sales and purchase agreement for the actual size of each specific unit.
6. North direction as per the Keyplan



1 BEDROOM + LAUNDRY + POOL (TYPE 1)



1<sup>ST</sup> FLOOR KEY PLAN  
UNIT 116, 117, 118, 119, 120, 121



Disclaimer:

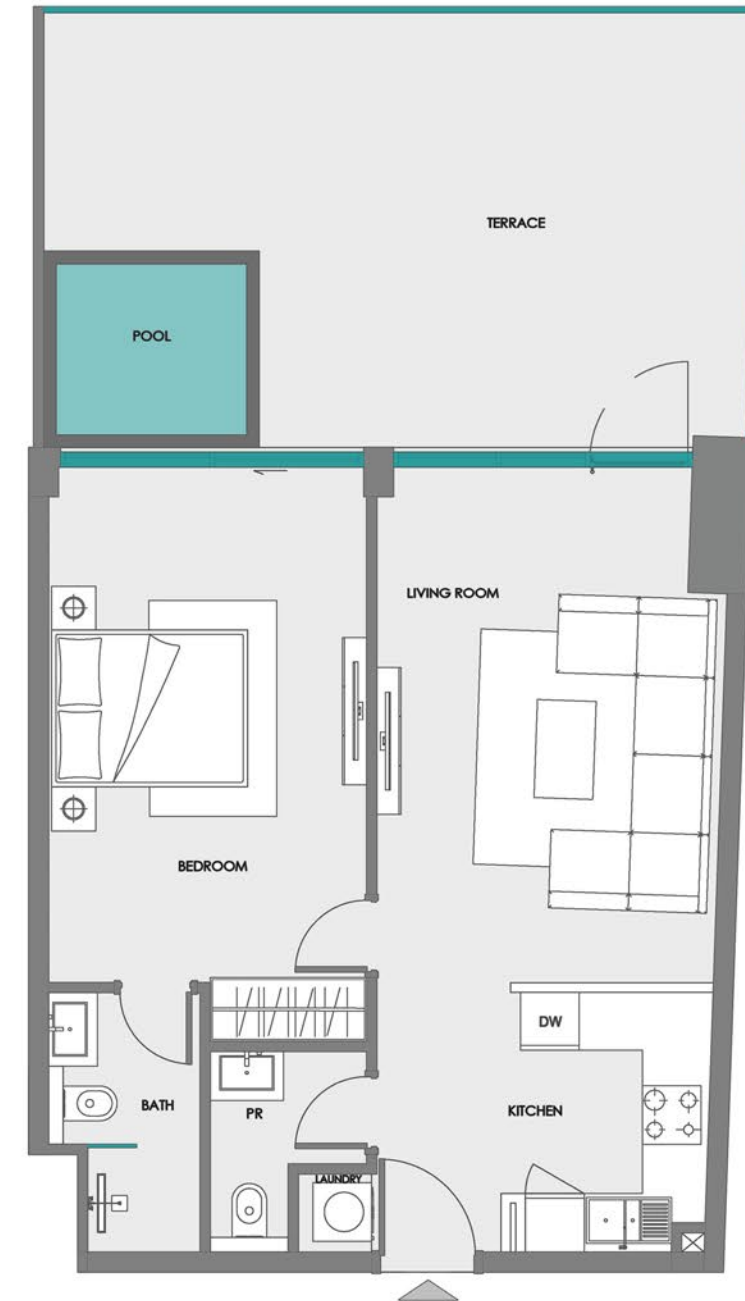
1. All room dimensions are measured to structural elements and exclude wall finishes and construction tolerances.
2. All dimensions have been provided by our consultant architects.
3. All materials, dimensions and drawings are approximate. Information is subject to change without notice.
4. Actual suite area may vary from the stated area. Drawings not to scale. The developer reserves the right to make revisions.
5. For each unit type, unit sizes and details might be slightly different. Please refer to the sales and purchase agreement for the actual size of each specific unit.
6. North direction as per the Keyplan



1 BEDROOM + LAUNDRY + POOL (TYPE 2)



1<sup>ST</sup> FLOOR KEY PLAN  
UNIT 107



Disclaimer:

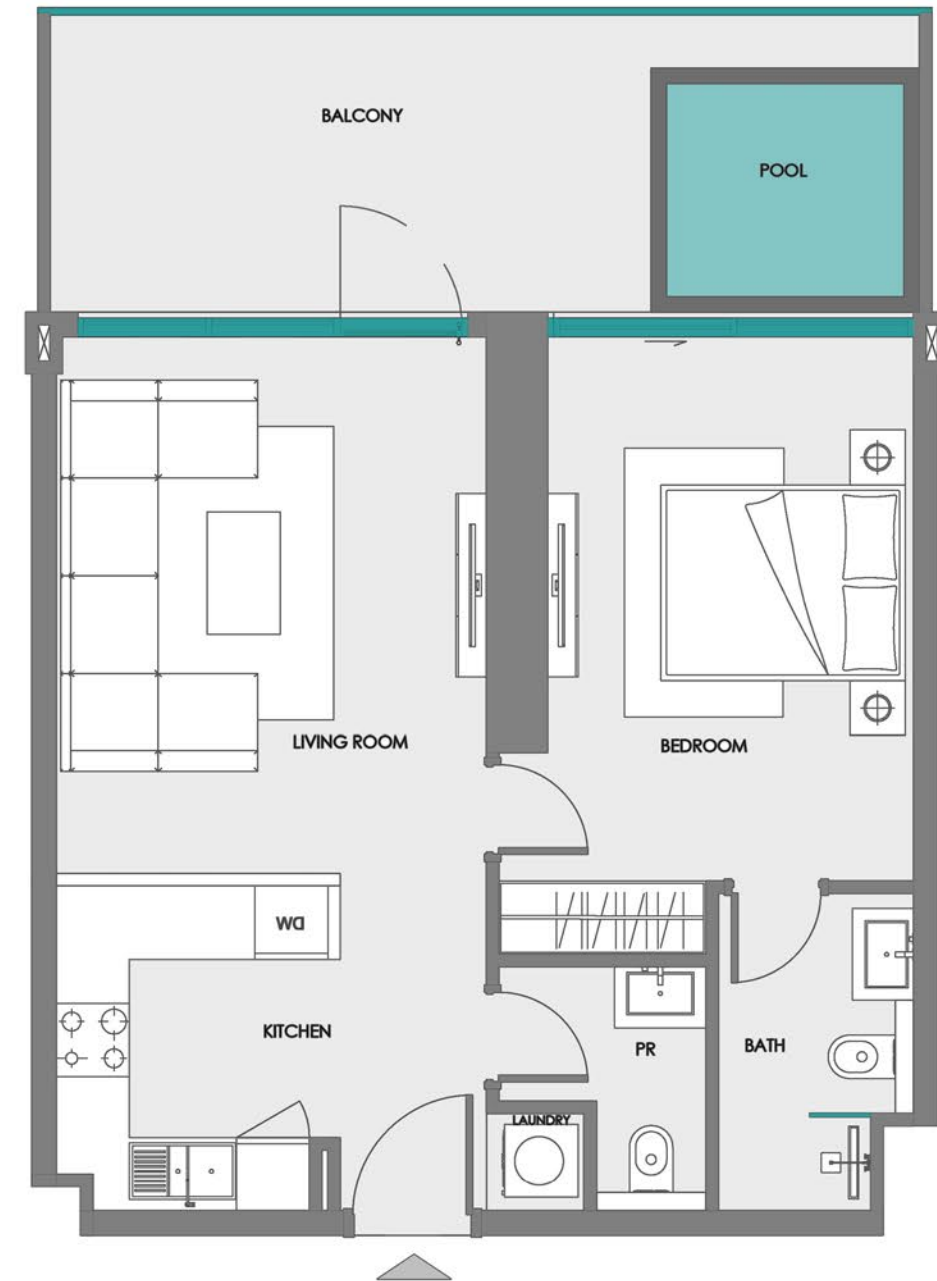
1. All room dimensions are measured to structural elements and exclude wall finishes and construction tolerances.
2. All dimensions have been provided by our consultant architects.
3. All materials, dimensions and drawings are approximate. Information is subject to change without notice.
4. Actual suite area may vary from the stated area. Drawings not to scale. The developer reserves the right to make revisions.
5. For each unit type, unit sizes and details might be slightly different. Please refer to the sales and purchase agreement for the actual size of each specific unit.
6. North direction as per the Keyplan



1 BEDROOM + LAUNDRY + POOL (TYPE 3)



2<sup>ND</sup> - 17<sup>TH</sup> FLOOR KEY PLAN  
UNIT 216 - 1716, 217 - 1717,  
218 - 1718, 219 - 1719, 220 - 1720,  
221 - 1721



Disclaimer:

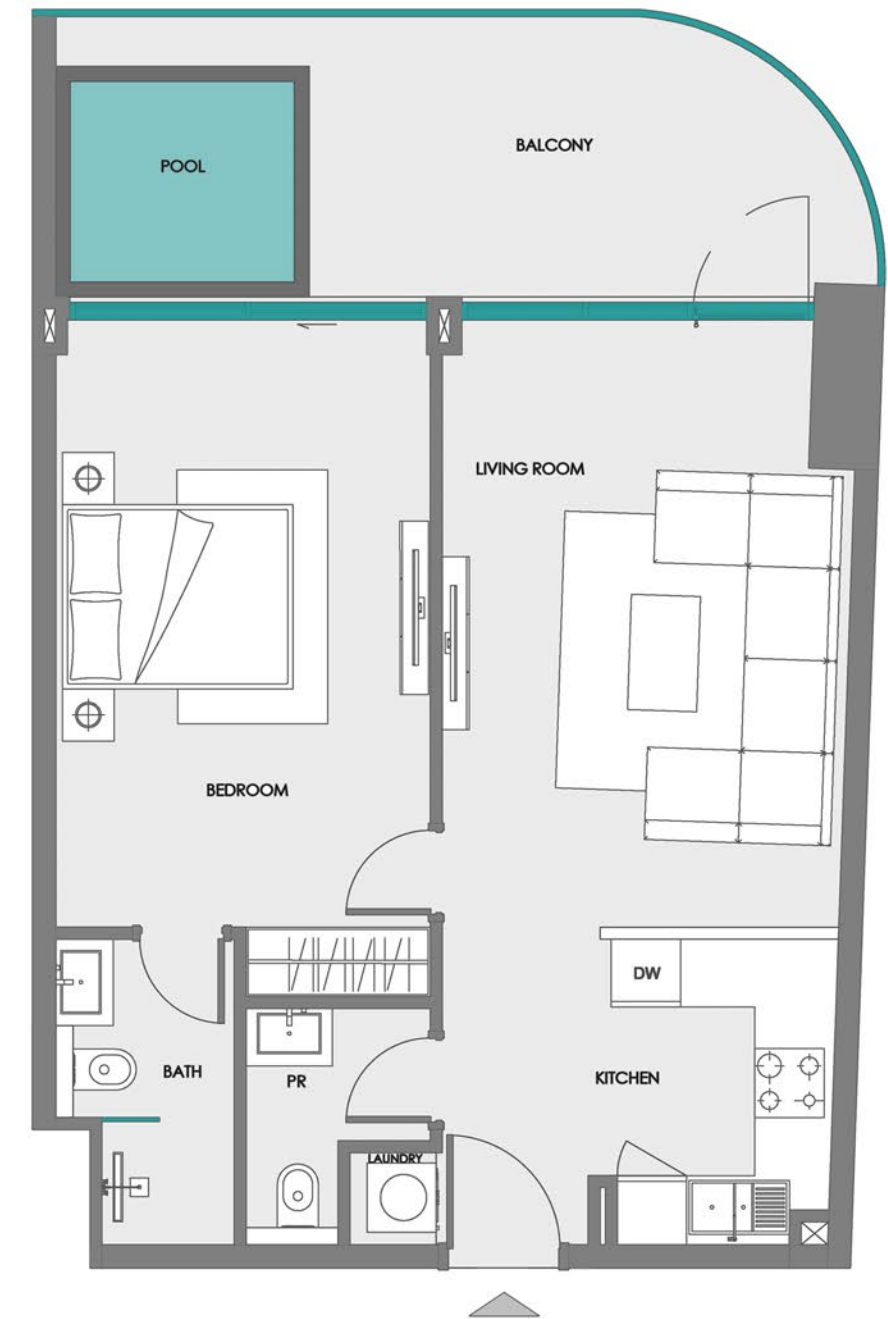
1. All room dimensions are measured to structural elements and exclude wall finishes and construction tolerances.
2. All dimensions have been provided by our consultant architects.
3. All materials, dimensions and drawings are approximate. Information is subject to change without notice.
4. Actual suite area may vary from the stated area. Drawings not to scale. The developer reserves the right to make revisions.
5. For each unit type, unit sizes and details might be slightly different. Please refer to the sales and purchase agreement for the actual size of each specific unit.
6. North direction as per the Keyplan



1 BEDROOM + LAUNDRY + POOL (TYPE 4)



2<sup>ND</sup> - 17<sup>TH</sup> FLOOR KEY PLAN  
UNIT 207 - 1707

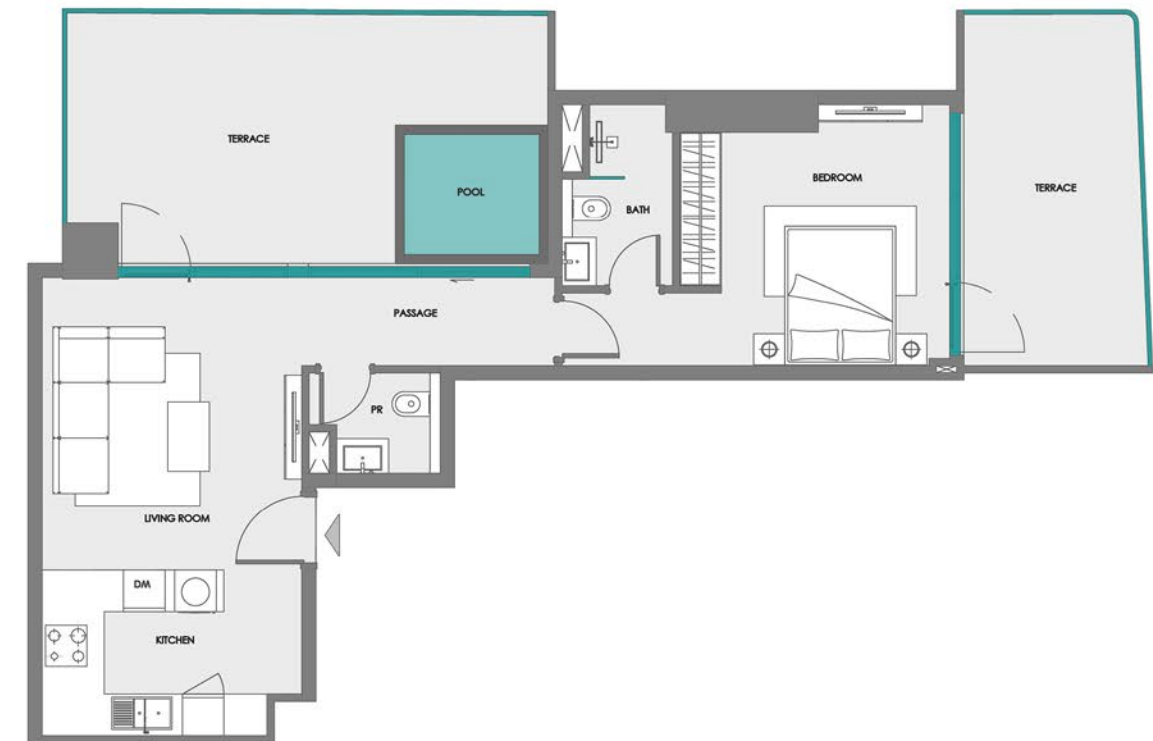


Disclaimer:

1. All room dimensions are measured to structural elements and exclude wall finishes and construction tolerances.
2. All dimensions have been provided by our consultant architects.
3. All materials, dimensions and drawings are approximate. Information is subject to change without notice.
4. Actual suite area may vary from the stated area. Drawings not to scale. The developer reserves the right to make revisions.
5. For each unit type, unit sizes and details might be slightly different. Please refer to the sales and purchase agreement for the actual size of each specific unit.
6. North direction as per the Keyplan



# 1 BEDROOM + POOL (TYPE 1)



1<sup>ST</sup> FLOOR KEY PLAN  
UNIT 128

**Disclaimer:**

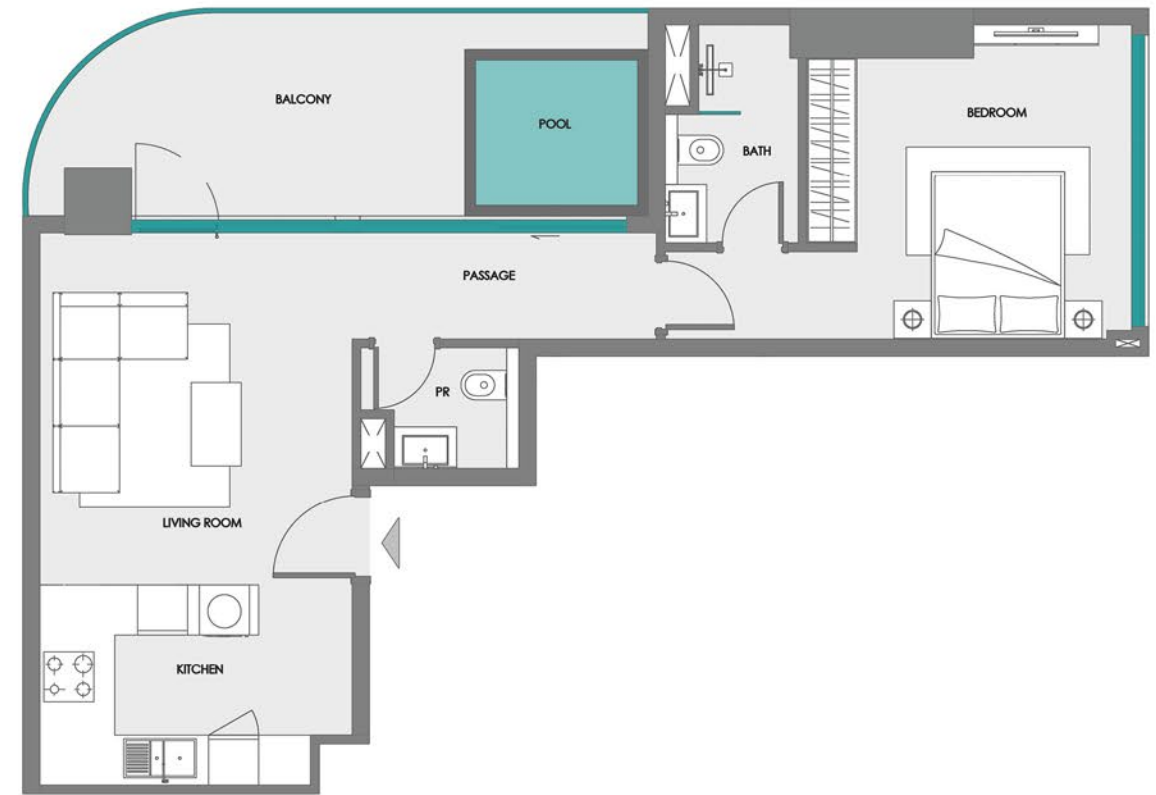
1. All room dimensions are measured to structural elements and exclude wall finishes and construction tolerances.
2. All dimensions have been provided by our consultant architects.
3. All materials, dimensions and drawings are approximate. Information is subject to change without notice.
4. Actual suite area may vary from the stated area. Drawings not to scale. The developer reserves the right to make revisions.
5. For each unit type, unit sizes and details might be slightly different. Please refer to the sales and purchase agreement for the actual size of each specific unit.
6. North direction as per the Keyplan



1 BEDROOM + POOL (TYPE 2)



2<sup>ND</sup> - 17<sup>TH</sup> FLOOR KEY PLAN  
UNIT 228 - 1728



Disclaimer:

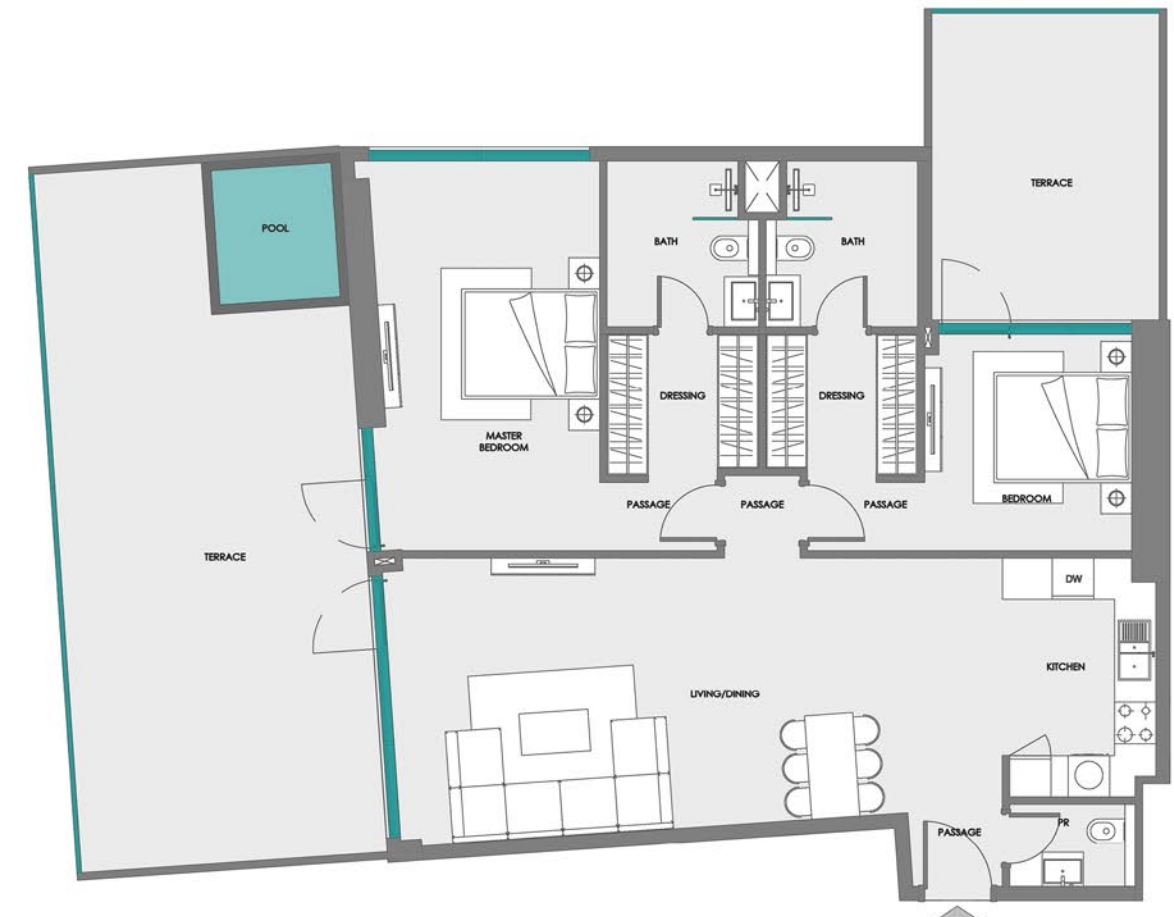
1. All room dimensions are measured to structural elements and exclude wall finishes and construction tolerances.
2. All dimensions have been provided by our consultant architects.
3. All materials, dimensions and drawings are approximate. Information is subject to change without notice.
4. Actual suite area may vary from the stated area. Drawings not to scale. The developer reserves the right to make revisions.
5. For each unit type, unit sizes and details might be slightly different. Please refer to the sales and purchase agreement for the actual size of each specific unit.
6. North direction as per the Keyplan



2 BEDROOM + POOL (TYPE 1)



1<sup>ST</sup> FLOOR KEY PLAN  
UNIT 115

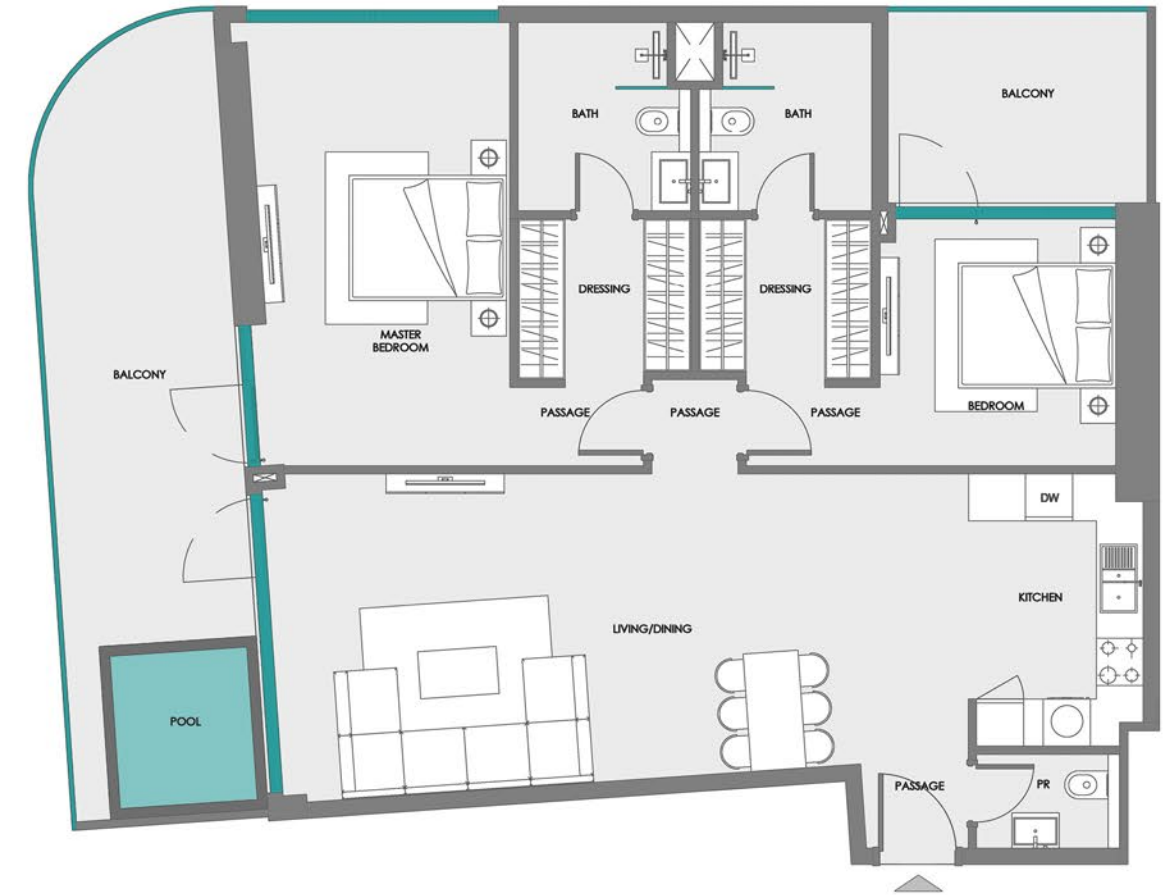


Disclaimer:

1. All room dimensions are measured to structural elements and exclude wall finishes and construction tolerances.
2. All dimensions have been provided by our consultant architects.
3. All materials, dimensions and drawings are approximate. Information is subject to change without notice.
4. Actual suite area may vary from the stated area. Drawings not to scale. The developer reserves the right to make revisions.
5. For each unit type, unit sizes and details might be slightly different. Please refer to the sales and purchase agreement for the actual size of each specific unit.
6. North direction as per the Keyplan



2 BEDROOM + POOL (TYPE 2)



2<sup>ND</sup> - 17<sup>TH</sup> FLOOR KEY PLAN  
UNIT 215 - 1715

Disclaimer:

1. All room dimensions are measured to structural elements and exclude wall finishes and construction tolerances.
2. All dimensions have been provided by our consultant architects.
3. All materials, dimensions and drawings are approximate. Information is subject to change without notice.
4. Actual suite area may vary from the stated area. Drawings not to scale. The developer reserves the right to make revisions.
5. For each unit type, unit sizes and details might be slightly different. Please refer to the sales and purchase agreement for the actual size of each specific unit.
6. North direction as per the Keyplan



2 BEDROOM + STORE + LAUNDRY + POOL (TYPE 1)



2<sup>ND</sup> - 17<sup>TH</sup> FLOOR KEY PLAN  
UNIT 222 - 1722



Disclaimer:

1. All room dimensions are measured to structural elements and exclude wall finishes and construction tolerances.
2. All dimensions have been provided by our consultant architects.
3. All materials, dimensions and drawings are approximate. Information is subject to change without notice.
4. Actual suite area may vary from the stated area. Drawings not to scale. The developer reserves the right to make revisions.
5. For each unit type, unit sizes and details might be slightly different. Please refer to the sales and purchase agreement for the actual size of each specific unit.
6. North direction as per the Keyplan



2 BEDROOM + STORE + LAUNDRY + POOL (TYPE 2)



1<sup>ST</sup> FLOOR KEY PLAN  
UNIT 122



Disclaimer:

1. All room dimensions are measured to structural elements and exclude wall finishes and construction tolerances.
2. All dimensions have been provided by our consultant architects.
3. All materials, dimensions and drawings are approximate. Information is subject to change without notice.
4. Actual suite area may vary from the stated area. Drawings not to scale. The developer reserves the right to make revisions.
5. For each unit type, unit sizes and details might be slightly different. Please refer to the sales and purchase agreement for the actual size of each specific unit.
6. North direction as per the Keyplan



# SAMANA

DEVELOPERS

**800-SAMANA**

[info@samanadevelopers.com](mailto:info@samanadevelopers.com)

[www.samanadevelopers.com](http://www.samanadevelopers.com)