



SOBHA  
REALTY

An aerial view of a modern city skyline at dusk. The sky is a mix of orange, pink, and blue. In the foreground, a prominent skyscraper with a glass facade and a large 'S' logo on its upper section is the focal point. This building features a rooftop pool with lounge chairs and a terrace area. Below the pool, there are several floors of terraces with greenery and outdoor seating. The surrounding city is filled with other high-rise buildings, some with lights on. In the background, a body of water is visible, reflecting the city lights and the sky. The overall atmosphere is one of a vibrant, modern urban environment.

LIVE WHERE  
THE SKY FEELS  
LIKE HOME

An aerial photograph of a city skyline at sunset. The sky is a gradient of orange and yellow, transitioning to a darker blue at the top. The city is filled with numerous skyscrapers, many of which are under construction, as evidenced by the presence of cranes. The Burj Khalifa is the most prominent building on the right side of the frame. The foreground shows a highway with multiple lanes and some lower-rise buildings. The overall atmosphere is hazy and golden, typical of a sunset over a dense urban area.

CITY OF  
SKYBOUND  
DREAMS

It began as a road through the desert, a  
promise stretching into the unknown

Today it stands as the  
heartbeat of Dubai, alive  
with motion and meaning.



# SHEIKH ZAYED ROAD

THE SPINE THAT BUILT A CITY.





Every tower along its edge  
speaks of courage and creation.

Every light reminds us that  
imagination has no finish line.

# DUBAI

A GLOBAL DESTINATION

Dubai was not built on land alone; it was built on belief. A belief that the impossible is only the beginning, and that ambition can rise from sand and sea.

From humble roots to the heights of global recognition, the city has become a living symbol of vision. Every dream that arrives finds a place to grow. Every culture leaves a mark that endures.



# THE LANGUAGE OF PROGRESS

The skyline is more than architecture; it is the handwriting of progress.

Each tower tells a story of courage, and every light carries a promise to the world that greatness is not given, it is created.



# WHERE **7** STORIES CONVERGE

Stretching from Abu Dhabi to Ras Al Khaimah, Sheikh Zayed Road is the spine of a nation, connecting seven emirates, seven cities, and seven distinct narratives into a unified vision.

Each kilometre resonates with ambition. Every tower, every light, every intersection mirrors determination, innovation, and the belief that excellence is cultivated, not granted

Along this path, Dubai emerges as a symbol where possibility meets motion, and every journey becomes a statement. The road itself narrates a story of connection, progress, and the promise of what lies ahead.

Abu Dhabi

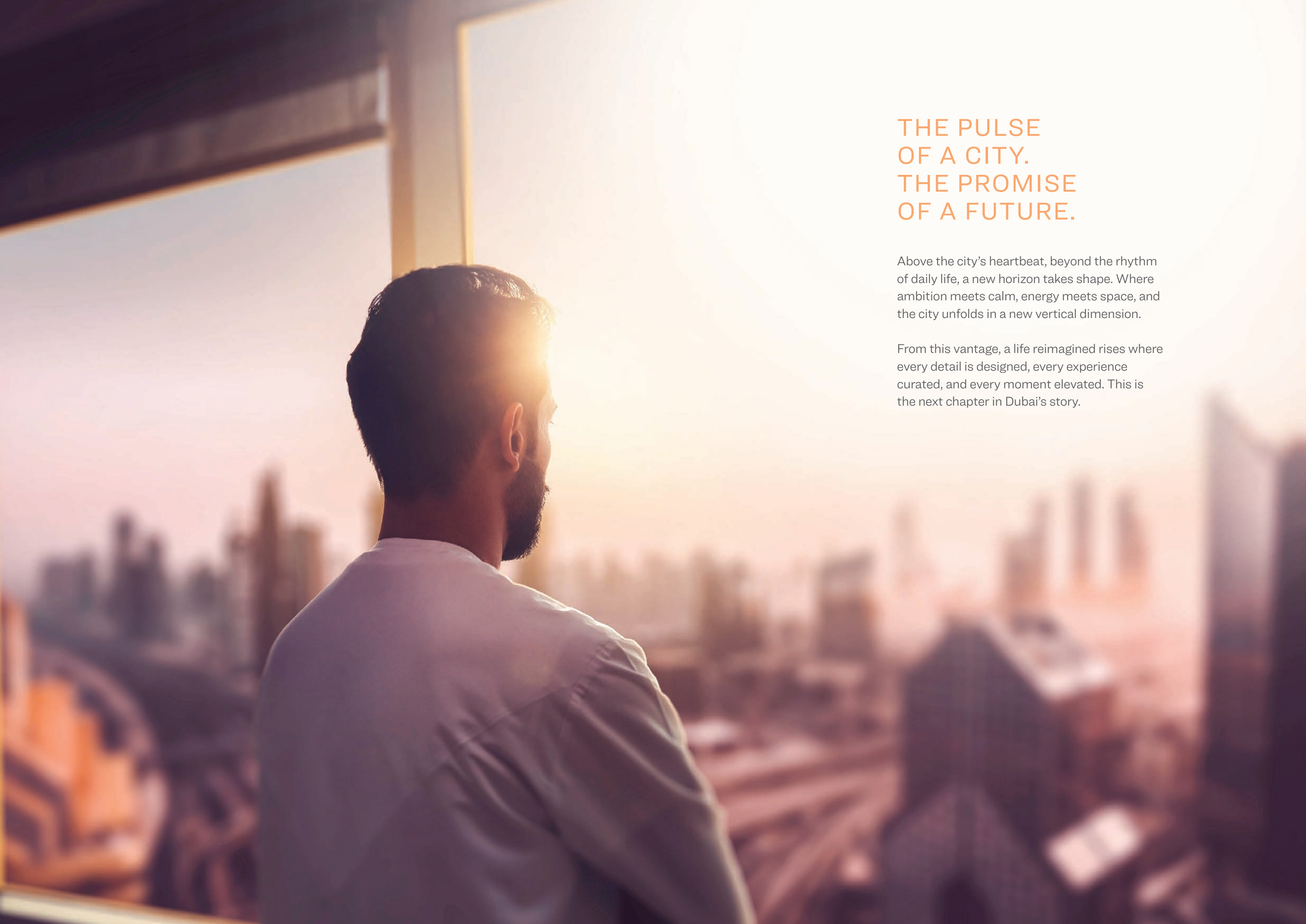


Dubai



Ras Al Khaimah



A man with a beard, wearing a white shirt, is seen from the side, looking out of a large window. The window offers a panoramic view of a city skyline at sunset. The sun is low on the horizon, creating a warm, golden glow that silhouettes the buildings and the man. The sky is a mix of soft pinks, oranges, and yellows. The city below is a dense collection of buildings, some of which are brightly lit, contrasting with the dimming light of the day. The overall mood is contemplative and hopeful.

## THE PULSE OF A CITY. THE PROMISE OF A FUTURE.

Above the city's heartbeat, beyond the rhythm of daily life, a new horizon takes shape. Where ambition meets calm, energy meets space, and the city unfolds in a new vertical dimension.

From this vantage, a life reimagined rises where every detail is designed, every experience curated, and every moment elevated. This is the next chapter in Dubai's story.

INTRODUCING

SOBHA  SKYPARKS

Rising along Sheikh Zayed Road, Sobha SkyParks is more than a landmark; it is a journey into the sky. Each level carries light, air, and calm, flowing through homes that breathe and spaces that feel alive. From street to skyline, every moment within Sobha SkyParks reminds you that life can be lived with openness, serenity, and connection to the city and sky alike.



# COME HOME TO A LIFE ABOVE THE CLOUDS.

Rising along Sheikh Zayed Road, a landmark emerges as a sanctuary where architecture meets emotion, and every height holds a story.

WELCOME TO SOBHA SKYPARKS,  
WHERE LIFE FEELS LIGHTER AND  
EVERY HORIZON BEGINS ANEW.





## THE NAME AND ITS INSPIRATION

Sobha SkyParks takes its spirit from four vertical gardens spanning six floors, each a haven of greenery and flowing trails. These elevated gardens create a sense of calm in the sky, offering a quiet retreat from the energy of the city below. It is a space where nature threads through daily life, allowing you to stroll among lush greenery, pause under shaded canopies, and feel grounded even at great heights amongst the clouds.

## THE ESSENCE OF SPACE

At Sobha SkyParks, every home is a stage for life in its fullest form. Sunlight pours through expansive windows, filling each room with warmth and welcoming the rhythm of daily living. Living spaces stretch freely, inviting movement, thought, and calm into every corner.

From levels 15 - 69, residents gaze over Sheikh Zayed Road, watching the city pulse with energy while the Arabian Sea shimmers in the distance. At higher floors of 70 - 108, golden sunsets spill across the skyline, painting towers, streets, and waves in hues of light and possibility.





## THE SKY AS YOUR LIVING ROOM

Imagine stepping onto the balcony after a long day at the 100th level or above. The air carries the faint scent of the sea, and the city below hums with quiet energy. You pause, taking in endless views that stretch from the skyline to the horizon, feeling the calm of open space surrounding you. Every moment is framed by light, openness, and a sense of freedom that only a home in Sobha SkyParks can offer.

## LIVING ON THE EDGE OF LIGHT

The higher you go, the more expansive life becomes. Living here is not just about height, it is about perspective, about space that breathes, about days that open with sunlight and evenings that close with golden serenity.

Sobha SkyParks is where the sky meets home, and every day becomes a horizon of endless possibility.



A LANDMARK  
PERFECTLY  
POISED BETWEEN  
CITY AND SKY

Positioned along Sheikh Zayed Road, Sobha SkyParks rises where movement meets calm. To the north, the Arabian Gulf shimmers under sunlight. To the south, sunsets bathe the skyline in gold. To the east, the city's landmarks trace the horizon in light. Steps from the metro, life unfolds with effortless access, yet every moment feels elevated, quietly above the rhythm of the city below.





## A TOWER THAT BREATHES VERTICALLY

A slender, sculpted form rising 450 meters into the sky.

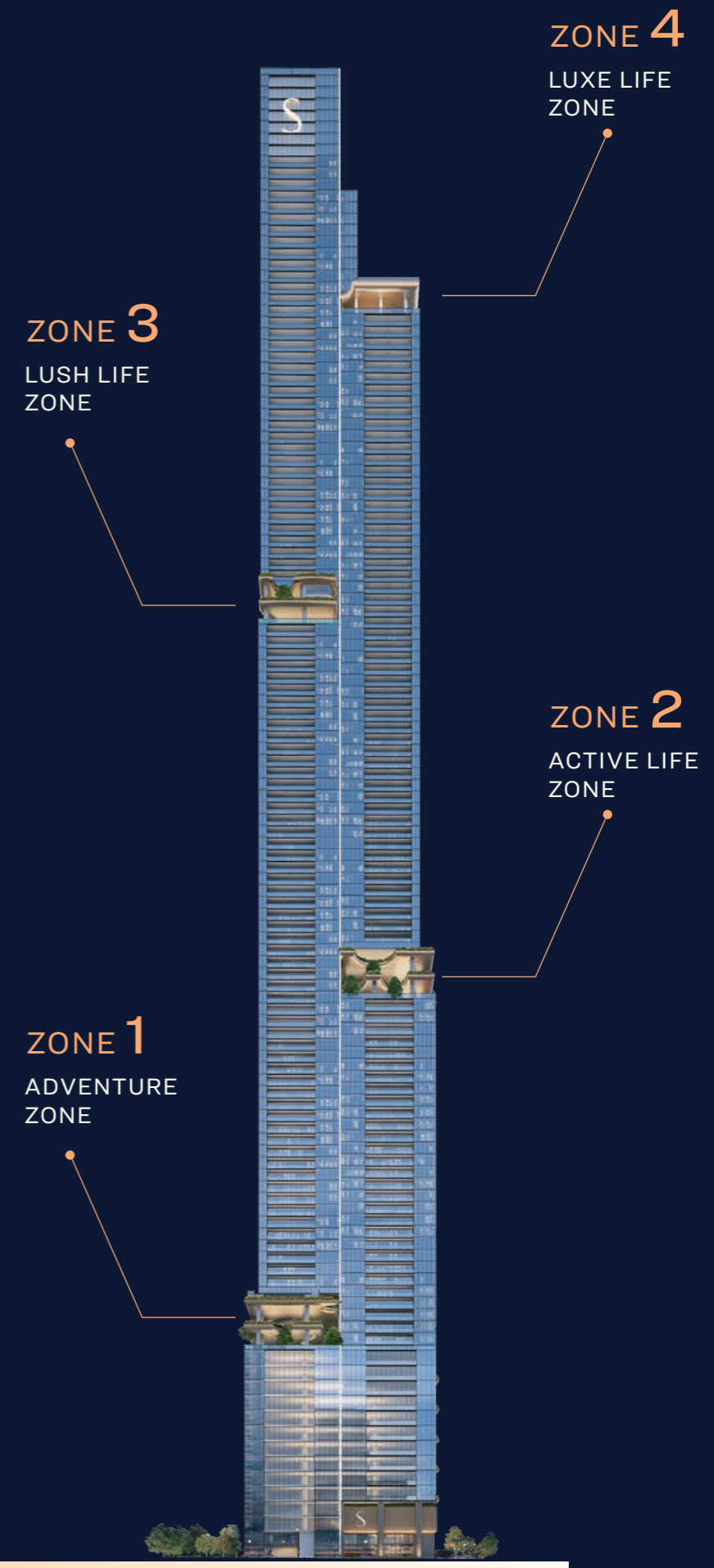
Two adjoining blocks rises in rhythm; their glass lines mirror the clouds by day and glow softly by night. It's a silhouette that feels both graceful and grounded, a masterpiece of proportion and poise. By day, it reflects the city. By night, it reflects the stars.

This is not a tower; it's an ascent into light.

450 M

# 4

WORLDS  
IN THE SKY



## THE SKYPARKS EXPERIENCE

While the tower carries Sobha's signature elegance, restrained and timeless, the SkyParks bring warmth, light, and celebration to the skyline. Rendered in golden hues and soft illumination, they are a declaration of life lived joyfully in the vertical.

Positioned at four various levels of the tower, the SkyParks create visual separation while forming immersive spaces that rise six stories each.

They blend indoor and outdoor experiences, crafting vibrant, layered environments filled with light, air, and movement.



4  
WORLDS  
IN THE SKY





# ADVENTURE ZONE



## ADVENTURE ZONE

HIGH ABOVE,  
HAPPINESS AWAITS

At Sobha SkyParks, mornings burst with laughter. Kids splash, climb, and chase the sun, while teens enjoy the gaming zone or padel court. Parents relax nearby, soaking in the joy that fills the air.

As the sun sets, stories take over with warm light, smiling faces, and moments that linger long after the day ends.









# ZONE 1

## ADVENTURE ZONE (FLOOR 13-18)



### LEVEL 01

- FAMILY POOL + KIDS POOL + SLIDE
- ROCK CLIMBING WALL
- KIDS PLAY AREA
- DOG PARK
- BUSINESS LOUNGE + MEETING ROOM
- MULTI PURPOSE HALL
- CINEMA
- ARCADE & GAMES ZONE
- TODDLER PLAY AREA
- CHILDREN PLAY AREA
- GYMNASIUM



### LEVEL 02

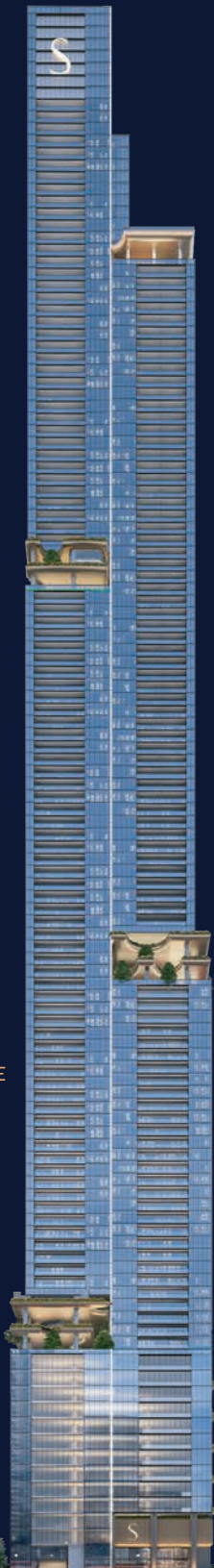
- SCULPTURE
- BESPOKE FURNITURE
- TODDLER PLAY AREA
- LAWN MOUND WITH TUNNEL
- ACTIVITY TOWER FOR KIDS
- SOUNDSCAPE PLAY



### LEVEL 03

- TRAMPOLINE + PLAY MOUND
- BESPOKE FURNITURE ELEMENTS
- PADEL COURT

ADVENTURE  
ZONE





ACTIVE LIFE  
ZONE

## ACTIVE LIFE ZONE

### WHERE MOTION MEETS THE HORIZON

Set across three cascading levels, each about seven meters high, the Sports SkyPark turns wellness into an experience. Run along skyline tracks, stretch on sunlit yoga decks, or power through calisthenics and circuit zones that buzz with energy.

And when you need to slow down, landscaped terraces and social corners invite connection, laughter, and calm.

At Sobha SkyParks, fitness rises higher, and so do you.















# ZONE 2

## ACTIVE LIFE (FLOOR 41-46)



### LEVEL 01

- CALISTHENICS GYM
- JOGGING TRACK
- PARKOUR
- NET PLAY



### LEVEL 02

- LAWN
- SEATING ZONES
- YOGA DECK
- VIRTUAL FITNESS



### LEVEL 03

- TRAMPOLINE + PLAY MOUND
- BESPOKE FURNITURE ELEMENTS
- ADULT FITNESS CIRCUIT
- BREAKOUT ZONE - FOOSEBALL
- SEATING / VIEWING DECK

ACTIVE LIFE  
ZONE



SOBHA  SKYPARKS

LUSH LIFE  
ZONE



**LUSH LIFE ZONE**  
**FIND CALM AMONG  
THE CLOUDS**

The Gardens SkyPark unfolds across three tranquil levels, where greenery, light, and stillness meet. Amid lush canopies, glass pavilions house quiet spaces to read, reflect, or simply breathe.

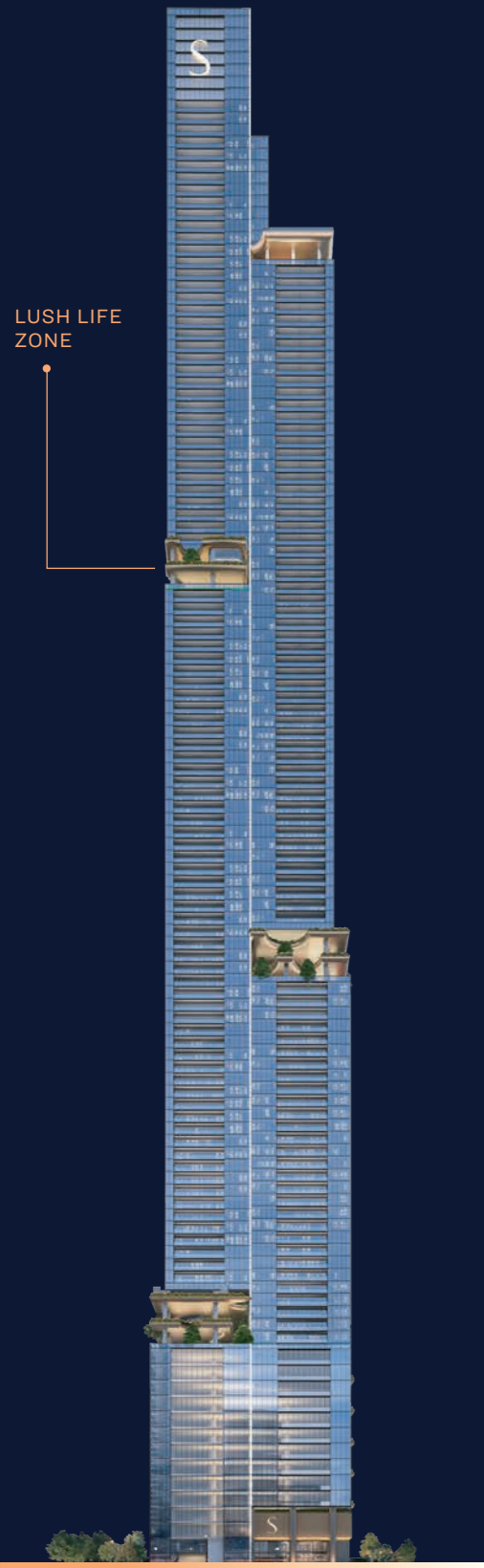
Outdoor nooks, zen gardens, and a sensory path invite slow moments of pause, where nature softens the skyline, and serenity takes root.



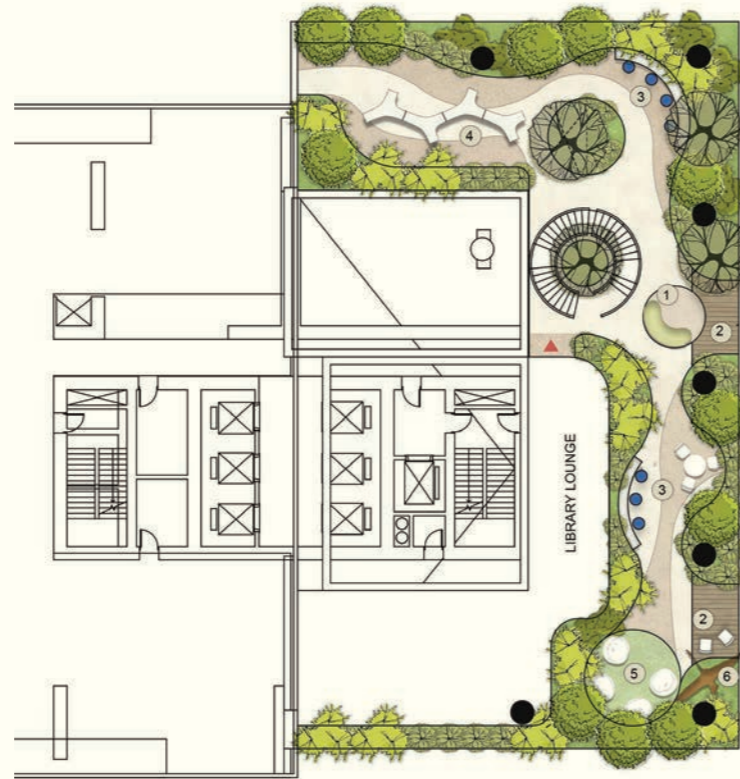
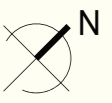




# ZONE 3



## LUSH LIFE (FLOOR 71-76)



### LEVEL 01

- WORKSPACE GARDEN
- LIBRARY AND LOUNGE
- LAWN



### LEVEL 02

- ZEN GARDEN
- SEATING NOOKS
- WATER FEATURE
- LEISURE / MAJALIS LOUNGE



### LEVEL 03

- WALKING LOOP
- URBAN FARMING
- SCULPTURE
- YOGA AND MEDITATION AREA



LUXE LIFE  
ZONE

## THE LUXLIFE SKYPARK

### WHERE THE HORIZON TURNS TO GOLD

High above the city, nearly 375mts in the air, the LuxLife SkyPark feels like a resort hidden in the clouds. Infinity pools stretch toward the skyline, framed by lush tropical greens and the calm of refined luxury.

Floating decks and private terraces invite conversation and quiet dinners as golden sunsets paint the horizon. Every moment feels alive, suspended between exhilaration and serenity above the city.





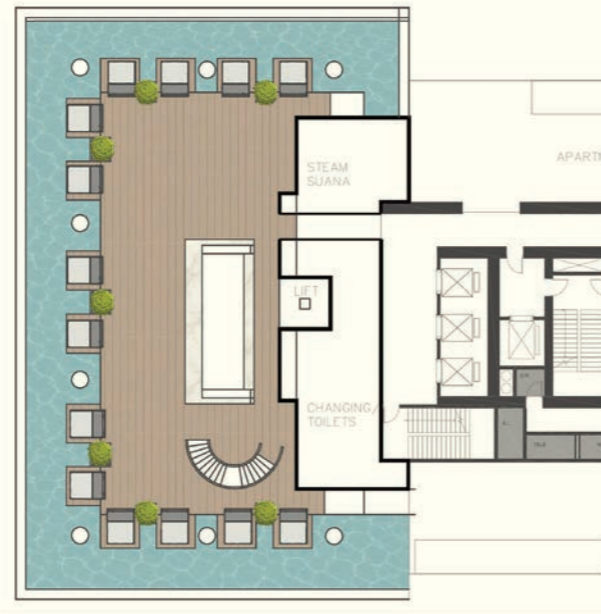


# ZONE 4

## LUXE LIFE (FLOOR 71-76)

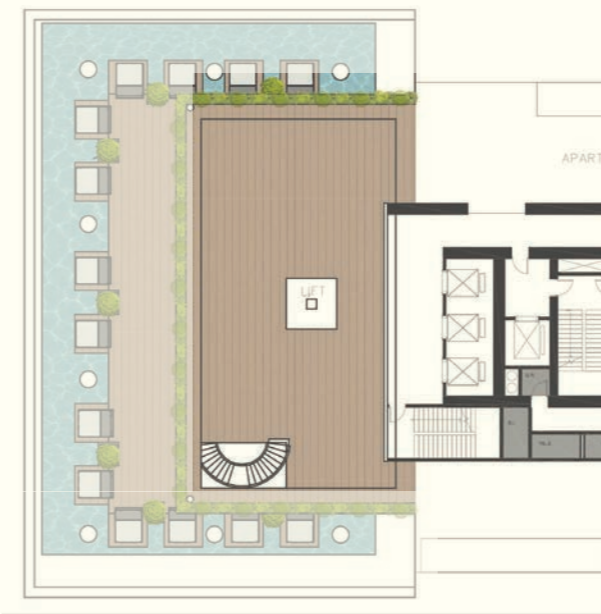


LUXE LIFE  
ZONE



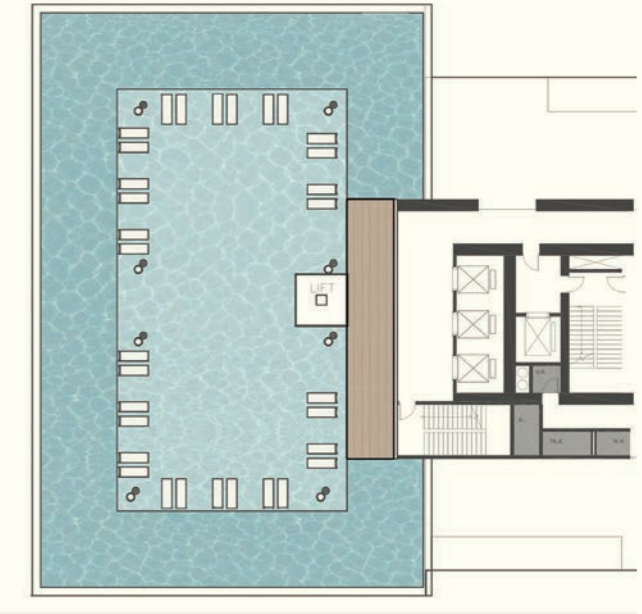
### LEVEL 01

- TOILETS/ CHANGING FACILITIES
- STEAM / SAUNA
- OUTDOOR KITCHEN
- LOUNGERS
- SHALLOW REFLECTION POOL
- PLATFORM LIFT



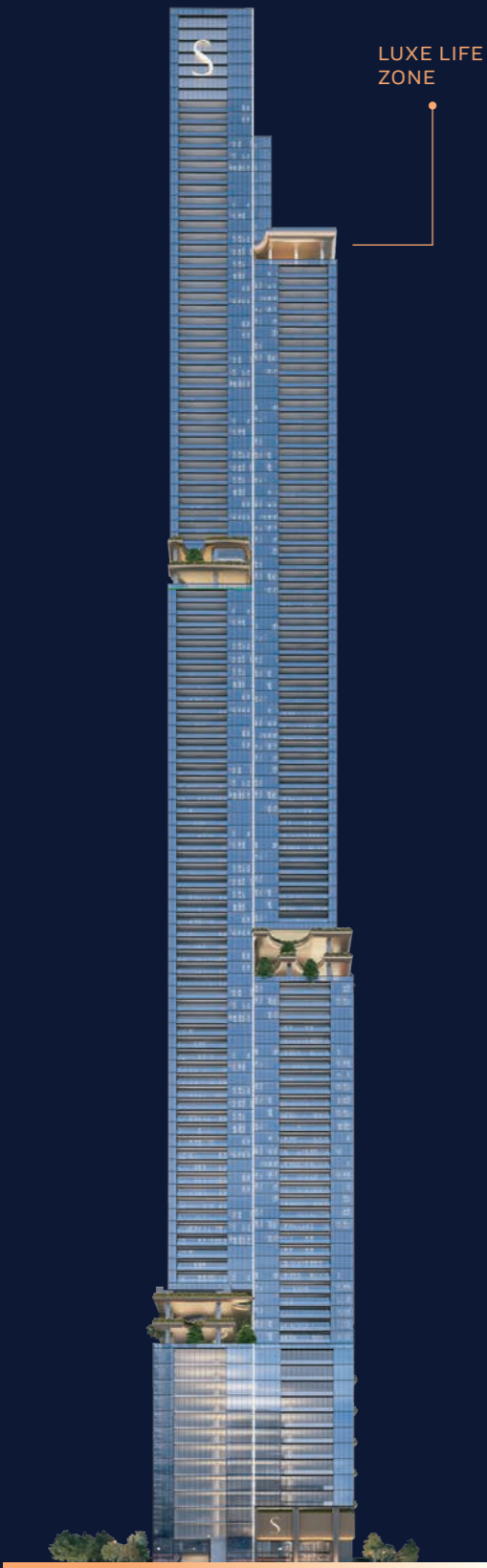
### LEVEL 02

- DECK
- PLATFORM LIFT



### LEVEL 03

- REFLECTION POOL
- SWIMMING POOL
- PLATFORM LIFT
- JACUZZI



## THE LOBBY

### LAYERS OF WELCOME

The lobby is not a threshold; it's a pause between city and sky. Light is sculpted into soft gradients across stone and timber.

Delicate metallic veils filter sunlight, inspired by regional craftsmanship and timeless artistry.

This is the first breath of the building, where warmth meets wonder, and welcome is felt before spoken.





## THE RESIDENCES

### LIFE ABOVE THE CITY

Each home feels like a quiet retreat above the city. Floor-to-ceiling windows open to skyline views and the sea beyond. Private balconies and sky parks bring the outdoors closer, letting life flow between home and horizon.

With 684 residences, from one- to four-bedroom homes and exclusive duplexes, Sobha SkyParks offers a calm, connected way of living, where space, light, and stillness come naturally.

## THE SKY LIVING EXPERIENCE

A LIFE ABOVE, YET  
DEEPLY GROUNDED

To live here is to experience both worlds, the pulse of Dubai below and the calm of the clouds above.

Sky living is not just about elevation but about emotion. It's the art of stillness amid motion, of being surrounded yet serene. Every sunrise feels personal. Every sunset feels infinite.















# LOCATION & CONNECTIVITY

Close to everywhere that matters, yet far enough to breathe.



**5** minutes to  
Business Bay

**7** minutes to  
Dubai Design District  
(D3)

**10** minutes to  
DIFC

**13** minutes to  
Downtown Dubai

**15** minutes to  
Jumeirah Beach

**20** minutes to Dubai  
International Airport



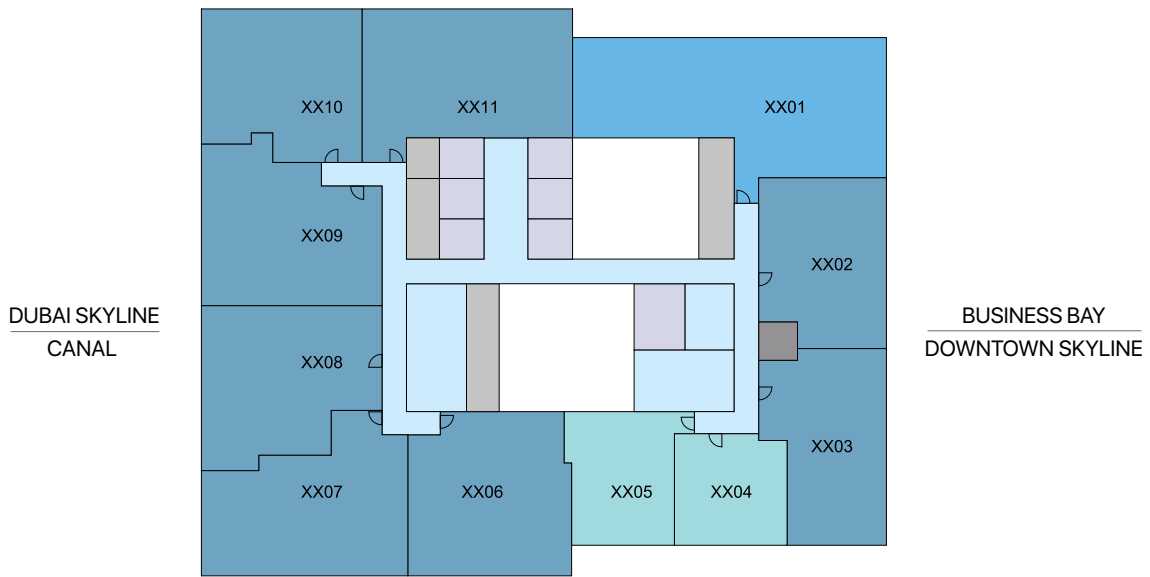
# FLOOR PLANS



SITE PLAN

DISCLAIMER: 1. ALL DIMENSIONS ARE IN METRIC, MEASURED TO WALL. 2. ALL DIMENSIONS & DRAWINGS ARE APPROXIMATE. 3. ACTUAL AREA MAY VARY FROM THE STATED AREA. 4. DRAWING ARE NOT TO SCALE. 5. LAYOUT REPRESENTATION AND IMAGES ARE FOR ILLUSTRATIVE PURPOSES ONLY AND MAY NOT REPRESENT THE ACTUAL SIZE. FEATURES, SPECIFICATIONS FOR KITCHEN FIXTURES, APPLIANCES, FITTINGS, FURNITURE OR FURNISHINGS AND FACADE, ACTUAL PRODUCTS AND DETAILS MAY VARY. 6. THE DEVELOPER RESERVES THE RIGHT TO MAKE REVISIONS/ ALTERATIONS, AT ITS ABSOLUTE DISCRETION, WITHOUT PRIOR INTIMATION OR ANY LIABILITY WHATSOEVER.

SZR  
SEA



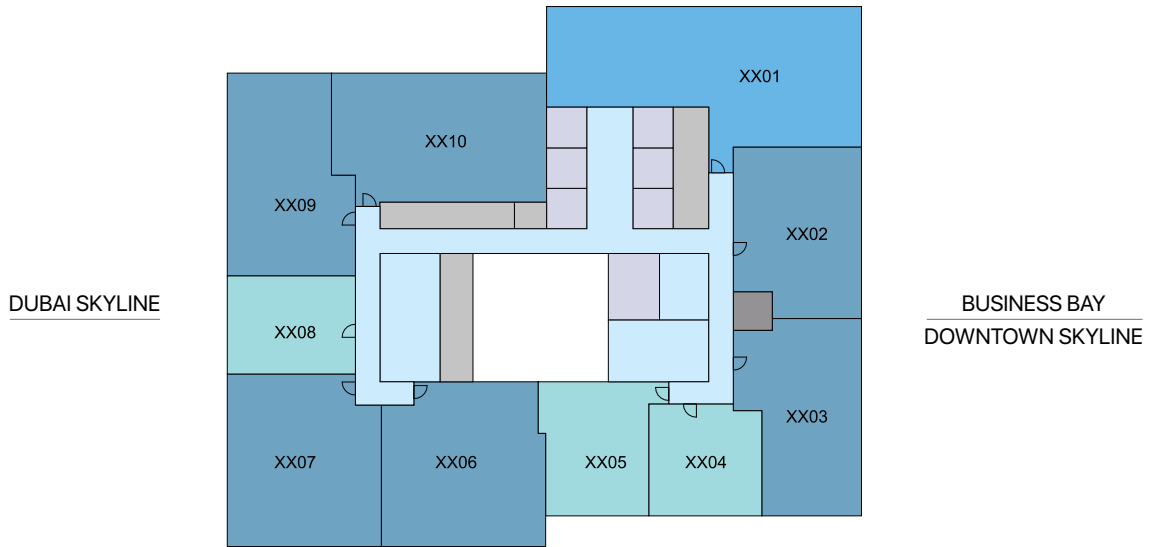
LEVEL 19 - 39

BUSINESS BAY  
CANAL

- 1 BED UNIT
- 2 BED UNIT
- 3 BED UNIT
- SKYGARDEN
- AMENITIES
- CIRCULATION
- SERVICES
- LIFTS
- GARBAGE ROOM



SZR  
SEA



LEVEL 47 - 69

BUSINESS BAY  
CANAL

1 BED UNIT  
2 BED UNIT

3 BED UNIT

SKYGARDEN  
AMENITIES

CIRCULATION  
SERVICES

LIFTS  
GARBAGE ROOM

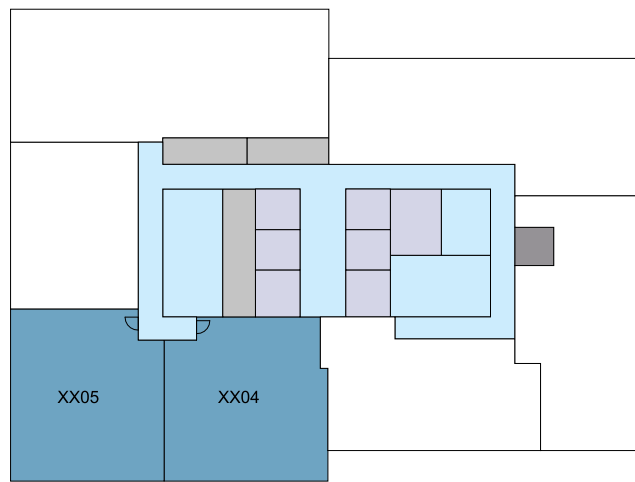


FLOOR AND UNIT PLANS

SZR  
SEA

DUBAI SKYLINE

BUSINESS BAY  
DOWNTOWN SKYLINE



LEVEL 77 - 92

BUSINESS BAY  
CANAL

1 BED UNIT  
2 BED UNIT

3 BED UNIT

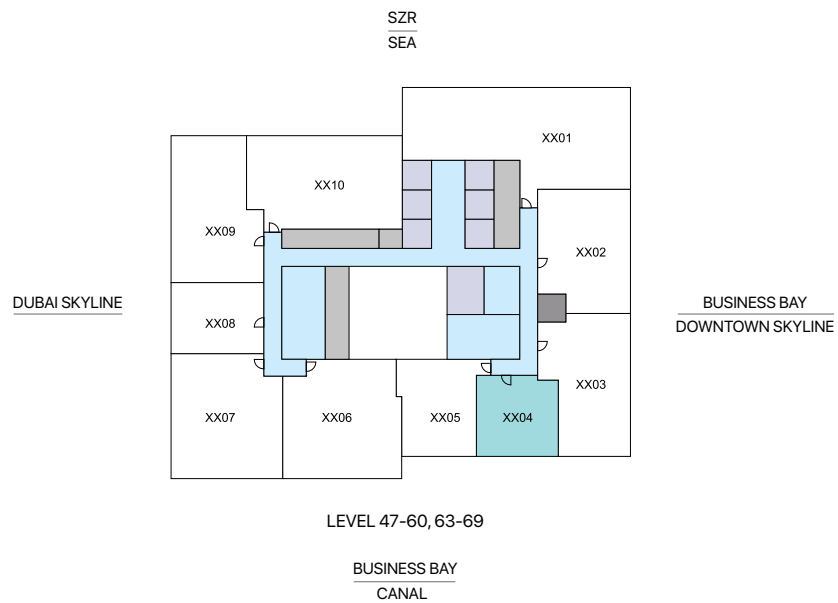
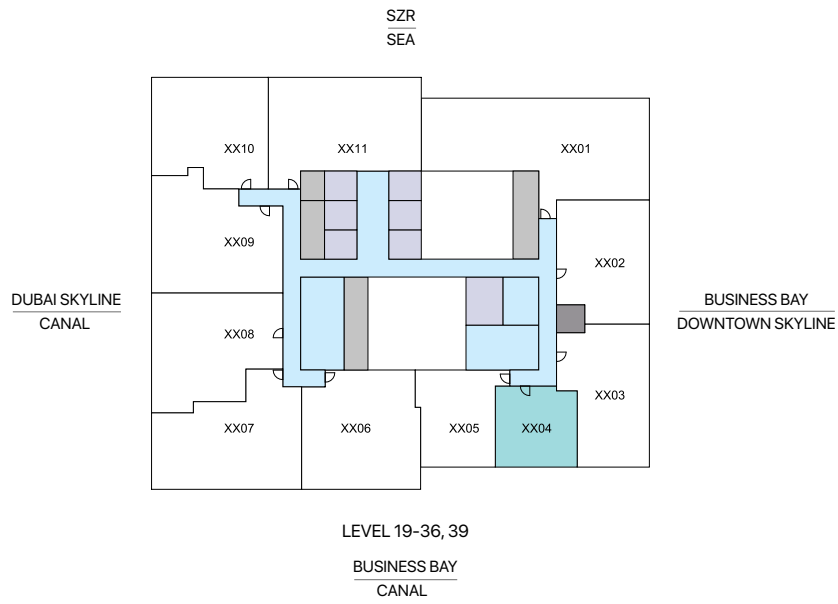
SKYGARDEN  
AMENITIES

CIRCULATION  
SERVICES

LIFTS  
GARBAGE ROOM



FLOOR AND UNIT PLANS



# 1

**BEDROOM APARTMENT**  
**TYPE A**  
(with powder + balcony)

**TOTAL SALEABLE AREA**  
SUITE = 655.31 SQ.FT.  
BALCONY = 60.28 SQ.FT.  
TOTAL = 715.59 SQ.FT.

List of unit numbers with this unit plan:

### VIEWS

**Business Bay**  
1904, 2004, 2104, 2204, 2304, 2404, 2504, 2604,  
2704, 2804, 2904, 3004, 3104, 3204, 3304, 3404,  
3504, 3604, 3904

**Business Bay, Canal View**  
4704, 4804, 4904, 5004, 5104, 5204, 5304, 5404,  
5504, 5604, 5704, 5804, 5904, 6004, 6304,  
6404, 6504, 6604, 6704, 6804, 6904





1 BED UNIT



# 1

**BEDROOM APARTMENT**  
**TYPE A**  
(with powder + balcony)

**TOTAL SALEABLE AREA**

SUITE = 655.31 SQ.FT.  
BALCONY = 60.28 SQ.FT.  
TOTAL = 715.59 SQ.FT.

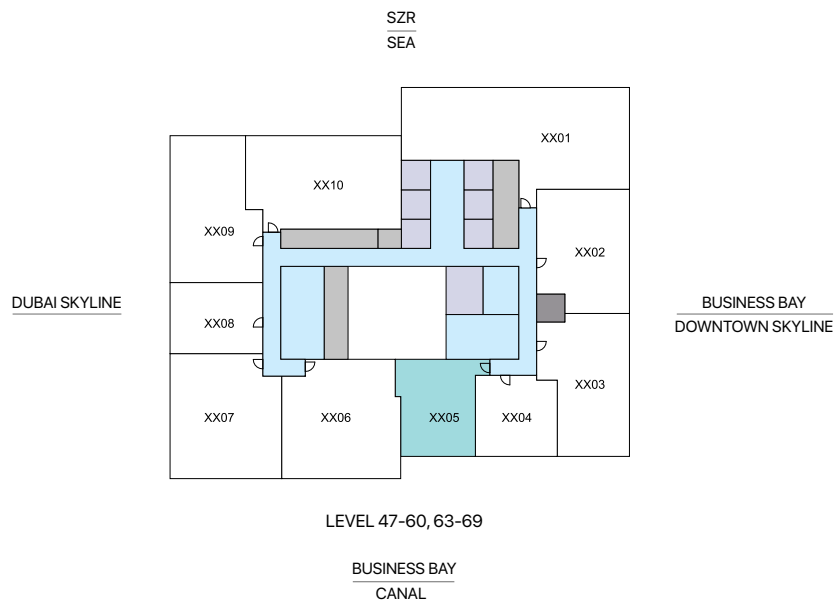
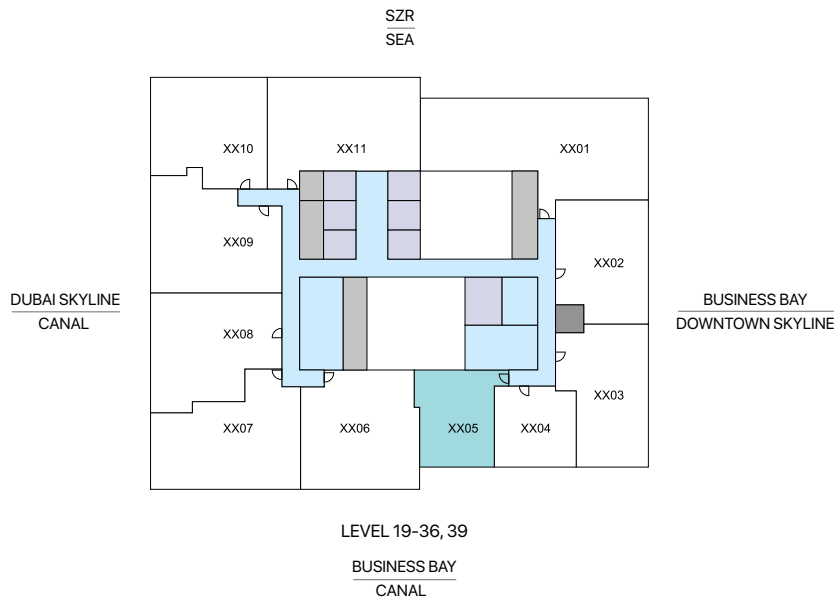
List of unit numbers with this unit plan:

**VIEWS**

**Business Bay**  
1904, 2004, 2104, 2204, 2304, 2404, 2504, 2604,  
2704, 2804, 2904, 3004, 3104, 3204, 3304, 3404,  
3504, 3604, 3904

**Business Bay, Canal View**  
4704, 4804, 4904, 5004, 5104, 5204, 5304, 5404,  
5504, 5604, 5704, 5804, 5904, 6004, 6304,  
6404, 6504, 6604, 6704, 6804, 6904





# 1

**BEDROOM APARTMENT**  
**TYPE B**  
(with powder + balcony)

**TOTAL SALEABLE AREA**

SUITE RANGE = 806.97 - 808.48 SQ.FT.  
BALCONY RANGE = 61.57 - 61.68 SQ.FT.  
TOTAL RANGE = 868.54 - 870.16 SQ.FT.

List of unit numbers with this unit plan:

**VIEWS**

**Business Bay**  
1905, 2005, 2105, 2205, 2305, 2405, 2505, 2605,  
2705, 2805, 2905, 3005, 3105, 3205, 3305, 3405,  
3505, 3605, 3905

**Business Bay, Canal View**  
4705, 4805, 4905, 5005, 5105, 5205, 5305, 5405,  
5505, 5605, 5705, 5805, 5905, 6005, 6305, 6405,  
6505, 6605, 6705, 6805, 6905





1 BED UNIT



# 1 BEDROOM APARTMENT

**TYPE B**  
(with powder + balcony)

## TOTAL SALEABLE AREA

SUITE RANGE = 806.97 - 808.48 SQ.FT.  
BALCONY RANGE = 61.57 - 61.68 SQ.FT.  
TOTAL RANGE = 868.54 - 870.16 SQ.FT.

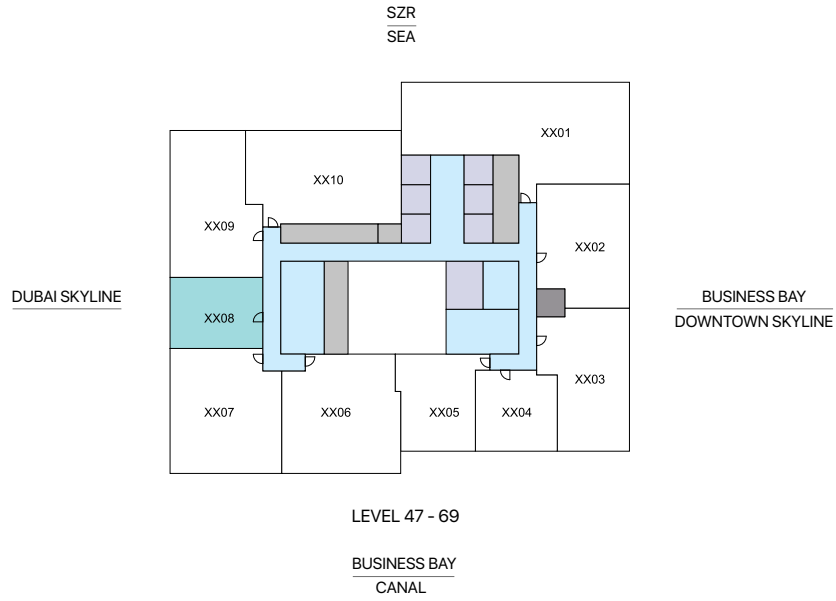
List of unit numbers with this unit plan:

## VIEWS

**Business Bay**  
1905, 2005, 2105, 2205, 2305, 2405, 2505, 2605,  
2705, 2805, 2905, 3005, 3105, 3205, 3305, 3405,  
3505, 3605, 3905

**Business Bay, Canal View**  
4705, 4805, 4905, 5005, 5105, 5205, 5305, 5405,  
5505, 5605, 5705, 5805, 5905, 6005, 6305, 6405,  
6505, 6605, 6705, 6805, 6905





**1** BEDROOM APARTMENT  
**TYPE C**  
 (with powder + balcony)

**TOTAL SALEABLE AREA**  
 SUITE = 562.20 SQ.FT.  
 BALCONY = 122.39 SQ.FT.  
 TOTAL = 684.59 SQ.FT.

List of unit numbers with this unit plan:

**VIEWS**

SZR, Dubai Skyline  
 4708, 4808, 4908, 5008, 5108, 5208, 5308, 5408,  
 5508, 5608, 5708, 5808, 5908, 6008, 6108, 6208,  
 6308, 6408, 6508, 6608, 6708, 6808, 6908





1 BED UNIT



**1** BEDROOM APARTMENT  
**TYPE C**  
 (with powder + balcony)

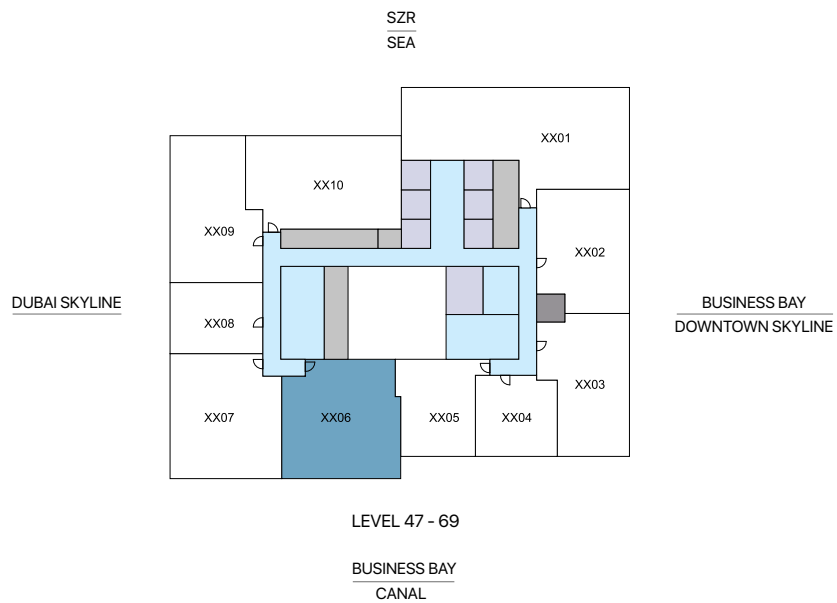
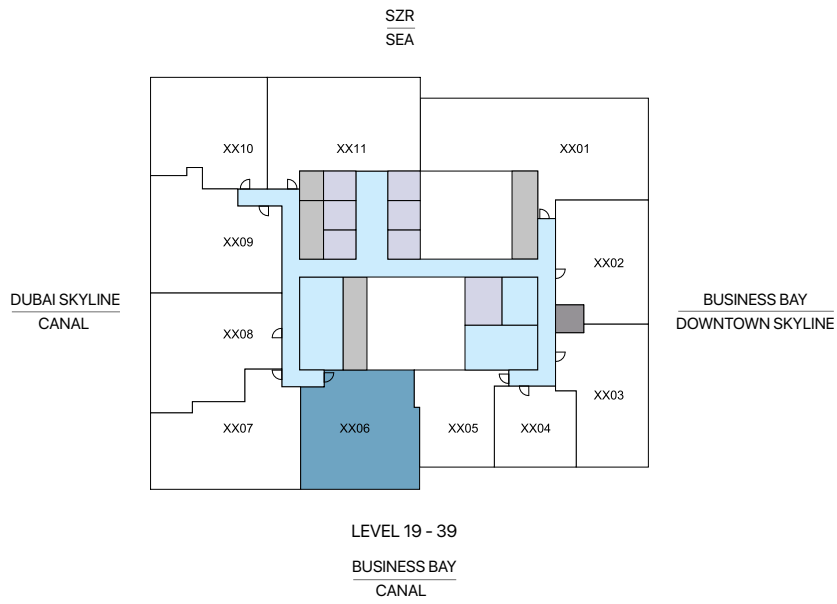
**TOTAL SALEABLE AREA**  
 SUITE = 562.20 SQ.FT.  
 BALCONY = 122.39 SQ.FT.  
 TOTAL = 684.59 SQ.FT.

List of unit numbers with this unit plan:

**VIEWS**

SZR, Dubai Skyline  
 4708, 4808, 4908, 5008, 5108, 5208, 5308, 5408,  
 5508, 5608, 5708, 5808, 5908, 6008, 6108, 6208,  
 6308, 6408, 6508, 6608, 6708, 6808, 6908





# 2

BEDROOM  
APARTMENT  
**TYPE A**  
(with powder room and  
maid room + balcony)

**TOTAL SALEABLE AREA**

SUITE RANGE = 1,361.20 - 1,364.33 SQ.FT.  
BALCONY RANGE = 145.42 - 145.85 SQ.FT.  
TOTAL RANGE = 1,506.62 - 1,509.75 SQ.FT.

List of unit numbers with this unit plan:

**VIEWS**

**Business Bay, Canal View**

1906, 2006, 2106, 2206, 2306, 2406, 2506, 2606, 2706, 2806, 2906, 3006, 3106,  
3206, 3306, 3406, 3506, 3606, 3706, 3806, 3906, 4706, 4806, 4906, 5006, 5106,  
5206, 5306, 5406, 5506, 5606, 5706, 5806, 5906, 6006, 6106, 6206, 6306, 6406,  
6506, 6606, 6706, 6806, 6906, 7704, 7804, 7904, 8004, 8104, 8204, 8304, 8404,  
8504, 8604, 8704, 8804, 8904, 9004, 9104, 9204





■ 2 BED UNIT



# 2

BEDROOM  
APARTMENT  
**TYPE A**  
(with powder room and  
maid room + balcony)

### TOTAL SALEABLE AREA

SUITE RANGE = 1,361.20 - 1,364.33 SQ.FT.  
BALCONY RANGE = 145.42 - 145.85 SQ.FT.  
TOTAL RANGE = 1,506.62 - 1,509.75 SQ.FT.

List of unit numbers with this unit plan:

### VIEWS

#### Business Bay, Canal View

1906, 2006, 2106, 2206, 2306, 2406, 2506, 2606, 2706, 2806, 2906, 3006, 3106,  
3206, 3306, 3406, 3506, 3606, 3706, 3806, 3906, 4706, 4806, 4906, 5006, 5106,  
5206, 5306, 5406, 5506, 5606, 5706, 5806, 5906, 6006, 6106, 6206, 6306, 6406,  
6506, 6606, 6706, 6806, 6906, 7704, 7804, 7904, 8004, 8104, 8204, 8304, 8404,  
8504, 8604, 8704, 8804, 8904, 9004, 9104, 9204





# 2

BEDROOM APARTMENT  
**TYPE A**  
 (with powder room and maid room + balcony)

**TOTAL SALEABLE AREA**  
 SUITE RANGE = 1,361.20 - 1,364.33 SQ.FT.  
 BALCONY RANGE = 145.42 - 145.85 SQ.FT.  
 TOTAL RANGE = 1,506.62 - 1,509.75 SQ.FT.

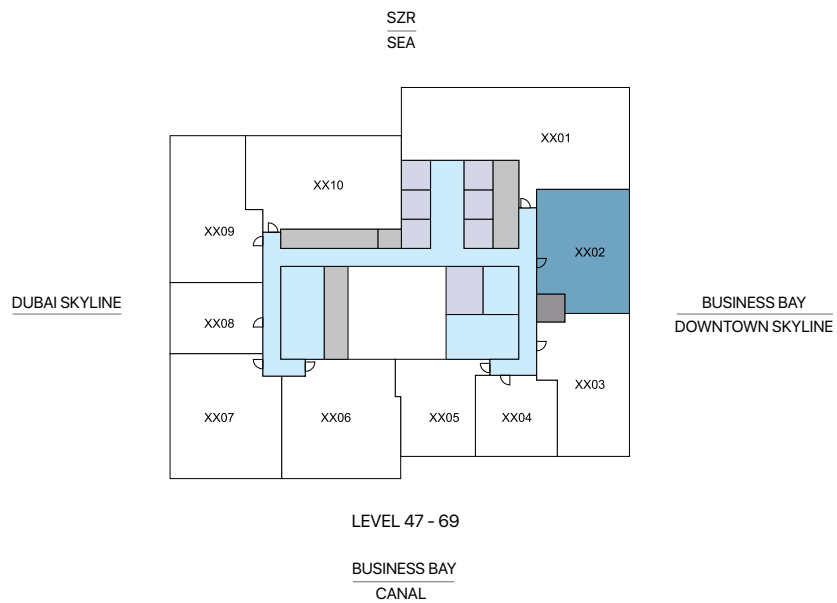
List of unit numbers with this unit plan:

**VIEWS**

- Business Bay, Canal View**  
 1906, 2006, 2106, 2206, 2306, 2406, 2506, 2606, 2706, 2806, 2906, 3006, 3106, 3206, 3306, 3406, 3506, 3606, 3706, 3806, 3906, 4706, 4806, 4906, 5006, 5106, 5206, 5306, 5406, 5506, 5606, 5706, 5806, 5906, 6006, 6106, 6206, 6306, 6406, 6506, 6606, 6706, 6806, 6906, 7704, 7804, 7904, 8004, 8104, 8204, 8304, 8404, 8504, 8604, 8704, 8804, 8904, 9004, 9104, 9204



DISCLAIMER: 1. ALL DIMENSIONS ARE IN METRIC, MEASURED TO WALL. 2. ALL DIMENSIONS & DRAWINGS ARE APPROXIMATE. 3. ACTUAL AREA MAY VARY FROM THE STATED AREA. 4. DRAWING ARE NOT TO SCALE. 5. LAYOUT REPRESENTATION AND IMAGES ARE FOR ILLUSTRATIVE PURPOSES ONLY AND MAY NOT REPRESENT THE ACTUAL SIZE, FEATURES, SPECIFICATIONS FOR KITCHEN FIXTURES, APPLIANCES, FITTINGS, FURNITURE OR FURNISHINGS AND FACADE. ACTUAL PRODUCTS AND DETAILS MAY VARY. 6. THE DEVELOPER RESERVES THE RIGHT TO MAKE REVISIONS/ALTERATIONS, AT ITS ABSOLUTE DISCRETION, WITHOUT PRIOR INTIMATION OR ANY LIABILITY WHATSOEVER.



# 2

BEDROOM  
APARTMENT  
**TYPE B**  
(with powder + balcony)

**TOTAL SALEABLE AREA**  
SUITE RANGE = 1,107.18 - 1,110.51 SQ.FT.  
BALCONY RANGE = 80.84 - 80.94 SQ.FT.  
TOTAL RANGE = 1,188.02 - 1,191.45 SQ.FT.

List of unit numbers with this unit plan:

### VIEWS

**SZR, Downtown Skyline**  
1902, 2002, 2102, 2202, 2302, 2402, 2502, 2602, 2702, 2802, 2902, 3002, 3102,  
3202, 3302, 3402, 3502, 3602, 3702, 3802, 3902, 4702, 4802, 4902, 5002, 5102,  
5202, 5302, 5402, 5502, 5602, 5702, 5802, 5902, 6002, 6102, 6202, 6302, 6402,  
6502, 6602, 6702, 6802, 6902





# 2

BEDROOM  
APARTMENT  
**TYPE B**  
(with powder + balcony)

**TOTAL SALEABLE AREA**

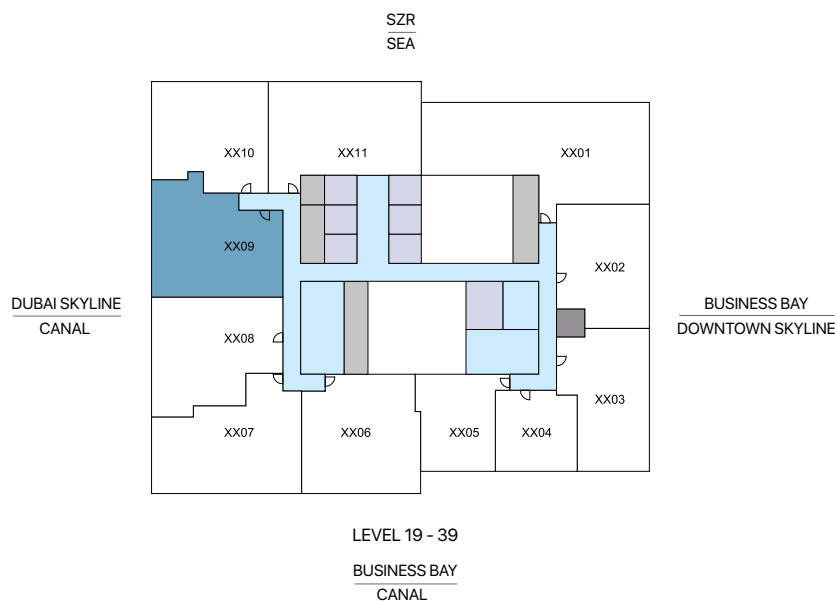
SUITE RANGE = 1,107.18 - 1,110.51 SQ.FT.  
BALCONY RANGE = 80.84 - 80.94 SQ.FT.  
TOTAL RANGE = 1,188.02 - 1,191.45 SQ.FT.

List of unit numbers with this unit plan:

**VIEWS**

SZR, Downtown Skyline  
1902, 2002, 2102, 2202, 2302, 2402, 2502, 2602, 2702, 2802, 2902, 3002, 3102,  
3202, 3302, 3402, 3502, 3602, 3702, 3802, 3902, 4702, 4802, 4902, 5002, 5102,  
5202, 5302, 5402, 5502, 5602, 5702, 5802, 5902, 6002, 6102, 6202, 6302, 6402,  
6502, 6602, 6702, 6802, 6902





# 2

BEDROOM  
APARTMENT  
**TYPE C**  
(with powder room and  
maid room + balcony)

**TOTAL SALEABLE AREA**  
SUITE = 1,418.36 SQ.FT.  
BALCONY = 60.71 SQ.FT.  
TOTAL = 1,479.07 SQ.FT.

List of unit numbers with this unit plan:

### VIEWS

SZR, Dubai Skyline, Canal View  
1909, 2009, 2109, 2209, 2309, 2409, 2509, 2609, 2709, 2809, 2909, 3009, 3109,  
3209, 3309, 3409, 3509, 3609, 3709, 3809, 3909





■ 2 BED UNIT 

# 2

BEDROOM APARTMENT  
**TYPE C**  
 (with powder room and maid room + balcony)

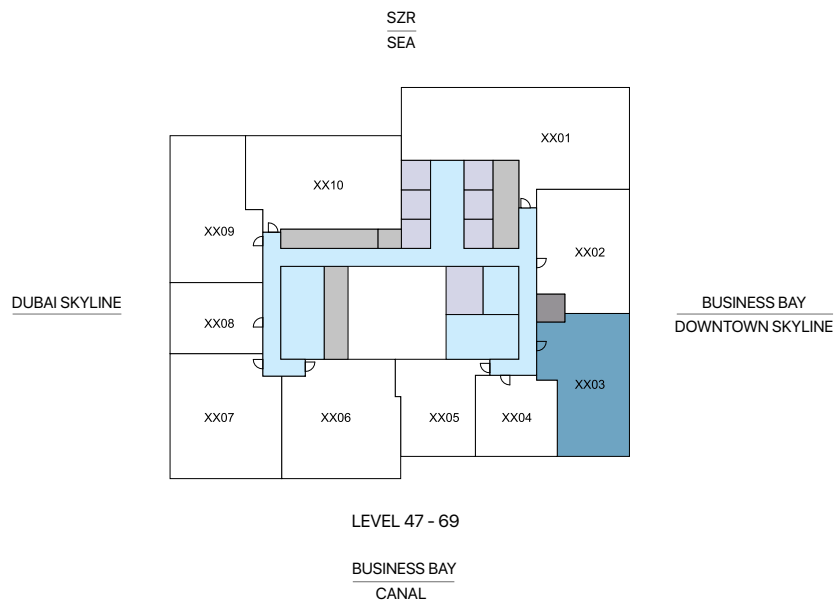
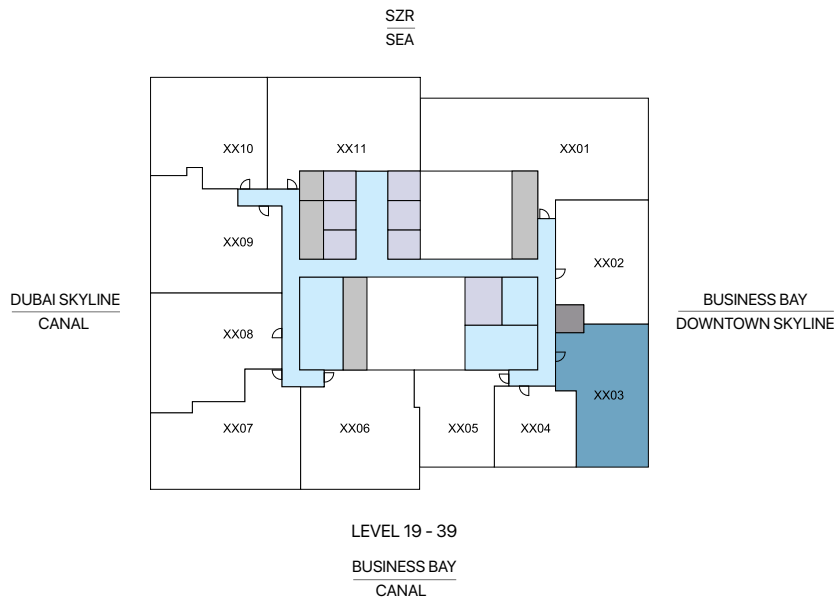
**TOTAL SALEABLE AREA**  
 SUITE = 1,418.36 SQ.FT.  
 BALCONY = 60.71 SQ.FT.  
 TOTAL = 1,479.07 SQ.FT.

List of unit numbers with this unit plan:

**VIEWS**

SZR, Dubai Skyline, Canal View  
 1909, 2009, 2109, 2209, 2309, 2409, 2509, 2609, 2709, 2809, 2909, 3009, 3109,  
 3209, 3309, 3409, 3509, 3609, 3709, 3809, 3909





■ 2 BED UNIT



# 2

BEDROOM  
APARTMENT  
**TYPE D**  
(with powder + balcony)

**TOTAL SALEABLE AREA**

SUITE RANGE = 1,157.01 - 1,157.23 SQ.FT.  
BALCONY RANGE = 72.12 - 72.23 SQ.FT.  
TOTAL RANGE = 1,229.13 - 1,229.46 SQ.FT.

List of unit numbers with this unit plan:

**VIEWS**

SZR, Downtown Skyline, Business Bay, Canal View  
1903, 2003, 2103, 2203, 2303, 2403, 2503, 2603, 2703, 2803, 2903, 3003, 3103,  
3203, 3303, 3403, 3503, 3603, 3703, 3803, 3903, 4703, 4803, 4903, 5003, 5103,  
5203, 5303, 5403, 5503, 5603, 5703, 5803, 5903, 6003, 6103, 6203, 6303, 6403,  
6503, 6603, 6703, 6803, 6903





# 2

BEDROOM  
APARTMENT  
**TYPE D**  
(with powder + balcony)

**TOTAL SALEABLE AREA**  
 SUITE RANGE = 1,157.01 - 1,157.23 SQ.FT.  
 BALCONY RANGE = 72.12 - 72.23 SQ.FT.  
 TOTAL RANGE = 1,229.13 - 1,229.46 SQ.FT.

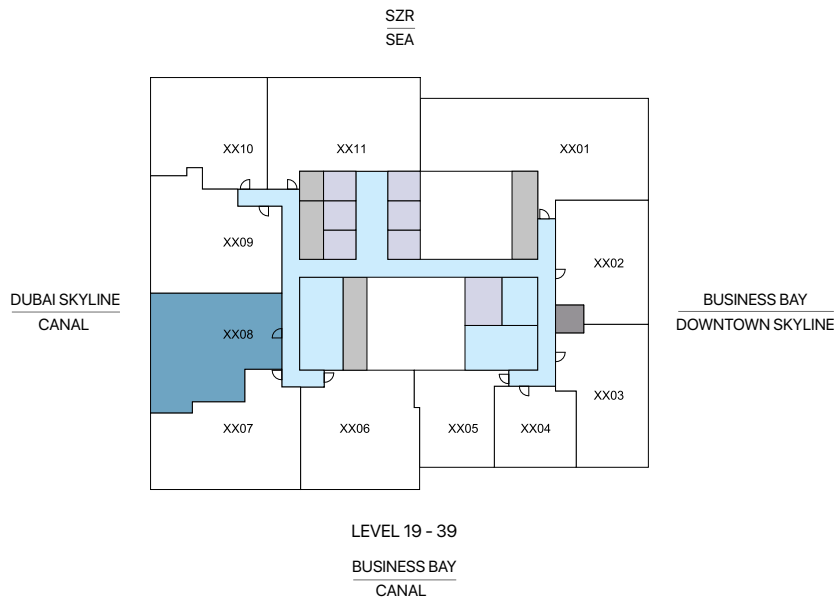
List of unit numbers with this unit plan:

**VIEWS**

SZR, Downtown Skyline, Business Bay, Canal View  
 1903, 2003, 2103, 2203, 2303, 2403, 2503, 2603, 2703, 2803, 2903, 3003, 3103,  
 3203, 3303, 3403, 3503, 3603, 3703, 3803, 3903, 4703, 4803, 4903, 5003, 5103,  
 5203, 5303, 5403, 5503, 5603, 5703, 5803, 5903, 6003, 6103, 6203, 6303, 6403,  
 6503, 6603, 6703, 6803, 6903



DISCLAIMER: 1. ALL DIMENSIONS ARE IN METRIC, MEASURED TO WALL. 2. ALL DIMENSIONS & DRAWINGS ARE APPROXIMATE. 3. ACTUAL AREA MAY VARY FROM THE STATED AREA. 4. DRAWING ARE NOT TO SCALE. 5. LAYOUT REPRESENTATION AND IMAGES ARE FOR ILLUSTRATIVE PURPOSES ONLY AND MAY NOT REPRESENT THE ACTUAL SIZE, FEATURES, SPECIFICATIONS FOR KITCHEN FIXTURES, APPLIANCES, FITTINGS, FURNITURE OR FURNISHINGS AND FACADE. ACTUAL PRODUCTS AND DETAILS MAY VARY. 6. THE DEVELOPER RESERVES THE RIGHT TO MAKE REVISIONS/ALTERATIONS, AT ITS ABSOLUTE DISCRETION, WITHOUT PRIOR INTIMATION OR ANY LIABILITY WHATSOEVER.



■ 2 BED UNIT



# 2

BEDROOM  
APARTMENT  
**TYPE E**  
(with powder room and  
maid room + balcony)

**TOTAL SALEABLE AREA**  
SUITE = 1,324.71 SQ.FT.  
BALCONY = 139.93 SQ.FT.  
TOTAL = 1,464.64 SQ.FT.

List of unit numbers with this unit plan:

### VIEWS

SZR, Dubai Skyline, Canal View  
1908, 2008, 2108, 2208, 2308, 2408, 2508, 2608, 2708, 2808, 2908, 3008, 3108,  
3208, 3308, 3408, 3508, 3608, 3708, 3808, 3908





■ 2 BED UNIT

# 2

BEDROOM APARTMENT  
**TYPE E**  
 (with powder room and maid room + balcony)

**TOTAL SALEABLE AREA**  
 SUITE = 1,324.71 SQ.FT.  
 BALCONY = 139.93 SQ.FT.  
 TOTAL = 1,464.64 SQ.FT.

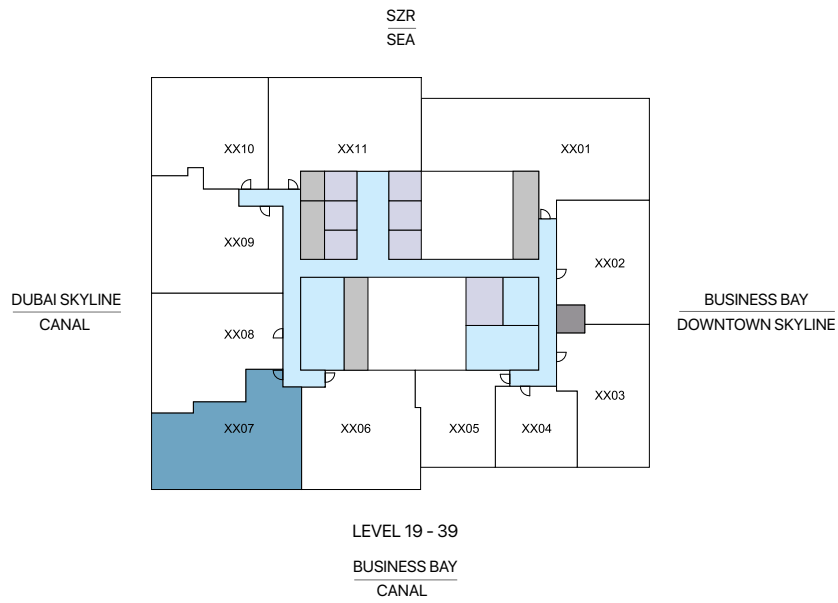
List of unit numbers with this unit plan:

**VIEWS**

SZR, Dubai Skyline, Canal View  
 1908, 2008, 2108, 2208, 2308, 2408, 2508, 2608, 2708, 2808, 2908, 3008, 3108,  
 3208, 3308, 3408, 3508, 3608, 3708, 3808, 3908



DISCLAIMER: 1. ALL DIMENSIONS ARE IN METRIC, MEASURED TO WALL. 2. ALL DIMENSIONS & DRAWINGS ARE APPROXIMATE. 3. ACTUAL AREA MAY VARY FROM THE STATED AREA. 4. DRAWING ARE NOT TO SCALE. 5. LAYOUT REPRESENTATION AND IMAGES ARE FOR ILLUSTRATIVE PURPOSES ONLY AND MAY NOT REPRESENT THE ACTUAL SIZE, FEATURES, SPECIFICATIONS FOR KITCHEN FIXTURES, APPLIANCES, FITTINGS, FURNITURE OR FURNISHINGS AND FACADE. ACTUAL PRODUCTS AND DETAILS MAY VARY. 6. THE DEVELOPER RESERVES THE RIGHT TO MAKE REVISIONS/ALTERATIONS, AT ITS ABSOLUTE DISCRETION, WITHOUT PRIOR INTIMATION OR ANY LIABILITY WHATSOEVER.



# 2

BEDROOM  
APARTMENT  
**TYPE F**  
(with powder room and  
maid room + balcony)

**TOTAL SALEABLE AREA**  
SUITE = 1,352.49 SQ.FT.  
BALCONY = 145.96 SQ.FT.  
TOTAL = 1,498.45 SQ.FT.

List of unit numbers with this unit plan:

### VIEWS

**Business Bay, Canal View, Dubai Skyline**  
1907, 2007, 2107, 2207, 2307, 2407, 2507, 2607, 2707, 2807, 2907, 3007, 3107,  
3207, 3307, 3407, 3507, 3607, 3707, 3807, 3907





2 BED UNIT



# 2

**BEDROOM APARTMENT**  
**TYPE F**  
(with powder room and maid room + balcony)

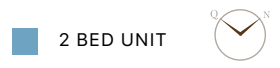
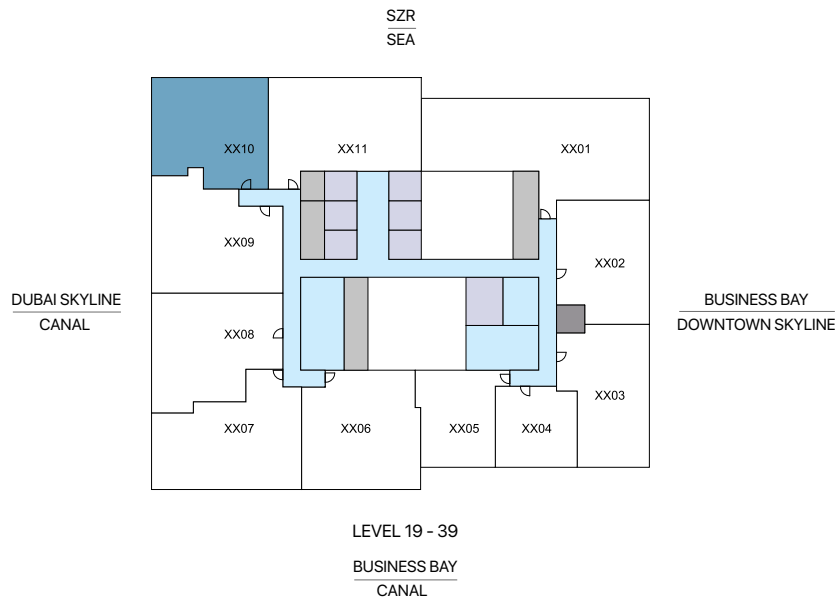
**TOTAL SALEABLE AREA**  
SUITE = 1,352.49 SQ.FT.  
BALCONY = 145.96 SQ.FT.  
TOTAL = 1,498.45 SQ.FT.

List of unit numbers with this unit plan:

### VIEWS

Business Bay, Canal View, Dubai Skyline  
1907, 2007, 2107, 2207, 2307, 2407, 2507, 2607, 2707, 2807, 2907, 3007, 3107,  
3207, 3307, 3407, 3507, 3607, 3707, 3807, 3907

SOBHA  SKYPARKS



# 2

BEDROOM  
APARTMENT  
**TYPE G**  
(with powder + balcony)

**TOTAL SALEABLE AREA**  
SUITE = 1,242.37 SQ.FT.  
BALCONY = 106.89 SQ.FT.  
TOTAL = 1,349.26 SQ.FT.

List of unit numbers with this unit plan:

### VIEWS

Sea View, SZR, Dubai Skyline, Canal View  
1910, 2010, 2110, 2210, 2310, 2410, 2510, 2610, 2710, 2810, 2910, 3010, 3110, 3210,  
3310, 3410, 3510, 3610, 3710, 3810, 3910





2 BED UNIT



# 2

BEDROOM  
APARTMENT  
**TYPE G**  
(with powder + balcony)

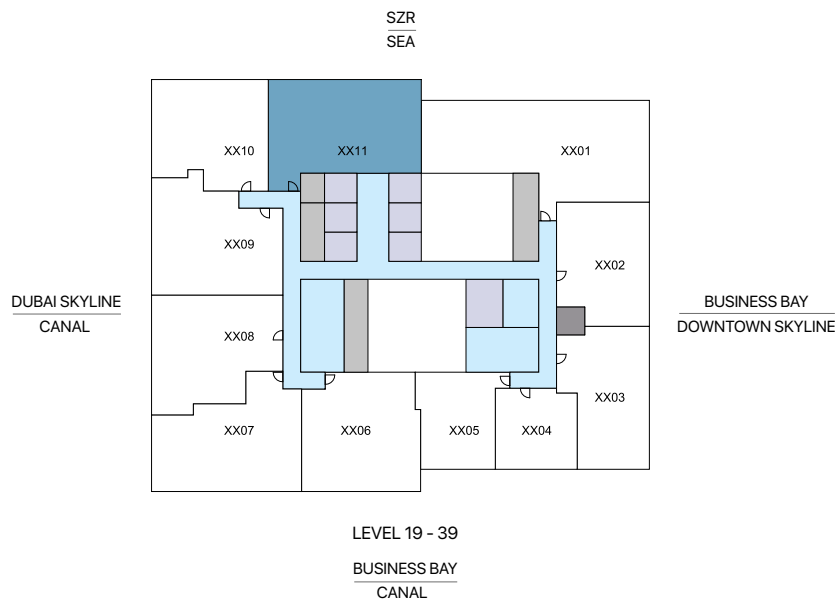
**TOTAL SALEABLE AREA**  
SUITE = 1,242.37 SQ.FT.  
BALCONY = 106.89 SQ.FT.  
TOTAL = 1,349.26 SQ.FT.

List of unit numbers with this unit plan:

### VIEWS

Sea View, SZR, Dubai Skyline, Canal View  
1910, 2010, 2110, 2210, 2310, 2410, 2510, 2610, 2710, 2810, 2910, 3010, 3110, 3210,  
3310, 3410, 3510, 3610, 3710, 3810, 3910





# 2

BEDROOM APARTMENT  
**TYPE H**  
 (with powder room and maid room + balcony)

**TOTAL SALEABLE AREA**  
 SUITE = 1,438.27 SQ.FT.  
 BALCONY = 167.38 SQ.FT.  
 TOTAL = 1,605.65 SQ.FT.

List of unit numbers with this unit plan:

### VIEWS

Sea View, SZR  
 1911, 2011, 2111, 2211, 2311, 2411, 2511, 2611, 2711, 2811, 2911, 3011, 3111, 3211, 3311, 3411, 3511, 3611, 3711, 3811, 3911





■ 2 BED UNIT



# 2

BEDROOM  
APARTMENT  
**TYPE H**  
(with powder room and  
maid room + balcony)

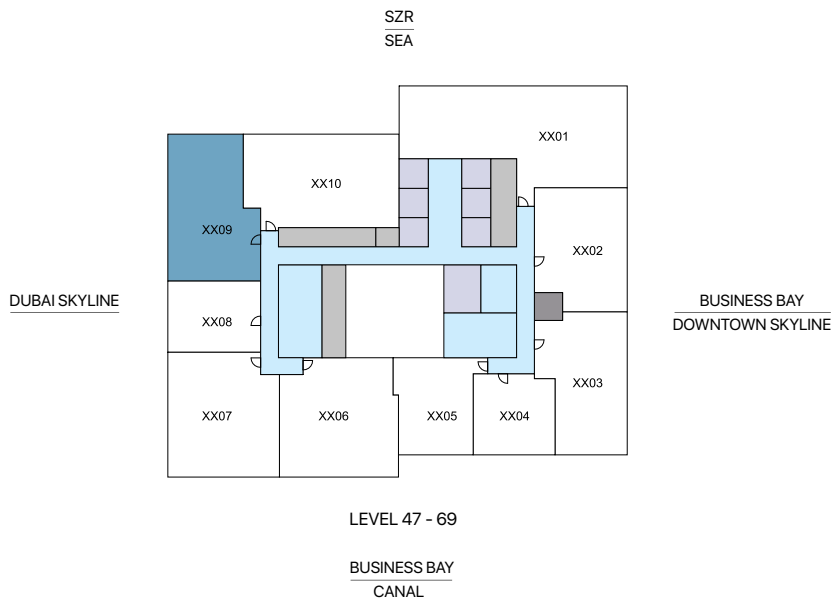
**TOTAL SALEABLE AREA**  
SUITE = 1,438.27 SQ.FT.  
BALCONY = 167.38 SQ.FT.  
TOTAL = 1,605.65 SQ.FT.

List of unit numbers with this unit plan:

### VIEWS

Sea View, SZR  
1911, 2011, 2111, 2211, 2311, 2411, 2511, 2611, 2711, 2811, 2911, 3011, 3111, 3211, 3311, 3411,  
3511, 3611, 3711, 3811, 3911





# 2

BEDROOM  
APARTMENT  
**TYPE I**  
(with powder + balcony)

**TOTAL SALEABLE AREA**  
SUITE = 1,104.38 SQ.FT.  
BALCONY = 151.88 SQ.FT.  
TOTAL = 1,256.26 SQ.FT.

List of unit numbers with this unit plan:

### VIEWS

Sea View, SZR, Dubai Skyline, Canal View  
4709, 4809, 4909, 5009, 5109, 5209, 5309, 5409, 5509, 5609, 5709, 5809, 5909,  
6009, 6109, 6209, 6309, 6409, 6509, 6609, 6709, 6809, 6909





■ 2 BED UNIT

# 2

BEDROOM  
APARTMENT  
**TYPE I**  
(with powder + balcony)

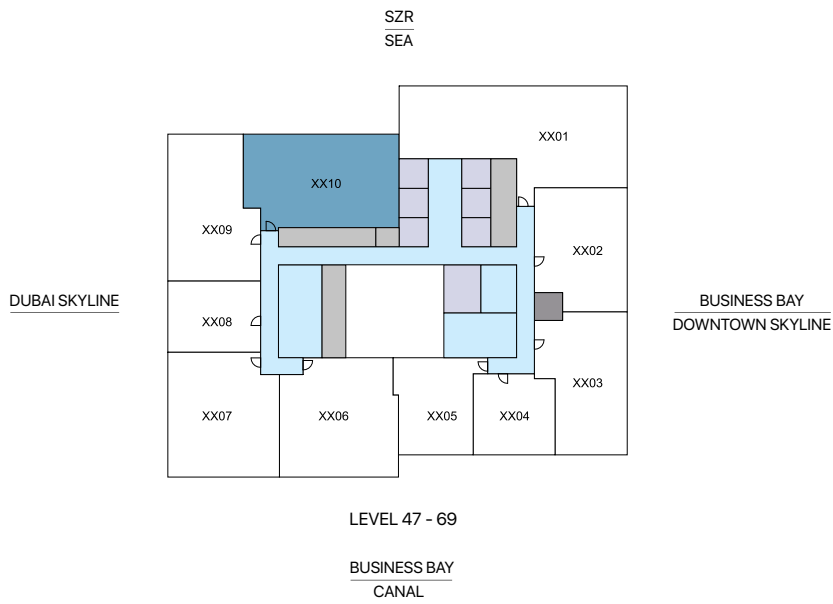
**TOTAL SALEABLE AREA**  
SUITE = 1,104.38 SQ.FT.  
BALCONY = 151.88 SQ.FT.  
TOTAL = 1,256.26 SQ.FT.

List of unit numbers with this unit plan:

### VIEWS

Sea View, SZR, Dubai Skyline, Canal View  
4709, 4809, 4909, 5009, 5109, 5209, 5309, 5409, 5509, 5609, 5709, 5809, 5909,  
6009, 6109, 6209, 6309, 6409, 6509, 6609, 6709, 6809, 6909





# 2

BEDROOM  
APARTMENT

**TYPE J**  
(with powder room and  
maid room + balcony)

**TOTAL SALEABLE AREA**  
SUITE = 1,407.60 SQ.FT.  
BALCONY = 174.70 SQ.FT.  
TOTAL = 1,582.30 SQ.FT.

List of unit numbers with this unit plan:

### VIEWS

Sea View, SZR  
4710, 4810, 4910, 5010, 5110, 5210, 5310, 5410, 5510, 5610, 5710, 5810, 5910, 6010,  
6110, 6210, 6310, 6410, 6510, 6610, 6710, 6810, 6910





2 BED UNIT



# 2

BEDROOM  
APARTMENT

## TYPE J

(with powder room and  
maid room + balcony)

### TOTAL SALEABLE AREA

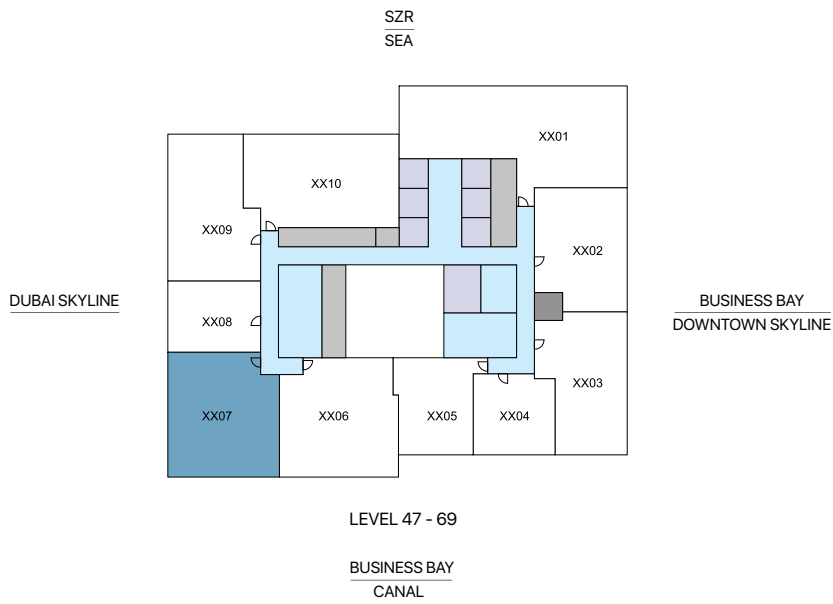
SUITE = 1,407.60 SQ.FT.  
BALCONY = 174.70 SQ.FT.  
TOTAL = 1,582.30 SQ.FT.

List of unit numbers with this unit plan:

### VIEWS

Sea View, SZR  
4710, 4810, 4910, 5010, 5110, 5210, 5310, 5410, 5510, 5610, 5710, 5810, 5910, 6010,  
6110, 6210, 6310, 6410, 6510, 6610, 6710, 6810, 6910





# 2

BEDROOM  
APARTMENT

**TYPE K**  
(with study/store room  
+ balcony)

**TOTAL SALEABLE AREA**  
SUITE = 1,314.27 SQ.FT.  
BALCONY = 145.42 SQ.FT.  
TOTAL = 1,459.69 SQ.FT.

List of unit numbers with this unit plan:

### VIEWS

Business Bay, Canal View, Dubai Skyline  
4707, 4807, 4907, 5007, 5107, 5207, 5307, 5407, 5507, 5607, 5707, 5807, 5907,  
6007, 6107, 6207, 6307, 6407, 6507, 6607, 6707, 6807, 6907





# 2

BEDROOM  
APARTMENT

**TYPE K**  
(with study/store room  
+ balcony)

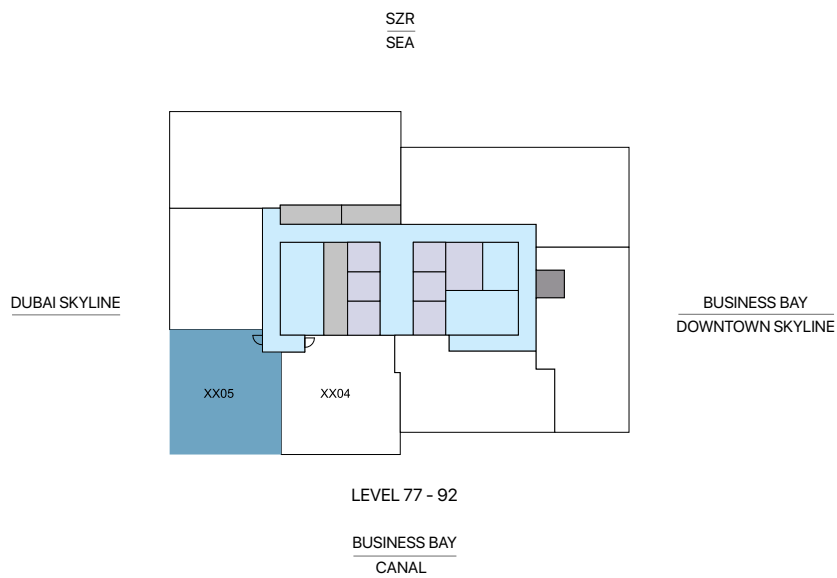
**TOTAL SALEABLE AREA**  
SUITE = 1,314.27 SQ.FT.  
BALCONY = 145.42 SQ.FT.  
TOTAL = 1,459.69 SQ.FT.

List of unit numbers with this unit plan:

### VIEWS

Business Bay, Canal View, Dubai Skyline  
4707, 4807, 4907, 5007, 5107, 5207, 5307, 5407, 5507, 5607, 5707, 5807, 5907,  
6007, 6107, 6207, 6307, 6407, 6507, 6607, 6707, 6807, 6907





# 2

BEDROOM APARTMENT  
**TYPE L**  
 (with powder room and maid room + balcony)

**TOTAL SALEABLE AREA**  
 SUITE = 1,314.38 SQ.FT.  
 BALCONY = 145.85 SQ.FT.  
 TOTAL = 1,460.23 SQ.FT.

List of unit numbers with this unit plan:

### VIEWS

Business Bay, Canal View, Dubai Skyline  
 7705, 7805, 7905, 8005, 8105, 8205, 8305, 8405, 8505, 8605, 8705, 8805, 8905,  
 9005, 9105, 9205





■ 2 BED UNIT

# 2

BEDROOM  
APARTMENT  
**TYPE L**  
(with powder room and  
maid room + balcony)

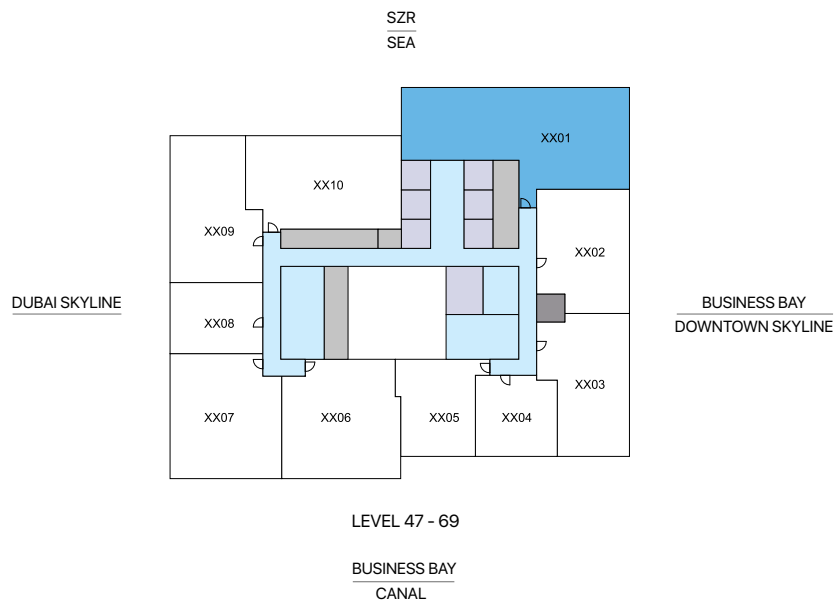
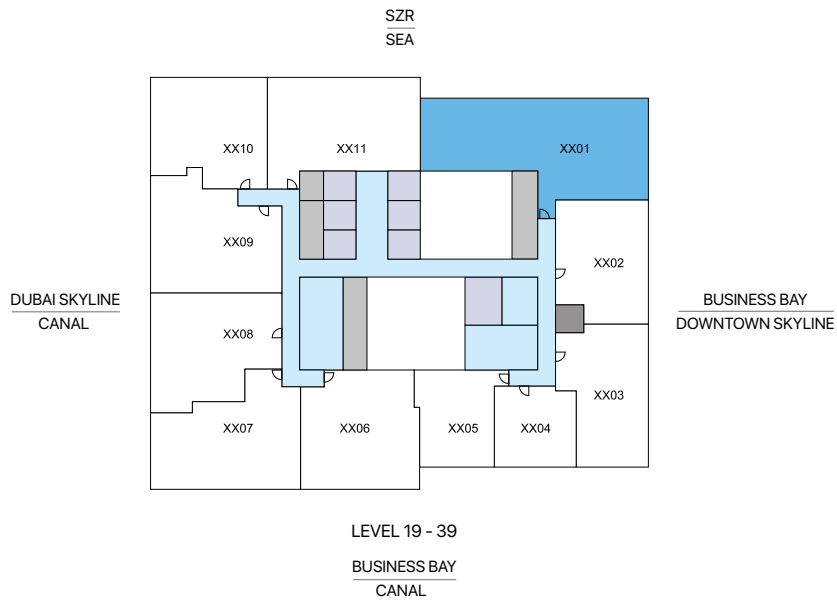
**TOTAL SALEABLE AREA**  
SUITE = 1,314.38 SQ.FT.  
BALCONY = 145.85 SQ.FT.  
TOTAL = 1,460.23 SQ.FT.

List of unit numbers with this unit plan:

### VIEWS

Business Bay, Canal View, Dubai Skyline  
7705, 7805, 7905, 8005, 8105, 8205, 8305, 8405, 8505, 8605, 8705, 8805, 8905,  
9005, 9105, 9205





# 3

**BEDROOM APARTMENT**  
**TYPE A**  
(with powder room and maid room + balcony)

**TOTAL SALEABLE AREA**

SUITE RANGE = 1,993.05 - 1,997.35 SQ.FT.  
BALCONY RANGE = 274.16 - 274.37 SQ.FT.  
TOTAL RANGE = 2,267.21 - 2,271.72 SQ.FT.

List of unit numbers with this unit plan:

**VIEWS**

Sea View, SZR, Downtown Skyline  
1901, 2001, 2101, 2201, 2301, 2401, 2501, 2601, 2701, 2801, 2901, 3001, 3101, 3201, 3301, 3401, 3501, 3601, 3701, 3801, 3901, 4701, 4801, 4901, 5001, 5101, 5201, 5301, 5401, 5501, 5601, 5701, 5801, 5901, 6001, 6101, 6201, 6301, 6401, 6501, 6601, 6701, 6801, 6901





3 BED UNIT



# 3

BEDROOM  
APARTMENT  
**TYPE A**  
(with powder room and  
maid room + balcony)

**TOTAL SALEABLE AREA**

SUITE RANGE = 1,993.05 - 1,997.35 SQ.FT.

BALCONY RANGE = 274.16 - 274.37 SQ.FT.

TOTAL RANGE = 2,267.21 - 2,271.72 SQ.FT.

List of unit numbers with this unit plan:

**VIEWS**

Sea View, SZR, Downtown Skyline

1901, 2001, 2101, 2201, 2301, 2401, 2501, 2601, 2701, 2801, 2901, 3001, 3101, 3201,  
3301, 3401, 3501, 3601, 3701, 3801, 3901, 4701, 4801, 4901, 5001, 5101, 5201, 5301,  
5401, 5501, 5601, 5701, 5801, 5901, 6001, 6101, 6201, 6301, 6401, 6501, 6601, 6701,  
6801, 6901





ACD : DECEMBER 2031



Disclaimer: All renders and images are for illustrative purposes only and may not represent the final product.  
Designs, finishes, and specifications are subject to change