

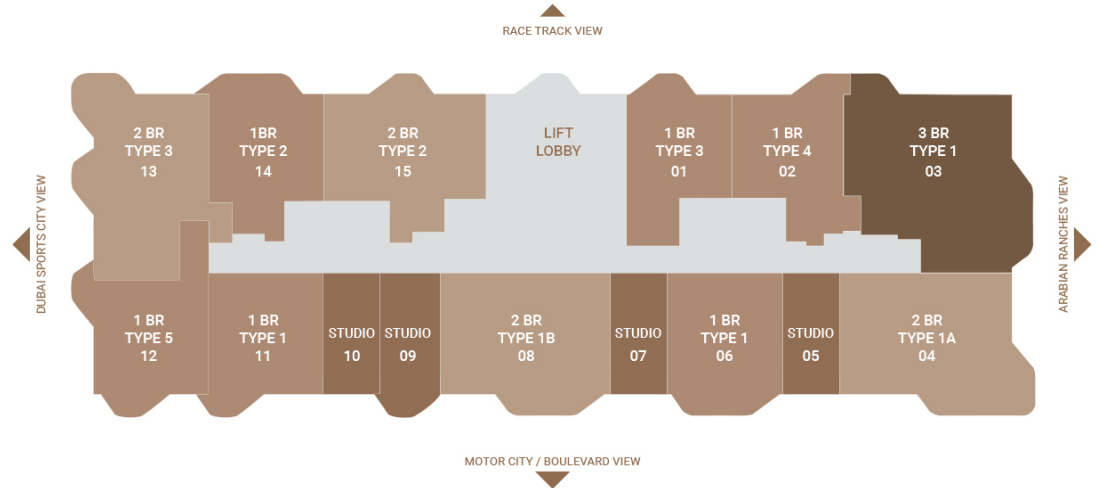
Takaya Symphony at Motor City

Typical Floor Plans

SYMPHONY

Level - 03, 05, 07, 09, 11, 13, 15, 17

UNIT	COUNT
Studio	4 Units
1 Bedroom	6 Units
2 Bedroom	4 Units
3 Bedroom	1 Unit
TOTAL	15 Units

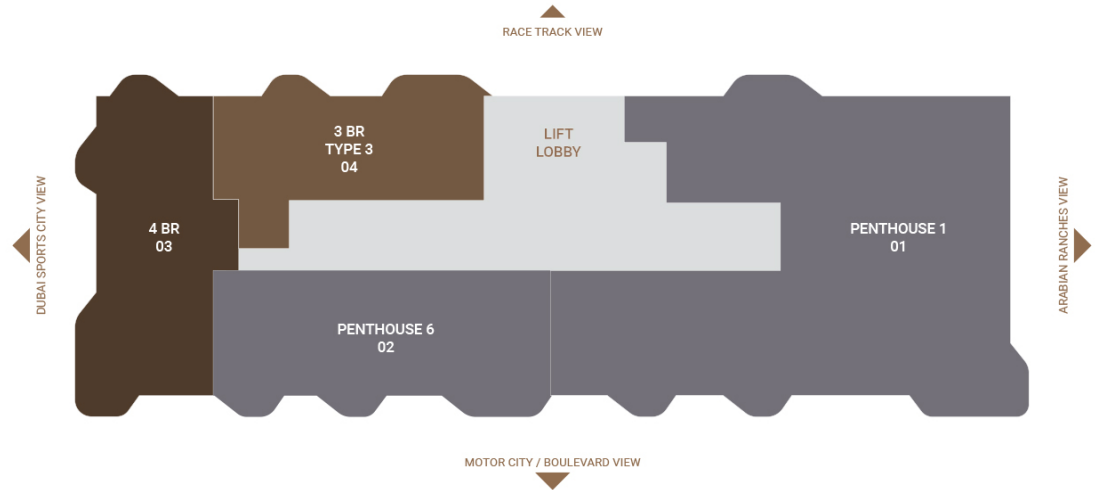


Typical Floor Plans

SYMPHONY

Level - 18

UNIT	COUNT
3 Bedroom	1 Unit
4 Bedroom	1 Unit
Penthouse	2 Units
TOTAL	4 Units

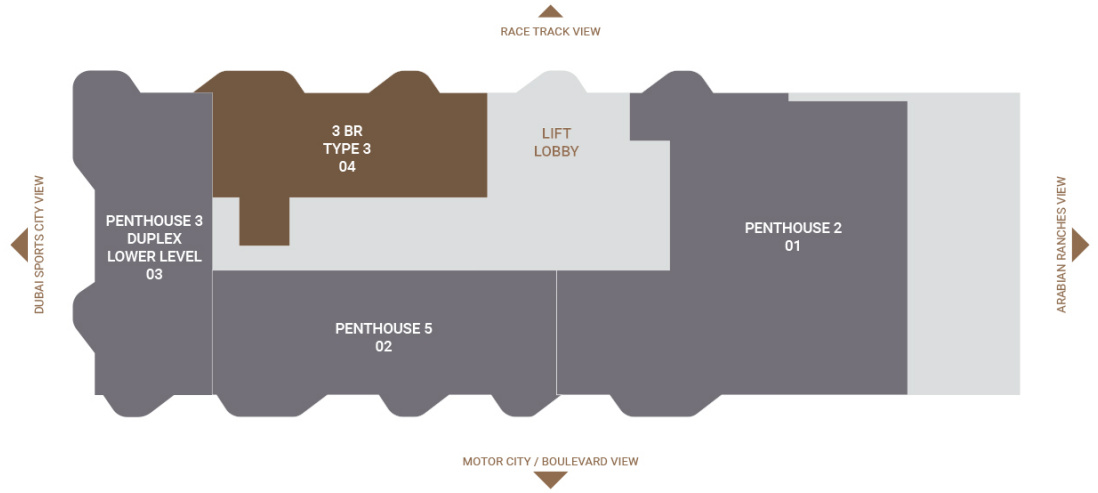


Typical Floor Plans

SYMPHONY

Level - 19

UNIT	COUNT
3 Bedroom	1 Unit
Penthouse	2 Units
Penthouse Duplex	1 Unit
TOTAL	4 Units

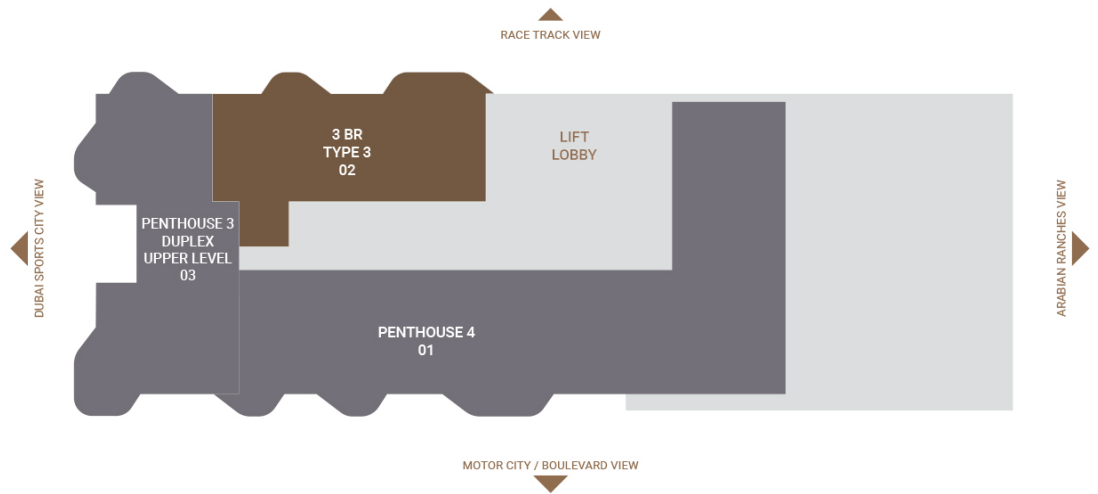


Typical Floor Plans

SYMPHONY

Level - 20

UNIT	COUNT
3 Bedroom	1 Unit
Penthouse	1 Unit
TOTAL	2 Units

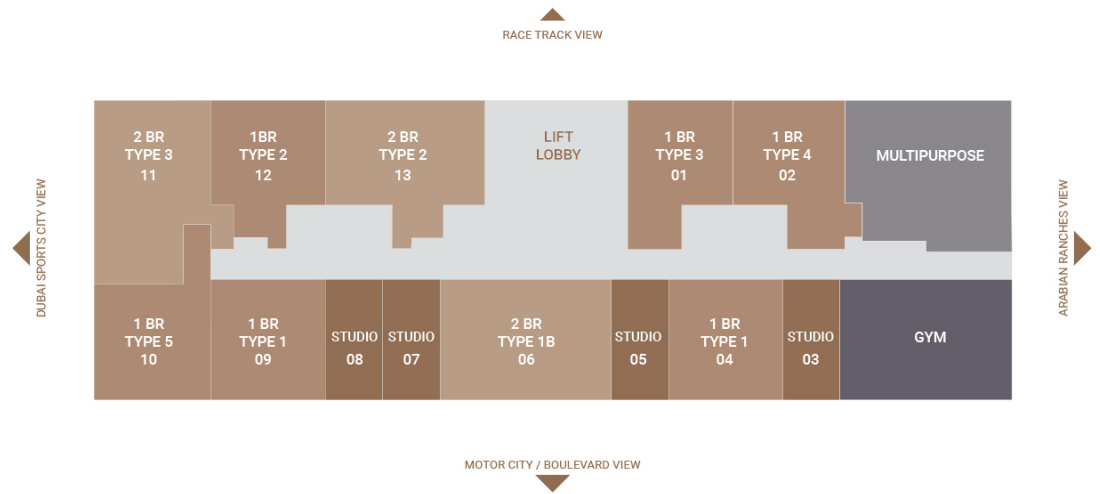


Typical Floor Plans

SYMPHONY

Level - 02

UNIT	COUNT
Studio	4 Units
1 Bedroom	6 Units
2 Bedroom	3 Units
TOTAL	13 Units

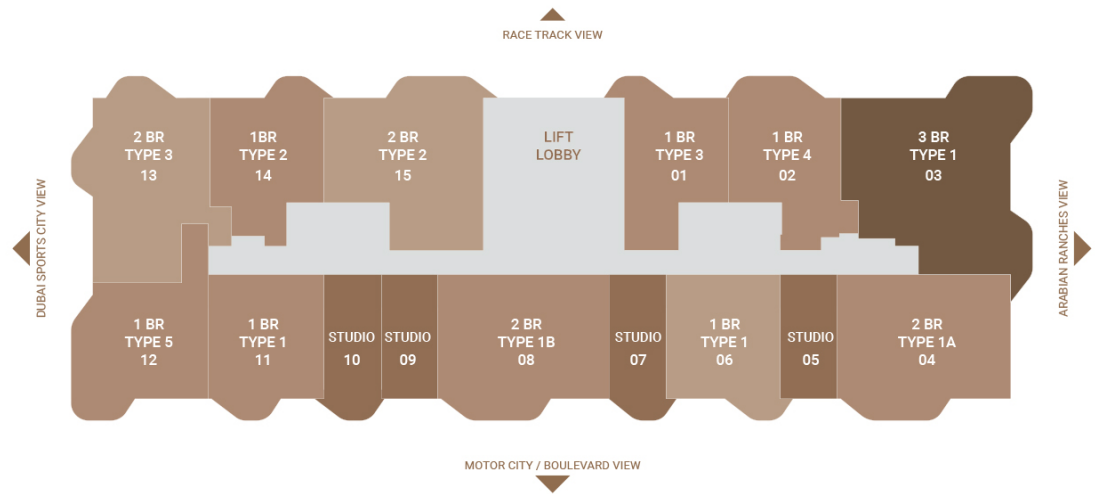


Typical Floor Plans

SYMPHONY

Level - 04, 06, 08, 10, 12, 14, 16

UNIT	COUNT
Studio	4 Units
1 Bedroom	6 Units
2 Bedroom	4 Units
3 Bedroom	1 Unit
TOTAL	15 Units

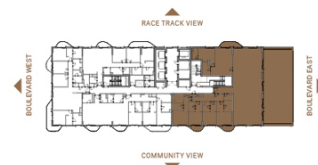




TYPE 1

Unit Area	4,578.42 sq.ft
Balcony Area	2,136.42 sq.ft
Total Area	6,714.84 sq.ft

Keyplan - Level 18

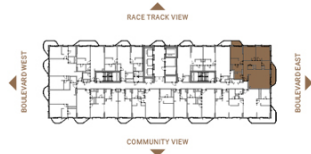


All images used are for illustrative purposes only and do not represent the actual site, features, specifications, fittings and furnishings. The developer reserves the right to make revisions / alterations at its absolute discretion, without any liability whatsoever.

3 Bedroom Apartment - Type - 1

Unit Area	1,521.15 sq.ft
Balcony Area	162.10 sq.ft
Total Area	1,683.25 sq.ft

Keyplan Level 3 (Typ. Odd Levels upto L17)



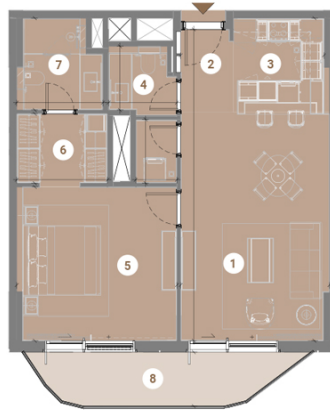
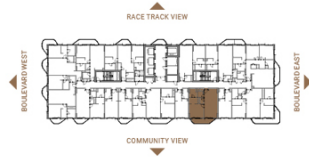
- 1 Living/Dining 5.75m x 3.90m
- 2 Entry 1.95m x 1.40m
- 3 Kitchen 4.15m x 2.62m
- 4 Powder Room 2.10m x 2.45m
- 5 Laundry/Store 1.08m x 1.50m
- 6 M.Bedroom 4.23m x 4.25m
- 7 WIC 2.53m x 1.80m
- 8 M.Bath 2.53m x 2.50m
- 9 Bedroom 01 3.55m x 3.83m
- 10 Common Bath 2.13m x 3.05m
- 11 WIC 01 1.93m x 2.45m
- 12 Bedroom 02 4.23 x 3.78
- 13 Hallway 1.35m x 4.00m
- 14 Balcony 1.45m
- 15 Balcony 1.45m



1 Bedroom Apartment - Type - 1

Unit Area	788.73 sq.ft
Balcony Area	110.65 sq.ft
Total Area	899.38 sq.ft

Keyplan Level 3 (Typ. Odd Levels upto L17)



- 1 Living/Dining 6.05m x 3.98m
- 2 Entry 2.25m x 1.30m
- 3 Kitchen 2.57m x 2.58m
- 4 Powder Room 1.70m x 1.83m
- 5 M.Bedroom 4.10m x 4.28m
- 6 WIC 1.85m x 2.43m
- 7 M.Bath 2.45m x 2.30m
- 8 Balcony 1.45m



Studio Apartment - Type - 1

Unit Area	378.98 sq.ft
Balcony Area	136.64 sq.ft
Total Area	515.62 sq.ft

Keyplan Level 2



- 1 Bed Space 4.95m x 3.93m
- 2 Kitchenette 3.35m x 1.80m
- 3 Bath 2.90m x 1.98m
- 4 Terrace 2.90m x 4.38m

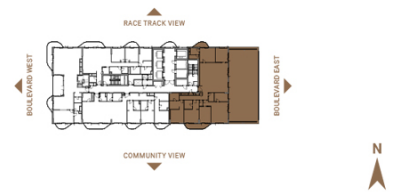




TYPE 2

Unit Area	2,972.88 sq.ft
Balcony Area	2,108.22 sq.ft
Total Area	5,081.10 sq.ft

Keyplan - Level 19



All images used are for illustrative purposes only and do not represent the actual size, features, specifications, fittings and furnishings. The developer reserves the right to make revisions / alterations at its absolute discretion, without any liability whatsoever.

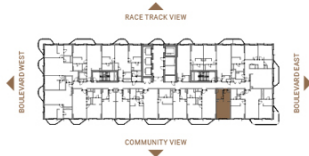
Studio Apartment - Type - 2

Unit Area	378.98 sq.ft
Total Area	378.98 sq.ft



- 1 Bed Space 4.95m x 3.93m
- 2 Kitchenette 3.35m x 1.85m
- 3 Bath 2.90m x 1.98m

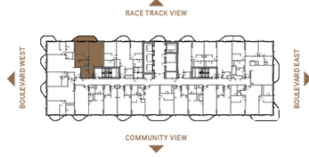
Keyplan Level 3 (Typ. Odd Levels upto L17)



1 Bedroom Apartment - Type - 2

Unit Area	814.83 sq.ft
Balcony Area	110.65 sq.ft
Total Area	925.48 sq.ft

Keyplan Level 3 (Typ. Odd Levels upto L17)



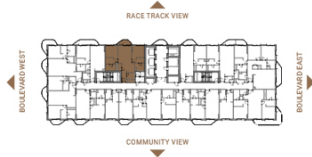
- 1 Living/Dining 4.69m x 4.25m
- 2 Entry 3.60m x 1.30m
- 3 Kitchen 2.70m x 2.95m
- 4 Laundry/Store 1.75m x 1.20m
- 5 Powder Room 1.75m x 2.10m
- 6 M.Bedroom 3.60m x 3.95m
- 7 WIC 1.80m x 2.65m
- 8 M.Bath 2.00m x 2.45m
- 9 Balcony 1.45m



2 Bedroom Apartment - Type - 2

Unit Area	1,094.58 sq.ft
Balcony Area	59.20 sq.ft
Total Area	1,153.78 sq.ft

Keyplan Level 3 (Typ. Odd Levels upto L17)



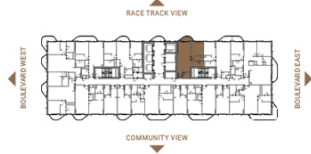
- 1 Living/Dining 5.20m x 3.95m
- 2 Entry 3.05m x 1.30m
- 3 Kitchen 2.75m x 2.40m
- 4 Laundry/Store 1.10m x 1.00m
- 5 Powder Room 1.70m x 2.30m
- 6 M.Bedroom 3.45m x 3.70m
- 7 WIC 1.80m x 2.45m
- 8 M.Bath 1.95m x 3.03m
- 9 Bedroom 01 3.45m x 3.65m
- 10 WIC 01 1.55m x 2.38m
- 11 Bath 01 2.20m x 2.75m
- 12 Balcony 1.45m



1 Bedroom Apartment - Type - 3

Unit Area	796.53 sq.ft
Balcony Area	59.20 sq.ft
Total Area	855.73 sq.ft

Keyplan Level 3 (Typ. Odd Levels upto L17)



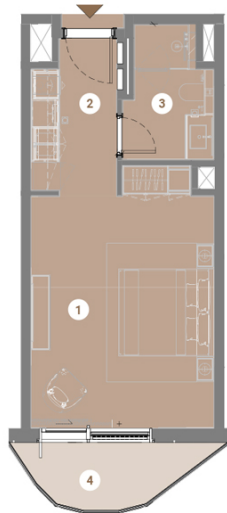
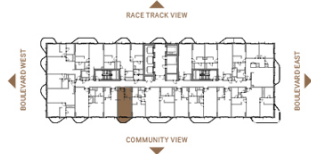
- 1 Living/Dining 6.13m x 4.00m
- 2 Entry 2.15m x 1.40m
- 3 Kitchen 2.70m x 2.40m
- 4 Powder Room 1.75m x 1.85m
- 5 M. Bedroom 3.90m x 3.60m
- 6 WIC 1.75m x 2.25m
- 7 M. Bath 1.65m x 2.90m
- 8 Balcony 1.44m



Studio Apartment - Type - 3

Unit Area	378.98 sq.ft
Balcony Area	59.20 sq.ft
Total Area	438.18 sq.ft

Keyplan Level 3 (Typ. Odd Levels upto L17)



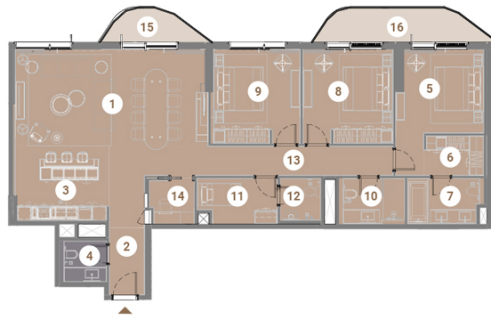
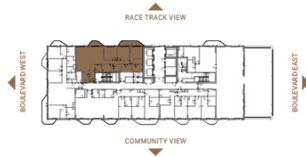
- 1 Bed Space 4.95m x 3.93m
- 2 Kitchenette 3.25m x 1.80m
- 3 Bath 2.90m x 1.98m
- 4 Balcony 1.45m



3 Bedroom Apartment - Type - 3

Unit Area	1,786.38 sq.ft
Balcony Area	169.85 sq.ft
Total Area	1,956.23 sq.ft

Keyplan Level 18



- 1 Living/Dining 4.10m x 8.25m
- 2 Entry 3.75m x 1.50m
- 3 Kitchen 2.62m x 4.05m
- 4 Powder Room 1.75m x 2.00m
- 5 M.Bedroom 3.55m x 3.75m
- 6 WIC 1.80m x 2.45m
- 7 M.Bath 1.95m x 3.25m
- 8 Bedroom 01 4.00m x 3.80m
- 9 Bedroom 02 4.00m x 3.83m
- 10 Common Bath 1.95m x 2.80m
- 11 Maid's Room 1.95m x 3.41m
- 12 Maid's Bath 1.95m x 1.75m
- 13 Hallway 1.25m x 7.83m
- 14 Study 1.85m x 1.93m
- 15 Balcony 1.45m
- 16 Balcony 1.45m



2 Bedroom Apartment - Type - 3

Unit Area	1,191.13 sq.ft
Balcony Area	167.00 sq.ft
Total Area	1,358.13 sq.ft

Keyplan Level 3 (Typ. Odd Levels upto L17)



- 1 Living/Dining 5.10m x 5.65m
- 2 Entry 2.70m x 1.60m
- 3 Kitchen 2.55m x 2.60m
- 4 Powder Room 1.85m x 1.83m
- 5 M.Bedroom 3.70m x 3.70m
- 6 WIC 2.45m x 1.95m
- 7 M.Bath 3.05m x 2.25m
- 8 Bedroom 01 4.10m x 3.70m
- 9 Bath 01 2.75m x 1.75m
- 10 Balcony 1.45m
- 11 Balcony 1.45m



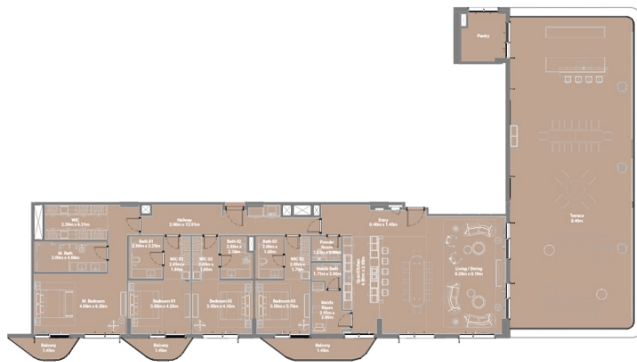
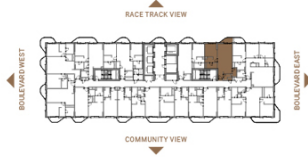
1 Bedroom Apartment - Type - 4

Unit Area	851.53 sq.ft
Balcony Area	59.20 sq.ft
Total Area	910.73 sq.ft



- 1 Living/Dining 6.20m x 4.30m
- 2 Entry 2.10m x 1.40m
- 3 Kitchen 2.70m x 2.70m
- 4 Laundry/Store 2.40m x 1.15m
- 5 Powder Room 1.70m x 2.05m
- 6 M.Bedroom 3.90m x 3.60m
- 7 WIC 1.75m x 2.35m
- 8 M.Bath 1.65m x 3.17m
- 9 Balcony 1.45m

Keyplan Level 3 (Typ. Odd Levels upto L17)



TYPE 4

Unit Area	2,953.18 sq.ft
Balcony Area	2,246.80 sq.ft
Total Area	5,199.98 sq.ft

Keyplan - Level 20

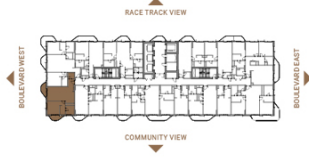


All images used are for illustrative purposes only and do not represent the actual size, features, specifications, fittings and furnishings. The Developer reserves the right to make revisions / alterations, at its absolute discretion, without any liability whatsoever.

1 Bedroom Apartment - Type - 5

Unit Area	860.90 sq.ft
Balcony Area	118.40 sq.ft
Total Area	979.30 sq.ft

Keyplan Level 3 (Typ. Odd Levels upto L17)



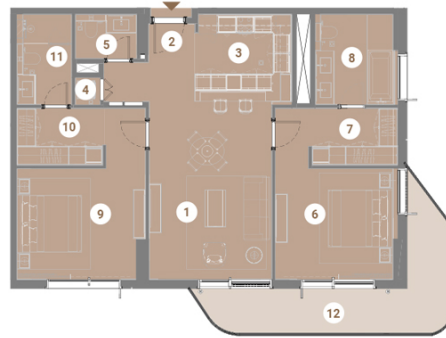
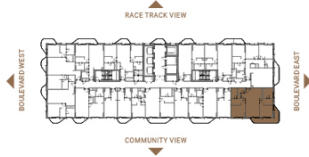
- 1 Living/Dining 4.10m x 5.65m
- 2 Entry 3.60m x 1.80m
- 3 Kitchen 3.50m x 2.50m
- 4 Powder Room 1.85m x 1.80m
- 5 M.Bedroom 4.00m x 3.70m
- 6 WIC 2.75m x 1.73m
- 7 M.Bath 2.65m x 2.50m
- 8 Balcony 1.45m
- 9 Balcony 1.45m



2 Bedroom Apartment - Type - 1A

Unit Area	1,195.53 sq.ft
Balcony Area	191.00 sq.ft
Total Area	1,386.53 sq.ft

Keyplan Level 3 (Typ. Odd Levels upto L17)

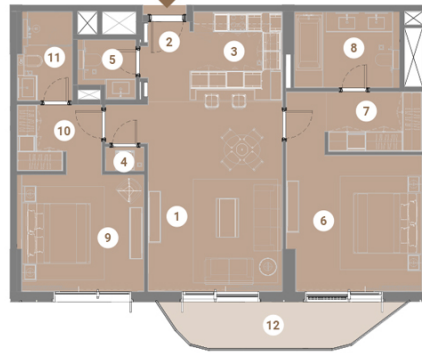


- 1 Living/Dining 5.65m x 4.00m
- 2 Entry 1.25m x 1.50m
- 3 Kitchen 2.95m x 3.15m
- 4 Laundry/Store 0.90m x 0.83m
- 5 Powder Room 1.50m x 2.03m
- 6 M.Bedroom 3.60m x 4.00m
- 7 WIC 1.85m x 2.90m
- 8 M.Bath 2.95m x 2.70m
- 9 Bedroom 01 3.60m x 4.20m
- 10 WIC 01 1.85m x 2.90m
- 11 Bath 01 2.95m x 1.80m
- 12 Balcony 1.45m



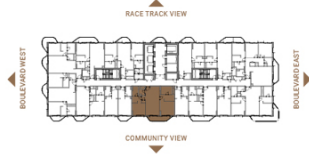
2 Bedroom Apartment - Type - 1B

Unit Area	1,181.12 sq.ft
Balcony Area	110.65 sq.ft
Total Area	1,291.77 sq.ft



- 1 Living/Dining 5.65m x 4.15m
- 2 Entry 0.75m x 1.30m
- 3 Kitchen 2.72m x 2.85m
- 4 Laundry/Store 0.75m x 1.20m
- 5 Powder Room 1.85m x 1.80m
- 6 M.Bedroom 4.20m x 4.20m
- 7 WIC 1.95m x 3.00m
- 8 M.Bath 2.35m x 3.25m
- 9 Bedroom 01 3.60m x 4.20m
- 10 WIC 01 2.05m x 1.53m
- 11 Bath 01 2.75m x 1.73m
- 12 Balcony 1.45m

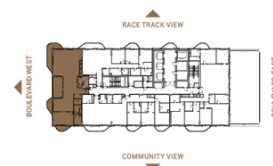
Keyplan Level 3 (Typ. Odd Levels upto L17)



TYPE 3A

Unit Area	3,782.31 sq.ft
Balcony Area	732.05 sq.ft
Total Area	4,040.13 sq.ft

Keyplan - Level 19



All images used are for illustrative purposes only and do not represent the actual size, features, specifications, fittings and furnishings. The Developer reserves the right to make revisions / alterations, at its sole discretion, without any liability whatsoever.