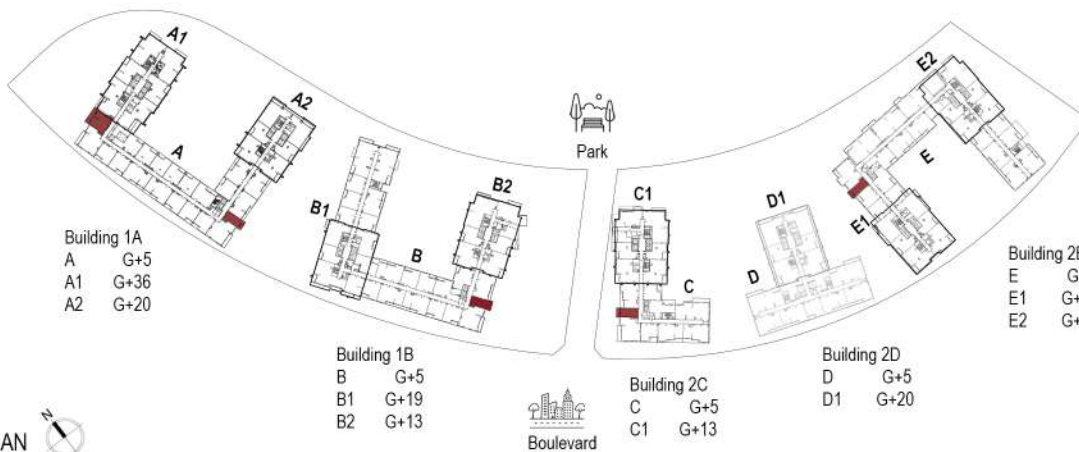


# UNIT LAYOUT - STUDIO TYPE S-P-A



Apartment Area	41.76 Sqm	449.50 Sqft
Balcony Area	7.86 Sqm	84.60 Sqft
<b>Total Area</b>	<b>49.62 Sqm</b>	<b>534.11 Sqft</b>

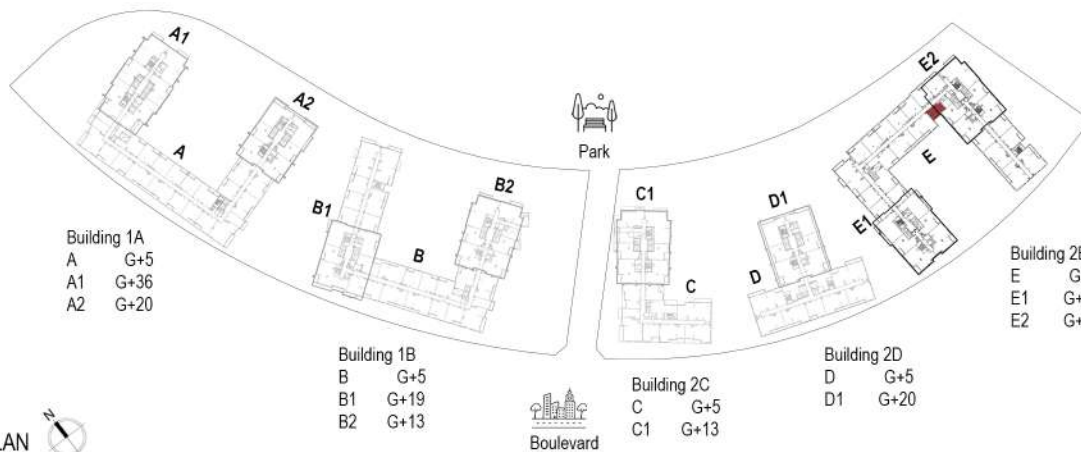
BUILDING	LEVEL
1A	1, 2, 3, 4, 5
1B	1, 2, 3, 4, 5
2C	1, 2, 3, 4, 5
2E	GF, 1

KEY PLAN 

All room dimensions are in metric and measured to structural elements and exclude wall finishes and construction tolerances. Calculation of suite area is measured as the area bounded by the centerline of demising or party walls separating one unit from another unit, the exterior surface of all exterior walls and the exterior surface of the corridor wall on enclosing and abutting the unit. Calculation of Terrace area is measured as the area bounded by the centerlines of demising or party walls separating one unit from another unit, the outermost face of the enclosing guard and the external face of the site abutting the balcony. All materials, dimensions & drawings features and amenities are approximate at the time of printing, Information subject to change without notice. Actual suite areas may vary from the stated area. Drawings are not to scale. The developer reserves the right to make revisions.

**wasl**

# UNIT LAYOUT - STUDIO TYPE S-P-B



Building 1A  
A G+5  
A1 G+36  
A2 G+20

Building 1B  
B G+5  
B1 G+19  
B2 G+13

Building 2C  
C G+5  
C1 G+13

Building 2D  
D G+5  
D1 G+20

Building 2E  
E G+5  
E1 G+20  
E2 G+16

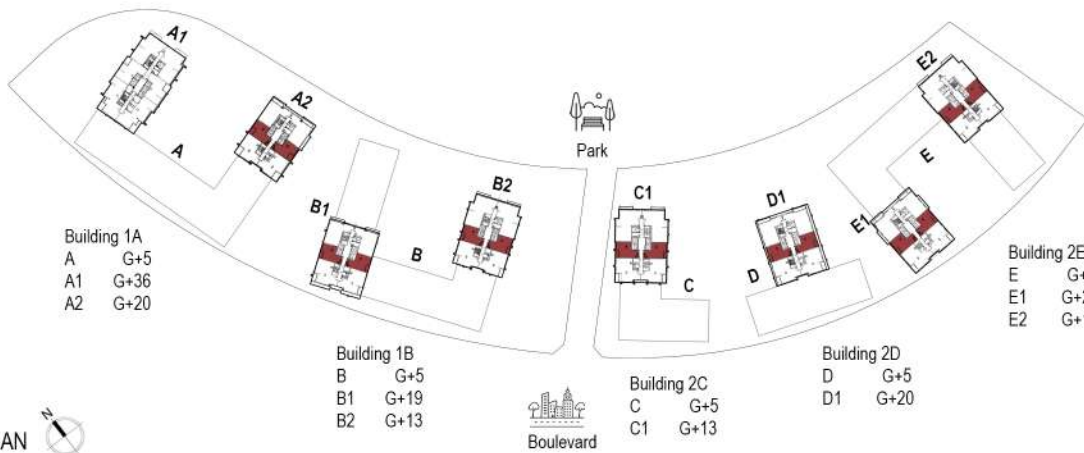
Apartment Area	48.51 Sqm	522.16 Sqft
Balcony Area	0.00 Sqm	0.00 Sqft
Total Area	48.51 Sqm	522.16 Sqft

BUILDING	LEVEL
2E	1 to 5

KEY PLAN 

All room dimensions are in metric and measured to structural elements and exclude wall finishes and construction tolerances. Calculation of suite area is measured as the area bounded by the centerline of demising or party walls separating one unit from another unit, the exterior surface of all exterior walls and the exterior surface of the corridor wall on enclosing and abutting the unit. Calculation of Terrace area is measured as the area bounded by the centerlines of demising or party walls separating one unit from another unit, the outermost face of the enclosing guard and the external face of the site abutting the balcony. All materials, dimensions & drawings features and amenities are approximate at the time of printing, Information subject to change without notice. Actual suite areas may vary from the stated area. Drawings are not to scale. The developer reserves the right to make revisions

# UNIT LAYOUT - 1BR TYPE 1-T-A



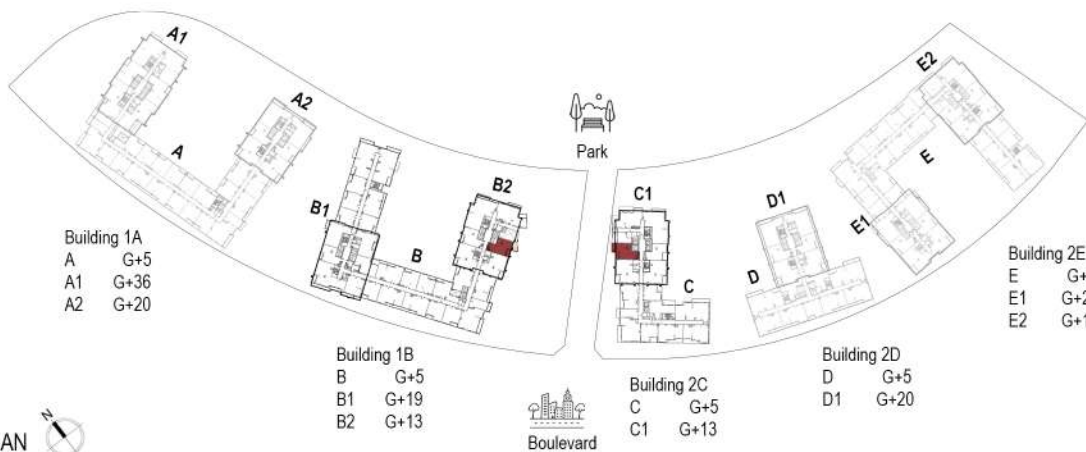
Apartment Area	71.78 Sqm	772.63 Sqft
Balcony Area	6.31 Sqm	67.92 Sqft
Total Area	78.09 Sqm	840.55 Sqft

BUILDING	LEVEL
1A	1 to 5, 7 to 20
1B	1 to 5, 7 to 19
2C	1 to 5, 7 to 13
2D	1 to 5, 7 to 20
2E	1 to 5, 7 to 20

KEY PLAN



# UNIT LAYOUT - 1BR TYPE 1-T-A2



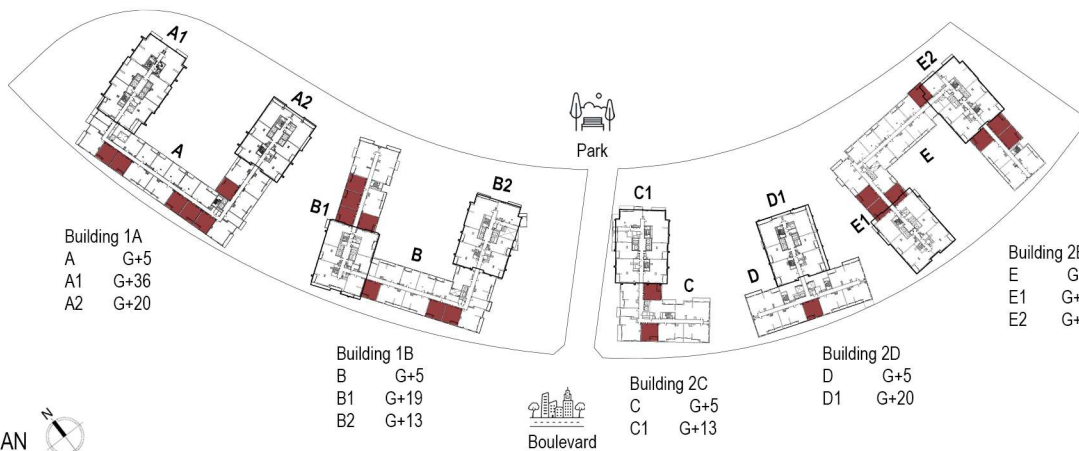
Apartment Area	80.93 Sqm	871.12 Sqft
Balcony Area	6.04 Sqm	65.01 Sqft
<b>Total Area</b>	<b>86.97 Sqm</b>	<b>936.14 Sqft</b>

BUILDING	LEVEL
1B	1 to 5
2C	1 to 5

KEY PLAN

All room dimensions are in metric and measured to structural elements and exclude wall finishes and construction tolerances. Calculation of suite area is measured as the area bounded by the centerline of demising or party walls separating one unit from another unit, the exterior surface of all exterior walls and the exterior surface of the corridor wall on enclosing and abutting the unit. Calculation of Terrace area is measured as the area bounded by the centerlines of demising or party walls separating one unit from another unit, the outermost face of the enclosing guard and the external face of the site abutting the balcony. All materials, dimensions & drawings features and amenities are approximate at the time of printing, Information subject to change without notice. Actual suite areas may vary from the stated area. Drawings are not to scale. The developer reserves the right to make revisions

# UNIT LAYOUT - 1BR TYPE 1-P-A1



Apartment Area	71.33 Sqm	767.79 Sqft
Balcony Area	7.23 Sqm	77.82 Sqft
Total Area	78.56 Sqm	845.61 Sqft

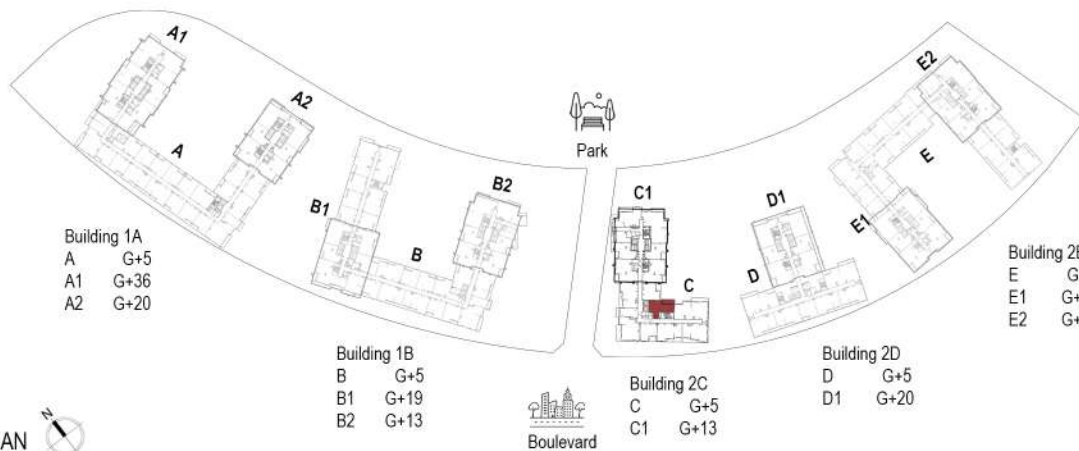
BUILDING	LEVEL
1A	1 to 5
1B	1 to 5
2C	1 to 5
2D	1 to 5
2E	1 to 5



All room dimensions are in metric and measured to structural elements and exclude wall finishes and construction tolerances. Calculation of suite area is measured as the area bounded by the centerline of demising or party walls separating one unit from another unit, the exterior surface of all exterior walls and the exterior surface of the corridor wall on enclosing and abutting the unit. Calculation of Terrace area is measured as the area bounded by the centerlines of demising or party walls separating one unit from another unit, the outermost face of the enclosing guard and the external face of the site abutting the balcony. All materials, dimensions & drawings features and amenities are approximate at the time of printing, Information subject to change without notice. Actual suite areas may vary from the stated area. Drawings are not to scale. The developer reserves the right to make revisions



# UNIT LAYOUT - 1BR TYPE 1-P-F



Apartment Area	82.19 Sqm	884.69 Sqft
Balcony Area	13.42 Sqm	144.45 Sqft
<b>Total Area</b>	<b>95.61 Sqm</b>	<b>1,029.14 Sqft</b>

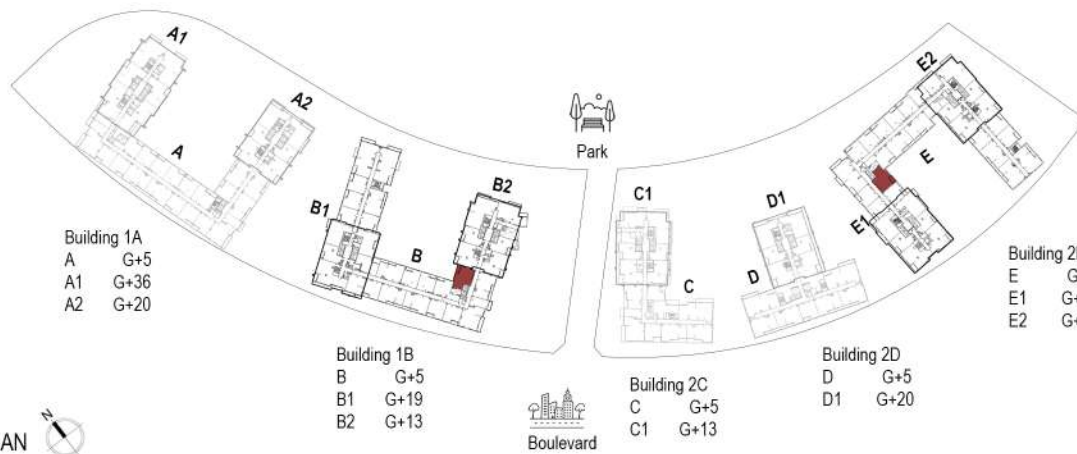
BUILDING	LEVEL
2C	1 to 5

KEY PLAN 

All room dimensions are in metric and measured to structural elements and exclude wall finishes and construction tolerances. Calculation of suite area is measured as the area bounded by the centerline of demising or party walls separating one unit from another unit, the exterior surface of all exterior walls and the exterior surface of the corridor wall on enclosing and abutting the unit. Calculation of Terrace area is measured as the area bounded by the centerlines of demising or party walls separating one unit from another unit, the outermost face of the enclosing guard and the external face of the site abutting the balcony. All materials, dimensions & drawings features and amenities are approximate at the time of printing, Information subject to change without notice. Actual suite areas may vary from the stated area. Drawings are not to scale. The developer reserves the right to make revisions

wasl

# UNIT LAYOUT - 1BR TYPE 1-P-G



Apartment Area	89.53 Sqm	963.69 Sqft
Balcony Area	6.90 Sqm	74.27 Sqft
Total Area	96.43 Sqm	1,037.96 Sqft

BUILDING	LEVEL
1B	1 to 5
2E	1 to 5

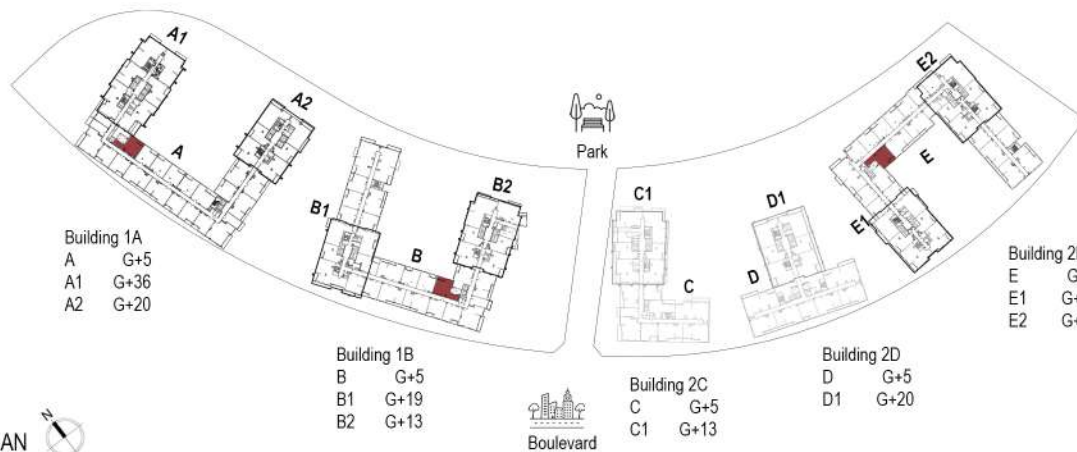
KEY PLAN



All room dimensions are in metric and measured to structural elements and exclude wall finishes and construction tolerances. Calculation of suite area is measured as the area bounded by the centerline of demising or party walls separating one unit from another unit, the exterior surface of all exterior walls and the exterior surface of the corridor wall on enclosing and abutting the unit. Calculation of Terrace area is measured as the area bounded by the centerlines of demising or party walls separating one unit from another unit, the outermost face of the enclosing guard and the external face of the site abutting the balcony. All materials, dimensions & drawings features and amenities are approximate at the time of printing, Information subject to change without notice. Actual suite areas may vary from the stated area. Drawings are not to scale. The developer reserves the right to make revisions



# UNIT LAYOUT - 1BR TYPE 1-P-H



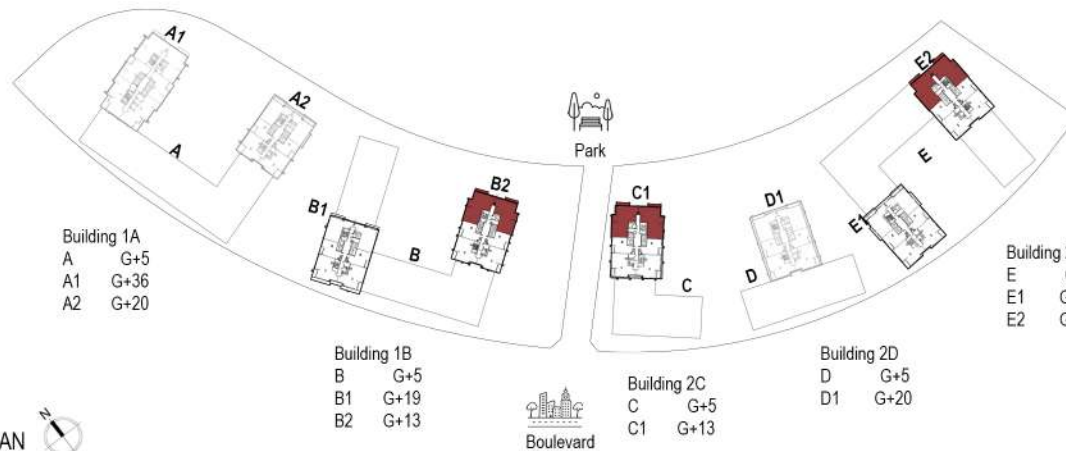
Apartment Area	87.02 Sqm	936.68 Sqft
Balcony Area	6.49 Sqm	69.68 Sqft
<b>Total Area</b>	<b>93.51 Sqm</b>	<b>1,006.53 Sqft</b>

BUILDING	LEVEL
1A	1 to 5
1B	1 to 5
2E	GF to 5

KEY PLAN

All room dimensions are in metric and measured to structural elements and exclude wall finishes and construction tolerances. Calculation of suite area is measured as the area bounded by the centerline of demising or party walls separating one unit from another unit, the exterior surface of all exterior walls and the exterior surface of the corridor wall on enclosing and abutting the unit. Calculation of Terrace area is measured as the area bounded by the centerlines of demising or party walls separating one unit from another unit, the outermost face of the enclosing guard and the external face of the site abutting the balcony. All materials, dimensions & drawings features and amenities are approximate at the time of printing, Information subject to change without notice. Actual suite areas may vary from the stated area. Drawings are not to scale. The developer reserves the right to make revisions

# UNIT LAYOUT - 3BR TYPE 3-T-C



Apartment Area	156.11 Sqm	1,680.35 Sqft
Balcony Area	10.95 Sqm	117.86 Sqft
<b>Total Area</b>	<b>167.06 Sqm</b>	<b>1,798.22 Sqft</b>

BUILDING	LEVEL
1B	2 to 5, 8 to 11
2C	2 to 5, 8 to 11
2E	2 to 5, 8 to 14

KEY PLAN



Building 1B  
B G+5  
B1 G+19  
B2 G+13



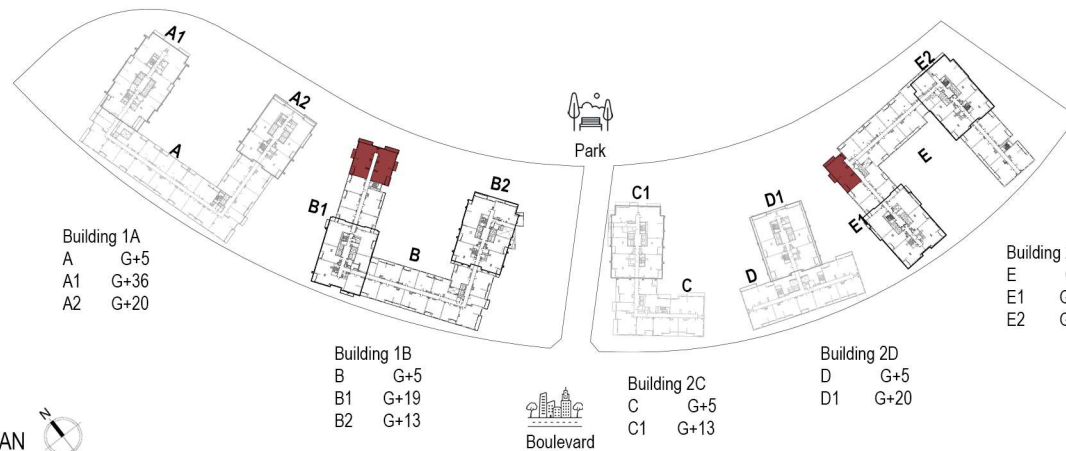
Building 2C  
C G+5  
C1 G+13

Building 2D  
D G+5  
D1 G+20

Building 2E  
E G+5  
E1 G+20  
E2 G+16

All room dimensions are in metric and measured to structural elements and exclude wall finishes and construction tolerances. Calculation of suite area is measured as the area bounded by the centerline of demising or party walls separating one unit from another unit, the exterior surface of all exterior walls and the exterior surface of the corridor wall on enclosing and abutting the unit. Calculation of Terrace area is measured as the area bounded by the centerlines of demising or party walls separating one unit from another unit, the outermost face of the enclosing guard and the external face of the site abutting the balcony. All materials, dimensions & drawings features and amenities are approximate at the time of printing, Information subject to change without notice. Actual suite areas may vary from the stated area. Drawings are not to scale. The developer reserves the right to make revisions

# UNIT LAYOUT - 3BR TYPE 3-P-A1



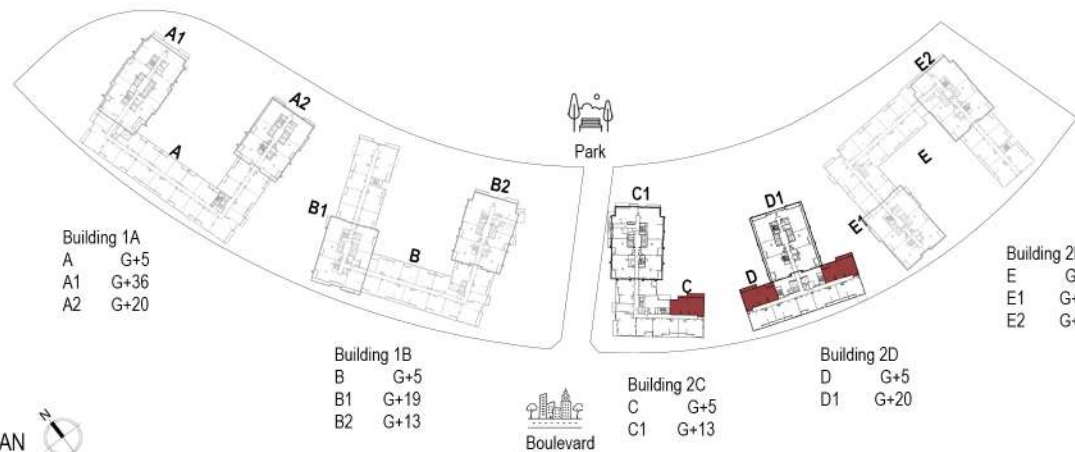
Apartment Area	150.92 Sqm	1,624.49 Sqft
Balcony Area	28.64 Sqm	308.28 Sqft
Total Area	179.56 Sqm	1,932.77 Sqft

BUILDING	LEVEL
1B	2 to 5
2E	2 to 5

KEY PLAN

All room dimensions are in metric and measured to structural elements and exclude wall finishes and construction tolerances. Calculation of suite area is measured as the area bounded by the centerline of demising or party walls separating one unit from another unit, the exterior surface of all exterior walls and the exterior surface of the corridor wall on enclosing and abutting the unit. Calculation of Terrace area is measured as the area bounded by the centerlines of demising or party walls separating one unit from another unit, the outermost face of the enclosing guard and the external face of the site abutting the balcony. All materials, dimensions & drawings features and amenities are approximate at the time of printing, Information subject to change without notice. Actual suite areas may vary from the stated area. Drawings are not to scale. The developer reserves the right to make revisions

# UNIT LAYOUT - 3BR TYPE 3-P-A2



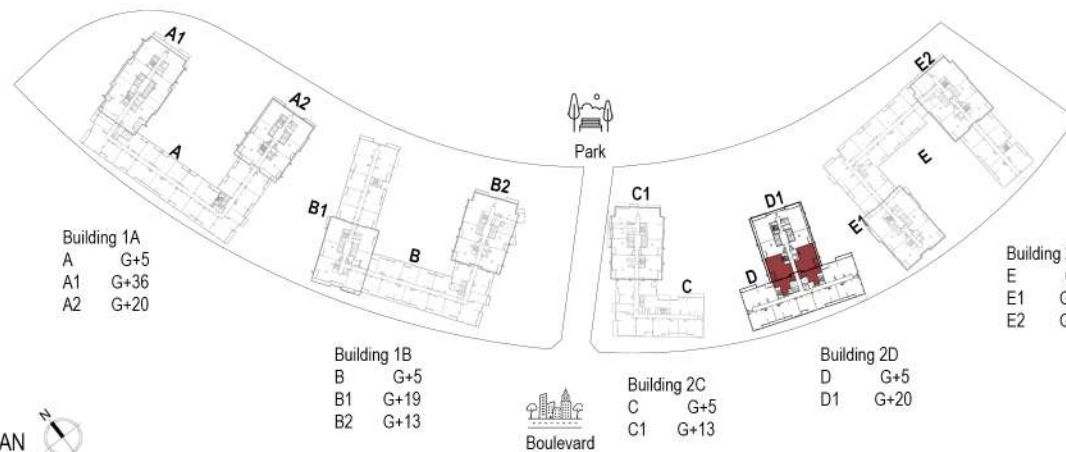
Apartment Area	151.07 Sqm	1,626.10 Sqft
Balcony Area	22.39 Sqm	241.00 Sqft
Total Area	173.46 Sqm	1,867.11 Sqft

BUILDING	LEVEL
2C	1 to 5
2D	1 to 5

KEY PLAN

All room dimensions are in metric and measured to structural elements and exclude wall finishes and construction tolerances. Calculation of suite area is measured as the area bounded by the centerline of demising or party walls separating one unit from another unit, the exterior surface of all exterior walls and the exterior surface of the corridor wall on enclosing and abutting the unit. Calculation of Terrace area is measured as the area bounded by the centerlines of demising or party walls separating one unit from another unit, the outermost face of the enclosing guard and the external face of the site abutting the balcony. All materials, dimensions & drawings features and amenities are approximate at the time of printing, Information subject to change without notice. Actual suite areas may vary from the stated area. Drawings are not to scale. The developer reserves the right to make revisions

# UNIT LAYOUT - 3BR TYPE 3-P-B



Apartment Area	172.69 Sqm	1,858.82 Sqft
Balcony Area	9.59 Sqm	103.23 Sqft
Total Area	182.28 Sqm	1,962.05 Sqft

BUILDING	LEVEL
2D	1 to 5

Building 1A  
A G+5  
A1 G+36  
A2 G+20

Building 1B  
B G+5  
B1 G+19  
B2 G+13

Building 2C  
C G+5  
C1 G+13

Building 2D  
D G+5  
D1 G+20

Building 2E  
E G+5  
E1 G+20  
E2 G+16

KEY PLAN



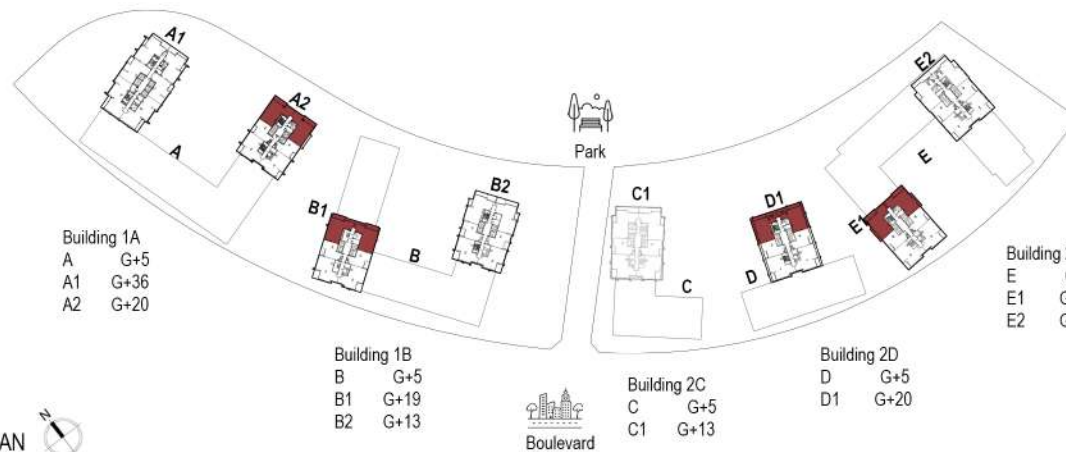
# UNIT LAYOUT - 3BR TYPE 3D-T-A



LOWER LEVEL



UPPER LEVEL



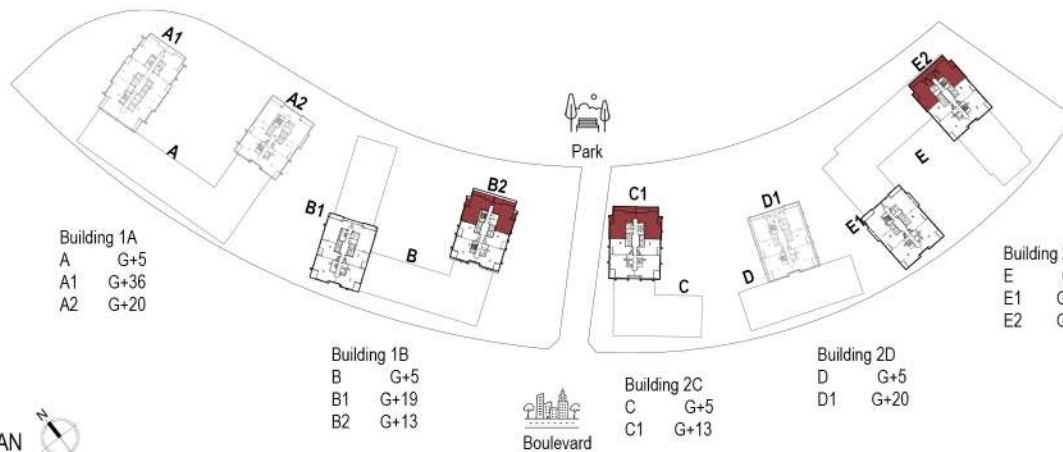
KEY PLAN

Apartment Area	247.69 Sqm	2,666.11 Sqft
Balcony Area	23.33 Sqm	251.12 Sqft
Total Area	271.02 Sqm	2,917.23 Sqft

BUILDING	LEVEL
1A	19
1B	18
2D	19
2E	19

All room dimensions are in metric and measured to structural elements and exclude wall finishes and construction tolerances. Calculation of suite area is measured as the area bounded by the centerline of demising or party walls separating one unit from another unit, the exterior surface of all exterior walls and the exterior surface of the corridor wall on enclosing and abutting the unit. Calculation of Terrace area is measured as the area bounded by the centerlines of demising or party walls separating one unit from another unit, the outermost face of the enclosing guard and the external face of the site abutting the balcony. All materials, dimensions & drawings features and amenities are approximate at the time of printing, Information subject to change without notice. Actual suite areas may vary from the stated area. Drawings are not to scale. The developer reserves the right to make revisions

# UNIT LAYOUT - 3BR TYPE 3P-T-B

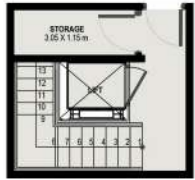


Apartment Area	250.32 Sqm	2,694.42 Sqft
Balcony Area	43.42 Sqm	467.37 Sqft
Total Area	293.74 Sqm	3,161.79 Sqft

BUILDING	LEVEL
1B	12
2C	12
2E	15

All room dimensions are in metric and measured to structural elements and exclude wall finishes and construction tolerances. Calculation of suite area is measured as the area bounded by the centerline of demising or party walls separating one unit from another unit, the exterior surface of all exterior walls and the exterior surface of the corridor wall on enclosing and abutting the unit. Calculation of Terrace area is measured as the area bounded by the centerlines of demising or party walls separating one unit from another unit, the outermost face of the enclosing guard and the external face of the site abutting the balcony. All materials, dimensions & drawings features and amenities are approximate at the time of printing, Information subject to change without notice. Actual suite areas may vary from the stated area. Drawings are not to scale. The developer reserves the right to make revisions

# UNIT LAYOUT - 3BR TYPE 3T-P-A



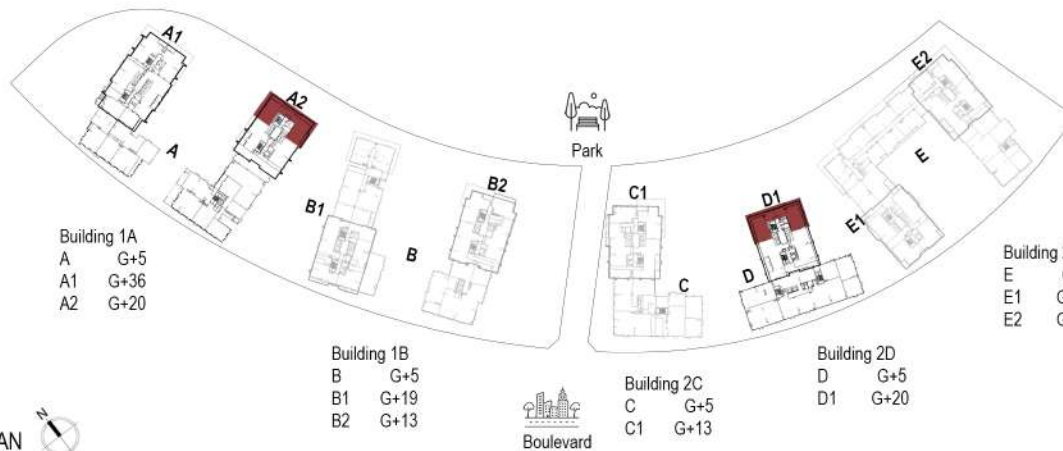
BASEMENT LOBBY



LOWER LEVEL



UPPER LEVEL



Building 1A  
A G+5  
A1 G+36  
A2 G+20

Building 1B  
B G+5  
B1 G+19  
B2 G+13

Building 2C  
C G+5  
C1 G+13

Building 2D  
D G+5  
D1 G+20

Building 2E  
E G+5  
E1 G+20  
E2 G+16

KEY PLAN

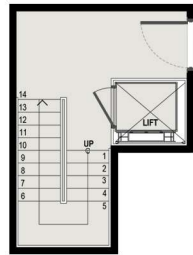


Apartment Area	247.14 Sqm	2,660.19 Sqft
Balcony Area	71.2 Sqm	766.39 Sqft
Total Area	318.34 Sqm	3,426.58 Sqft

BUILDING	LEVEL
1A	GF
2D	GF

All room dimensions are in metric and measured to structural elements and exclude wall finishes and construction tolerances. Calculation of suite area is measured as the area bounded by the centerline of demising or party walls separating one unit from another unit, the exterior surface of all exterior walls and the exterior surface of the corridor wall on enclosing and abutting the unit. Calculation of Terrace area is measured as the area bounded by the centerlines of demising or party walls separating one unit from another unit, the outermost face of the enclosing guard and the external face of the site abutting the balcony. All materials, dimensions & drawings features and amenities are approximate at the time of printing, Information subject to change without notice. Actual suite areas may vary from the stated area. Drawings are not to scale. The developer reserves the right to make revisions

# UNIT LAYOUT - 3BR TYPE 3T-P-B



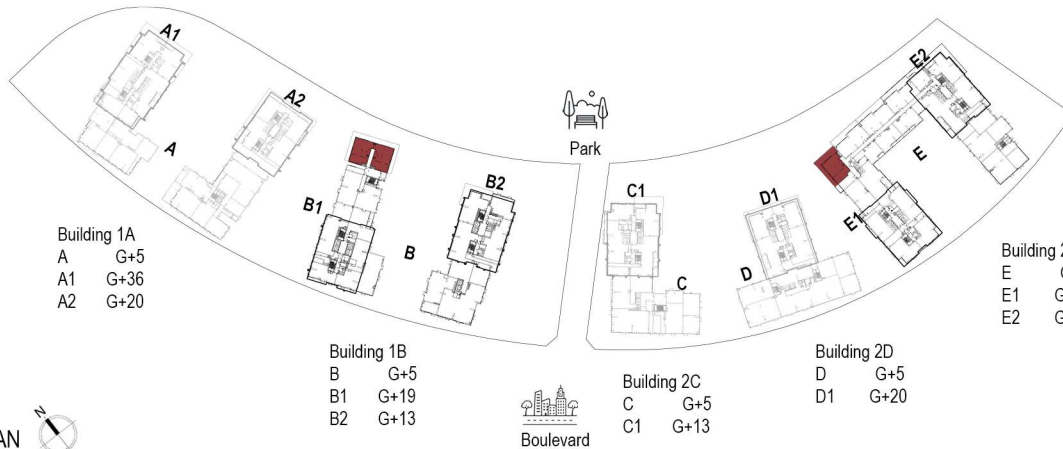
BASEMENT LOBBY



LOWER LEVEL



UPPER LEVEL



Building 1A  
A G+5  
A1 G+36  
A2 G+20

Building 1B  
B G+5  
B1 G+19  
B2 G+13

Building 2C  
C G+5  
C1 G+13

Building 2D  
D G+5  
D1 G+20

Building 2E  
E G+5  
E1 G+20  
E2 G+16

KEY PLAN

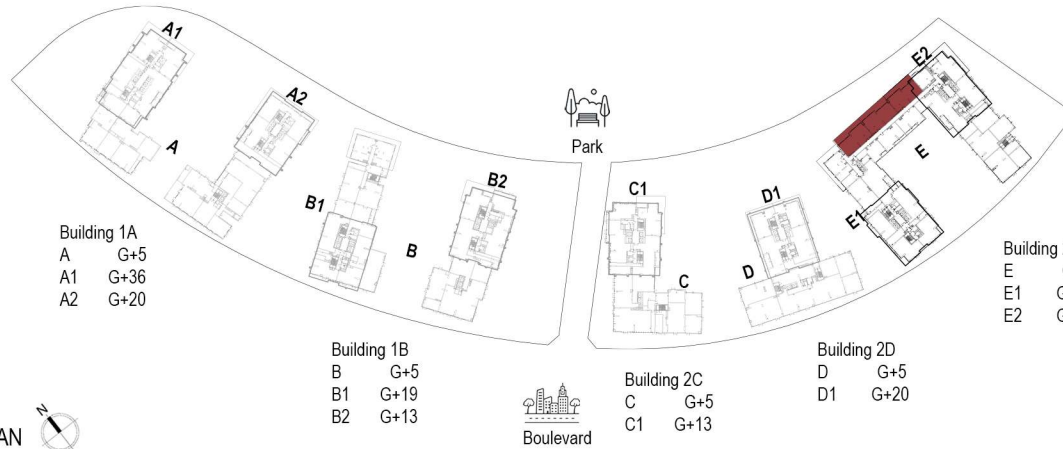
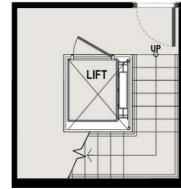


Apartment Area	238.63 Sqm	2,568.59 Sqft
Balcony Area	65.32 Sqm	703.10 Sqft
Total Area	303.95 Sqm	3,271.69 Sqft

BUILDING	LEVEL
1B	GF
2E	GF

All room dimensions are in metric and measured to structural elements and exclude wall finishes and construction tolerances. Calculation of suite area is measured as the area bounded by the centerline of demising or party walls separating one unit from another unit, the exterior surface of all exterior walls and the exterior surface of the corridor wall on enclosing and abutting the unit. Calculation of Terrace area is measured as the area bounded by the centerlines of demising or party walls separating one unit from another unit, the outermost face of the enclosing guard and the external face of the site abutting the balcony. All materials, dimensions & drawings features and amenities are approximate at the time of printing, Information subject to change without notice. Actual suite areas may vary from the stated area. Drawings are not to scale. The developer reserves the right to make revisions

# UNIT LAYOUT - 4BR TYPE 4T-P-B



Apartment Area	304.19 Sqm	3274.27 Sqft
Balcony Area	66.42 Sqm	714.94 Sqft
Total Area	370.61 Sqm	3,989.21 Sqft

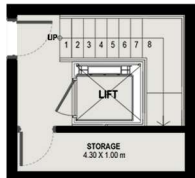
BUILDING	LEVEL
2E	GF

All room dimensions are in metric and measured to structural elements and exclude wall finishes and construction tolerances. Calculation of suite area is measured as the area bounded by the centerline of demising or party walls separating one unit from another unit, the exterior surface of all exterior walls and the exterior surface of the corridor wall on enclosing and abutting the unit. Calculation of Terrace area is measured as the area bounded by the centerlines of demising or party walls separating one unit from another unit, the outermost face of the enclosing guard and the external face of the site abutting the balcony. All materials, dimensions & drawings features and amenities are approximate at the time of printing, Information subject to change without notice. Actual suite areas may vary from the stated area. Drawings are not to scale. The developer reserves the right to make revisions

# UNIT LAYOUT 4BR TYPE 4T-P-C



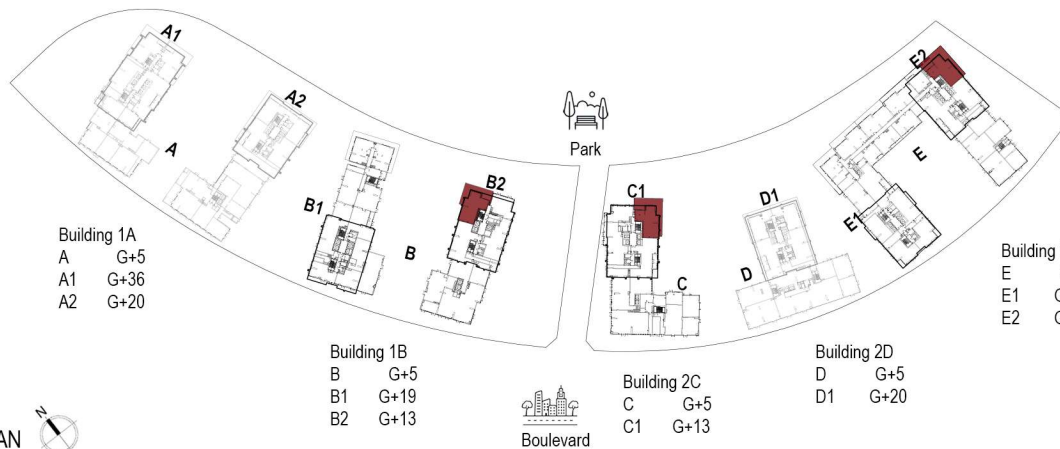
LOWER LEVEL



BASEMENT LOBBY



UPPER LEVEL



Building 1A  
A G+5  
A1 G+36  
A2 G+20

Building 1B  
B G+5  
B1 G+19  
B2 G+13

Building 2C  
C G+5  
C1 G+13

Building 2D  
D G+5  
D1 G+20

Building 2E  
E G+5  
E1 G+20  
E2 G+16

Apartment Area	303.53 Sqm	3,267.17 Sqft
Balcony Area	113.13 Sqm	1,217.72 Sqft
Total Area	416.66 Sqm	4,484.89 Sqft

BUILDING	LEVEL
1B	GF
2C	GF
2E	GF

KEY PLAN



All room dimensions are in metric and measured to structural elements and exclude wall finishes and construction tolerances. Calculation of suite area is measured as the area bounded by the centerline of demising or party walls separating one unit from another unit, the exterior surface of all exterior walls and the exterior surface of the corridor wall on enclosing and abutting the unit. Calculation of Terrace area is measured as the area bounded by the centerlines of demising or party walls separating one unit from another unit, the outermost face of the enclosing guard and the external face of the site abutting the balcony. All materials, dimensions & drawings features and amenities are approximate at the time of printing, Information subject to change without notice. Actual suite areas may vary from the stated area. Drawings are not to scale. The developer reserves the right to make revisions